

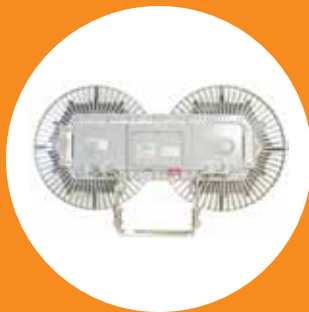
• Dialight
.....



DuroSite® LED End-to-End Linear Fixture - NSF
for Indoor and Outdoor Industrial Applications

On when it matters most.

Products and solutions that protect your business





Features & Benefits

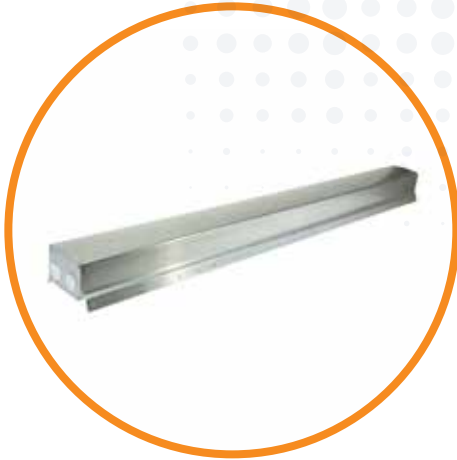
- 5 year full performance warranty
- L70 rated for >100,000 hours @ 25°C
- Instant on/off operation
- Resistant to dust & vibration
- Excellent corrosion resistance to water & salt
- Universal input (120 - 277V AC, 50/60Hz)
- Temperature compensation technology for longer life
- Integrated wiring box on each end for easy install
- Low profile housing for limited space applications
- Conforms to NSF/ANSI Standard 2 - Food Equipment

Application

Dialight's DuroSite LED linear fixture replaces HID and fluorescent lighting fixtures in industrial applications. The DuroSite® LED Linear fixture's rugged solid state design makes it highly resistant to shock and vibration. Its fully gasketed IP66/67 rated enclosure makes it suitable for dusty & wet locations, its 1598/A rating guarantees added protection from salt water spray. The DuroSite LED Linear's superior design allows for wiring and mounting versatility and ease of installation for many lighting applications.

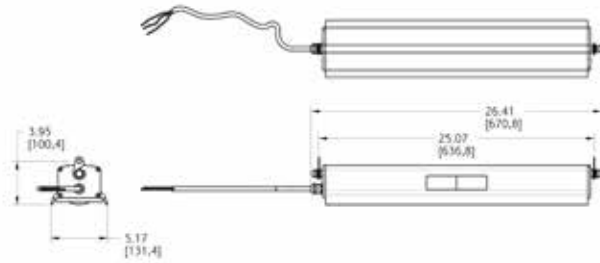
DuroSite® LED End-to-End Linear Fixture - NSF

NSF Model



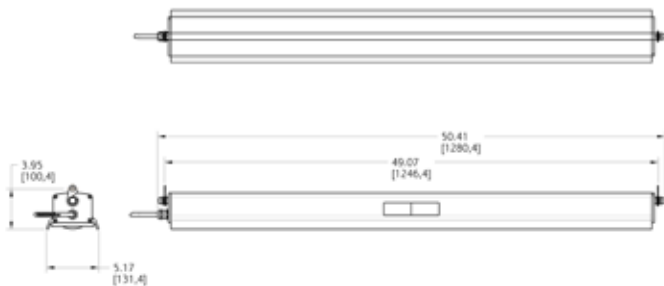
Type II Anodized model shown above (coming soon)

2' End - to - End Linear Dimensional



Dimensions in inches [mm]

4' End - to - End Linear Dimensional



Dimensions in inches [mm]

Certifications & Ratings

- UL 1598/A
- CSA 22.2 No. 250
- NSF certified for Splash and Non-Food Zones
- IP66/67
- NEMA 4X

Mechanical Information:

- Fixture weight:** 4' - 18 lbs (8.16 kg)
2' - 13 lbs (5.90 kg)
- Shipping weight:** 4' - 20 lbs (9.07 kg)
2' - 15 lbs (6.80 kg)
- Mounting:** End cap with chain mount
- Cable:** 6ft Yellow SECOOW cord,
3-conductor 18AWG & cable gland

Electrical Specifications:

- Operating voltage:** 120 - 277V AC
- Power consumption:** See table
- Operating temp:** -40°F to +149°F (-40°C to +65°C)
- Harmonics:** 61000-3-2
- Transient protection:** FCC Title 47, Subpart B, Section 15, Class A device. RF Immunity; 10V/m, 80MHz-1GHz
- Surge protection:** EN 61000-4-5
6kV line to line
6kV line to ground
- THD:** < 20%
- Power factor:** > 0.9

Construction:

- Housing:** Extruded 6063 aluminum
- Finish:** Superior dual coat finish
- Sealed white polyester topcoat
- Chemical-resistant epoxy primer
- Lens:** Polycarbonate

Photometric Information:

- CRI:** 80
- CCT:** 5000K (cool white)
4000K (neutral white)
- IES files:** Available at www.dialight.com

All values typical unless otherwise stated (tolerance +/- 10%)

* For information on chemical compatibility, please follow this link to reference Dialight's Chemical Compatibility Guide. www.dialight.com/pubs/MDTFCHEMRFLX001.PDF

DuroSite® LED End-to-End Linear Fixture - NSF

Ordering Information - NSF Models

Part Number¹	Length	CRI	Voltage	Lens	CCT	Fixture Lumens	Watt	LPW	Optical Pattern
White Powder Coated Models									
LBN2MB3FNFFWN	4'	80	120 - 277V AC	Clear	5000K (cool white)	7,500	60	125	Circular
LBN6MB3FNFFWN	4'	80	120 - 277V AC	Diffused	5000K (cool white)	6,750	60	112	Circular
LAN2MB3BNFFWN	2'	80	120 - 277V AC	Clear	5000K (cool white)	4,000	32	125	Circular
LAN6MB3BNFFWN	2'	80	120 - 277V AC	Diffused	5000K (cool white)	3,500	32	109	Circular

All lumen values are typical (tolerance +/- 10%)

Part numbers listed in the above table are cool white. For neutral white models replace the 6th character with N. Ex. LBN2MB3FNFFWN becomes LBN2MN3FNFFWN

Light Distribution Pattern

