

DuroSite® LED Linear - Battery Backup

Technology Specifications



Ratings and Certifications

- 5 year warranty
- L70 rated for >125,000 hours
- CSA C22.2 No. 250
- UL 1598/A
- UL 924
- IP66
- NEMA 4X

*All features not available on every model. Please refer to product part number pages for model specifics.

Mechanical Information

Fixture weight:	18 lb (8.2 kg)
Shipping weight:	21 lb (9.5 kg)
Mounting:	(1) Threaded 3/4" NPT Side
	(2) Threaded 3/4" NPT Ends

Specifications

Voltage:	120-277 VAC	Housing:	Copper-free aluminum
Operating temp:	-4°F to +149°F (-20°C to +65°C)	Lens:	Polycarbonate
Power factor:	>0.9	CRI:	75
THD:	<20%	CCT:	5000K (cool white)
Surge protection:	1kV line-to-line, 2kV line-to-ground		4000K (neutral white)
Battery:	3.6V 10Ah Nimh	Battery Duration:	@ 25°C ambient - est. >3 hours

Comparison

	Warranty	L70
Dialight LED Linear	5yr	>125,000
Metal Halide	1	6,000
High Pressure Sodium	1	20,000
Fluorescent	1	24,000

Lumens

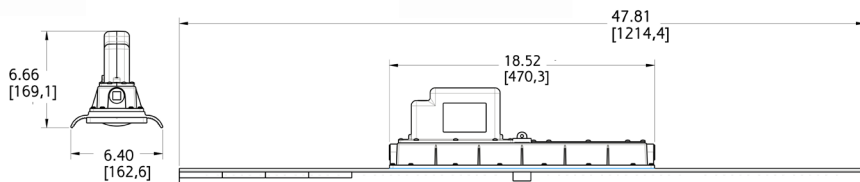
Wattage

lm/W

Mounting Heights

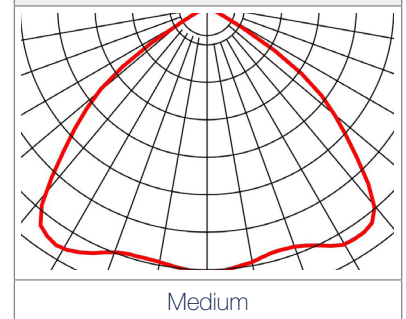
7,000	85	82	20' and under
-------	----	----	---------------

Dimensions



Dimension in inches [mm]

Beam Distribution



This fixture is offered in sustained and maintained configurations.

Sustained has a single AC input and battery backup mode is entered upon any loss of power. Fixture cannot be turned off without entering battery backup mode.

Maintained has two AC inputs. The fixture can be turned on and off via AC-1 and Fixture only enters battery backup mode when AC-2 is lost or low.

When ordering please refer our website www.dialight.com to view the current versions of all relevant product documentation, including the most up to date product data sheets. For the avoidance of doubt, in the event of any discrepancy between the contents of this document and information provided on our website, the information provided on our website shall prevail.

DuroSite® LED Linear - Battery Backup

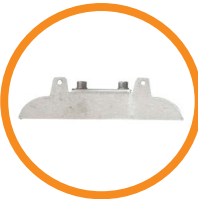
Ordering Information & Accessories

Part Number	Length	Type	CRI	Fixture Lumens	Watt	lm/W	Voltage	CCT	Lens	Beam Distribution
LSM3C4MEP	4'	Sustained	75	7,000	85	82	120-277 VAC	5000K (cool white)	Polycarbonate	Medium
LSM3C4MNP	4'	Maintained	75	7,000	85	82	120-277 VAC	5000K (cool white)	Polycarbonate	Medium

All values typical unless otherwise stated (tolerance +/- 10%).



- LSXW4**
- Aluminum mounting bracket
 - Can be angled at 0°, 30°, 45°, 60° & 90°



- LSXENDCAPKIT**
- 304 stainless steel chain mounting brackets



- HZXSAFEKIT**
- Stainless steel safety cable kit

When ordering please refer our website www.dialight.com to view the current versions of all relevant product documentation, including the most up to date product data sheets. For the avoidance of doubt, in the event of any discrepancy between the contents of this document and information provided on our website, the information provided on our website shall prevail.