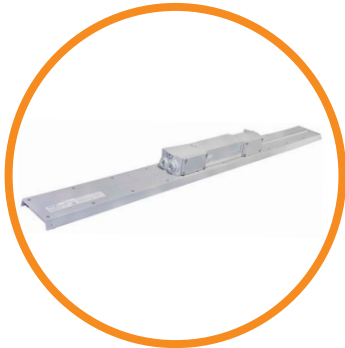


SafeSite® LED Linear - Low Profile

Technical Specifications



Ratings and Certifications

- UL 1598/A
- UL 844
- IP66/67
- NEMA 4X
- 5 year warranty
- L70 rated for >100,000 hours
- CSA C22.2 No. 137-M81
- CID2 A,B,C,D
- CID1 E,F,G
- CID2 F,G
- CIII

*All features not available on every model. Please refer to product part number pages for model specifics.

Mechanical Information

Fixture weight:	
4' model:	10 lb (4.5 kg)
2' model:	7 lb (3.2 kg)
Shipping weight:	
4' model:	11 lb (5.0 kg)
2' model:	8 lb (3.6 kg)
Mounting:	
	(4) 3/4" NPT openings
	Optional swivel bracket - LPXW4
	Optional low profile bracket - LPXW4LP

Temperature Ratings

Ambient Temperature Range T4A Temperature Code	Ambient Temperature Range T5 Temperature Code
-40°F to +149°F (-40°C to +65°C)	-40°F to +113°F (-40°C to +45°C)

Specifications

Voltage:	100-277 VAC	Housing:	Copper-free aluminum
Operating temp:	-40°F to +149°F (-40°C to +65°C)	Lens:	Polycarbonate
Power factor:	>0.9	CRI:	75 / 80
THD:	<20%	CCT:	5000K (cool white)
Surge protection:	4kV line-to-line, 4kV line-to-ground		4000K (neutral white)

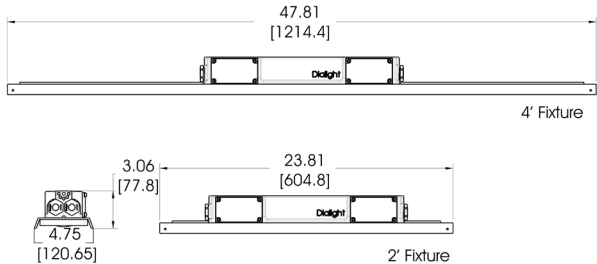
Comparison

	Warranty	L70	T-Rating
Dialight LED Linear	5yr	>100,000	T5
Metal Halide	1	6,000	T2
High Pressure Sodium	1	20,000	T2A
Fluorescent	1	24,000	T3

Lumens Wattage lm/W Mounting Heights

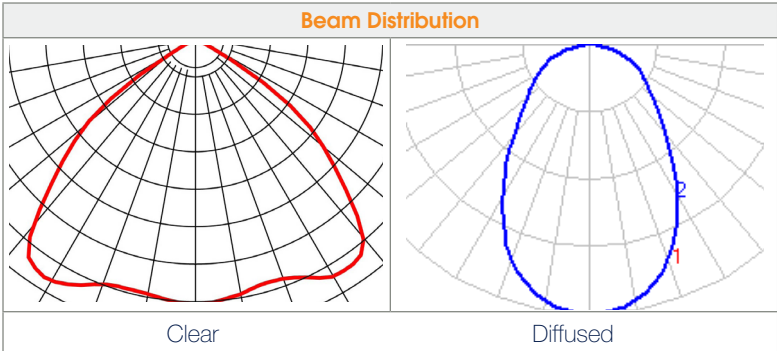
Lumens	Wattage	lm/W	Mounting Heights
7,250	66	110	20'
6,700	66	102	↕
3,600	33	109	
3,300	33	100	10'

Dimensions



Dimension in inches [mm]

Beam Distribution



When ordering please refer our website www.dialight.com to view the current versions of all relevant product documentation, including the most up to date product data sheets. For the avoidance of doubt, in the event of any discrepancy between the contents of this document and information provided on our website, the information provided on our website shall prevail.

SafeSite® LED Linear - Low Profile

Ordering Information & Accessories

Part Number	Length	CRI	CID1	CID2	CIID1	CIID2	CIII	Voltage	Lens	CCT	Fixture Lumens	Watt	lm/W	Beam Distribution
Class I, Div. 2 Models														
LPD3C4M2P	4'	75		•				100-277 VAC	Clear	5000K (cool white)	7,250	66	110	Medium
LPD3C4H2W	4'	75		•				100-277 VAC	Diffused	5000K (cool white)	6,700	66	102	Medium
LPD3B4M2P	4'	80		•				100-277 VAC	Clear	5000K (cool white)	6,500	66	98	Medium
LPD3B4H2W	4'	80		•				100-277 VAC	Diffused	5000K (cool white)	6,000	66	91	Medium
LPD3C4D2P	2'	75		•				100-277 VAC	Clear	5000K (cool white)	3,600	33	109	Medium
LPD3C4B2W	2'	75		•				100-277 VAC	Diffused	5000K (cool white)	3,300	33	100	Medium
LPD3B4D2P	2'	80		•				100-277 VAC	Clear	5000K (cool white)	3,200	33	97	Medium
LPD3B4B2W	2'	80		•				100-277 VAC	Diffused	5000K (cool white)	2,900	33	88	Medium
Class II Models														
LPF3C4M2P	4'	75			•	•	•	100-277 VAC	Clear	5000K (cool white)	7,000	66	106	Medium
LPF3C4H2W	4'	75			•	•	•	100-277 VAC	Diffused	5000K (cool white)	6,500	66	98	Medium
LPF3B4M2P	4'	80			•	•	•	100-277 VAC	Clear	5000K (cool white)	6,300	66	95	Medium
LPF3B4H2W	4'	80			•	•	•	100-277 VAC	Diffused	5000K (cool white)	6,000	66	91	Medium
LPF3C4D2P	2'	75			•	•	•	100-277 VAC	Clear	5000K (cool white)	3,500	33	106	Medium
LPF3C4B2W	2'	75			•	•	•	100-277 VAC	Diffused	5000K (cool white)	3,200	33	97	Medium
LPF3B4D2P	2'	80			•	•	•	100-277 VAC	Clear	5000K (cool white)	3,000	33	91	Medium
LPF3B4B2W	2'	80			•	•	•	100-277 VAC	Diffused	5000K (cool white)	2,700	33	82	Medium

All values typical unless otherwise stated (tolerance +/- 10%).

Part numbers listed in the table above are cool white. For neutral white models, replace the 5th character with an **N**.



LPXW4

- 316 Stainless steel mounting bracket
- Can be angled at 0°, 30°, 45°, 60° & 90°



LPXW4LP

- 316 Stainless steel low profile mounting bracket
- Can be angled at 0° and 15°



LTXSAFEKIT

- Stainless steel safety cable kit for secondary retention



LTXENDCAPKIT

- 304 Stainless steel chain mount and secondary retention bracket

SafeSite® LED Linear - Top Conduit

Technical Specifications



Ratings and Certifications

• UL 844	• CID2 A,B,C,D
• UL 1598/A	• CID1 E,F,G
• CSA C22.2 No. 137-M81	• CID2 F,G
• IP66	• CIII
• NEMA 4X	• 5 year warranty
• L70 rated for >100,000 hours	

*All features not available on every model. Please refer to product part number pages for model specifics.

Mechanical Information

Fixture weight:	
4' model:	10 lb (4.5 kg)
2' model:	7 lb (3.2 kg)
Shipping weight:	
4' model:	11 lb (5.0 kg)
2' model:	8 lb (3.6 kg)
Mounting:	
	(3) 3/4" NPT openings
	Optional swivel bracket - LTXW4
	Optional low profile bracket - LTXW4LP

Temperature Ratings

Ambient Temperature Range T4A Temperature Code	Ambient Temperature Range T5 Temperature Code
-40°F to +149°F (-40°C to +65°C)	-40°F to +113°F (-40°C to +45°C)

Specifications

Voltage:	100-277 VAC	Housing:	Copper-free aluminum
Operating temp:	-40°F to +149°F (-40°C to +65°C)	Lens:	Polycarbonate
Power factor:	>0.9	CRI:	75/80
THD:	<20%	CCT:	5000K (cool white)
Surge protection:	4kV line-to-line, 4kV line-to-ground		4000K (neutral white)

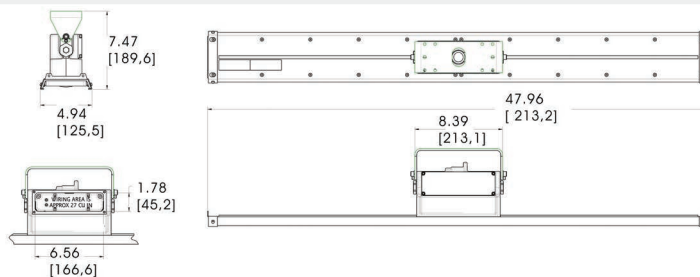
Comparison

	Warranty	L70	T-Rating
Dialight LED Linear	5yr	>100,000	T5
Metal Halide	1	6,000	T2
High Pressure Sodium	1	20,000	T2A
Fluorescent	1	24,000	T3

Lumens Wattage lm/W Mounting Heights

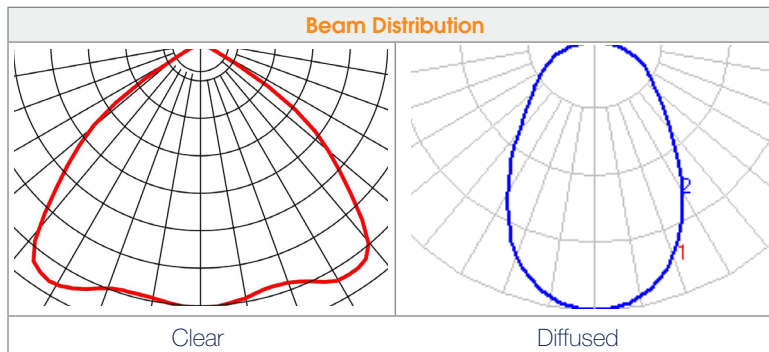
Lumens	Wattage	lm/W	Mounting Heights
7,250	66	110	20'
6,900	66	105	↕
3,600	33	109	
3,300	33	100	
			10'

Dimensions



Dimension in inches [mm]

Beam Distribution



When ordering please refer our website www.dialight.com to view the current versions of all relevant product documentation, including the most up to date product data sheets. For the avoidance of doubt, in the event of any discrepancy between the contents of this document and information provided on our website, the information provided on our website shall prevail.

SafeSite® LED Linear - Top Conduit

Ordering Information & Accessories

Classifications: CID2 Groups A, B, C, D • CIID1 E, F, G • CIID2 F, G • CIII

Part Number	Length	CRI	CID1	CID2	CIID1	CIID2	CIII	Voltage	Lens	CCT	Fixture Lumens	Watt	lm/W	Beam Distribution
Class I, Div. 2 Models														
LTD3C4M2P	4'	75		•				100-277 VAC	Clear	5000K (cool white)	7,250	66	110	Medium
LTD3C4H2W	4'	75		•				100-277 VAC	Diffused	5000K (cool white)	6,700	66	102	Medium
LTD3B4M2P	4'	80		•				100-277 VAC	Clear	5000K (cool white)	6,500	66	98	Medium
LTD3B4H2W	4'	80		•				100-277 VAC	Diffused	5000K (cool white)	6,000	66	91	Medium
LTD3C4D2P	2'	75		•				100-277 VAC	Clear	5000K (cool white)	3,600	33	109	Medium
LTD3C4B2W	2'	75		•				100-277 VAC	Diffused	5000K (cool white)	3,300	33	100	Medium
LTD3B4D2P	2'	80		•				100-277 VAC	Clear	5000K (cool white)	3,200	33	97	Medium
LTD3B4B2W	2'	80		•				100-277 VAC	Diffused	5000K (cool white)	2,900	33	88	Medium
Class II Models														
LTF3C4M2P	4'	75			•	•	•	100-277 VAC	Clear	5000K (cool white)	7,000	66	106	Medium
LTF3C4H2W	4'	75			•	•	•	100-277 VAC	Diffused	5000K (cool white)	6,500	66	98	Medium
LTF3B4M2P	4'	80			•	•	•	100-277 VAC	Clear	5000K (cool white)	6,300	66	95	Medium
LTF3B4H2W	4'	80			•	•	•	100-277 VAC	Diffused	5000K (cool white)	6,000	66	91	Medium
LTF3C4D2P	2'	75			•	•	•	100-277 VAC	Clear	5000K (cool white)	3,500	33	106	Medium
LTF3C4B2W	2'	75			•	•	•	100-277 VAC	Diffused	5000K (cool white)	3,200	33	97	Medium
LTF3B4D2P	2'	80			•	•	•	100-277 VAC	Clear	5000K (cool white)	3,000	33	91	Medium
LTF3B4B2W	2'	80			•	•	•	100-277 VAC	Diffused	5000K (cool white)	2,700	33	82	Medium

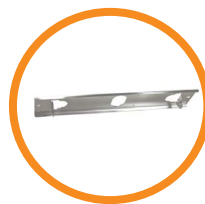
All values typical unless otherwise stated (tolerance +/- 10%).

Part numbers listed in the table above are cool white. For neutral white models, replace the 5th character with an **N**.



LTXW4

- Mounting bracket
- Can be angled at 0°, 30°, 45°, 60° & 90°



LTXW4LP

- Mounting bracket
- Can be angled at 0° and 15°



LTXSAFEKIT

- Stainless steel safety cable kit for secondary retention



LTXENDCAPKIT

- 304 Stainless steel chain mount and secondary retention bracket

When ordering please refer our website www.dialight.com to view the current versions of all relevant product documentation, including the most up to date product data sheets. For the avoidance of doubt, in the event of any discrepancy between the contents of this document and information provided on our website, the information provided on our website shall prevail.