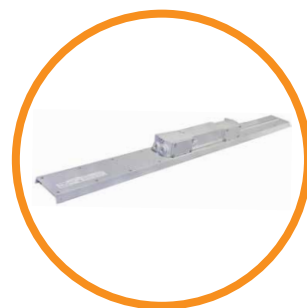




Dialight SafeSite® LED Linear - LT/LP

Stock Part Numbers - APAC Region



Australia & Asia Orders Codes - CE/UL

| Current Part Number | Historic Part Number | Fixture Lumens | Wattage | lm/W | Voltage | Colour Temperature (CCT) | Lens | Beam Distribution |
|---------------------|----------------------|----------------|---------|------|-------------|--------------------------|------------------------|-------------------|
| LPD3N4B2W | LPD3C4B2W | 3,300 | 33 | 100 | 100-277 VAC | 4000K (neutral white) | Diffused polycarbonate | Diffused |
| LPD3N4H2W | LPD3C4H2W | 6,700 | 66 | 102 | 100-277 VAC | 4000K (neutral white) | Diffused polycarbonate | Diffused |

All values typical unless otherwise stated (tolerance +/- 10%).

Part numbers listed in **bold** are typically available in stock.

Part numbers listed in the table above are neutral white. For cool white models, replace the 6th character with a **C**.

All information provided is, to the best of Dialight's knowledge, accurate as of the date of publication, but is subject to change without notice and does not form part of any contract with Dialight. When ordering please refer to www.dialight.com for current versions of all product documentation, which shall always prevail over all other versions.