

IntelliLED™ Controls: User Guide



Picture for DALI only. Wireless adds external antenna.

NOTE: These parts are NOT user serviceable

Table of Contents

Introduction	4
Technical Specifications	4
Mounting Instructions	5-6
Wiring Instructions	7-8
Counter Balance Mounting Instructions	9
Contact Us	10



READ AND FOLLOW ALL SAFETY INSTRUCTIONS

- Refer to operating temperature ratings of this device before installing.
- DO NOT mount near gas or electric heaters.
- Equipment should be mounted in locations and at heights where it will not be subjected to tampering by unauthorized personnel.
- The use of accessory equipment not recommended by the manufacturer may cause unsafe conditions.
- DO NOT use this equipment for other than intended use.
- DO take pictures of the installation and mounting for future reference.
- Battery life will vary upon traffic area of the install.
- Contact your local Sales representative or Dialight when necessary.
- The installation and maintenance must be carried out by authorized personnel.
- Repairs and installation must only be carried out by a qualified electrician.
- Only genuine or authorized Dialight replacement parts must be used when unforeseen repairs are required.
- Observe the national safety rules and regulations during installation.
- Mounting in extreme heat locations should be avoided. Failure to do so could void all warranties.
- No alterations are allowed without the written agreement from Dialight Corp. Alterations other than written in this manual will void all warranties.

SAVE THESE INSTRUCTIONS!

Introduction

IntelliLED™ Controls overview. This product allows you to customize your entire lighting network using either IntelliLED™ Gateways for wireless or DALI routers for DALI control.

This manual is for installation only of the controls device. Refer to each of the associated products for additional information.

NOTE: This manual does not cover mains wiring or control associated with DALI.

End users and installers are responsible for installing these fixtures in an appropriate and safe environment.

Technical Specifications

Certification	FCC part 15, Canada IC, CE, EN 55016-2-1, EN 55016-2-3, EN 55032, EN 61000-3-2, EN 61000-3-3, EN 61547
AC Power Input	100-277 VAC 50/60Hz, 50mA Max. Modules only
Operating Temperature For Indoor Use Only	Operating Temperature: -40 to 65°C
Wireless Control	2.4Ghz with Dialight Gateway only
DALI Control	2 wire with third party DALI routers
Dimensions	5"L x 5"W x 3"H 12.7cm x 12.7cm x 7.62 cm
Weight	3.5 lb. (1.36 kilograms)
Dialight Part # Wireless	HBXWIRELESSUL2 HBXWIRELESSCE2
Dialight Part # DALI	HBXDALICE2 HBXDALIUL2

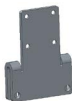
Mounting Instructions



3/4 inch Conduit Strap



3/4 inch Cable Gland



Fixture Bracket

Tools Required:

#2 Philips head screwdriver
5/16 nut drive
5/16 open end wrench
1 inch adjustable wrench
Rubber head mallet

Hardware Supplied:

2x - #8 x 5/16 inch
4x - #10 x 1/2 inch flat head
2x - #1/4-20 x 5/8 inch socket head

The installer is responsible for proper safety precautions while installing.

Inspect: How the existing fixture is mounted

Confirm: Additional load of controls box does not exceed any weight ratings.

NOTE: It is suggested to take the fixture down and add the control the box on the ground

WARNING:

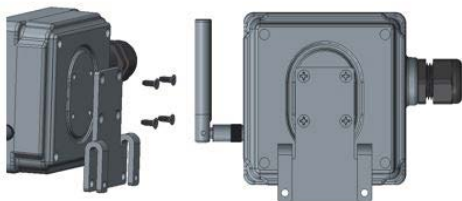
To avoid the risk of sparking, electrocution or electric shock, this product should be installed by a qualified electrician and in accordance with all applicable electrical codes.

To avoid electric shock it may be necessary to turn off breakers or electrical source before and during installation and maintenance.

Do NOT mount on gas lines, water lines, air or other supply lines. Avoid high vibration areas.

**Conduit Mount:**

Secure enclosure onto the conduit using a conduit strap and 2x #8 screw provided. Torque it to 12-17 In lb.

**Mounting on High Bay with Common Box or Hex Box:**

Install bracket onto the enclosure using #10 x 1/2" flat head screws provided. Torque it to 45-50 In lb.

Skip to Step 3 for 480V High Bay with Top Hat:

Install controls module with the bracket onto the outer band of High Bay as shown and secure it using 1/4 x 5/8" screws provided. The recommended torque value is 6 ft-lb for 1/4" hardware.

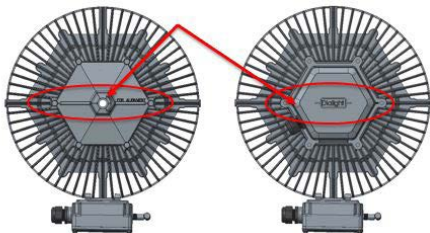
Wiring Instructions

NOTE: Orientation and location of controls module. Photos are for reference only.

Mounting on 480V High Bay with Top Hat

For 480V High Bay with Top hat, install controls module as shown below and secure it using a 1/4 x 5/8" screws provided. The recommended torque value is 6 ft-lb for 1/4" hardware.

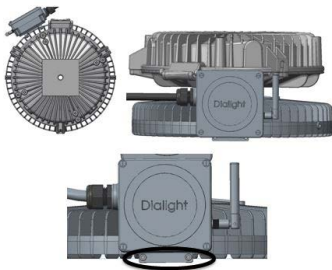
Use alignment feature to install controls module appropriately



Mounting on 480V High Bay with Top Hat:

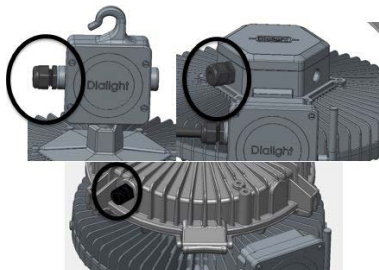
For 480V High Bay with Top hat, install controls module as shown below and secure it using a 1/4 x 5/8" screws provided.

The recommended torque value is 6 ft-lb for 1/4" hardware.



NOTE: The manual is for adding the controls box, thus this manual does not cover mains wiring.

- **Step 1:** Slide connector side of the wireless controls through the provided gland.
- **Step 2:** Open the accessory
- **Step 3:** Install cord grip onto the accessory.

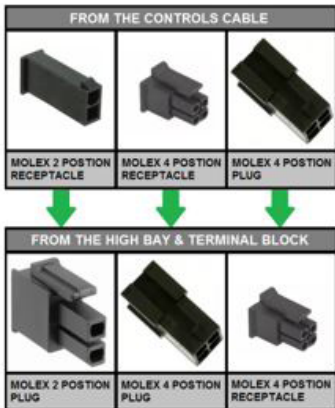


Torque the gland to a maximum of 40 inch pounds

Slide cable through gland so that the outer jacket slightly enters the housing and hand tighten the cord grip.

Disconnect the 4 pin mating connectors and re-connect to new connectors from wireless box. (see below)

Tighten down cord grip by making 3 ¾ inch turns.

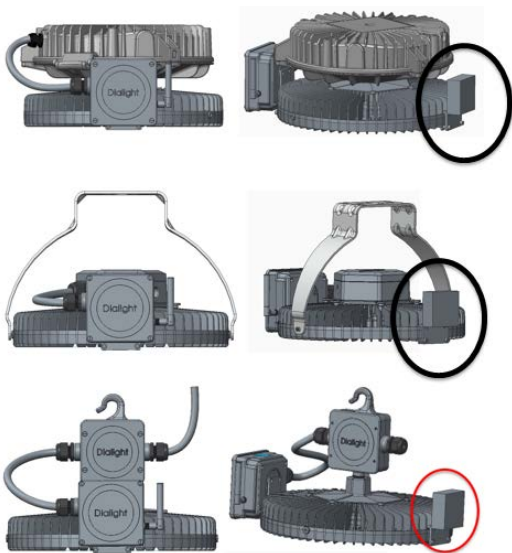


Counter Balance Mounting Instructions:

NOTE: Counter balance is ordered separately

- Install weight on to bracket using 4 flathead screws provided.
- Install counter balance onto the outer band of the High Bay opposite the controls module using 1/4-20 x 3/4" screws provided.

NOTE: A rubber head mallet may be needed to get bracket seated down on to the High Bay and fully tighten supplied hardware



Contact Us

Technical Support

www.dialight.com/contact/technical-support/

North America Headquarters

1501 Route 34 South, Farmingdale New Jersey 07727
+1 732 919 3119

EMEA Technical Centre

Ejby Industrivej 91 B 2600 Glostrup
+45 8877 4545 - Denmark
+44 1638 666541 - UK
+49 89 12089 5713 - Germany
+33 3 23 22 62 58 - France

Australia

108 Howe Street, Osborne Park, Western Australia, 6017
+61 (0) 8 9244 7600

Middle East

205, Clover Bay Tower, Al Abraj Street, Business Bay, P.O. Box 123997 Dubai, U.A.E.
+971 (4) 818 31 56

Brazil

Alameda Mercurio, 225-American Park Empresarial NR Indaiatuba-SP-13347-662
+55 (19) 3113-4300

Houston

16830 Barker Springs Road, Ste 407, Houston TX 77084
+1 732-919-3119

South East Asia

33 Ubi Avenue 3, #07-72 Vertex Tower (Tower A), Singapore 408868
+65 6578 7157



Scan here for our website!

Legal Notice

WARNING / DISCLAIMERS:

Installation & secondary retention. The use of this product without proper installation (including secondary retention / netting) and periodic inspections, could cause severe injury or death. Dialight recommends that all installations should use secondary retention / netting (appropriate to the installation environment) as applicable. Dialight products are intended for ultimate purchase, installation and operation by knowledgeable persons trained in the functional assessment, installation, use and maintenance of such products and all customers (including but not limited to end customers) are responsible for assessing the suitability of Dialight products for any given installation requirement. It is the exclusive responsibility of the contractor, installer and/or end-user to: (a) determine the suitability of the product for its intended application; and, (b) ensure that the product is safely installed (with secondary retention / netting as appropriate) and in compliance with all applicable laws and regulations.

Product specifications & warranties. All product information provided is, to the best of Dialight's knowledge, accurate as of the date of publication. All values and performance data herein are design or typical values when measured under laboratory conditions. The information herein is subject to change without notice. The products / software detailed herein are subject to applicable warranties and terms and conditions of use/purchase. Unless agreed otherwise in writing by an authorized representative of Dialight, Dialight does not represent that its products are fit for any particular purpose and accepts no liability for the installation and/or unauthorised use of its products. When ordering, refer to www.dialight.com for current versions of: (a) relevant product documentation (including relevant product data sheets); (b) Dialight terms and conditions of sale; and, (c) the relevant product warranties. To the extent that any contract is deemed formed between Dialight and the purchaser of Dialight products and/or an end-user, versions of documents available at www.dialight.com as at the date of sale shall be the versions incorporated therein. In the event of any discrepancy between this document and information provided at www.dialight.com, the latter shall prevail.

Exclusion of liability. To the extent permissible under the relevant law, Dialight disclaims all liability for personal injury and/or other damage resulting from any dislodgment or other dislocation of its products. Whilst Dialight has used its reasonable endeavours to ensure the completeness and accuracy of information herein, Dialight does not assume any liability for damages resulting from use of this information or for any third-party representations made in relation to Dialight products.



Contains FCC ID: W7Z-ZICM357SP0

Contains IC: 8254A-ZICM357SP0

This device complies with part 15 of the FCC Rules. Operation is subject to the following two conditions: (1) This device may not cause harmful interference, and (2) this device must accept any interference received, including interference that may cause undesired operation

Note: This equipment has been tested and found to comply with the limits for a Class A digital device, pursuant to part 15 of the FCC Rules. These limits are designed to provide reasonable protection against harmful interference when the equipment is operated in a commercial environment. This equipment generates, uses, and can radiate radio frequency energy and, if not installed and used in accordance with the instruction manual, may cause harmful interference to radio communications. Operation of this equipment in a residential area is likely to cause harmful interference in which case the user will be required to correct the interference at his own expense.

©2019 Dialight Corporation. All rights reserved.

