

IntelliLED™ Daylight Harvesting Sensor (DLH): User Guide

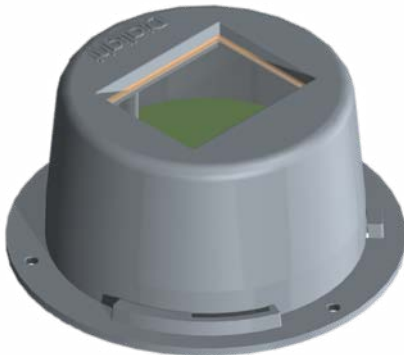


Table of Contents

Safety Instructions	1
Introduction	2
Included Parts	3
Technical Specifications	4
Mounting Instructions	5
Troubleshooting	6
Contact Us	7



Dialight IntelliLED™ Daylight Harvesting Sensor User Guide
READ AND FOLLOW ALL SAFETY INSTRUCTIONS

- Affix UID label on body of the sensor.
- DO NOT let any supply cords touch hot surfaces higher than cord ratings.
- DO NOT mount near gas or electric heaters.
- DO NOT mount near WiFi routers or other wireless devices.
- Equipment should be mounted in locations and at heights where it will not be subjected to tampering by unauthorized personnel.
- The use of accessory equipment not recommended by the manufacturer may cause unsafe conditions.
- DO NOT use this equipment for other than intended use.
- DO NOT mount facing direct sunlight.
- The operation and maintenance must be carried out by authorized personnel.
- Repairs and installation must only be carried out by a qualified electrician.
- Only genuine or authorized Dialight replacement parts must be used when unforeseen repairs are required.
- Observe the national safety rules and regulations during installation.
- Earth grounding is required throughout the install process. Failure to do so could void all warranties.
- No alterations are allowed without the written agreement from Dialight Corp. Alterations other than written in this manual will void all warranties.

SAVE THESE INSTRUCTIONS!

Introduction

Welcome to the IntelliLED™ Daylight Harvesting Sensor (DLH) overview. This product allows you to customize your entire lighting network using independent daylight harvesting sensors throughout your facility while maintaining your desired light levels throughout the day.

Gathering ambient light readings and dimming your light fixtures ensures that the customer reduces power consumption and saves money.

The IntelliLED™ DLH sensor can be used in single sensor or multi-sensor mode. Single sensor mode, light output is controlled directly by a single sensor to deliver the user's desired light level. Multi-sensor mode, the user is able to adjust their desired light level by using the lowest LUX reading, average LUX reading, or highest LUX reading from two or more sensors. There is a limit of 5 DLH sensors per IntelliLED™ Gateway.

Parts Included:

Qty4: Screws M3.5x12mm

Qty4: Screws #8x1/2 inch

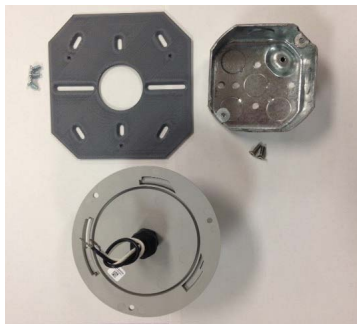
Qty3: Screws #8x1/4 inch

Qty1: Mounting plate

Qty1: UID label

Not Included:

- Junction box



Mounting Plate,
Junction Box (not included) and Sensor

Take Note of the Following Information:

Dialight Catalog Numbers: _____

Date Code: _____

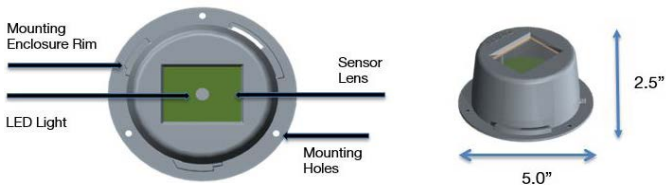
Install Date: _____

UID Number (last 4 digits): _____

Technical Specifications

Description	IntelliLED™ Daylight Harvesting Sensor
Certification	UL 916, CSA C22.2 No. 205, FCC part 15, Canada IC, CE, IEC 61347-1:2015, IEC 61347-2-11:2001 + C1:2001, EN 61000-3-2:2014, 61000-3-3:2013, IEC 60669-2-1:2002+A1:2008+A2:2015, CISPR 15:2013+A1:2015
AC Power Input	100-277 VAC 50/60Hz, 100mA Max.
Operating Temperature	Operating Temperature: -25°C to 65°C
RF Frequency	2.4Ghz
Object Detection	Light
Dimensions	5"D x 2.5"H
Weight	10 oz.
Green LED	Ready to join network: Light blinks twice quickly Identify: Light will blink steadily on/off
Dialight Part #	DLHU124UG2
Lens Material	Acrylic
Housing Material	Grey Polycarbonate

Sensor Overview:

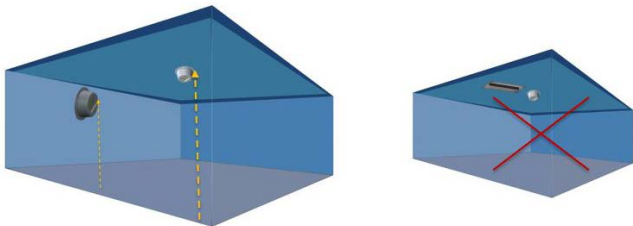


Mounting Instructions

Where to Mount

The IntelliLED™ Daylight Harvesting Sensor can be used as a ceiling or wall mount sensor. This will be user defined depending on the layout of the facility and available ambient light sources.

NOTE: Sensor must not be mounted in direct sunlight



How to Mount

Installation to be performed in accordance with applicable local, regional, and federal regulations.



To avoid the risk of fire, explosion, or electric shock, this product should be installed, inspected, and maintained by a qualified electrician only, in accordance with all applicable electrical codes. To avoid electric shock be certain electrical power is OFF before and during installation and maintenance. Make sure the supply voltage is the same as the rated device voltage.

Install the mounting plate to a suitable outlet/junction box using flat head screws. (#8-1/2" or M3.5x12mm screws provided)

- Connect the power cable conductors as follows:
- Black wire connects to Line
- White wire connects to Neutral

Feed wires into outlet/junction box through mounting plate and affix device using 3x #8x1/4" long screws.

Restore power and verify operation. The sensor will begin to flash green twice indicating it's ready to be added to your gateway. (The green led will flash in a pattern, flash twice, off, flash twice and repeat.)

NOTE: Refer to the Gateway manual for discovering and setting up the DLH sensor.

Troubleshooting

Sensor is Not Discovered by the Gateway.

Steps to solve:

- On the Gateway's lighting controller web page turn discovery on.
- Check the condition of the LED light through the front lens of the sensor.
- If the green light is flashing twice then the sensor is still trying to join a network, then:
 - Verify that it is within 70 ft. of a light that has already joined the network.
 - Verify the nearby lights are powered by commanding them to turn on from the web page.
 - If the DLH sensor still doesn't discover, replace the sensor.
- If the green light is not blinking at all then:
 - Unplug sensor and plug in again. You should see the green LED double blink at least once.
 - Try a node release from the Gateway administration page on the Gateway. (Contact Dialight Sales for the appropriate manual)
 - If it does not blink then replace the sensor.
- If it blinks and stops then it has joined a Gateway. See if it has joined the Gateway you intend. If it has not then check to see if it has joined another Gateway in the building.

Contact Us

Technical Support

www.dialight.com/contact/technical-support/

North America Headquarters

1501 Route 34 South, Farmingdale New Jersey 07727
+1 732 919 3119

EMEA Technical Centre

Ejby Industrivej 91 B 2600 Glostrup
+45 8877 4545 - Denmark
+44 1638 666541 - UK
+49 89 12089 5713 - Germany
+33 3 23 22 62 58 - France

Australia

108 Howe Street, Osborne Park, Western Australia, 6017
+61 (0) 8 9244 7600

Middle East

205, Clover Bay Tower, Al Abraj Street, Business Bay, P.O. Box 123997 Dubai, U.A.E.
+971 (4) 818 31 56

Brazil

Alameda Mercurio, 225-American Park Empresarial NR Indaiatuba-SP-13347-662
+55 (19) 3113-4300

Houston

16830 Barker Springs Road, Ste 407, Houston TX 77084
+1 732-919-3119

South East Asia

33 Ubi Avenue 3, #07-72 Vertex Tower (Tower A), Singapore 408868
+65 6578 7157



Scan here for our website!

www.dialight.com



Legal Notice

WARNING / DISCLAIMERS:

Installation & secondary retention. The use of this product without proper installation (including secondary retention / netting) and periodic inspections, could cause severe injury or death. Dialight recommends that all installations should use secondary retention / netting (appropriate to the installation environment) as applicable. Dialight products are intended for ultimate purchase, installation and operation by knowledgeable persons trained in the functional assessment, installation, use and maintenance of such products and all customers (including but not limited to end customers) are responsible for assessing the suitability of Dialight products for any given installation requirement. It is the exclusive responsibility of the contractor, installer and/or end-user to: (a) determine the suitability of the product for its intended application; and, (b) ensure that the product is safely installed (with secondary retention / netting as appropriate) and in compliance with all applicable laws and regulations.

Product specifications & warranties. All product information provided is, to the best of Dialight's knowledge, accurate as of the date of publication. All values and performance data herein are design or typical values when measured under laboratory conditions. The information herein is subject to change without notice. The products / software detailed herein are subject to applicable warranties and terms and conditions of use/purchase. Unless agreed otherwise in writing by an authorized representative of Dialight, Dialight does not represent that its products are fit for any particular purpose and accepts no liability for the installation and/or unauthorised use of its products. When ordering, refer to www.dialight.com for current versions of: (a) relevant product documentation (including relevant product data sheets); (b) Dialight terms and conditions of sale; and, (c) the relevant product warranties. To the extent that any contract is deemed formed between Dialight and the purchaser of Dialight products and/or an end-user, versions of documents available at www.dialight.com as at the date of sale shall be the versions incorporated therein. In the event of any discrepancy between this document and information provided at www.dialight.com, the latter shall prevail.

Exclusion of liability. To the extent permissible under the relevant law, Dialight disclaims all liability for personal injury and/or other damage resulting from any dislodgment or other dislocation of its products. Whilst Dialight has used its reasonable endeavours to ensure the completeness and accuracy of information herein, Dialight does not assume any liability for damages resulting from use of this information or for any third-party representations made in relation to Dialight products.



Contains FCC ID: W7Z-ZICM357SP0

Contains IC: 8254A-ZICM357SP0

This device complies with part 15 of the FCC Rules. Operation is subject to the following two conditions: (1) This device may not cause harmful interference, and (2) this device must accept any interference received, including interference that may cause undesired operation

Note: This equipment has been tested and found to comply with the limits for a Class A digital device, pursuant to part 15 of the FCC Rules. These limits are designed to provide reasonable protection against harmful interference when the equipment is operated in a commercial environment. This equipment generates, uses, and can radiate radio frequency energy and, if not installed and used in accordance with the instruction manual, may cause harmful interference to radio communications. Operation of this equipment in a residential area is likely to cause harmful interference in which case the user will be required to correct the interference at his own expense.

©2019 Dialight Corporation. All rights reserved.

