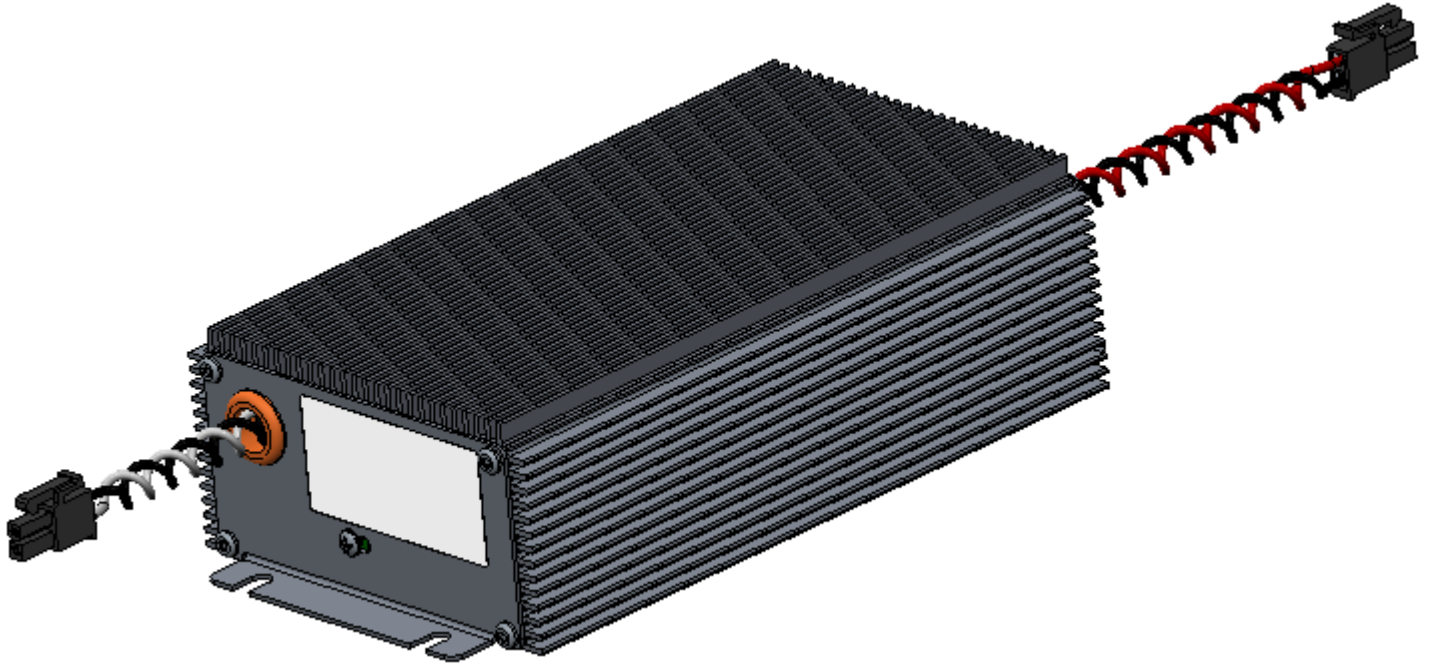


Important Information

These instructions contain safety information, read and follow them carefully. Dialight will not accept any responsibility for injury, damage or loss which may occur due to incorrect installation, operation or maintenance.

Operation/Installation Instructions



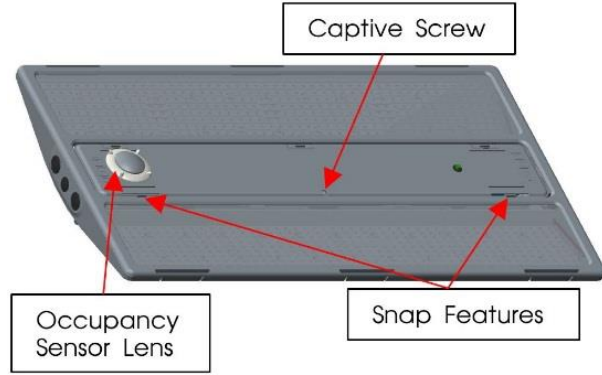
Language	Page Number
English	2

Note: Save these instructions for future use

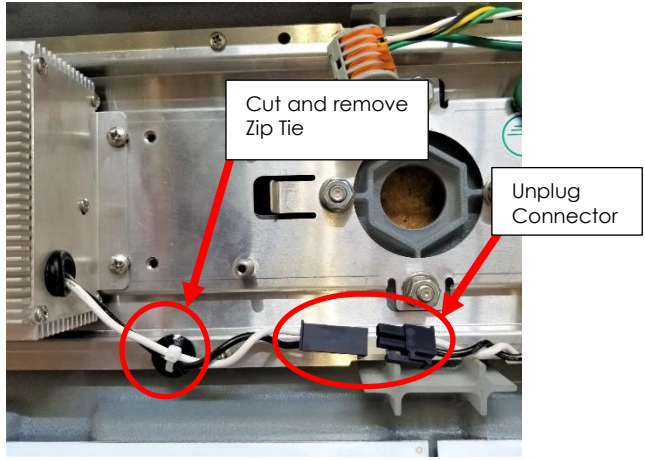
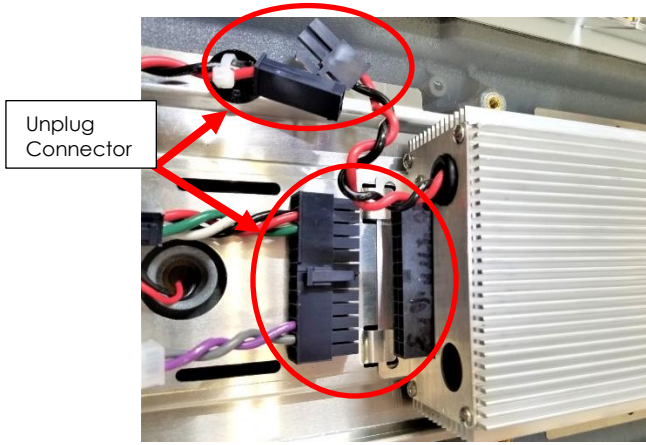
WARNING: Any replacement power supply must be a DIRECT REPLACEMENT for the existing power supply.
 - No changes in lumen output or AC voltage input permitted.

1. Open the access cover on the luminaire by loosening the captive screw. If the luminaire is equipped with a center mounted occupancy sensor, remove the sensor lens by rotating the lens ¼ turn counterclockwise. Then undo the snap features and slide the cover open.

WARNING: To avoid fire and electrical shock, turn off power at circuit breaker or fuse and test that the power is off before wiring.



2. Cut zip tie and disconnect plugs (shown below).



3. Remove 2x 8-32 SEMS screws that hold the power supply to the luminaire (shown below)



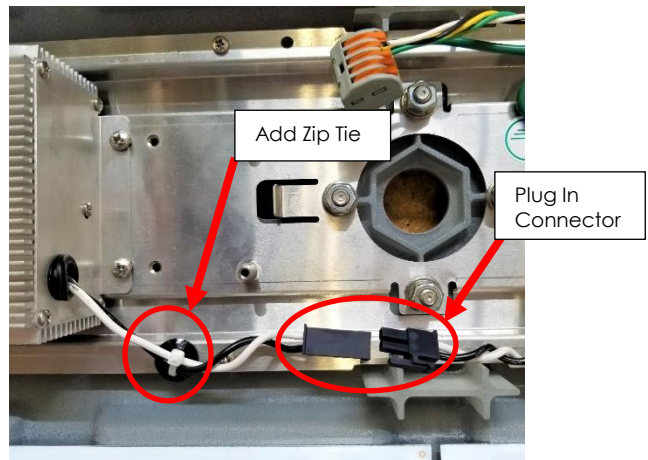
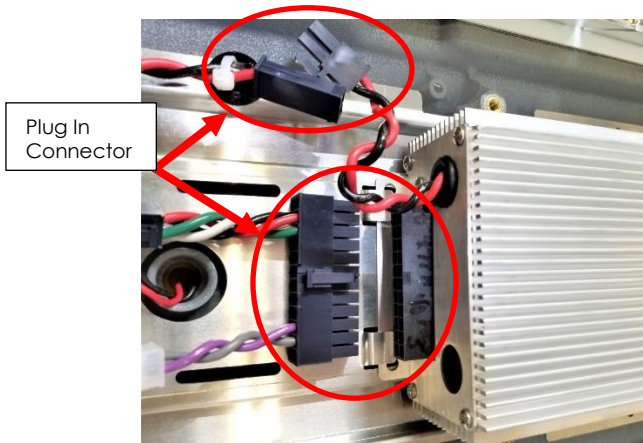
4. Slide the power supply forward out of the rear mounting tabs and lift the supply out of the luminaire and discard according to respective national regulations on waste disposal.



5. Collect the replacement power supply and install into luminaire by sliding fully into the mounting tabs. Install 2x 8-32 SEMS screws loosely to the front of the power supply. Slide the supply forward fully onto the 8-32 SEMS screws. Torque to 14-16 in-lbs.



6. Add zip tie and connect plugs (shown below).



7. Tilt the access cover closed, engage the snap features and tighten the captive screw. Torque to 14-16 in-lbs.
 - a. If the luminaire contains an occupancy sensor, replace the sensor lens by sliding it onto the sensor and then twisting ¼ turn clockwise until snug.
8. Power the luminaire on and insure proper function.
 - a. If the luminaire contains battery backup, press and hold the battery test button for 5 seconds to ensure the luminaire goes into battery backup mode.

Official Statement

All statements, technical information, and recommendations contained herein are based on information and tests that Dialight believes to be reliable. The accuracy or completeness thereof is not guaranteed. In accordance with Dialight "Terms and Conditions of Sale" and since conditions of use are outside our control, the purchaser should determine the suitability of the product for his or her intended use and assumes all risk and liability whatsoever in connection therewith.