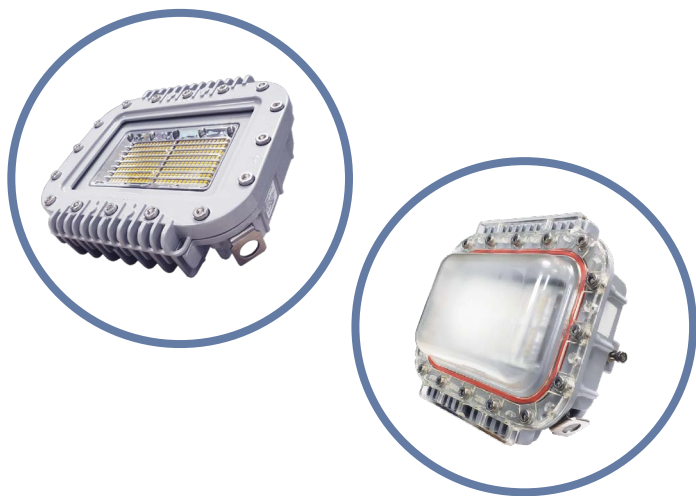


Dialight® LED Area Light

Technical Specification Sheet - Americas

Vigilant® LED Area Light

100-277 VAC, 120-250 VDC

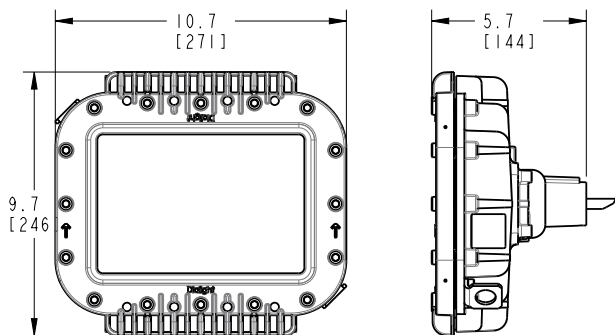


Certifications & Ratings*

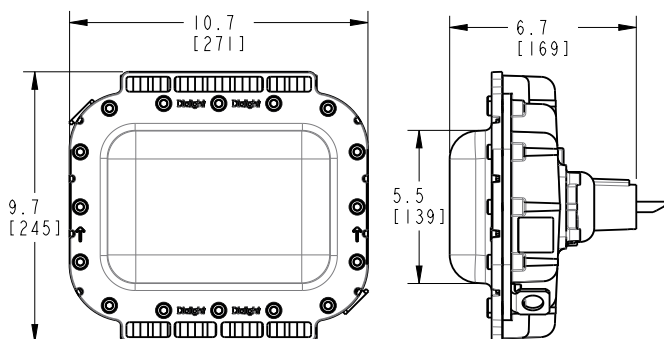
- 10 year warranty
- L70 > 150,000 hours @ 65°C
- UL 1598/A
- CSA C22.2 No. 250
- NOM
- IP66 / 67 / 69
- NEMA 4X
- Factory sealed

*ETL listed

Tempered Glass Lens



Polycarbonate Lens



Dimensions in inches [mm]

Additional dimensional drawings on pages 30-35

Mechanical Information:

| | |
|-------------------------------|--------------------------------------|
| Fixture weight: | 10 lb (4.5 kg) - Polycarbonate lens |
| | 12 lb (5.5 kg) - Tempered glass lens |
| with stainless steel bracket: | 13 lb (5.9 kg) - Polycarbonate lens |
| | 15 lb (6.8 kg) - Tempered glass lens |

Shipping weight: Add 2 lb (0.91 kg) to weights above

Impact rating: IK10 - Polycarbonate lens
IK07 - Tempered glass lens

Cabling: 10' STOOW 1.02 mm 18 AWG

Electrical Specifications:

Operating voltage: 100-277 VAC 50/60Hz, 120-250 VDC

Operating temperature: -40°F to +149°F (-40°C to +65°C)

EMC: FCC Title 47, Subpart B, Section 15,
Class A device
CISPR-15
RF Immunity 20V/m 80MHz-1GHz.

Transient protection: 6 kV, 2 Ohm line-line and line-ground

Harmonics: IEC 61000-3-2, Class C

THD: < 20%

Power factor: > 0.9

Construction:

Housing: Copper-free aluminum

Finish: Superior dual coat finish
- Sealed polyester topcoat
- Epoxy primer

Lens: Hard-coated polycarbonate
Tempered glass

Photometric Information:

CRI: 80

CCT: 5000K (cool white)
4000K (neutral white)

Optics: 360°
180° forward throw for 45° mounting
Wide for 0° mounting

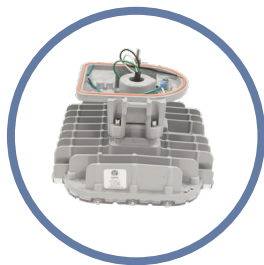
All values typical unless otherwise stated (tolerance +/- 10%)

WARNING - INSTALLATION & SECONDARY RETENTION. Use of any Dialight products without proper installation (including secondary retention / netting) and periodic inspections could cause severe injury or death. Dialight recommends that all installations should use secondary retention / netting (appropriate to the installation environment) where applicable. It is the exclusive responsibility of the contractor, installer and/or end-user to: (a) determine the suitability of the product for its intended application; and, (b) ensure that the product is safely installed (with secondary retention / netting where appropriate) and in compliance with all applicable laws and regulations. To the extent permissible under applicable laws, Dialight disclaims all liability for personal injury and/or other damage resulting from any dislodgment or other dislocation of its products.

Vigilant® LED Area Light

100-277 VAC, 120-250 VDC with Universal Mounting Adapter

Universal Mounting Adapter



For use with HZXW01, HZXW45, HZXS45 or HZXFM brackets sold separately



HZXW01



HZXS45



HZXCV34

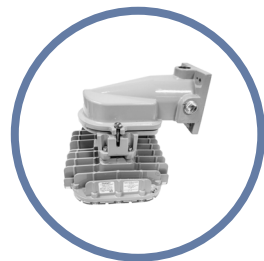


HZXW45

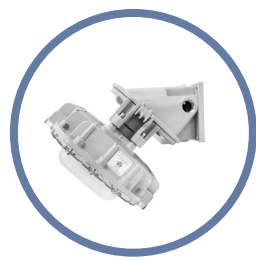


HZXFM

Wall & Ceiling Mount



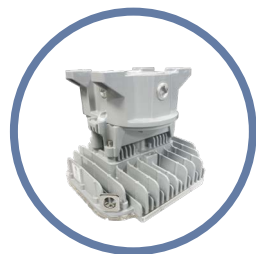
45° Wall Mount



45° Stanchion Mount



Ceiling Mount



Conveyor Mount



Certifications & Ratings*

- 10 year warranty
- L70 > 150,000h @ 65°C
- UL 1598/A
- CSA C22.2 No. 250
- NOM
- IP66 / 67 / 69
- NEMA 4X
- Factory sealed

*ETL listed

Mechanical Information:

Fixture weight:

| | |
|------------------------|--------------------------------------|
| UMA models: | 12 lb (5.5 kg) - Polycarbonate lens |
| | 15 lb (6.8 kg) - Tempered glass lens |
| Wall mount models: | 15 lb (6.8 kg) - Polycarbonate lens |
| | 18 lb (8.2 kg) - Tempered glass lens |
| 45° wall mount models: | 14 lb (6.4 kg) - Polycarbonate lens |
| | 17 lb (7.7 kg) - Tempered glass lens |
| 45° stanchion mount: | 15 lb (6.8 kg) - Polycarbonate lens |
| | 18 lb (8.2 kg) - Tempered glass lens |
| Ceiling mount: | 14 lb (6.4 kg) - Polycarbonate lens |
| | 7 lb (7.7 kg) - Tempered glass lens |

Shipping weight:

Add 2 lb (0.91 kg) to weights above

Impact rating:

IK10 - Polycarbonate lens
IK07 - Tempered glass lens

Cabling:

14" leads 1.02 mm 18 AWG

Electrical Specifications:

Operating voltage: 100-277 VAC 50/60 Hz, 120-250 VDC

Operating temperature: -40°F to +149°F (-40°C to +65°C)

EMC: FCC Title 47, Subpart B, Section 15, Class A device
CISPR-15
RF Immunity 20V/m 80MHz-1GHz.

Transient protection: 6 kV, 2 Ohm line-line and line-ground

Harmonics: IEC 61000-3-2, Class C

THD: < 20%

Power factor: > 0.9

Construction:

Housing: Copper-free aluminum

Finish: Superior dual coat finish
- Sealed polyester topcoat
- Epoxy primer

Lens: Hard-coated polycarbonate
Tempered glass

Photometric Information:

CRI: 80

CCT: 5000K (cool white)
4000K (neutral white)

Optics: 360°
180° forward throw for 45° mounting
Wide for 0° mounting

All values typical unless otherwise stated (tolerance +/- 10%)

Additional dimensional drawings on pages 30-35

WARNING - INSTALLATION & SECONDARY RETENTION. Use of any Dialight products without proper installation (including secondary retention / netting) and periodic inspections could cause severe injury or death. Dialight recommends that all installations should use secondary retention / netting (appropriate to the installation environment) where applicable. It is the exclusive responsibility of the contractor, installer and/or end-user to: (a) determine the suitability of the product for its intended application; and, (b) ensure that the product is safely installed (with secondary retention / netting where appropriate) and in compliance with all applicable laws and regulations. To the extent permissible under applicable laws, Dialight disclaims all liability for personal injury and/or other damage resulting from any dislodgment or other dislocation of its products.

Vigilant® LED Area Light

100-277 VAC, 120-250 VDC



| Project Information | |
|---------------------|-------|
| Part Number: | |
| Project: | |
| Fixture Type: | Date: |

| Specifications |
|----------------|
| |
| |
| |

Ordering Information

| | | | | | | | | | | | | | | | | | | | | | | | | |
|--------------|---|-------|---|---------------|---|------------|---|-----------|---|---------------|---|------------|---|----------|---|------------------|---|------------|---|----------------|---|----------|--|---------|
| AL | - | U | - | | - | | - | | - | 2 | - | | - | | - | | - | N | - | G | - | N | | |
| Product Code | | Cert. | | Lens Material | | Beam Dist. | | CCT & CRI | | Oper. Voltage | | Lumen Type | | Controls | | Mounting Options | | HW Access. | | Elect. Access. | | Coatings | | Battery |

| | | | |
|--|--|---|---|
| Product Code AL Area Light | CCT & CRI C Cool White 5000K - 80 CRI N Neutral White 4000K - 80 CRI | Mounting Options <div> <div></div> Retro-fit Adapter <div></div> Universal Mounting Adapter (UMA) </div> B Swivel Bracket, Locking 0° - 90° 316 Stainless Steel N 3/4" NPT Pendant A Appleton Mercmaster III C Crouse-Hinds - Champ G GE Filtr-Gard H Thomas & Betts Hazlux K Killark Certilite & Certilite V M Appleton Mercmaster II P Holophane Petrolux II and III F Ceiling Mount S 45° Stanchion Mount (S45) U UMA - Mounting Hub V 0° Wall Mount (W01) W 45° Wall Mount (W45) Y 34mm Conveyor Mount | Hardware Accessories N For Mounting Options - A, C, F, G, H, K, M, S, U, V, W, Y (individual wire leads are terminated in adapter housing) W 10 ft (3 meter) Power Cable for Mounting Options - B, N |
| Certification U UL 1598/A CSA 22.2 No. 250.0 | Operating Voltage 2 100-277 VAC, 120-250 VDC | | |
| Lens Material 5 Polycarbonate - Diffused 7 Tempered Glass - Clear | Lumen Type 3 3,100 Lumens 4 4,200 Lumens 6 5,700 Lumens 7 7,300 Lumens 9 9,000 Lumens *For lumen output see page 21 | | |
| Beam Distribution A 180° B 360° W Wide | Controls D Dimming (0-10V) N No Option | | Electrical Accessories N No Option |
| | | | Coatings G Gray (RAL 7040) |
| | | | Battery N No Option |

Notes

- 1) When ordering Beam Distribution W - Wide: Lumen Type = 7.
- 2) When ordering Mounting Options "UMA" or "Retro-fit": Hardware Accessories = N.
- 3) When ordering Mounting Option U - UMA Mounting Hub HZXW01, HZXW45, HZXS45, HZXFM or HZXCVC34 are required. See page 28 for details.
- 4) Lumen outputs shown are for Tempered Glass lens, 360° optic. For additional options please see page 21.

DISCLAIMER. All product information provided is, to the best of Dialight's knowledge, accurate as of the date of publication. When ordering, refer to www.dialight.com for current versions of: (a) relevant product documentation (including the relevant product data sheets); (b) Dialight terms and conditions of sale; and, (c) the relevant product warranty. To the extent that any contract is deemed formed between Dialight and the purchaser of Dialight products and/or an end-user, versions of documents available at www.dialight.com as at the date of sale shall be the versions incorporated therein. In the event of any discrepancy between this document or information provided at www.dialight.com, the latter shall prevail.

Ordering Information

Vigilant® LED Area Light - 100-277 VAC, 120-250 VDC



| 100-277 VAC, 120-250 VDC Model | | | | | | | | |
|---|------------------------|---------|------|-----|------------------------|-------------------|-----------------|-------------------------|
| Part Number | Initial Fixture Lumens | Wattage | lm/W | CCT | Lens | Beam Distribution | Controls Option | Mounting |
| ALU-7AC2-9NNW-NGN | 8,800 | 66 | 133 | CW | Tempered Glass | 180° | No Option | 3/4" NPT |
| ALU-5AC2-9NNW-NGN | 8,100 | 66 | 123 | CW | Polycarbonate Diffused | 180° | No Option | 3/4" NPT |
| ALU-7BC2-9NNW-NGN | 9,000 | 66 | 136 | CW | Tempered Glass | 360° | No Option | 3/4" NPT |
| ALU-5BC2-9NNW-NGN | 8,300 | 66 | 126 | CW | Polycarbonate Diffused | 360° | No Option | 3/4" NPT |
| ALU-7AC2-7NNW-NGN | 7,100 | 52 | 137 | CW | Tempered Glass | 180° | No Option | 3/4" NPT |
| ALU-5AC2-7NNW-NGN | 6,600 | 52 | 127 | CW | Polycarbonate Diffused | 180° | No Option | 3/4" NPT |
| ALU-7BC2-7NNW-NGN | 7,300 | 52 | 140 | CW | Tempered Glass | 360° | No Option | 3/4" NPT |
| ALU-5BC2-7NNW-NGN | 6,700 | 52 | 129 | CW | Polycarbonate Diffused | 360° | No Option | 3/4" NPT |
| ALU-7WC2-7NNW-NGN | 7,300 | 64 | 114 | CW | Tempered Glass | Wide | No Option | 3/4" NPT |
| ALU-5WC2-7NNW-NGN | 6,700 | 64 | 105 | CW | Polycarbonate Diffused | Wide | No Option | 3/4" NPT |
| ALU-7AC2-6NNW-NGN | 5,500 | 40 | 138 | CW | Tempered Glass | 180° | No Option | 3/4" NPT |
| ALU-5AC2-6NNW-NGN | 5,100 | 40 | 128 | CW | Polycarbonate Diffused | 180° | No Option | 3/4" NPT |
| ALU-7BC2-6NNW-NGN | 5,700 | 40 | 143 | CW | Tempered Glass | 360° | No Option | 3/4" NPT |
| ALU-5BC2-6NNW-NGN | 5,300 | 40 | 133 | CW | Polycarbonate Diffused | 360° | No Option | 3/4" NPT |
| ALU-7AC2-4NNW-NGN | 4,100 | 30 | 137 | CW | Tempered Glass | 180° | No Option | 3/4" NPT |
| ALU-5AC2-4NNW-NGN | 3,800 | 30 | 127 | CW | Polycarbonate Diffused | 180° | No Option | 3/4" NPT |
| ALU-7BC2-4NNW-NGN | 4,200 | 30 | 140 | CW | Tempered Glass | 360° | No Option | 3/4" NPT |
| ALU-5BC2-4NNW-NGN | 3,900 | 30 | 130 | CW | Polycarbonate Diffused | 360° | No Option | 3/4" NPT |
| ALU-7AC2-3NNW-NGN | 3,000 | 24 | 125 | CW | Tempered Glass | 180° | No Option | 3/4" NPT |
| ALU-5AC2-3NNW-NGN | 2,800 | 24 | 117 | CW | Polycarbonate Diffused | 180° | No Option | 3/4" NPT |
| ALU-7BC2-3NNW-NGN | 3,100 | 24 | 129 | CW | Tempered Glass | 360° | No Option | 3/4" NPT |
| ALU-5BC2-3NNW-NGN | 2,800 | 24 | 117 | CW | Polycarbonate Diffused | 360° | No Option | 3/4" NPT |
| 100-277 VAC, 120-250 VDC Model with Retro-fit Adapters - Crouse Hinds | | | | | | | | |
| ALU-7BC2-7NCN-NGN | 7,300 | 52 | 140 | CW | Tempered Glass | 360° | No Option | Retro-fit: Crouse Hinds |
| ALU-5BC2-7NCN-NGN | 6,700 | 52 | 129 | CW | Polycarbonate Diffused | 360° | No Option | Retro-fit: Crouse Hinds |
| ALU-7BC2-6NCN-NGN | 5,700 | 40 | 143 | CW | Tempered Glass | 360° | No Option | Retro-fit: Crouse Hinds |
| ALU-5BC2-6NCN-NGN | 5,300 | 40 | 133 | CW | Polycarbonate Diffused | 360° | No Option | Retro-fit: Crouse Hinds |
| 100-277 VAC, 120-250 VDC Model with Retro-fit Adapters - GE | | | | | | | | |
| ALU-7BC2-7NGN-NGN | 7,300 | 52 | 140 | CW | Tempered Glass | 360° | No Option | Retro-fit: GE |
| ALU-5BC2-7NGN-NGN | 6,700 | 52 | 129 | CW | Polycarbonate Diffused | 360° | No Option | Retro-fit: GE |
| ALU-7BC2-6NGN-NGN | 5,700 | 40 | 143 | CW | Tempered Glass | 360° | No Option | Retro-fit: GE |
| ALU-5BC2-6NGN-NGN | 5,300 | 40 | 133 | CW | Polycarbonate Diffused | 360° | No Option | Retro-fit: GE |

See ordering chart for additional options.

For products that require 0-10V dimming, replace the 9th character "N" with "D". ALU-7BC2-9NNW-NGN becomes ALU-7BC2-9DNW-NGN.

0-10V dimming products are supplied with a 5 conductor cable.

DISCLAIMER. All product information provided is, to the best of Dialight's knowledge, accurate as of the date of publication. When ordering, refer to www.dialight.com for current versions of: (a) relevant product documentation (including the relevant product data sheets); (b) Dialight terms and conditions of sale; and, (c) the relevant product warranty. To the extent that any contract is deemed formed between Dialight and the purchaser of Dialight products and/or an end-user, versions of documents available at www.dialight.com as at the date of sale shall be the versions incorporated therein. In the event of any discrepancy between this document or information provided at www.dialight.com, the latter shall prevail.

Ordering Information

Vigilant® LED Area Light - 100-277 VAC, 120-250 VDC

with Universal Mounting Adapter



| 100-277 VAC, 120-250 VDC with Universal Mounting Adapter | | | | | | | | |
|--|------------------------|---------|------|-----|------------------------|-------------------|-----------------|---------------|
| Part Number | Initial Fixture Lumens | Wattage | lm/W | CCT | Lens | Beam Distribution | Controls Option | Mounting |
| ALU-7AC2-7NUN-NGN | 7,100 | 52 | 137 | CW | Tempered Glass | 180° | No Option | UMA Hub |
| ALU-5AC2-7NUN-NGN | 6,600 | 52 | 127 | CW | Polycarbonate Diffused | 180° | No Option | UMA Hub |
| ALU-7BC2-7NUN-NGN | 7,300 | 52 | 140 | CW | Tempered Glass | 360° | No Option | UMA Hub |
| ALU-5BC2-7NUN-NGN | 6,700 | 52 | 129 | CW | Polycarbonate Diffused | 360° | No Option | UMA Hub |
| ALU-7AC2-6NUN-NGN | 5,500 | 40 | 138 | CW | Tempered Glass | 180° | No Option | UMA Hub |
| ALU-5AC2-6NUN-NGN | 5,100 | 40 | 128 | CW | Polycarbonate Diffused | 180° | No Option | UMA Hub |
| ALU-7BC2-6NUN-NGN | 5,700 | 40 | 143 | CW | Tempered Glass | 360° | No Option | UMA Hub |
| ALU-5BC2-6NUN-NGN | 5,300 | 40 | 133 | CW | Polycarbonate Diffused | 360° | No Option | UMA Hub |
| ALU-7AC2-7NSN-NGN | 7,100 | 52 | 137 | CW | Tempered Glass | 180° | No Option | 45° Stanchion |
| ALU-5AC2-7NSN-NGN | 6,600 | 52 | 127 | CW | Polycarbonate Diffused | 180° | No Option | 45° Stanchion |
| ALU-7AC2-6NSN-NGN | 5,500 | 40 | 138 | CW | Tempered Glass | 180° | No Option | 45° Stanchion |
| ALU-5AC2-6NSN-NGN | 5,100 | 40 | 128 | CW | Polycarbonate Diffused | 180° | No Option | 45° Stanchion |
| ALU-7AC2-4NSN-NGN | 4,100 | 30 | 137 | CW | Tempered Glass | 180° | No Option | 45° Stanchion |
| ALU-5AC2-4NSN-NGN | 3,800 | 30 | 127 | CW | Polycarbonate Diffused | 180° | No Option | 45° Stanchion |
| ALU-7AC2-7NWN-NGN | 7,100 | 52 | 137 | CW | Tempered Glass | 180° | No Option | 45° Wall |
| ALU-5AC2-7NWN-NGN | 6,600 | 52 | 127 | CW | Polycarbonate Diffused | 180° | No Option | 45° Wall |
| ALU-7AC2-6NWN-NGN | 5,500 | 40 | 138 | CW | Tempered Glass | 180° | No Option | 45° Wall |
| ALU-5AC2-6NWN-NGN | 5,100 | 40 | 128 | CW | Polycarbonate Diffused | 180° | No Option | 45° Wall |
| ALU-7AC2-4NWN-NGN | 4,100 | 30 | 137 | CW | Tempered Glass | 180° | No Option | 45° Wall |
| ALU-5AC2-4NWN-NGN | 3,800 | 30 | 127 | CW | Polycarbonate Diffused | 180° | No Option | 45° Wall |
| ALU-7AC2-7NVN-NGN | 7,100 | 52 | 137 | CW | Tempered Glass | 180° | No Option | 0° Wall |
| ALU-5AC2-7NVN-NGN | 6,600 | 52 | 127 | CW | Polycarbonate Diffused | 180° | No Option | 0° Wall |
| ALU-7AC2-6NVN-NGN | 5,500 | 40 | 138 | CW | Tempered Glass | 180° | No Option | 0° Wall |
| ALU-5AC2-6NVN-NGN | 5,100 | 40 | 128 | CW | Polycarbonate Diffused | 180° | No Option | 0° Wall |
| ALU-7AC2-4NVN-NGN | 4,100 | 30 | 137 | CW | Tempered Glass | 180° | No Option | 0° Wall |
| ALU-5AC2-4NVN-NGN | 3,800 | 30 | 127 | CW | Polycarbonate Diffused | 180° | No Option | 0° Wall |
| ALU-7BC2-7NFN-NGN | 7,100 | 52 | 137 | CW | Tempered Glass | 360° | No Option | Ceiling Mount |
| ALU-5BC2-7NFN-NGN | 6,600 | 52 | 127 | CW | Polycarbonate Diffused | 360° | No Option | Ceiling Mount |
| ALU-7BC2-6NFN-NGN | 5,500 | 40 | 138 | CW | Tempered Glass | 360° | No Option | Ceiling Mount |
| ALU-5BC2-6NFN-NGN | 5,100 | 40 | 128 | CW | Polycarbonate Diffused | 360° | No Option | Ceiling Mount |
| ALU-7BC2-4NFN-NGN | 4,100 | 30 | 137 | CW | Tempered Glass | 360° | No Option | Ceiling Mount |
| ALU-5BC2-4NFN-NGN | 3,800 | 30 | 127 | CW | Polycarbonate Diffused | 360° | No Option | Ceiling Mount |

See ordering chart for additional options.

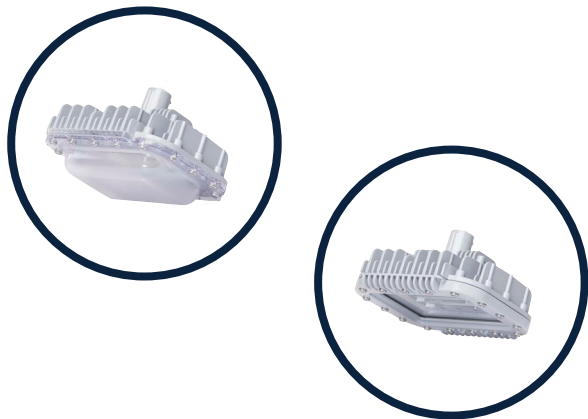
For products that require 0-10V dimming, replace the 9th character "N" with "D". ALU-7BC2-9NNW-NGN becomes ALU-7BC2-9DNW-NGN.

0-10V dimming products are supplied with a 5 conductor cable.

DISCLAIMER. All product information provided is, to the best of Dialight's knowledge, accurate as of the date of publication. When ordering, refer to www.dialight.com for current versions of: (a) relevant product documentation (including the relevant product data sheets); (b) Dialight terms and conditions of sale; and, (c) the relevant product warranty. To the extent that any contract is deemed formed between Dialight and the purchaser of Dialight products and/or an end-user, versions of documents available at www.dialight.com as at the date of sale shall be the versions incorporated therein. In the event of any discrepancy between this document or information provided at www.dialight.com, the latter shall prevail.

DuroSite® LED Area Light

347/480 VAC

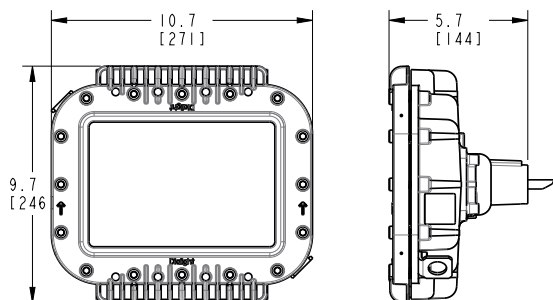


Certifications & Ratings*

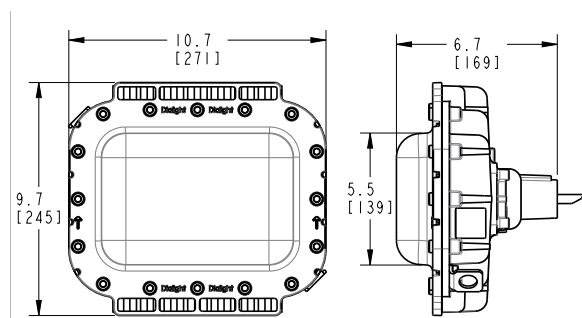
- 5 year warranty
- L70 > 100,000h @ 25°C
- UL 1598/A
- CSA C22.2 No. 250
- NOM
- IP66 / 67
- NEMA 4X

*ETL listed

Tempered Glass Lens



Polycarbonate Lens



Dimensions in inches [mm]
Additional dimensional drawings on pages 30-35

Mechanical Information:

Fixture weight: 10 lb (4.5 kg) - Polycarbonate lens
12 lb (5.5 kg) - Tempered glass lens
with stainless steel bracket: 13 lb (5.9 kg) - Polycarbonate lens
15 lb (6.8 kg) - Tempered glass lens

Shipping weight: Add 2 lb (0.91 kg) to weights above

Cabling: 10' (3.5 m) 5 conductor SOOW
14" (0.4 m) 5 conductor SOOW
Terminal block option available for wall,
wall 45° and stanchion 45°

Impact rating: IK10 - Polycarbonate lens
IK07 - Tempered glass lens

Cabling: 10' ST00W 1.02 mm 18 AWG

Electrical Specifications:

Operating voltage: 347/480 VAC

Total system power consumption: See table

Operating temperature: -40°F to +149°F (-40°C to +65°C)

EMC: FCC Title 47, Subpart B, Section 15,
Class A device
CISPR-15
RF Immunity 20V/m 80MHz-1GHz.

Transient protection: 6 kV, 2 Ohm line-line and line-ground

Harmonics: IEC 61000-3-2, Class C

THD: < 20%

Power factor: > 0.9

Construction:

Housing: Copper-free aluminum

Finish: Superior dual coat finish
- Sealed polyester topcoat
- Epoxy primer

Lens: Hard-coated polycarbonate
Tempered glass

Photometric Information:

CRI: 75

CCT: 5000K (cool white)

Optics: 360°
180° forward throw for 45° mounting
Wide for 0° mounting

All values typical unless otherwise stated (tolerance +/- 10%)

WARNING - INSTALLATION & SECONDARY RETENTION. Use of any Dialight products without proper installation (including secondary retention / netting) and periodic inspections could cause severe injury or death. Dialight recommends that all installations should use secondary retention / netting (appropriate to the installation environment) where applicable. It is the exclusive responsibility of the contractor, installer and/or end-user to: (a) determine the suitability of the product for its intended application; and, (b) ensure that the product is safely installed (with secondary retention / netting where appropriate) and in compliance with all applicable laws and regulations. To the extent permissible under applicable laws, Dialight disclaims all liability for personal injury and/or other damage resulting from any dislodgment or other dislocation of its products.

DuroSite® LED Area Light

347/480 VAC



| Project Information | | |
|---------------------|--|-------|
| Part Number: | | |
| Project: | | |
| Fixture Type: | | Date: |

| Specifications |
|----------------|
| |
| |
| |
| |

Ordering Information

| | | | | | | | | | | | | | | | | | | | | | | | | |
|--------------|---|----------|---|---------------|---|------------|---|-----------|---|---------------|---|------------|---|----------|---|------------------|---|------------|---|----------------|---|----------|---|----------|
| AL | - | U | - | | - | | - | B | - | 5 | - | | - | N | - | | - | | - | N | - | G | - | N |
| Product Code | | Cert. | | Lens Material | | Beam Dist. | | CCT & CRI | | Oper. Voltage | | Lumen Type | | Controls | | Mounting Options | | HW Access. | | Elect. Access. | | Coatings | | Battery |

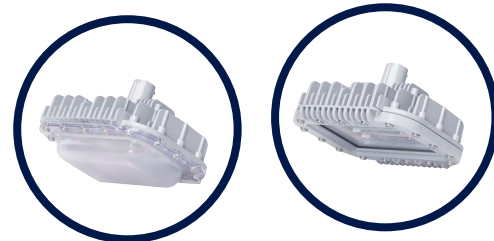
| | | | |
|--|--|---|---|
| Product Code AL Area Light | CCT & CRI B Cool White 5000K - 70 CRI | Mounting Options <div> <div></div> Retro-fit Adapter </div> <div> <div></div> Universal Mounting Adapter (UMA) </div> B Swivel Bracket, Locking 0° - 90° 316 Stainless Steel N 3/4" NPT Pendant A Appleton Mercmaster III C Crouse-Hinds - Champ G GE Filtr-Gard H Thomas & Betts Hazlux K Killark Certilite & Certilite V M Appleton Mercmaster II P Holophane Petrolux II and III F Ceiling Mount S 45° Stanchion Mount (S45) U UMA - Mounting Hub V 0° Wall Mount (W01) W 45° Wall Mount (W45) Y 34mm Conveyor Mount | Hardware Accessories N For Mounting Options - A, C, F, G, H, K, M, S, U, V, W, Y (individual wire leads are terminated in adapter housing) W 10 ft (3 meter) Power Cable for Mounting Options - B, N |
| Certification U UL 1598/A CSA 22.2 No. 250.0 | Operating Voltage 5 347/480 VAC | | |
| Lens Material 5 Polycarbonate - Diffused 7 Tempered Glass - Clear | Lumen Type 2 2,200 Lumens 4 4,000 Lumens 5 5,000 Lumens 6 6,000 Lumens 7 7,200 Lumens *For lumen output see page 22 | | |
| Beam Distribution A 180° B 360° | Controls N No Options | | Electrical Accessories N No Option |
| | | | Coatings G Gray (RAL 7040) |
| | | | Battery N No Option |

| Notes |
|---|
| 1) When using "UMA" or "Retro-fit" mounting options, Hardware Accessories = N. |
| 2) Not all lumen options available for all voltage options, consult table. |
| 3) When ordering Mounting Option U - UMA Mounting Hub HZXW01, HZXW45, HZXS45, HZXF45 or HZXC45 are required. See page 28 for details. |
| 4) Lumen outputs shown are for Tempered Glass lens, 360° optic. For additional options please see page 21. |

DISCLAIMER. All product information provided is, to the best of Dialight's knowledge, accurate as of the date of publication. When ordering, refer to www.dialight.com for current versions of: (a) relevant product documentation (including the relevant product data sheets); (b) Dialight terms and conditions of sale; and, (c) the relevant product warranty. To the extent that any contract is deemed formed between Dialight and the purchaser of Dialight products and/or an end-user, versions of documents available at www.dialight.com as at the date of sale shall be the versions incorporated therein. In the event of any discrepancy between this document or information provided at www.dialight.com, the latter shall prevail.

Ordering Information

DuroSite® LED Area Light - 347/480 VAC



| 347/480 VAC Model | | | | | | | | |
|---|------------------------|---------|------|-----|------------------------|-------------------|-----------------|-------------------------|
| Part Number | Initial Fixture Lumens | Wattage | lm/W | CCT | Lens | Beam Distribution | Controls Option | Mounting |
| ALU-7BB5-7NNW-NGN | 7,000 | 68 | 103 | CW | Tempered Glass | 360° | No Option | 3/4" NPT |
| ALU-5BB5-7NNW-NGN | 6,900 | 68 | 101 | CW | Poylcarbonate Diffused | 360° | No Option | 3/4" NPT |
| ALU-7AB5-7NNW-NGN | 7,000 | 68 | 103 | CW | Tempered Glass | 180° | No Option | 3/4" NPT |
| ALU-5AB5-7NNW-NGN | 6,900 | 68 | 101 | CW | Poylcarbonate Diffused | 180° | No Option | 3/4" NPT |
| ALU-7BB5-6NNW-NGN | 6,000 | 58 | 103 | CW | Tempered Glass | 360° | No Option | 3/4" NPT |
| ALU-5BB5-6NNW-NGN | 5,700 | 58 | 98 | CW | Poylcarbonate Diffused | 360° | No Option | 3/4" NPT |
| ALU-7AB5-6NNW-NGN | 6,000 | 58 | 103 | CW | Tempered Glass | 180° | No Option | 3/4" NPT |
| ALU-5AB5-6NNW-NGN | 6,000 | 58 | 103 | CW | Poylcarbonate Diffused | 180° | No Option | 3/4" NPT |
| ALU-7BB5-4NNW-NGN | 4,000 | 38 | 105 | CW | Tempered Glass | 360° | No Option | 3/4" NPT |
| ALU-5BB5-4NNW-NGN | 4,000 | 38 | 105 | CW | Poylcarbonate Diffused | 360° | No Option | 3/4" NPT |
| ALU-7AB5-4NNW-NGN | 4,000 | 38 | 105 | CW | Tempered Glass | 180° | No Option | 3/4" NPT |
| ALU-5AB5-4NNW-NGN | 4,000 | 38 | 105 | CW | Poylcarbonate Diffused | 180° | No Option | 3/4" NPT |
| 100-277 VAC, 120-250 VDC Model with Retro-fit Adapters - Crouse Hinds | | | | | | | | |
| ALU-7BB5-6NCN-NGN | 6,000 | 58 | 103 | CW | Tempered Glass | 360° | No Option | Retro-fit: Crouse Hinds |
| ALU-5BB5-6NCN-NGN | 6,000 | 58 | 103 | CW | Poylcarbonate Diffused | 360° | No Option | Retro-fit: Crouse Hinds |
| ALU-7AB5-6NCN-NGN | 6,000 | 58 | 103 | CW | Tempered Glass | 180° | No Option | Retro-fit: Crouse Hinds |
| ALU-5AB5-6NCN-NGN | 6,000 | 58 | 103 | CW | Poylcarbonate Diffused | 180° | No Option | Retro-fit: Crouse Hinds |

See ordering chart for additional options.

SafeSite® LED Area Light

100-277 VAC, 120-250 VDC



Certifications & Ratings*

- 10 year warranty
- L70 > 150,000 hours @ 65°C
- UL 844, UL 1598/A
- CSA C22.2 No. 250
- CSA C22.2 No. 137-M81
- IP66 / 67 / 69
- NEMA 4X
- Factory sealed

ALD:

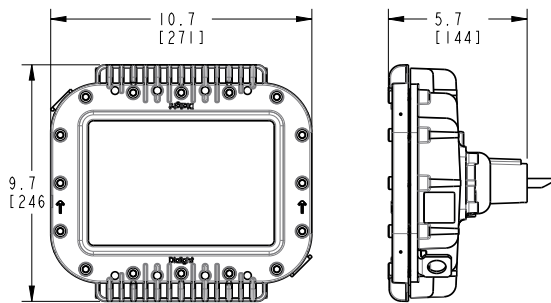
- Class I, Div. 2, Groups A, B, C, D
- Class I, Zone 2, Group IIC
- Class III, Div. 1 & 2

ALF:

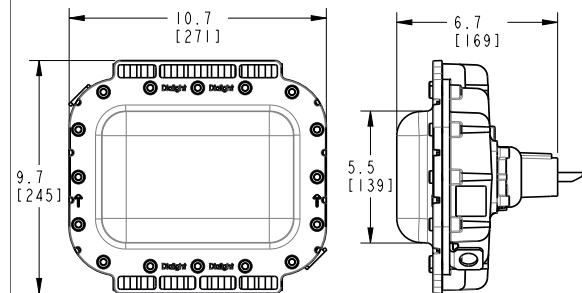
- Class I, Div. 2, Groups A, B, C, D
- Class I, Zone 2, Group IIC
- Class II, Div. 1, Groups E, F, G
- Zone 20 and 21
- Class II, Div. 2 Groups F, G
- Zone 22
- Class III, Div. 1 & 2

*ETL listed

Tempered Glass Lens



Polycarbonate Lens



Dimensions in inches [mm]

Additional dimensional drawings on pages 30-35

Mechanical Information:

Fixture weight: 10 lb (4.5 kg) - Polycarbonate lens
12 lb (5.5 kg) - Tempered glass lens
with stainless steel bracket: 13 lb (5.9 kg) - Polycarbonate lens
15 lb (6.8 kg) - Tempered glass lens

Shipping weight: Add 2 lb (0.91 kg) to weights above

Impact rating: IK10 - Polycarbonate lens
IK07 - Tempered glass lens

Cabling: 10' STOOW 1.02mm 18 AWG

Electrical Specifications:

Operating voltage: 100-277 VAC 50/60Hz, 120-250 VDC

Total system power consumption: See table

Operating temperature: -40°F to +149°F (-40°C to +65°C)

EMC: FCC Title 47, Subpart B, Section 15, Class A device
CISPR-15
RF Immunity 20V/m 80MHz-1GHz.

Transient protection: 6 kV, 2 Ohm line-line and line-ground

Harmonics: IEC 61000-3-2, Class C

THD: < 20%

Power factor: > 0.9

Construction:

Housing: Copper-free aluminum

Finish: Superior dual coat finish
- Sealed polyester topcoat
- Epoxy primer

Lens: Hard-coated polycarbonate
Tempered glass

Photometric Information:

CRI: 80

CCT: 5000K (cool white)
4000K (neutral white)

Optics: 360°
180° forward throw for 45° mounting
Wide for 0° mounting

All values typical unless otherwise stated (tolerance +/- 10%)

Temperature Ratings

Ambient Temperature Range T4A

Ambient Temperature Range T5

-40°F to +149°F (-40°C to +65°C)

-40°F to +113°F (-40°C to +45°C)

WARNING - INSTALLATION & SECONDARY RETENTION. Use of any Dialight products without proper installation (including secondary retention / netting) and periodic inspections could cause severe injury or death. Dialight recommends that all installations should use secondary retention / netting (appropriate to the installation environment) where applicable. It is the exclusive responsibility of the contractor, installer and/or end-user to: (a) determine the suitability of the product for its intended application; and, (b) ensure that the product is safely installed (with secondary retention / netting where appropriate) and in compliance with all applicable laws and regulations. To the extent permissible under applicable laws, Dialight disclaims all liability for personal injury and/or other damage resulting from any dislodgment or other dislocation of its products.

SafeSite® LED Area Light

100-277 VAC, 120-250 VDC with Universal Mounting Adapter

Universal Mounting Adapter



For use with HZXW01, HZXW45, HZXS45 or HZXFM brackets sold separately



HZXW01



HZXS45



HZXCV34



HZXW45

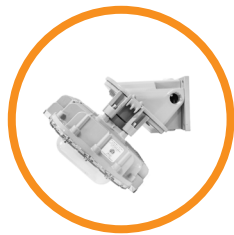


HZXFM

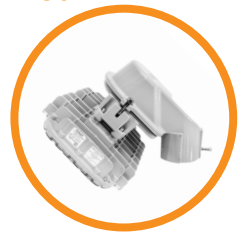
Wall & Ceiling Mount



45° Wall Mount



45° Stanchion Mount



Ceiling Mount



Conveyor Mount



Certifications & Ratings*

- 10 year warranty
- L70 > 150,000 hours @ 65°C
- UL 844, UL 1598/A
- CSA C22.2 No. 250
- CSA C22.2 No. 137-M81
- IP66 / 67 / 69
- NEMA 4X
- Factory sealed

ALD:

- Class I, Div. 2, Groups A, B, C, D
- Class I, Zone 2, Group IIC
- Class III, Div. 1 & 2

ALF:

- Class I, Div. 2, Groups A, B, C, D
- Class I, Zone 2, Group IIC
- Class II, Div. 1, Groups E, F, G
- Zone 20 and 21
- Class II, Div. 2 Groups F, G
- Zone 22
- Class III, Div. 1 & 2

*ETL listed

WARNING - INSTALLATION & SECONDARY RETENTION. Use of any Dialight products without proper installation (including secondary retention / netting) and periodic inspections could cause severe injury or death. Dialight recommends that all installations should use secondary retention / netting (appropriate to the installation environment) where applicable. It is the exclusive responsibility of the contractor, installer and/or end-user to: (a) determine the suitability of the product for its intended application; and, (b) ensure that the product is safely installed (with secondary retention / netting where appropriate) and in compliance with all applicable laws and regulations. To the extent permissible under applicable laws, Dialight disclaims all liability for personal injury and/or other damage resulting from any dislodgment or other dislocation of its products.

Mechanical Information:

Fixture weight:

| | |
|------------------------|--------------------------------------|
| UMA models: | 12 lb (5.5 kg) - Polycarbonate lens |
| | 15 lb (6.8 kg) - Tempered glass lens |
| Wall mount models: | 15 lb (6.8 kg) - Polycarbonate lens |
| | 18 lb (8.2 kg) - Tempered glass lens |
| 45° wall mount models: | 14 lb (6.4 kg) - Polycarbonate lens |
| | 17 lb (7.7 kg) - Tempered glass lens |
| 45° stanchion mount: | 15 lb (6.8 kg) - Polycarbonate lens |
| | 18 lb (8.2 kg) - Tempered glass lens |
| Ceiling mount: | 14 lb (6.4 kg) - Polycarbonate lens |
| | 7 lb (7.7 kg) - Tempered glass lens |

Shipping weight:

Add 2 lb (0.91 kg) to weights above

Cabling:

14" leads 1.02 mm 18 AWG

Impact rating:

IK10 - Polycarbonate lens
IK07 - Tempered glass lens

Electrical Specifications:

Operating voltage: 100-277 VAC 50/60Hz, 120-250 VDC

Operating temperature: -40°F to +149°F (-40°C to +65°C)

EMC:

FCC Title 47, Subpart B, Section 15,
Class A device
CISPR-15
RF Immunity 20V/m 80MHz-1GHz.

Transient protection:

6 kV, 2 Ohm line-line and line-ground

Harmonics:

IEC 61000-3-2, Class C

THD:

< 20%

Power factor:

> 0.9

Construction:

Housing:

Copper-free aluminum

Finish:

Superior dual coat finish
- Sealed polyester topcoat
- Epoxy primer

Lens:

Hard-coated polycarbonate
Tempered glass

Photometric Information:

CRI: 80

CCT: 5000K (cool white)
4000K (neutral white)

Optics:

360°
180° forward throw for 45° mounting
Wide for 0° mounting

All values typical unless otherwise stated (tolerance +/- 10%)

Temperature Ratings

Ambient Temperature Range T4A

Ambient Temperature Range T5

-40°F to +149°F (-40°C to +65°C)

-40°F to +113°F (-40°C to +45°C)

Additional dimensional drawings on pages 30-35

SafeSite® LED Area Light

100-277 VAC, 120-250 VDC



| Project Information | | |
|---------------------|--|-------|
| Part Number: | | |
| Project: | | |
| Fixture Type: | | Date: |

| Specifications |
|----------------|
| |
| |
| |
| |

Ordering Information

| | | | | | | | | | | | | | | | | | | | | | | | | |
|--------------|---|-------|---|---------------|---|------------|---|-----------|---|---------------|---|------------|---|----------|---|------------------|---|------------|---|----------------|--|----------|--|---------|
| AL | - | | - | | - | | - | 2 | - | | - | | - | | - | N | - | G | - | N | | | | |
| Product Code | | Cert. | | Lens Material | | Beam Dist. | | CCT & CRI | | Oper. Voltage | | Lumen Type | | Controls | | Mounting Options | | HW Access. | | Elect. Access. | | Coatings | | Battery |

Product Code

AL Area Light

Certification

- D UL 844 Class I Div. 2, Class I, Zone 2, Group IIC, CSA C22.2 No. 137- M81
- F UL 844 Class II Div. 1, 2, Class I Div. 2, Class III, Div. 1,2 CSA C22.2 No. 137- M81

Lens Material

- 5 Polycarbonate - Diffused
- 7 Tempered Glass - Clear

Beam Distribution

- A 180°
- B 360°
- W Wide

CCT & CRI

- C Cool White 5000K - 80 CRI
- N Neutral White 4000K - 80 CRI

Operating Voltage

- 2 100-277 VAC, 120-250 VDC

Lumen Type

- 3 3,100 Lumens
- 4 4,200 Lumens
- 6 5,700 Lumens
- 7 7,300 Lumens
- 9 9,000 Lumens

*For lumen output see page 21

Controls

- D Dimming (0-10V)
- N No Option

Mounting Options

- ☐ Retro-fit Adapter
- ☐ Universal Mounting Adapter (UMA)
- B Swivel Bracket, Locking 0° - 90° 316 Stainless Steel
- N 3/4" NPT Pendant
- A Appleton Mercmaster III
- C Crouse-Hinds - Champ
- G GE Filtr-Gard
- H Thomas & Betts Hazlux
- K Killark Certilite & Certilite V
- M Appleton Mercmaster II
- P Holophane Petrolux II and III
- F Ceiling Mount
- S 45° Stanchion Mount (S45)
- U UMA - Mounting Hub
- V 0° Wall Mount (W01)
- W 45° Wall Mount (W45)
- Y 34mm Conveyor Mount

Hardware Accessories

- N For Mounting Options - A, C, F, G, H, K, M, S, U, V, W, Y (individual wire leads are terminated in adapter housing)
- W 10 ft (3 meter) Power Cable for Mounting Options - B, N

Electrical Accessories

- N No Option

Coatings

- G Gray (RAL 7040)

Battery

- N No Option

Notes

- When ordering Beam Distribution W - Wide: Lumen Type = 7.
- When ordering Mounting Options "UMA" or "Retro-fit": Hardware Accessories = N.
- When ordering Mounting Option U - UMA Mounting Hub HZXW01, HZXW45, HZXS45, HZXF45 or HZXC45 are required. See page 28 for details.
- Lumen outputs shown are for Tempered Glass lens, 360° optic. For additional options please see page 21.

DISCLAIMER. All product information provided is, to the best of Dialight's knowledge, accurate as of the date of publication. When ordering, refer to www.dialight.com for current versions of: (a) relevant product documentation (including the relevant product data sheets); (b) Dialight terms and conditions of sale; and, (c) the relevant product warranty. To the extent that any contract is deemed formed between Dialight and the purchaser of Dialight products and/or an end-user, versions of documents available at www.dialight.com as at the date of sale shall be the versions incorporated therein. In the event of any discrepancy between this document or information provided at www.dialight.com, the latter shall prevail.

Ordering Information

**SafeSite® LED Area Light - 100-277 VAC,
120-250 VDC**



| 100-277 VAC, 120-250 VDC Model | | | | | | | | |
|---|------------------------|---------|------|-----|------------------------|-------------------|-----------------|-------------------------|
| Part Number | Initial Fixture Lumens | Wattage | lm/W | CCT | Lens | Beam Distribution | Controls Option | Mounting |
| ALD-7AC2-9NNW-NGN | 8,800 | 66 | 133 | CW | Tempered Glass | 180° | No Option | 3/4" NPT |
| ALD-5AC2-9NNW-NGN | 8,100 | 66 | 123 | CW | Polycarbonate Diffused | 180° | No Option | 3/4" NPT |
| ALD-7BC2-9NNW-NGN | 9,000 | 66 | 136 | CW | Tempered Glass | 360° | No Option | 3/4" NPT |
| ALD-5BC2-9NNW-NGN | 8,300 | 66 | 126 | CW | Polycarbonate Diffused | 360° | No Option | 3/4" NPT |
| ALD-7AC2-7NNW-NGN | 7,100 | 52 | 137 | CW | Tempered Glass | 180° | No Option | 3/4" NPT |
| ALD-5AC2-7NNW-NGN | 6,600 | 52 | 127 | CW | Polycarbonate Diffused | 180° | No Option | 3/4" NPT |
| ALD-7BC2-7NNW-NGN | 7,300 | 52 | 140 | CW | Tempered Glass | 360° | No Option | 3/4" NPT |
| ALD-5BC2-7NNW-NGN | 6,700 | 52 | 129 | CW | Polycarbonate Diffused | 360° | No Option | 3/4" NPT |
| ALD-7WC2-7NNW-NGN | 7,300 | 64 | 114 | CW | Tempered Glass | Wide | No Option | 3/4" NPT |
| ALD-5WC2-7NNW-NGN | 6,700 | 64 | 105 | CW | Polycarbonate Diffused | Wide | No Option | 3/4" NPT |
| ALD-7AC2-6NNW-NGN | 5,500 | 40 | 138 | CW | Tempered Glass | 180° | No Option | 3/4" NPT |
| ALD-5AC2-6NNW-NGN | 5,100 | 40 | 128 | CW | Polycarbonate Diffused | 180° | No Option | 3/4" NPT |
| ALD-7BC2-6NNW-NGN | 5,700 | 40 | 143 | CW | Tempered Glass | 360° | No Option | 3/4" NPT |
| ALD-5BC2-6NNW-NGN | 5,300 | 40 | 133 | CW | Polycarbonate Diffused | 360° | No Option | 3/4" NPT |
| ALD-7AC2-4NNW-NGN | 4,100 | 30 | 137 | CW | Tempered Glass | 180° | No Option | 3/4" NPT |
| ALD-5AC2-4NNW-NGN | 3,800 | 30 | 127 | CW | Polycarbonate Diffused | 180° | No Option | 3/4" NPT |
| ALD-7BC2-4NNW-NGN | 4,200 | 30 | 140 | CW | Tempered Glass | 360° | No Option | 3/4" NPT |
| ALD-5BC2-4NNW-NGN | 3,900 | 30 | 130 | CW | Polycarbonate Diffused | 360° | No Option | 3/4" NPT |
| ALD-7AC2-3NNW-NGN | 3,000 | 24 | 125 | CW | Tempered Glass | 180° | No Option | 3/4" NPT |
| ALD-5AC2-3NNW-NGN | 2,800 | 24 | 117 | CW | Polycarbonate Diffused | 180° | No Option | 3/4" NPT |
| ALD-7BC2-3NNW-NGN | 3,100 | 24 | 129 | CW | Tempered Glass | 360° | No Option | 3/4" NPT |
| ALD-5BC2-3NNW-NGN | 2,800 | 24 | 117 | CW | Polycarbonate Diffused | 360° | No Option | 3/4" NPT |
| 100-277 VAC, 120-250 VDC Model with Retro-fit Adapters - Crouse Hinds | | | | | | | | |
| ALD-7BC2-7NCN-NGN | 7,300 | 52 | 140 | CW | Tempered Glass | 360° | No Option | Retro-fit: Crouse Hinds |
| ALD-5BC2-7NCN-NGN | 6,700 | 52 | 129 | CW | Polycarbonate Diffused | 360° | No Option | Retro-fit: Crouse Hinds |
| ALD-7BC2-6NCN-NGN | 5,700 | 40 | 143 | CW | Tempered Glass | 360° | No Option | Retro-fit: Crouse Hinds |
| ALD-5BC2-6NCN-NGN | 5,300 | 40 | 133 | CW | Polycarbonate Diffused | 360° | No Option | Retro-fit: Crouse Hinds |
| 100-277 VAC, 120-250 VDC Model with Retro-fit Adapters - GE | | | | | | | | |
| ALD-7BC2-7NGN-NGN | 7,300 | 52 | 140 | CW | Tempered Glass | 360° | No Option | Retro-fit: GE |
| ALD-5BC2-7NGN-NGN | 6,700 | 52 | 129 | CW | Polycarbonate Diffused | 360° | No Option | Retro-fit: GE |
| ALD-7BC2-6NGN-NGN | 5,700 | 40 | 143 | CW | Tempered Glass | 360° | No Option | Retro-fit: GE |
| ALD-5BC2-6NGN-NGN | 5,300 | 40 | 133 | CW | Polycarbonate Diffused | 360° | No Option | Retro-fit: GE |

See ordering chart for additional options.

For products that require 0-10V dimming, replace the 9th character "N" with "D". ALU-7BC2-9NNW-NGN becomes ALU-7BC2-9DNW-NGN. 0-10V dimming products are supplied with a 5 conductor cable.

DISCLAIMER. All product information provided is, to the best of Dialight's knowledge, accurate as of the date of publication. When ordering, refer to www.dialight.com for current versions of: (a) relevant product documentation (including the relevant product data sheets); (b) Dialight terms and conditions of sale; and, (c) the relevant product warranty. To the extent that any contract is deemed formed between Dialight and the purchaser of Dialight products and/or an end-user, versions of documents available at www.dialight.com as at the date of sale shall be the versions incorporated therein. In the event of any discrepancy between this document or information provided at www.dialight.com, the latter shall prevail.

Ordering Information

SafeSite® LED Area Light - 100-277 VAC, 120-250 VDC

with Universal Mounting Adapter



100-277 VAC, 120-250 VDC with Universal Mounting Adapter

| Part Number | Initial Fixture Lumens | Wattage | lm/W | CCT | Lens | Beam Distribution | Controls Option | Mounting |
|-------------------|------------------------|---------|------|-----|------------------------|-------------------|-----------------|---------------|
| ALD-7AC2-7NUN-NGN | 7,100 | 52 | 137 | CW | Tempered Glass | 180° | No Option | UMA Hub |
| ALD-5AC2-7NUN-NGN | 6,600 | 52 | 127 | CW | Polycarbonate Diffused | 180° | No Option | UMA Hub |
| ALD-7BC2-7NUN-NGN | 7,300 | 52 | 140 | CW | Tempered Glass | 360° | No Option | UMA Hub |
| ALD-5BC2-7NUN-NGN | 6,700 | 52 | 129 | CW | Polycarbonate Diffused | 360° | No Option | UMA Hub |
| ALD-7AC2-6NUN-NGN | 5,500 | 40 | 138 | CW | Tempered Glass | 180° | No Option | UMA Hub |
| ALD-5AC2-6NUN-NGN | 5,100 | 40 | 128 | CW | Polycarbonate Diffused | 180° | No Option | UMA Hub |
| ALD-7BC2-6NUN-NGN | 5,700 | 40 | 143 | CW | Tempered Glass | 360° | No Option | UMA Hub |
| ALD-5BC2-6NUN-NGN | 5,300 | 40 | 133 | CW | Polycarbonate Diffused | 360° | No Option | UMA Hub |
| ALD-7AC2-7NSN-NGN | 7,100 | 52 | 137 | CW | Tempered Glass | 180° | No Option | 45° Stanchion |
| ALD-5AC2-7NSN-NGN | 6,600 | 52 | 127 | CW | Polycarbonate Diffused | 180° | No Option | 45° Stanchion |
| ALD-7AC2-6NSN-NGN | 5,500 | 40 | 138 | CW | Tempered Glass | 180° | No Option | 45° Stanchion |
| ALD-5AC2-6NSN-NGN | 5,100 | 40 | 128 | CW | Polycarbonate Diffused | 180° | No Option | 45° Stanchion |
| ALD-7AC2-4NSN-NGN | 4,100 | 30 | 137 | CW | Tempered Glass | 180° | No Option | 45° Stanchion |
| ALD-5AC2-4NSN-NGN | 3,800 | 30 | 127 | CW | Polycarbonate Diffused | 180° | No Option | 45° Stanchion |
| ALD-7AC2-7NWN-NGN | 7,100 | 52 | 137 | CW | Tempered Glass | 180° | No Option | 45° Wall |
| ALD-5AC2-7NWN-NGN | 6,600 | 52 | 127 | CW | Polycarbonate Diffused | 180° | No Option | 45° Wall |
| ALD-7AC2-6NWN-NGN | 5,500 | 40 | 138 | CW | Tempered Glass | 180° | No Option | 45° Wall |
| ALD-5AC2-6NWN-NGN | 5,100 | 40 | 128 | CW | Polycarbonate Diffused | 180° | No Option | 45° Wall |
| ALD-7AC2-4NWN-NGN | 4,100 | 30 | 137 | CW | Tempered Glass | 180° | No Option | 45° Wall |
| ALD-5AC2-4NWN-NGN | 3,800 | 30 | 127 | CW | Polycarbonate Diffused | 180° | No Option | 45° Wall |
| ALD-7AC2-7NVN-NGN | 7,100 | 52 | 137 | CW | Tempered Glass | 180° | No Option | 0° Wall |
| ALD-5AC2-7NVN-NGN | 6,600 | 52 | 127 | CW | Polycarbonate Diffused | 180° | No Option | 0° Wall |
| ALD-7AC2-6NVN-NGN | 5,500 | 40 | 138 | CW | Tempered Glass | 180° | No Option | 0° Wall |
| ALD-5AC2-6NVN-NGN | 5,100 | 40 | 128 | CW | Polycarbonate Diffused | 180° | No Option | 0° Wall |
| ALD-7AC2-4NVN-NGN | 4,100 | 30 | 137 | CW | Tempered Glass | 180° | No Option | 0° Wall |
| ALD-5AC2-4NVN-NGN | 3,800 | 30 | 127 | CW | Polycarbonate Diffused | 180° | No Option | 0° Wall |
| ALD-7BC2-7NFN-NGN | 7,100 | 52 | 137 | CW | Tempered Glass | 360° | No Option | Ceiling Mount |
| ALD-5BC2-7NFN-NGN | 6,600 | 52 | 127 | CW | Polycarbonate Diffused | 360° | No Option | Ceiling Mount |
| ALD-7BC2-6NFN-NGN | 5,500 | 40 | 138 | CW | Tempered Glass | 360° | No Option | Ceiling Mount |
| ALD-5BC2-6NFN-NGN | 5,100 | 40 | 128 | CW | Polycarbonate Diffused | 360° | No Option | Ceiling Mount |
| ALD-7BC2-4NFN-NGN | 4,100 | 30 | 137 | CW | Tempered Glass | 360° | No Option | Ceiling Mount |
| ALD-5BC2-4NFN-NGN | 3,800 | 30 | 127 | CW | Polycarbonate Diffused | 360° | No Option | Ceiling Mount |

See ordering chart for additional options.

For products that require 0-10V dimming, replace the 9th character "N" with "D". ALU-7BC2-9NNW-NGN becomes ALU-7BC2-9DNW-NGN.

0-10V dimming products are supplied with a 5 conductor cable.

DISCLAIMER. All product information provided is, to the best of Dialight's knowledge, accurate as of the date of publication. When ordering, refer to www.dialight.com for current versions of: (a) relevant product documentation (including the relevant product data sheets); (b) Dialight terms and conditions of sale; and, (c) the relevant product warranty. To the extent that any contract is deemed formed between Dialight and the purchaser of Dialight products and/or an end-user, versions of documents available at www.dialight.com as at the date of sale shall be the versions incorporated therein. In the event of any discrepancy between this document or information provided at www.dialight.com, the latter shall prevail.

SafeSite® LED Area Light

Class I, Div. 1



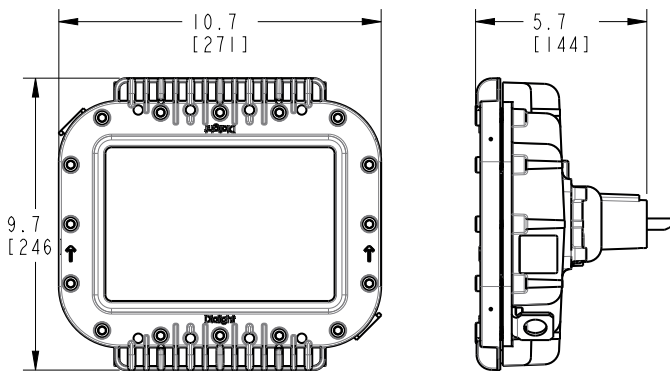
Certifications & Ratings*

- 10 year warranty
- L70 > 150,000 hours @ 65°C
- UL 844, UL 1598/A
- CSA C22.2 No. 250
- CSA C22.2 No. 137-M81
- IP66 / 67 / 69
- NEMA 4X
- Factory sealed
- Class I, Division 1, Group B-D Locations
- Class I, Zone 1, Group IIB + Hydrogen
- Class II, Division 1, Groups E-G Locations
- Zone 21, Zone 22

OR

- Class I, Division 1, Groups C-D Locations
- Class I, Zone 1, Group IIB
- Class II, Division 1, Groups E-G Locations
- Zone 21, Zone 22

*ETL listed



Dimensions in inches [mm]

Additional dimensional drawings on pages 30-35

Mechanical Information:

| | |
|-------------------------|-------------------------------------|
| Fixture weight: | 15 lb (6.8 kg) |
| Shipping weight: | Add 2 lb (0.91 kg) to weights above |
| Cabling: | 10' (3.5 m) 5 conductor SOOW |
| Impact rating: | IK07 - Tempered glass lens |
| Cabling: | 10' ST00W 1.02mm 18 AWG |

Electrical Specifications:

| | |
|--|--|
| Operating voltage: | 100-277 VAC 50/60Hz, 120-250 VDC |
| Total system power consumption: | See table |
| Operating temperature: | -40°F to +149°F (-40°C to +65°C) |
| EMC: | FCC Title 47, Subpart B, Section 15, Class A device CISPR-15 RF Immunity 20V/m 80MHz-1GHz. |
| Transient protection: | 6 kV, 2 Ohm line-line and line-ground |
| Harmonics: | IEC 61000-3-2, Class C |
| THD: | < 20% |
| Power factor: | > 0.9 |

Construction:

| | |
|-----------------|---|
| Housing: | Copper-free aluminum |
| Finish: | Superior dual coat finish - Sealed polyester topcoat - Epoxy primer |
| Lens: | Tempered glass |

Photometric Information:

| | |
|----------------|---|
| CRI: | 80 |
| CCT: | 5000K (cool white) 4000K (neutral white) |
| Optics: | 360° 180° forward throw for 45° mounting Wide for 0° mounting |

All values typical unless otherwise stated (tolerance +/- 10%)

Temperature Ratings

| Ambient Temperature Range T4A | Ambient Temperature Range T5 |
|----------------------------------|----------------------------------|
| -40°F to +149°F (-40°C to +65°C) | -40°F to +113°F (-40°C to +45°C) |

WARNING - INSTALLATION & SECONDARY RETENTION. Use of any Dialight products without proper installation (including secondary retention / netting) and periodic inspections could cause severe injury or death. Dialight recommends that all installations should use secondary retention / netting (appropriate to the installation environment) where applicable. It is the exclusive responsibility of the contractor, installer and/or end-user to: (a) determine the suitability of the product for its intended application; and, (b) ensure that the product is safely installed (with secondary retention / netting where appropriate) and in compliance with all applicable laws and regulations. To the extent permissible under applicable laws, Dialight disclaims all liability for personal injury and/or other damage resulting from any dislodgment or other dislocation of its products.

SafeSite® LED Area Light

Class I, Div. 1



| Project Information | | | Specifications | |
|---------------------|--|-------|----------------|--|
| Part Number: | | | | |
| Project: | | | | |
| Fixture Type: | | Date: | | |

Ordering Information

| | | | | | | | | | | | | | | | | | | | | | | | | |
|--------------|---|-------|---|---------------|---|------------|---|-----------|---|---------------|---|------------|---|----------|---|------------------|---|------------|---|----------------|---|----------|--|---------|
| AL | - | C | - | 7 | - | | - | | - | 2 | - | | - | | - | W | - | N | - | G | - | N | | |
| Product Code | | Cert. | | Lens Material | | Beam Dist. | | CCT & CRI | | Oper. Voltage | | Lumen Type | | Controls | | Mounting Options | | HW Access. | | Elect. Access. | | Coatings | | Battery |

Product Code

AL Area Light

Certification

C Class I, Division 1, Group B-D Locations
Class I, Zone 1, Group IIB + Hydrogen
Class II, Division 1, Groups E-G Locations
Zone 21, Zone 22
OR
Class I, Division 1, Groups C-D Locations
Class I, Zone 1, Group IIB
Class II, Division 1, Groups E-G Locations
Zone 21, Zone 22

Lens Material

7 Tempered Glass - Clear

Beam Distribution

A 180°

B 360°

W Wide

CCT & CRI

C Cool White 5000K - 80 CRI

N Neutral White 4000K - 80 CRI

Operating Voltage

2 100-277 VAC, 120-250 VDC

Lumen Type

3 3,001 - 4,000 Lumens

4 4,001 - 5,000 Lumens

6 5,001 - 6,000 Lumens

7 6,001 - 7,000 Lumens

9 8,001 - 9,000 Lumens

Controls

D Dimming (0-10V)

N No Option

Mounting Options

B Swivel Bracket, Locking 0° - 90°
316 Stainless Steel

N 3/4" NPT

Hardware Accessories

W 10 ft (3 meter) Power Cable

Electrical Accessories

N No Option

Coatings

G Gray (RAL 7040)

Battery

N No Option

Notes

1) When ordering Beam Distribution W - Wide: Lumen Type = 7.

2) For lumen output see page 21.

DISCLAIMER. All product information provided is, to the best of Dialight's knowledge, accurate as of the date of publication. When ordering, refer to www.dialight.com for current versions of: (a) relevant product documentation (including the relevant product data sheets); (b) Dialight terms and conditions of sale; and, (c) the relevant product warranty. To the extent that any contract is deemed formed between Dialight and the purchaser of Dialight products and/or an end-user, versions of documents available at www.dialight.com as at the date of sale shall be the versions incorporated therein. In the event of any discrepancy between this document or information provided at www.dialight.com, the latter shall prevail.

Ordering Information

SafeSite® LED Area Light - Class I, Div. 1



| Class I, Div. 1 Model | | | | | | | | |
|---|------------------------|---------|------|-----|----------------|-------------------|-----------------|------------------------------------|
| Part Number | Initial Fixture Lumens | Wattage | lm/W | CCT | Lens | Beam Distribution | Controls Option | Mounting |
| ALC-7BC2-9NNW-NGN | 8,600 | 66 | 130 | CW | Tempered Glass | 360 | No Option | 3/4" NPT |
| ALC-7AC2-9NNW-NGN | 8,400 | 66 | 127 | CW | Tempered Glass | 180 | No Option | 3/4" NPT |
| ALC-7BC2-7NNW-NGN | 7,000 | 52 | 135 | CW | Tempered Glass | 360 | No Option | 3/4" NPT |
| ALC-7AC2-7NNW-NGN | 6,800 | 52 | 131 | CW | Tempered Glass | 180 | No Option | 3/4" NPT |
| ALC-7BC2-6NNW-NGN | 5,400 | 40 | 135 | CW | Tempered Glass | 360 | No Option | 3/4" NPT |
| ALC-7AC2-6NNW-NGN | 5,300 | 40 | 133 | CW | Tempered Glass | 180 | No Option | 3/4" NPT |
| ALC-7BC2-4NNW-NGN | 4,000 | 30 | 133 | CW | Tempered Glass | 360 | No Option | 3/4" NPT |
| ALC-7AC2-4NNW-NGN | 3,900 | 30 | 130 | CW | Tempered Glass | 180 | No Option | 3/4" NPT |
| ALC-7BC2-3NNW-NGN | 2,900 | 24 | 121 | CW | Tempered Glass | 360 | No Option | 3/4" NPT |
| ALC-7AC2-3NNW-NGN | 2,900 | 24 | 121 | CW | Tempered Glass | 360 | No Option | 3/4" NPT |
| 100-277 VAC, 120-250 VDC Model with Retro-fit Adapters - Crouse Hinds | | | | | | | | |
| ALC-7BC2-9NBW-NGN | 8,600 | 66 | 130 | CW | Tempered Glass | 360 | No Option | Stainless Steel Adjustable Bracket |
| ALC-7AC2-9NBW-NGN | 8,400 | 66 | 127 | CW | Tempered Glass | 180 | No Option | Stainless Steel Adjustable Bracket |
| ALC-7BC2-7NBW-NGN | 7,000 | 52 | 135 | CW | Tempered Glass | 360 | No Option | Stainless Steel Adjustable Bracket |
| ALC-7AC2-7NBW-NGN | 6,800 | 52 | 131 | CW | Tempered Glass | 180 | No Option | Stainless Steel Adjustable Bracket |
| ALC-7BC2-6NBW-NGN | 5,400 | 40 | 135 | CW | Tempered Glass | 360 | No Option | Stainless Steel Adjustable Bracket |
| ALC-7AC2-6NBW-NGN | 5,300 | 40 | 133 | CW | Tempered Glass | 180 | No Option | Stainless Steel Adjustable Bracket |
| ALC-7BC2-4NBW-NGN | 4,000 | 30 | 133 | CW | Tempered Glass | 360 | No Option | Stainless Steel Adjustable Bracket |
| ALC-7AC2-4NBW-NGN | 3,900 | 30 | 130 | CW | Tempered Glass | 180 | No Option | Stainless Steel Adjustable Bracket |
| ALC-7BC2-3NBW-NGN | 2,900 | 24 | 121 | CW | Tempered Glass | 360 | No Option | Stainless Steel Adjustable Bracket |
| ALC-7AC2-3NBW-NGN | 2,900 | 24 | 121 | CW | Tempered Glass | 360 | No Option | Stainless Steel Adjustable Bracket |

See ordering chart for additional options.

DISCLAIMER. All product information provided is, to the best of Dialight's knowledge, accurate as of the date of publication. When ordering, refer to www.dialight.com for current versions of: (a) relevant product documentation (including the relevant product data sheets); (b) Dialight terms and conditions of sale; and, (c) the relevant product warranty. To the extent that any contract is deemed formed between Dialight and the purchaser of Dialight products and/or an end-user, versions of documents available at www.dialight.com as at the date of sale shall be the versions incorporated therein. In the event of any discrepancy between this document or information provided at www.dialight.com, the latter shall prevail.

SafeSite® LED Area Light

347/480 VAC



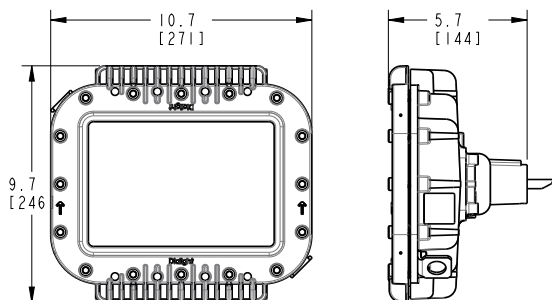
Certifications & Ratings*

- 5 year warranty
- UL 1598/A, UL 844
- L70 > 100,000h @ 25°C
- Class I, Div. 1, Groups B, C, D
- Class I, Div. 2, Groups A, B, C, D
- Class II, Div. 1, Groups E, F, G

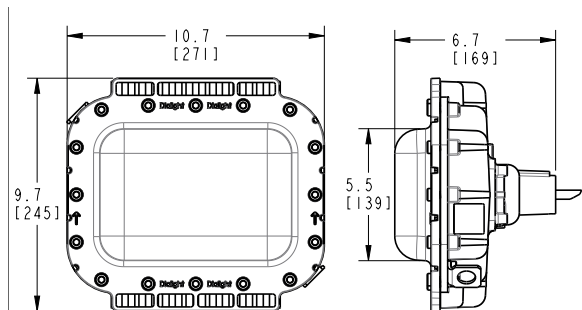
*ETL listed

- Class III, Div. 1 & 2
- CSA C22.2 No. 137
- CSA C22.2 No. 250
- IP66 / 67
- NEMA 4X

Tempered Glass Lens



Polycarbonate Lens



Dimensions in inches [mm]

Additional dimensional drawings on pages 30-35

Mechanical Information:

| | |
|-------------------------------|---|
| Fixture weight: | 10 lb (4.5 kg) - Polycarbonate lens 12 lb (5.5 kg) - Tempered glass lens |
| Wall mount models: | 15 lb (6.8 kg) - Polycarbonate lens 18 lb (8.2 kg) - Tempered glass lens |
| 45° wall mount models: | 14 lb (6.4 kg) - Polycarbonate lens 17 lb (7.7 kg) - Tempered glass lens |
| 45° stanchion mount: | 15 lb (6.8 kg) - Polycarbonate lens 18 lb (8.2 kg) - Tempered glass lens |
| Class I, Div. 1 model: | 15 lb (6.8 kg) |
| Shipping weight: | Add 2 lb (0.91 kg) to weights above |
| Impact rating: | IK10 - Polycarbonate lens IK07 - Tempered glass lens |
| Cabling: | 10' ST00W 1.02mm 18 AWG |

Electrical Specifications:

| | |
|--|---|
| Operating voltage: | 347/480 VAC |
| Total system power consumption: | See table |
| Operating temperature: | -40°F to +149°F (-40°C to +65°C) |
| EMC: | FCC Title 47, Subpart B, Section 15, Class A device RF Immunity 20V/m 80MHz-1GHz. |
| Transient protection: | 6 kV, 2 Ohm line-line and line-ground |
| Harmonics: | IEC 61000-3-2, Class C |
| THD: | < 20% |
| Power factor: | > 0.9 |

Construction:

| | |
|-----------------|---|
| Housing: | Copper-free aluminum |
| Finish: | Superior dual coat finish - Sealed polyester topcoat - Epoxy primer |
| Lens: | Tempered glass |

Photometric Information:

| | |
|----------------|---|
| CRI: | 75 |
| CCT: | 5000K (cool white) |
| Optics: | 360° 180° forward throw for 45° mounting |

All values typical unless otherwise stated (tolerance +/- 10%)

Temperature Ratings

| Ambient Temperature Range T4A | Ambient Temperature Range T5 |
|----------------------------------|----------------------------------|
| -40°F to +149°F (-40°C to +65°C) | -40°F to +113°F (-40°C to +45°C) |

WARNING - INSTALLATION & SECONDARY RETENTION. Use of any Dialight products without proper installation (including secondary retention / netting) and periodic inspections could cause severe injury or death. Dialight recommends that all installations should use secondary retention / netting (appropriate to the installation environment) where applicable. It is the exclusive responsibility of the contractor, installer and/or end-user to: (a) determine the suitability of the product for its intended application; and, (b) ensure that the product is safely installed (with secondary retention / netting where appropriate) and in compliance with all applicable laws and regulations. To the extent permissible under applicable laws, Dialight disclaims all liability for personal injury and/or other damage resulting from any dislodgment or other dislocation of its products.

SafeSite® LED Area Light

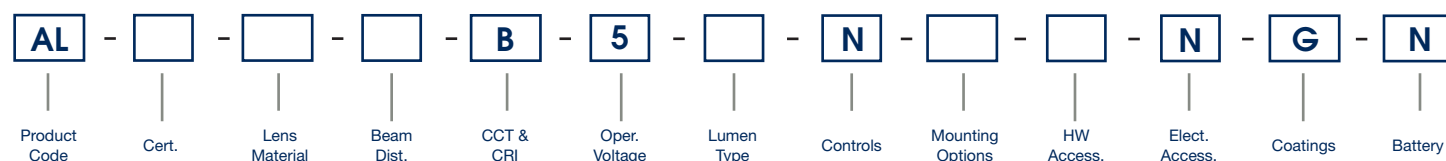
347/480 VAC



| Project Information | | |
|---------------------|--|-------|
| Part Number: | | |
| Project: | | |
| Fixture Type: | | Date: |

| Specifications |
|----------------|
| |
| |
| |
| |

Ordering Information



| | | | |
|--|--|---|---|
| Product Code AL Area Light | Beam Distribution A 180° B 360° | Mounting Options <div>Retro-fit Adapter</div> <div>Universal Mounting Adapter (UMA)</div> B Swivel Bracket, Locking 0° - 90° 316 Stainless Steel N 3/4" NPT Pendant A Appleton Mercmaster III C Crouse-Hinds - Champ G GE Filtr-Gard H Thomas & Betts Hazlux K Killark Certilite & Certilite V M Appleton Mercmaster II P Holophane Petrolux II and III F Ceiling Mount S 45° Stanchion Mount (S45) U UMA - Mounting Hub V 0° Wall Mount (W01) W 45° Wall Mount (W45) Y 34mm Conveyor Mount | Hardware Accessories N For Mounting Options - A, C, F, G, H, K, M, S, U, V, W, Y (individual wire leads are terminated in adapter housing) W 10 ft (3 meter) Power Cable Mounting Options - B, N |
| Certification C Class I Div. 1 Groups C, D Class II Div. 1 Groups E, F, G CSA 22.2 No. 137 D UL 844 Class I Div. 2 CSA 22.2 No. 137 - M81 F UL 844 Class II Div. 1, 2 Class I Div. 2 CSA 22.2 No. 137 - M81 P Class I Div. 1 Groups B, C, D Class II Div. 1 Groups E, F, G CSA 22.2 No. 137 | CCT & CRI B Cool White 5000K - 70 CRI | | Electrical Accessories N No Option |
| Lens Material 5 Polycarbonate - Diffused 7 Tempered Glass - Clear | Operating Voltage 5 347/480 VAC Lumen Type 2 2,200 Lumens 4 4,000 Lumens 5 5,000 Lumens 6 6,000 Lumens 7 7,200 Lumens <small>*For lumen output see page 22</small> | | Coatings G Gray (RAL 7040) |
| | Controls N No Options | | Battery N No Option |

| Notes |
|--|
| 1) When using "UMA" or "Retro-fit" mounting options, Hardware Accessories = N. |
| 2) When ordering Certification option C or P: - Lens Material = 7 - Glass - Clear - Mounting Option = N - 3/4" NPT or B - Swivel Bracket, Locking 0° - 90° 316 Stainless Steel - Hardware Accessories = W 10 ft (3 meter) Power Cable for |
| 3) Lumen outputs shown are for Tempered Glass lens, 360° optic. For additional options please see page 22. |

DISCLAIMER. All product information provided is, to the best of Dialight's knowledge, accurate as of the date of publication. When ordering, refer to www.dialight.com for current versions of: (a) relevant product documentation (including the relevant product data sheets); (b) Dialight terms and conditions of sale; and, (c) the relevant product warranty. To the extent that any contract is deemed formed between Dialight and the purchaser of Dialight products and/or an end-user, versions of documents available at www.dialight.com as at the date of sale shall be the versions incorporated therein. In the event of any discrepancy between this document or information provided at www.dialight.com, the latter shall prevail.

Ordering Information

SafeSite® LED Area Light - 347/480 VAC



| 347/480 VAC Model | | | | | | | | |
|---|------------------------|---------|------|-----|------------------------|-------------------|-----------------|-------------------------|
| Part Number | Initial Fixture Lumens | Wattage | lm/W | CCT | Lens | Beam Distribution | Controls Option | Mounting |
| ALD-7BB5-7NNW-NGN | 7,200 | 68 | 106 | CW | Tempered Glass | 360° | No Option | 3/4" NPT |
| ALD-5BB5-7NNW-NGN | 7,000 | 68 | 103 | CW | Polycarbonate Diffused | 360° | No Option | 3/4" NPT |
| ALD-7AB5-7NNW-NGN | 7,200 | 68 | 106 | CW | Tempered Glass | 180° | No Option | 3/4" NPT |
| ALD-5AB5-7NNW-NGN | 7,000 | 68 | 103 | CW | Polycarbonate Diffused | 180° | No Option | 3/4" NPT |
| ALD-7BB5-6NNW-NGN | 6,000 | 58 | 103 | CW | Tempered Glass | 360° | No Option | 3/4" NPT |
| ALD-5BB5-6NNW-NGN | 5,700 | 58 | 98 | CW | Polycarbonate Diffused | 360° | No Option | 3/4" NPT |
| ALD-7AB5-6NNW-NGN | 6,000 | 58 | 103 | CW | Tempered Glass | 180° | No Option | 3/4" NPT |
| ALD-5AB5-6NNW-NGN | 6,000 | 58 | 103 | CW | Polycarbonate Diffused | 180° | No Option | 3/4" NPT |
| ALD-7BB5-4NNW-NGN | 4,000 | 38 | 105 | CW | Tempered Glass | 360° | No Option | 3/4" NPT |
| ALD-5BB5-4NNW-NGN | 3,800 | 38 | 100 | CW | Polycarbonate Diffused | 360° | No Option | 3/4" NPT |
| ALD-7AB5-4NNW-NGN | 4,000 | 38 | 105 | CW | Tempered Glass | 180° | No Option | 3/4" NPT |
| ALD-5AB5-4NNW-NGN | 3,800 | 38 | 100 | CW | Polycarbonate Diffused | 180° | No Option | 3/4" NPT |
| 100-277 VAC, 120-250 VDC Model with Retro-fit Adapters - Crouse Hinds | | | | | | | | |
| ALD-7BB5-6NCN-NGN | 6,000 | 58 | 103 | CW | Tempered Glass | 360° | No Option | Retro-fit: Crouse Hinds |
| ALD-5BB5-6NCN-NGN | 6,000 | 58 | 103 | CW | Polycarbonate Diffused | 360° | No Option | Retro-fit: Crouse Hinds |
| ALD-7AB5-6NCN-NGN | 6,000 | 58 | 103 | CW | Tempered Glass | 180° | No Option | Retro-fit: Crouse Hinds |
| ALD-5AB5-6NCN-NGN | 6,000 | 58 | 103 | CW | Polycarbonate Diffused | 180° | No Option | Retro-fit: Crouse Hinds |

See ordering chart for additional options.

Lumen Tables

Vigilant® & SafeSite® LED Area Light - 100-277 VAC, 120-250 VDC

| 100-277 VAC, 120-250 VDC | | | | | | | | | |
|--------------------------|-------------------|----------------------|---------|--------------------|------------------|--------------------|------------------|--------------------|------------------|
| Output Family | Beam Distribution | Lens | Wattage | Lumens 5000 CCT | 5000 CCT lm/W | Lumens 4000 CCT | 4000 CCT lm/W | Lumens 2700 CCT | 2700 CCT lm/W |
| 9,000 | 360° | Tempered Glass | 66 | 9000 | 136 | 8800 | 134 | 8200 | 124 |
| | | Class I, Div 1 Glass | | 8600 | 131 | 8400 | 128 | 7900 | 120 |
| | | Polycarbonate | | 8300 | 127 | 8100 | 123 | 7600 | 115 |
| | 180° | Tempered Glass | | 8800 | 134 | 8600 | 131 | 8000 | 121 |
| | | Class I, Div 1 Glass | | 8400 | 128 | 8200 | 125 | 7700 | 117 |
| | | Polycarbonate | | 8100 | 124 | 7900 | 120 | 7400 | 112 |
| 7,300 | 360° | Tempered Glass | 52 | 7300 | 140 | 7100 | 138 | 6700 | 129 |
| | | Class I, Div 1 Glass | | 7000 | 135 | 6800 | 132 | 6400 | 123 |
| | | Polycarbonate | | 6700 | 131 | 6500 | 126 | 6100 | 117 |
| | 180° | Tempered Glass | | 7100 | 138 | 6900 | 134 | 6500 | 125 |
| | | Class I, Div 1 Glass | | 6800 | 132 | 6600 | 128 | 6200 | 119 |
| | | Polycarbonate | | 6600 | 128 | 6400 | 124 | 6000 | 115 |
| | Wide | Tempered Glass | 64 | 7300 | 114 | 7100 | 112 | 6700 | 105 |
| | | Class I, Div 1 Glass | | 7000 | 110 | 6800 | 107 | 6400 | 100 |
| | | Polycarbonate | | 6700 | 106 | 6500 | 103 | 6100 | 95 |
| 5,700 | 360° | Tempered Glass | 40 | 5700 | 143 | 5500 | 140 | 5200 | 130 |
| | | Class I, Div 1 Glass | | 5400 | 137 | 5200 | 132 | 4900 | 123 |
| | | Polycarbonate | | 5300 | 133 | 5100 | 130 | 4800 | 120 |
| | 180° | Tempered Glass | | 5500 | 140 | 5300 | 135 | 5000 | 125 |
| | | Class I, Div 1 Glass | | 5300 | 134 | 5100 | 130 | 4800 | 120 |
| | | Polycarbonate | | 5100 | 130 | 4900 | 125 | 4600 | 115 |
| 4,200 | 360° | Tempered Glass | 30 | 4200 | 140 | 4100 | 137 | 3800 | 127 |
| | | Class I, Div 1 Glass | | 4000 | 134 | 3900 | 131 | 3600 | 120 |
| | | Polycarbonate | | 3900 | 130 | 3800 | 127 | 3900 | 130 |
| | 180° | Tempered Glass | | 4100 | 137 | 4000 | 134 | 4100 | 137 |
| | | Class I, Div 1 Glass | | 3900 | 132 | 3800 | 127 | 3900 | 130 |
| | | Polycarbonate | | 3800 | 127 | 3700 | 124 | 3400 | 113 |
| 3,100 | 360° | Tempered Glass | 24 | 3100 | 129 | 3000 | 127 | 2800 | 117 |
| | | Class I, Div 1 Glass | | 2900 | 124 | 2900 | 121 | 2600 | 108 |
| | | Polycarbonate | | 2800 | 120 | 2700 | 114 | 2500 | 104 |
| | 180° | Tempered Glass | | 3000 | 127 | 2900 | 123 | 2700 | 113 |
| | | Class I, Div 1 Glass | | 2900 | 121 | 2800 | 118 | 2600 | 108 |
| | | Polycarbonate | | 2800 | 118 | 2700 | 114 | 2500 | 104 |

All values typical unless otherwise stated (tolerance +/- 10%)
For lighting layouts, please find IES files at www.dialight.com

Lumen Tables

DuroSite® & SafeSite® LED Area Light - 347/480 VAC

| 347/480 VAC | | | | | | | |
|---------------|-------------------|----------------------|---------|--------------------|------------------|--------------------|------------------|
| Output Family | Beam Distribution | Lens | Wattage | Lumens 5000 CCT | 5000 CCT lm/W | Lumens 4000 CCT | 4000 CCT lm/W |
| 7,250 | 360° | Tempered Glass | 68 | 7200 | 107 | 7100 | 104 |
| | | Class I, Div 1 Glass | | 6900 | 102 | 6800 | 100 |
| | | Polycarbonate | | 6900 | 102 | 6800 | 100 |
| | 180° | Tempered Glass | | 7200 | 107 | 7100 | 104 |
| | | Class I, Div 1 Glass | | 6900 | 102 | 6800 | 100 |
| | | Polycarbonate | | 6900 | 102 | 6800 | 100 |
| 6,000 | 360° | Tempered Glass | 58 | 6000 | 103 | 5800 | 101 |
| | | Class I, Div 1 Glass | | 5700 | 99 | 5600 | 97 |
| | | Polycarbonate | | 5700 | 99 | 5600 | 97 |
| | 180° | Tempered Glass | | 6000 | 103 | 5800 | 101 |
| | | Class I, Div 1 Glass | | 5700 | 99 | 5600 | 97 |
| | | Polycarbonate | | 5700 | 99 | 5600 | 97 |
| 5,000 | 360° | Tempered Glass | 47 | 5000 | 106 | 4900 | 104 |
| | | Class I, Div 1 Glass | | 4800 | 102 | 4700 | 100 |
| | | Polycarbonate | | 4800 | 102 | 4700 | 100 |
| | 180° | Tempered Glass | | 5000 | 106 | 4900 | 104 |
| | | Class I, Div 1 Glass | | 4800 | 106 | 4700 | 100 |
| | | Polycarbonate | | 4800 | 102 | 4700 | 100 |
| 4,100 | Wide | Polycarbonate | 55 | 4100 | 75 | 4000 | 73 |
| 4,000 | 360° | Tempered Glass | 38 | 4000 | 105 | 3900 | 103 |
| | | Class I, Div 1 Glass | | 3800 | 101 | 3700 | 99 |
| | | Polycarbonate | | 3800 | 101 | 3700 | 99 |
| | 180° | Tempered Glass | | 4000 | 105 | 3900 | 103 |
| | | Class I, Div 1 Glass | | 3800 | 101 | 3700 | 99 |
| | | Polycarbonate | | 3800 | 101 | 3700 | 99 |
| 2,200 | 360° | Tempered Glass | 21 | 2200 | 105 | 2200 | 105 |
| | | Class I, Div 1 Glass | | 2200 | 105 | 2200 | 105 |
| | | Polycarbonate | | 2200 | 105 | 2200 | 105 |
| | 180° | Tempered Glass | | 2200 | 105 | 2200 | 105 |
| | | Class I, Div 1 Glass | | 2200 | 105 | 2200 | 105 |
| | | Polycarbonate | | 2200 | 105 | 2200 | 105 |

All values typical unless otherwise stated (tolerance +/- 10%)
For lighting layouts, please find IES files at www.dialight.com

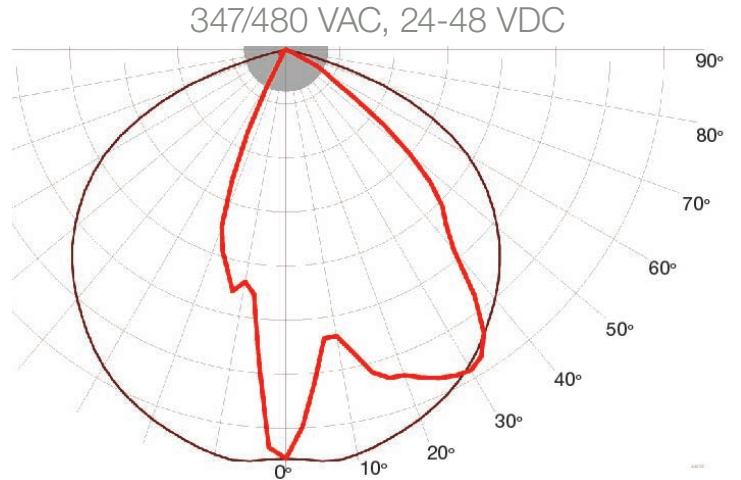
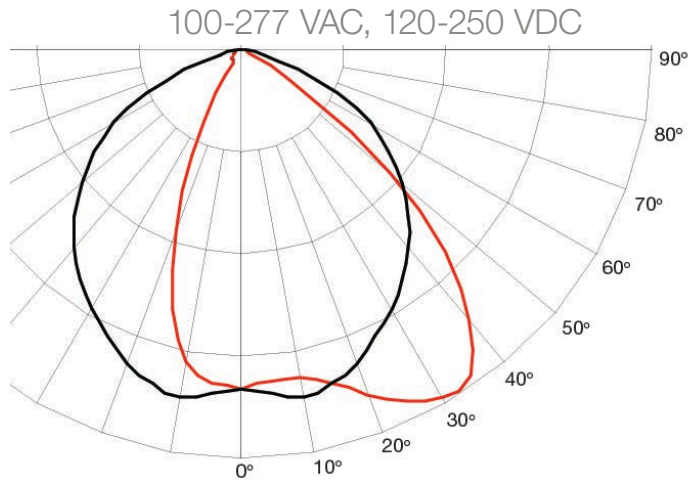
Measured LED temperature for an ambient temperature range of 25°C to 65°C and calculated lumen maintenance using TM-21 calculator and LED LM80 data.
Data in the above tables relates to 100 – 277 VAC, 120-250 VDC product. For information about 347/480 VAC, 24-48 VDC, Battery back-up products please visit www.dialight.com.

DISCLAIMER. All product information provided is, to the best of Dialight's knowledge, accurate as of the date of publication. When ordering, refer to www.dialight.com for current versions of: (a) relevant product documentation (including the relevant product data sheets); (b) Dialight terms and conditions of sale; and, (c) the relevant product warranty. To the extent that any contract is deemed formed between Dialight and the purchaser of Dialight products and/or an end-user, versions of documents available at www.dialight.com as at the date of sale shall be the versions incorporated therein. In the event of any discrepancy between this document or information provided at www.dialight.com, the latter shall prevail.

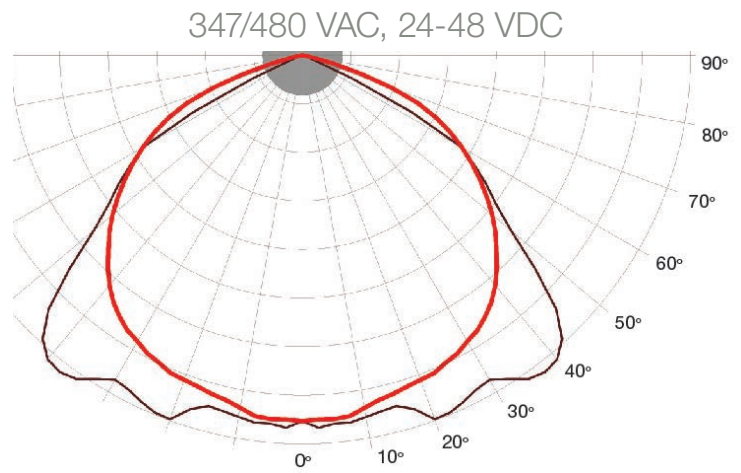
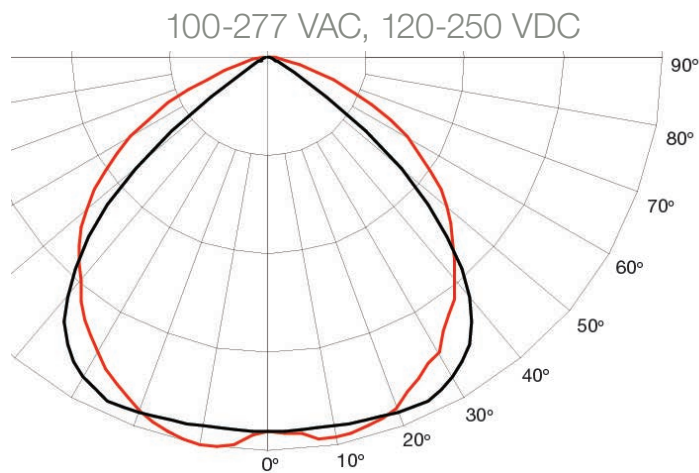
Beam Distribution

= 0°
 = 90°

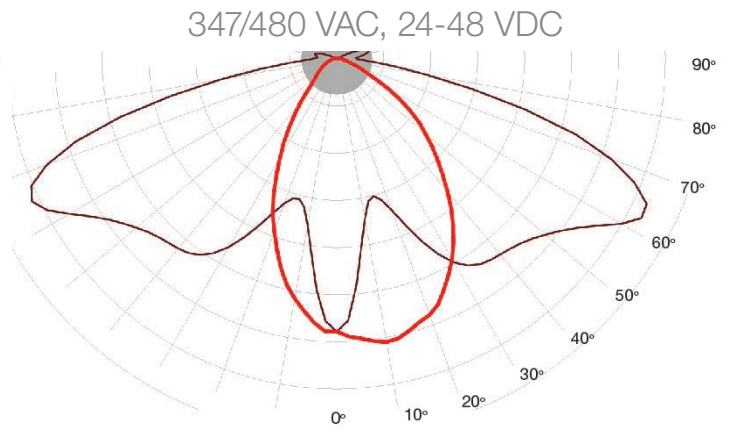
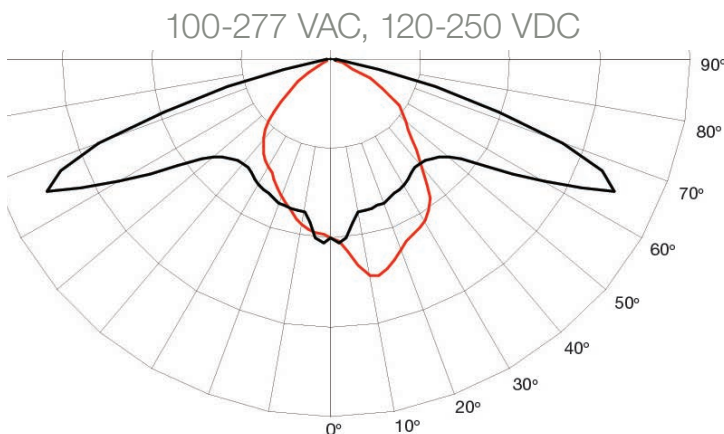
180° Beam Angle



360° Beam Angle



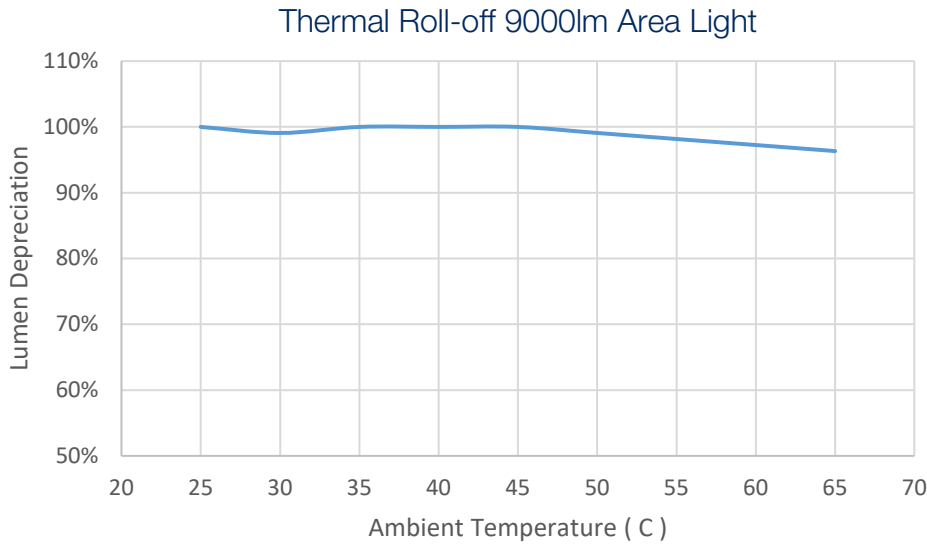
Wide Beam Angle



DISCLAIMER. All product information provided is, to the best of Dialight's knowledge, accurate as of the date of publication. When ordering, refer to www.dialight.com for current versions of: (a) relevant product documentation (including the relevant product data sheets); (b) Dialight terms and conditions of sale; and, (c) the relevant product warranty. To the extent that any contract is deemed formed between Dialight and the purchaser of Dialight products and/or an end-user, versions of documents available at www.dialight.com as at the date of sale shall be the versions incorporated therein. In the event of any discrepancy between this document or information provided at www.dialight.com, the latter shall prevail.

Thermal Roll-Off

Vigilant® & SafeSite® LED Area Light - 100-277 VAC, 120-250 VDC



| Ambient Temperature (°C) | Lumen Degradation |
|--------------------------|-------------------|
| 25° | 100% |
| 30° | 99% |
| 35° | 100% |
| 40° | 100% |
| 45° | 100% |
| 50° | 99% |
| 55° | 98% |
| 60° | 97% |
| 65° | 96% |

All values typical unless otherwise stated (tolerance +/- 10%)

In Rush Current / Circuit Breakers

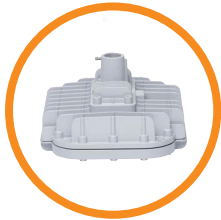
Vigilant® & SafeSite® LED Area Light - 100-277 VAC, 120-250 VDC

| Model | Wattage | In rush current @ input voltage | | | Time duration of in rush current @ input voltage | | |
|---------|---------|---------------------------------|---------|---------|--|---------|---------|
| | | 120 VAC | 230 VAC | 277 VAC | 120 VAC | 230 VAC | 277 VAC |
| 9K | 66 | 8A | 15A | 18A | 1ms | 1ms | 1ms |
| 7K | 52 | 8A | 15A | 18A | 1ms | 1ms | 1ms |
| 7K Wide | 64 | 8A | 15A | 18A | 1ms | 1ms | 1ms |
| 5.5K | 40 | 8A | 15A | 18A | 1ms | 1ms | 1ms |
| 4K | 30 | 8A | 15A | 18A | 1ms | 1ms | 1ms |
| 3K | 24 | 8A | 15A | 18A | 1ms | 1ms | 1ms |

DISCLAIMER. All product information provided is, to the best of Dialight's knowledge, accurate as of the date of publication. When ordering, refer to www.dialight.com for current versions of: (a) relevant product documentation (including the relevant product data sheets); (b) Dialight terms and conditions of sale; and, (c) the relevant product warranty. To the extent that any contract is deemed formed between Dialight and the purchaser of Dialight products and/or an end-user, versions of documents available at www.dialight.com as at the date of sale shall be the versions incorporated therein. In the event of any discrepancy between this document or information provided at www.dialight.com, the latter shall prevail.

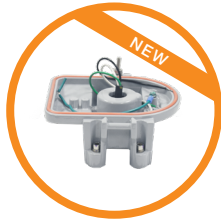
Mounting Options

Universal Mounting Adapter



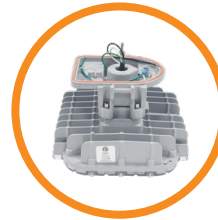
Area Light Base

+



HZXUMA

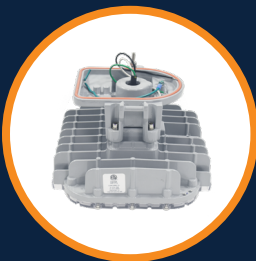
=



UMA Area Light

Our new Universal Mounting Adapter, now provides even greater flexibility by allowing you to modify stock you have on-hand to configure based on the needs of your customer without having to stock a lot of factory installed systems. All available in UL1598/A and UL844 Class I, Div. 2, Class II, and Class III certified options, as well as CSA and NOM certifications.

Area Lights with Universal Mounting Adapter & Brackets Sold Separately



UMA Area Light
ALx-xxxx-xxUx-xxN

+



Stanchion 45°
HZXS45



Wall 45°
HZXW45



Wall 0°
HZXW01



Conveyor
HZXCV34



Ceiling
HZXFM

Area Lights with Purchased Brackets Factory Installed



Stanchion 45°



Wall 45°



Wall 0°



Conveyor



Ceiling

DISCLAIMER. All product information provided is, to the best of Dialight's knowledge, accurate as of the date of publication. When ordering, refer to www.dialight.com for current versions of: (a) relevant product documentation (including the relevant product data sheets); (b) Dialight terms and conditions of sale; and, (c) the relevant product warranty. To the extent that any contract is deemed formed between Dialight and the purchaser of Dialight products and/or an end-user, versions of documents available at www.dialight.com as at the date of sale shall be the versions incorporated therein. In the event of any discrepancy between this document or information provided at www.dialight.com, the latter shall prevail.

Mounting Accessories



HZXSAFECBLS

- Safety cable kit



Certified to: UL 50E • CSA C22.2 No. 94.2-07

HZXSTAN100S

- 1.00" (1.315" Pole OD) Slip-fit stanchion mount

HZXSTAN125S

- 1.25" (1.660" Pole OD) Slip-fit stanchion mount

HZXSTAN150S

- 1.50" (1.900" Pole OD) Slip-fit stanchion mount

HZXSTAN200S

- 2.00" (2.375" Pole OD) Slip-fit stanchion mount



HZXSTAN100T

- 1.00" (1.315" Pole OD) NPT threaded stanchion mount

HZXSTAN125T

- 1.25" (1.660" Pole OD) NPT threaded stanchion mount

HZXSTAN150T

- 1.50" (1.900" Pole OD) NPT threaded stanchion mount

HZXSTAN200T

- 2.00" (2.375" Pole OD) NPT threaded stanchion mount



HZXW3

- 316 stainless steel bracket

HZXW7

- Aluminum bracket



HZXW4

- 316 stainless steel bracket with pipe clamp

HZXW8

- Aluminum bracket with pipe clamp



Certified to: UL 50E • CSA C22.2 No. 94.2-07

HZXJB075

- 0.75" Ceiling / Wall / Pole mount junction box

HZXJB100

- 1.00" Ceiling / Wall / Pole mount junction box

HZXJB125

- 1.25" Ceiling / Wall / Pole mount junction box

HZXJB150

- 1.50" Ceiling / Wall / Pole mount junction box



Certified to: UL 50E • UL 1203

ISA 12.12.01 • CSA C22.2 No. 94.2-07

HBXC1

- 0.75" NPT Ceiling mount

Mounting Options

Retro-fit Adapters



Area Lights with Retro-fit Adapters



Killark® Certilite® & Certilite® V
HZXTHKL



Appleton® Mercmaster III
HZXTHAP



Crouse-Hinds Champ®
HZXTHCH



Holophane® Petrolux II, III
HZXTHP3



Appleton® Mercmaster II
HZXTHM2



Thomas & Betts Hazlux®
HZXTHTB



GE Filtr-Gard™
HZXTHGE

DISCLAIMER. All product information provided is, to the best of Dialight's knowledge, accurate as of the date of publication. When ordering, refer to www.dialight.com for current versions of: (a) relevant product documentation (including the relevant product data sheets); (b) Dialight terms and conditions of sale; and, (c) the relevant product warranty. To the extent that any contract is deemed formed between Dialight and the purchaser of Dialight products and/or an end-user, versions of documents available at www.dialight.com as at the date of sale shall be the versions incorporated therein. In the event of any discrepancy between this document or information provided at www.dialight.com, the latter shall prevail.

Retro-fit Options

Retro-fit adapters can be factory installed. See product ordering information for details.

Eaton's Crouse-Hinds – Champ®
 GE Lighting Solutions – Filtr-Gard™
 Holophane Petrolux® II, III
 Thomas & Betts Hazlux®
 Appleton® Mercmaster III
 Appleton® Mercmaster II
 Killark® Certilite® & Certilite® V

*Petrolux adapter available as a standalone accessory only



| Eaton's Crouse-Hinds – Champ® - HZXTHCH | | | | |
|---|---------|------|-----------|------------|
| Pendant | Ceiling | Wall | Stanchion | Quad Mount |
| APM2 | CM2 | TWM2 | JM5 | QM25 |
| APM3 | CM3 | TWM3 | PM5 | |
| HPM2 | | | | |



| GE Lighting Solutions – Filtr-Gard™ - HZXTHGE | | | | |
|---|---------|------|-----------|------------|
| Pendant | Ceiling | Wall | Stanchion | Quad Mount |
| 3P | 3F | 3C | 3W | 5S |
| 4P | 4F | | 4W | 6S |
| | | | | 5J, 6J |



| Holophane® Petrolux II, III - HZXTHP3 | | | | |
|---------------------------------------|-----------|-----------|---------|------|
| Pendant | Universal | Stanchion | Ceiling | Wall |
| PD | UN | SA | CD | WL |
| GH | | ST | CE | W |
| P | | A | B, C, D | |

DISCLAIMER. All product information provided is, to the best of Dialight's knowledge, accurate as of the date of publication. When ordering, refer to www.dialight.com for current versions of: (a) relevant product documentation (including the relevant product data sheets); (b) Dialight terms and conditions of sale; and, (c) the relevant product warranty. To the extent that any contract is deemed formed between Dialight and the purchaser of Dialight products and/or an end-user, versions of documents available at www.dialight.com as at the date of sale shall be the versions incorporated therein. In the event of any discrepancy between this document or information provided at www.dialight.com, the latter shall prevail.

Retro-fit Options



| Thomas & Betts Hazlux® - HZXTHTB | | | | |
|----------------------------------|---------------------|---------------------|--------------------|--------------------|
| Pendant | Pendant Cone | Flexible Pendant | Ceiling | Wall |
| VP2 | VA2 | VF2 | VC2 | VB2 |
| VP3 | VA3 | VF3 | VC3 | VB3 |
| Wall | 25° Angle Stanchion | 25° Angle Stanchion | Straight Stanchion | Straight Stanchion |
| VB2-VIB | VS4 | VS4-VIB | VL4 | VL4-VIB |
| VB3-VIB | VS5 | VS5-VIB | VL5 | VL5-VIB |



| Appleton® Mercmaster III - HZXTHAP | | | |
|------------------------------------|---------|----------|-----------|
| Pendant | Ceiling | Wall | Stanchion |
| KPA-75, 100 | KPC-75 | KPWB-75 | KPS-125 |
| KPAF-75, 100 | KPC-100 | KPWB-100 | KPS-150 |
| KPCH-75, 100 | | | KPST-125 |
| | | | KPST-150 |



| Appleton® Mercmaster II - HZXTHM2 | | | |
|-----------------------------------|---------|----------|-----------|
| Pendant | Ceiling | Wall | Stanchion |
| LPA-75 | LPC-75 | LPWB-75 | LPS-125 |
| LPA-100 | LPC-100 | LPWB-100 | LPS-150 |

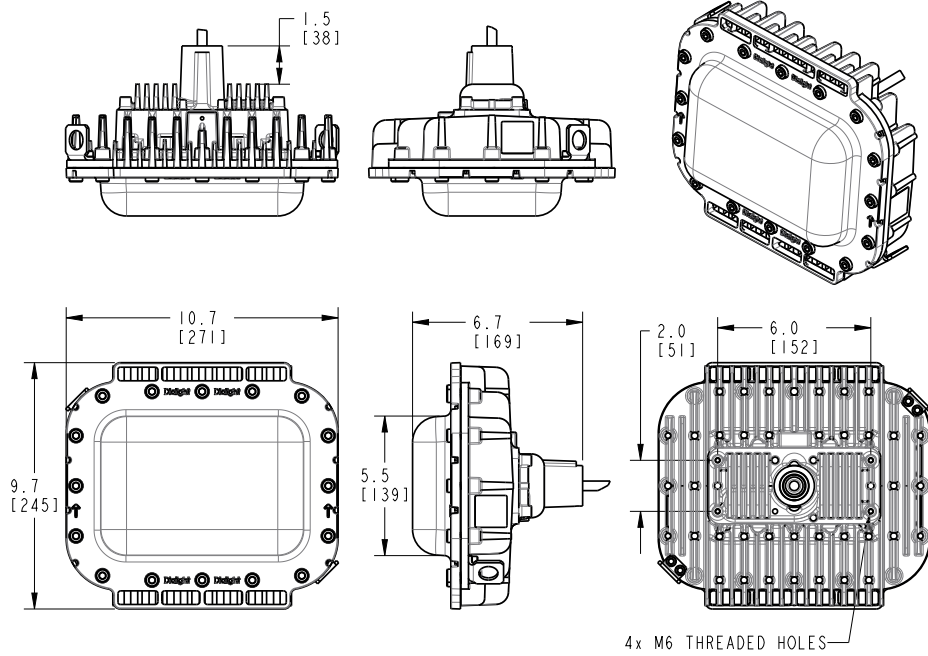


| Killark® Certilite® & Certilite® V - HZXTHKL | | | |
|--|-------------------|---------------|-----------|
| Pendant | Ceiling | Wall | Stanchion |
| VMA2B & VMA-2 | VMX2B & VMX-2 | VMB2B & VMB-2 | VMD4B |
| VMA3B & VMA-3 | VMX3B & VMX-3 | VMB3B & VMB-3 | VMD5B |
| VMC2B & VMC-2 | VMX6B, 7B, 8B, 9B | | VMS5B |
| VMC3B & VMC-3 | | | |
| VMF2B, 3B | | | |

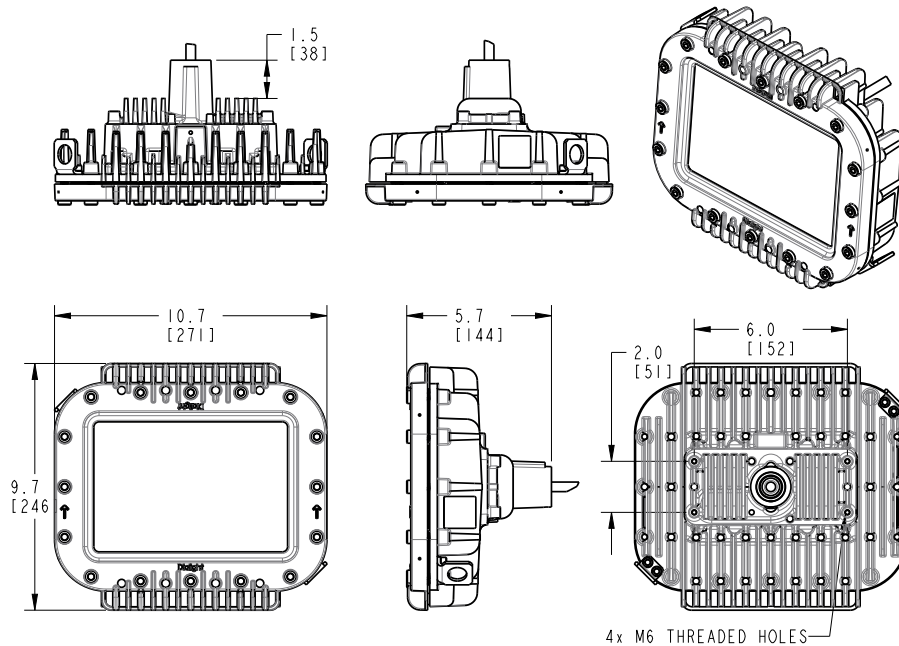
DISCLAIMER. All product information provided is, to the best of Dialight's knowledge, accurate as of the date of publication. When ordering, refer to www.dialight.com for current versions of: (a) relevant product documentation (including the relevant product data sheets); (b) Dialight terms and conditions of sale; and, (c) the relevant product warranty. To the extent that any contract is deemed formed between Dialight and the purchaser of Dialight products and/or an end-user, versions of documents available at www.dialight.com as at the date of sale shall be the versions incorporated therein. In the event of any discrepancy between this document or information provided at www.dialight.com, the latter shall prevail.

Dimensional Drawings - Area Light

Polycarbonate Lens



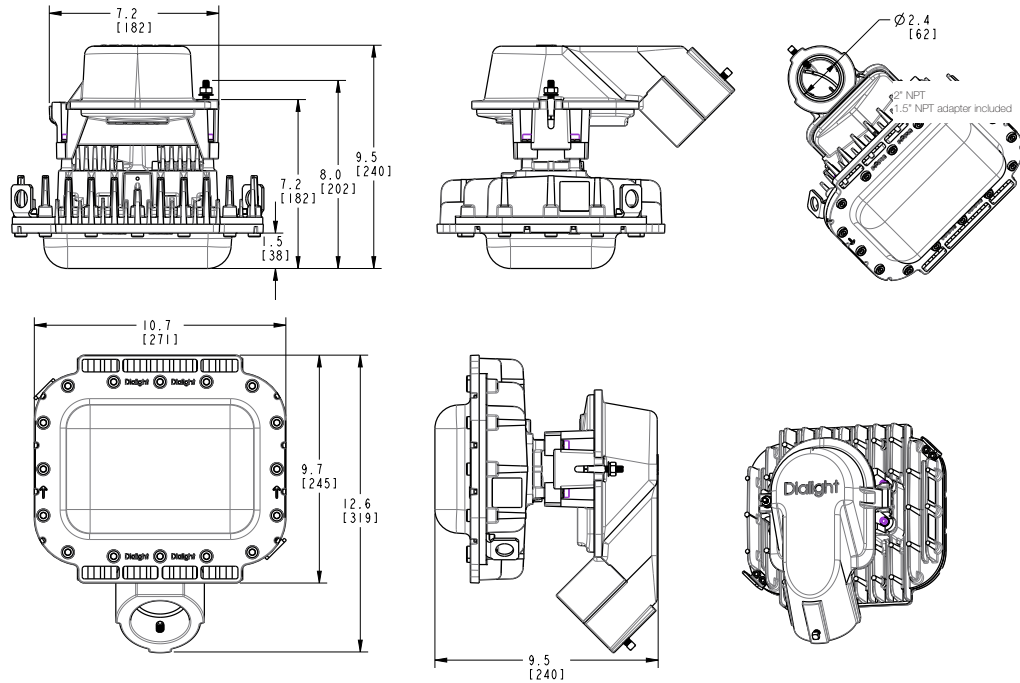
Tempered Glass Lens



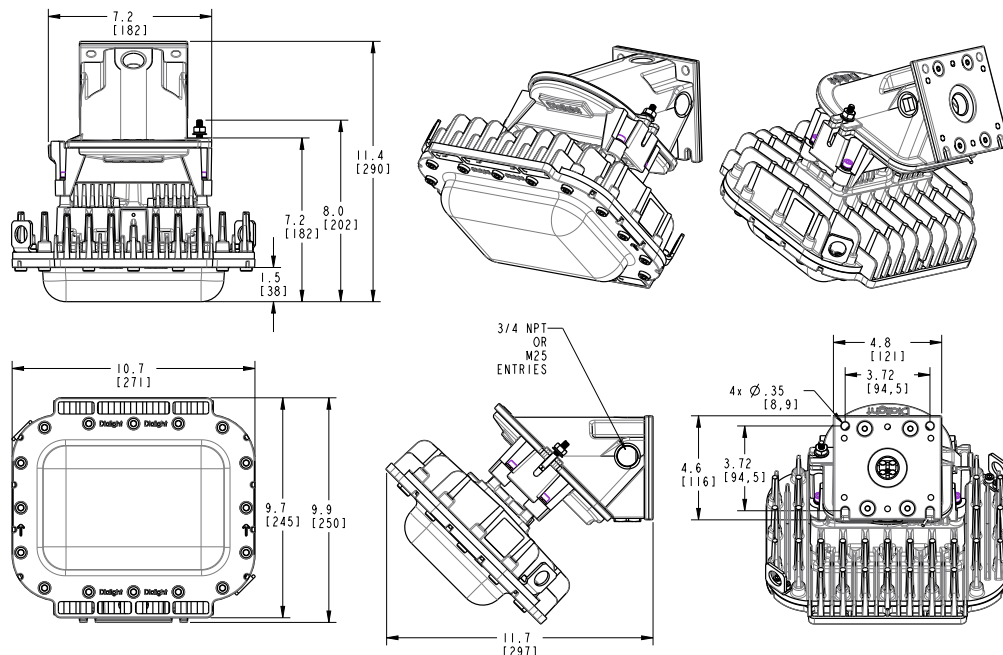
Dimensions in inches [mm]

Dimensional Drawings - Universal Mounting Adapter

45° Stanchion Mount



45° Wall Mount

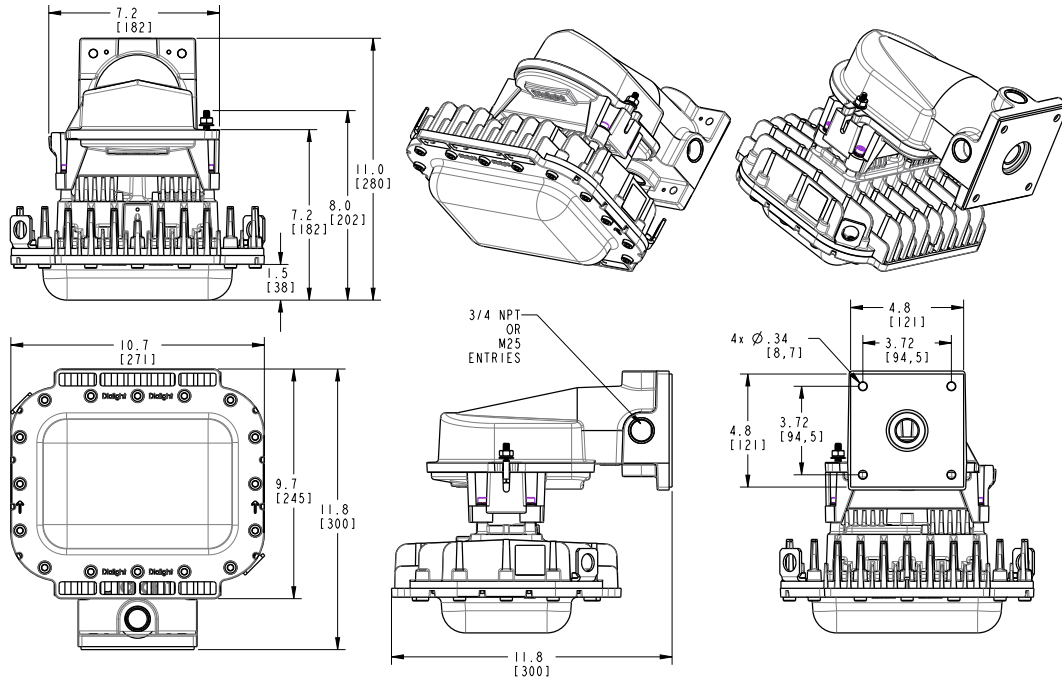


Dimensions in inches [mm]

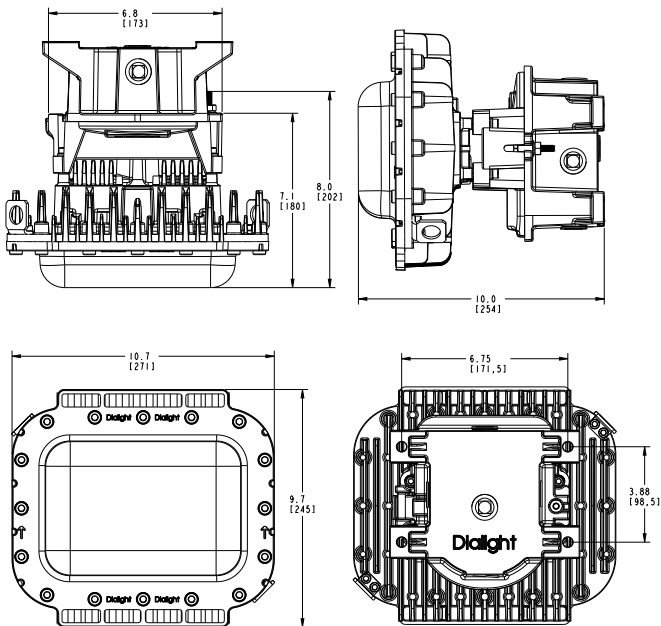
DISCLAIMER. All product information provided is, to the best of Dialight's knowledge, accurate as of the date of publication. When ordering, refer to www.dialight.com for current versions of: (a) relevant product documentation (including the relevant product data sheets); (b) Dialight terms and conditions of sale; and, (c) the relevant product warranty. To the extent that any contract is deemed formed between Dialight and the purchaser of Dialight products and/or an end-user, versions of documents available at www.dialight.com as at the date of sale shall be the versions incorporated therein. In the event of any discrepancy between this document or information provided at www.dialight.com, the latter shall prevail.

Dimensional Drawings - Universal Mounting Adapters

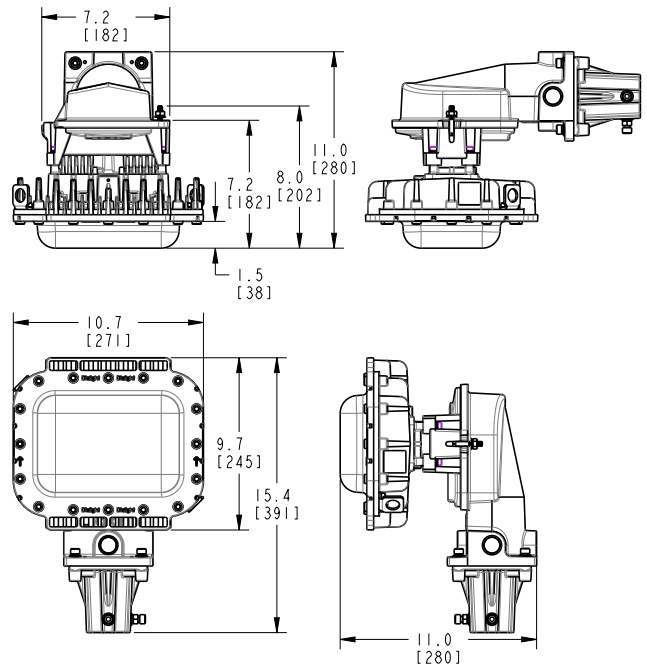
Wall Mount



Ceiling Mount



Conveyor Mount

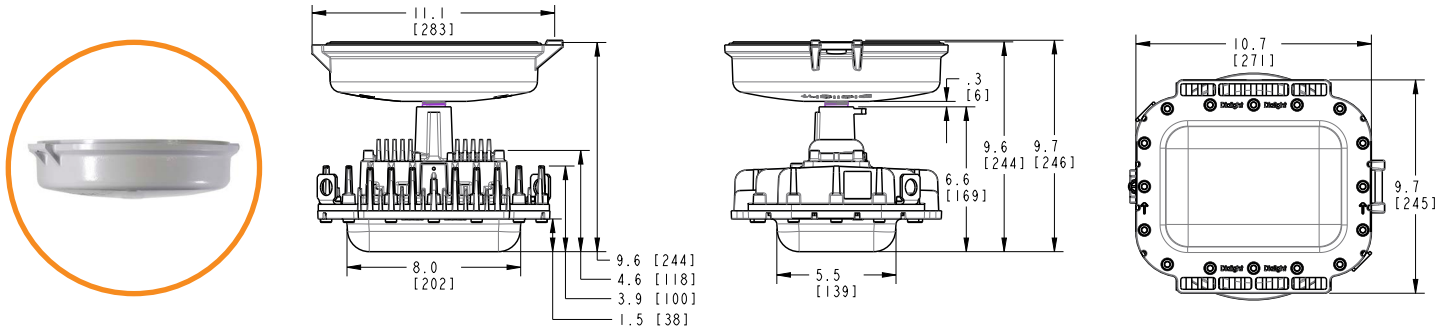


Dimensions in inches [mm]

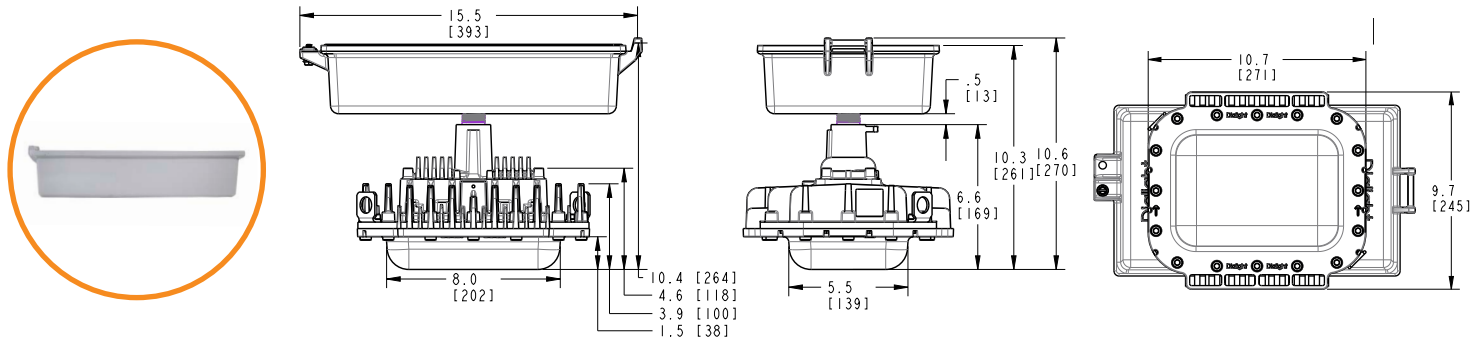
DISCLAIMER. All product information provided is, to the best of Dialight's knowledge, accurate as of the date of publication. When ordering, refer to www.dialight.com for current versions of: (a) relevant product documentation (including the relevant product data sheets); (b) Dialight terms and conditions of sale; and, (c) the relevant product warranty. To the extent that any contract is deemed formed between Dialight and the purchaser of Dialight products and/or an end-user, versions of documents available at www.dialight.com as at the date of sale shall be the versions incorporated therein. In the event of any discrepancy between this document or information provided at www.dialight.com, the latter shall prevail.

Dimensional Drawings - Retro-fit Kits

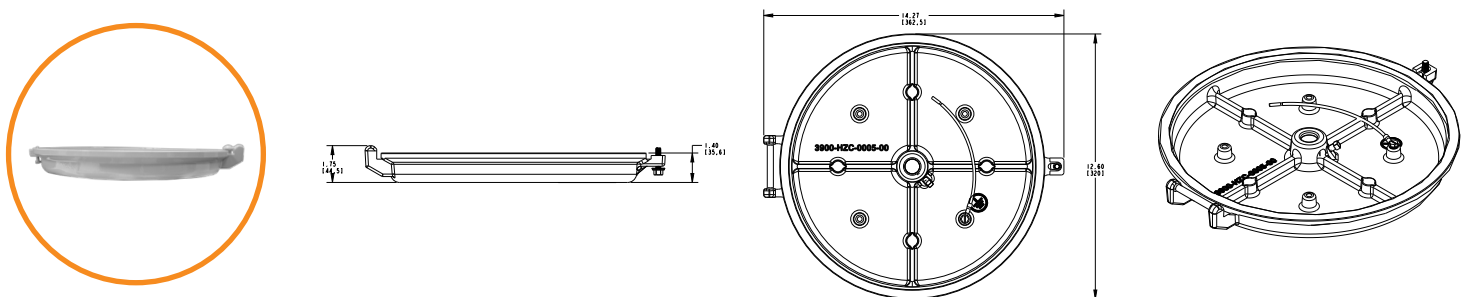
Eaton's Crouse-Hinds – Champ® - HZXTHCH



GE Lighting Solutions – Filtr-Gard™ - HZXTHGE



Holophane® Petrolux II, III - HZXTHP3

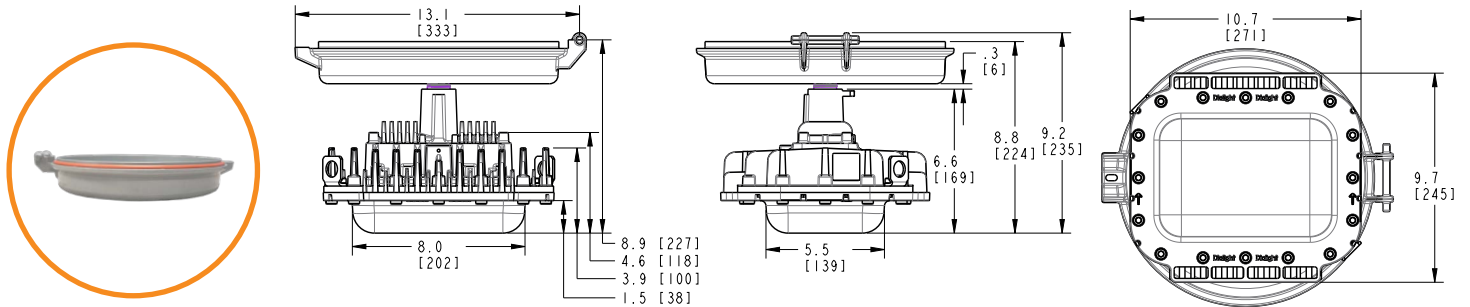


Dimensions in inches [mm]

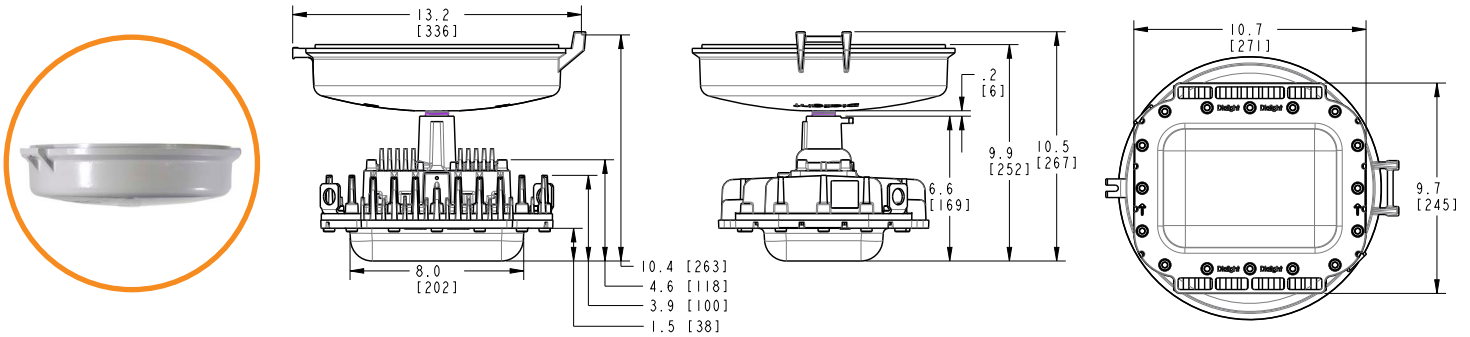
DISCLAIMER. All product information provided is, to the best of Dialight's knowledge, accurate as of the date of publication. When ordering, refer to www.dialight.com for current versions of: (a) relevant product documentation (including the relevant product data sheets); (b) Dialight terms and conditions of sale; and, (c) the relevant product warranty. To the extent that any contract is deemed formed between Dialight and the purchaser of Dialight products and/or an end-user, versions of documents available at www.dialight.com as at the date of sale shall be the versions incorporated therein. In the event of any discrepancy between this document or information provided at www.dialight.com, the latter shall prevail.

Dimensional Drawings - Retro-fit Kits

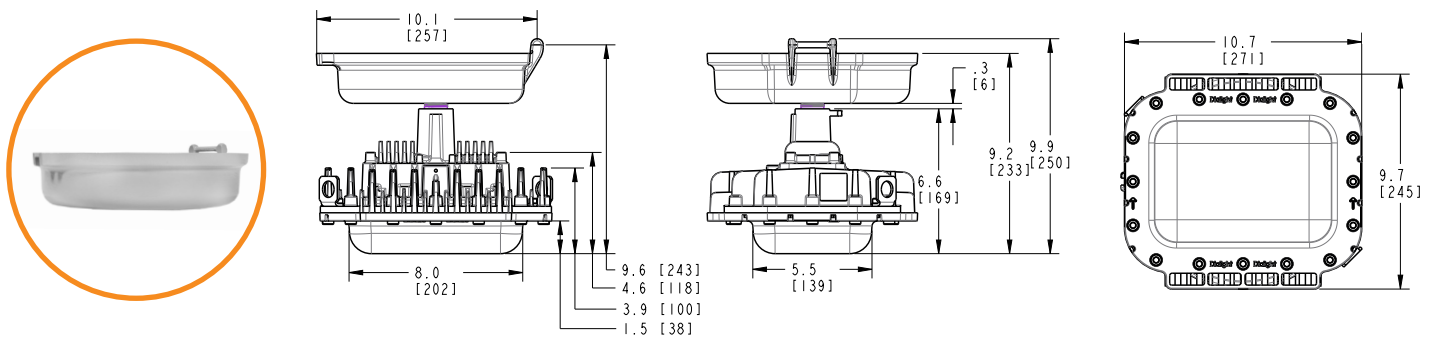
Thomas & Betts Hazlux® - HZXTHTB



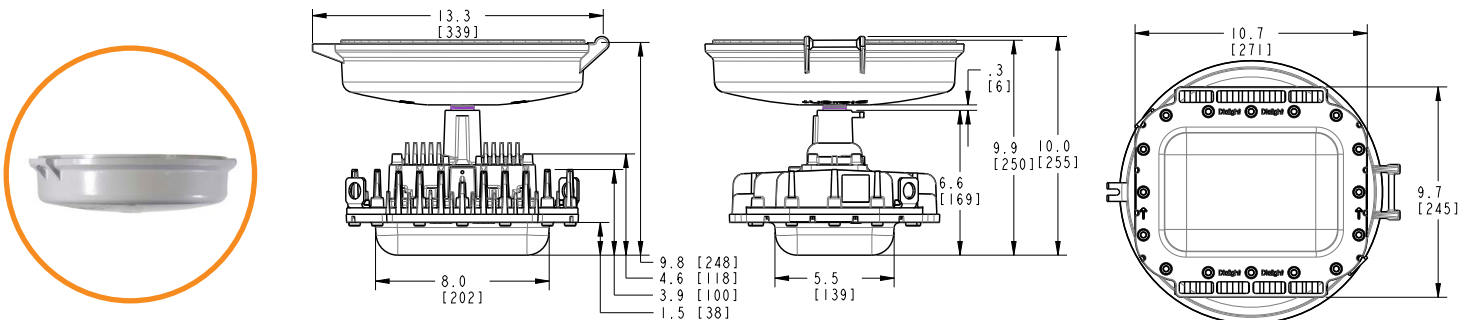
Appleton® Mercmaster III - HZXTHAP



Appleton® Mercmaster II - HZXTHM2



Killark® Certilite® & Certilite® V - HZXTHKL



DISCLAIMER. All product information provided is, to the best of Dialight's knowledge, accurate as of the date of publication. When ordering, refer to www.dialight.com for current versions of: (a) relevant product documentation (including the relevant product data sheets); (b) Dialight terms and conditions of sale; and, (c) the relevant product warranty. To the extent that any contract is deemed formed between Dialight and the purchaser of Dialight products and/or an end-user, versions of documents available at www.dialight.com as at the date of sale shall be the versions incorporated therein. In the event of any discrepancy between this document or information provided at www.dialight.com, the latter shall prevail.

.25" thick; HZXW4 and HZXW8 will mount to 1.5" conduit and comes with pipe mount clamps.



North American HQ

1501 Route 34 South
Farmingdale, NJ 07727
Tel: 732-919-3119
Fax: 732-751-5778
info@dialight.com

EMEA Technical Centre

Ejby Industrivej 91 B
2600 Glostrup
Tel: +45 8877 4545 (Denmark)
Tel: +44 1638 666541 (UK)
Tel: +49 89 12089 5713 (Germany)
Tel: +33 3 23 22 62 58 (France)
sales-europe@dialight.com

Houston

16830 Barker Springs Rd
Ste 407
Houston, TX 77084
Tel: 732-919-3119
Fax: 281-492-1531
info@dialight.com

Middle East

205, Clover Bay Tower,
Al Abraj Street, Business Bay
P.O. Box 123997 Dubai, U.A.E.
Tel: +971 (4) 818 31 56

Australia

108 Howe Street
Osborne Park, WA 6017
Tel: +61 (0) 8 9244 7600
Fax: +61 (0) 8 9244 7601
info@dialight.com.au

Southeast Asia

33 Ubi Avenue 3
#07-72 Vertex (Tower A)
Singapore 408868
Tel: +65 6578 7157
Fax: +65 6578 7150
enquiry@dialight.com.sg

Brazil

Alameda Mercurio,
225 – American Park Empresarial NR
Indaiatuba – SP – 13347– 662
Tel: +55 (19) 3113-4300
Fax: +55 (19) 3113-4300
brasil@dialight.com

WARNING / DISCLAIMERS:

Installation & secondary retention. The use of this product without proper installation (including secondary retention / netting) and periodic inspections, could cause severe injury or death. Dialight recommends that all installations should use secondary retention / netting (appropriate to the installation environment) as applicable. Dialight products are intended for ultimate purchase, installation and operation by knowledgeable persons trained in the functional assessment, installation, use and maintenance of such products and all customers (including but not limited to end customers) are responsible for assessing the suitability of Dialight products for any given installation requirement. It is the exclusive responsibility of the contractor, installer and/or end-user to: (a) determine the suitability of the product for its intended application; and, (b) ensure that the product is safely installed (with secondary retention / netting as appropriate) and in compliance with all applicable laws and regulations.

Product specifications & warranties. All product information provided is, to the best of Dialight's knowledge, accurate as of the date of publication. All values and performance data herein are design or typical values when measured under laboratory conditions. The information herein is subject to change without notice. The products / software detailed herein are subject to applicable warranties and terms and conditions of use/purchase. Unless agreed otherwise in writing by an authorized representative of Dialight, Dialight does not represent that its products are fit for any particular purpose and accepts no liability for the installation and/or unauthorised use of its products. When ordering, refer to www.dialight.com for current versions of: (a) relevant product documentation (including relevant product data sheets); (b) Dialight terms and conditions of sale; and, (c) the relevant product warranties. To the extent that any contract is deemed formed between Dialight and the purchaser of Dialight products and/or an end-user, versions of documents available at www.dialight.com as at the date of sale shall be the versions incorporated therein. In the event of any discrepancy between this document and information provided at www.dialight.com, the latter shall prevail.

Exclusion of liability. To the extent permissible under the relevant law, Dialight disclaims all liability for personal injury and/or other damage resulting from any dislodgment or other dislocation of its products. Whilst Dialight has used its reasonable endeavours to ensure the completeness and accuracy of information herein, Dialight does not assume any liability for damages resulting from use of this information or for any third-party representations made in relation to Dialight products.