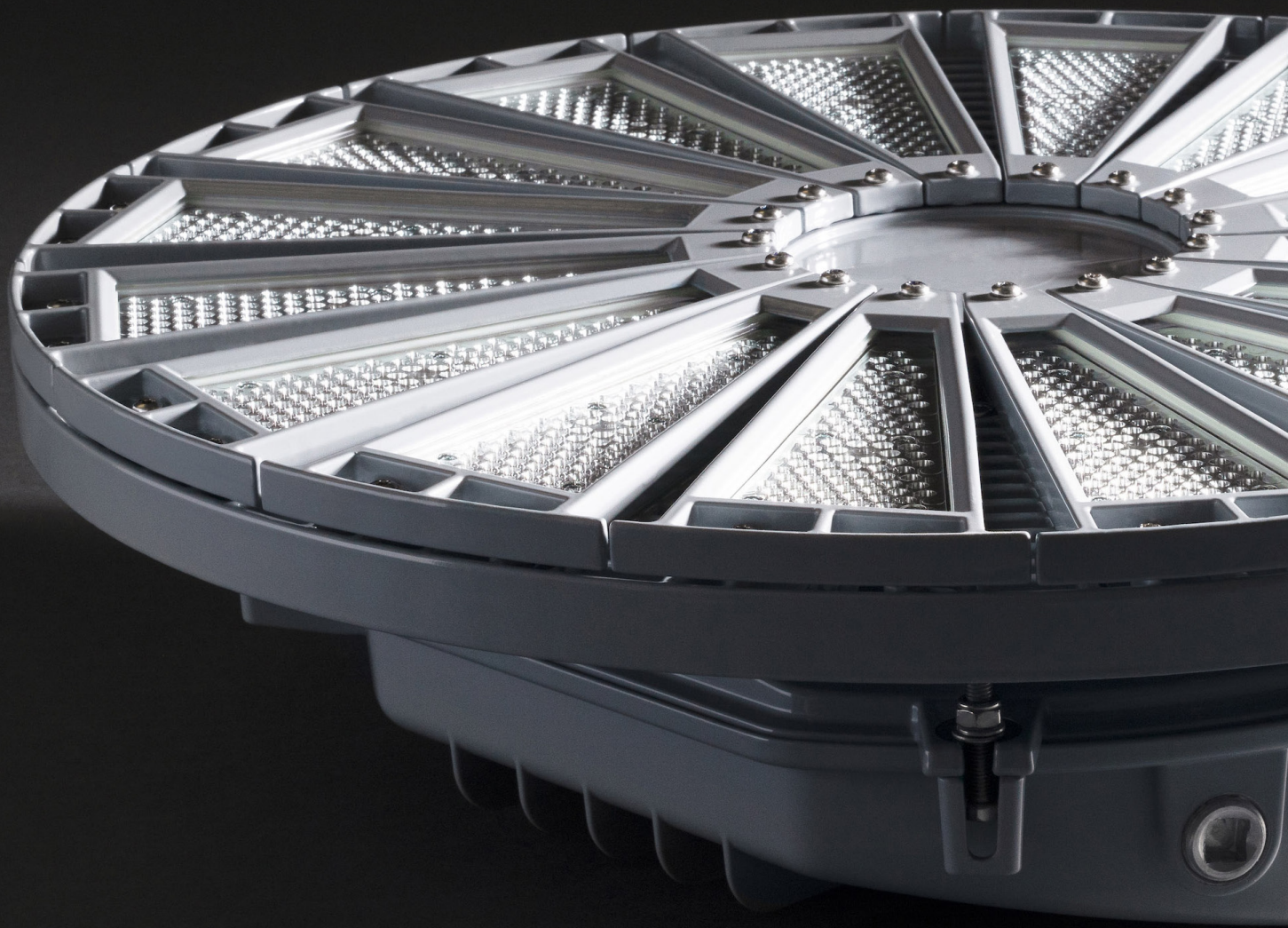


Dialight

MADE TO STOCK

Catalog



2021 Q2

Dialight LED Area Light

Stock Part Numbers



Product	Brand	Platform Part Number	Legacy Part Number	Description
Area Light	SafeSite®	ALC7BC27NNWNGN	HZCFC2NDRWOB	SafeSite Area Light, 360°, 7300 Lumens, 52 Watts, 100 - 277 VAC, Cool White 5000K, Glass - Clear, 10' [3 meter] Power Cable, Gray, [UL 844 Class I Div. 1]
Area Light	SafeSite®	ALD5BB56NNWNGN	HZD9C9N	SafeSite Area Light, 360°, 6000 Lumens, 58 Watts, 347 - 480 VAC, Cool White 5000K, Polycarbonate - Diffused, 10' [3 meter] Power Cable, Gray, [UL 844 Class I Div. 2]
Area Light	SafeSite®	ALD5BC25NNWNGN	HZD5C2N	SafeSite Area Light, 360°, 5300 Lumens, 40 Watts, 100 - 277 VAC, Cool White 5000K, Polycarbonate - Diffused, 10' [3 meter] Power Cable, Gray, [UL 844 Class I Div. 2]
Area Light	SafeSite®	ALD5BC26NNWNGN		SafeSite Area Light, 360°, 5300 Lumens, 40 Watts, 100 - 277 VAC, Cool White 5000K, Polycarbonate - Diffused, Gray, 10' [3 meter] Power Cable, [UL 844 Class I Div. 2]
Area Light	SafeSite®	ALD7BC26NCNNGN	HZD9C2GC	SafeSite Area Light, 360°, 5700 Lumens, 40 Watts, 100 - 277 VAC, Cool White 5000K, Glass - Clear, Retro-fit Adapter - Crouse-Hinds - Champ, Gray, [UL 844 Class I Div. 2]
Area Light	SafeSite®	ALD7BC26NNWNGN		SafeSite Area Light, 360°, 5700 Lumens, 40 Watts, 100 - 277 VAC, Cool White 5000K, Glass - Clear, Gray, 10' [3 meter] Power Cable, [UL 844 Class I Div. 2]
Area Light	SafeSite®	ALD7BC26NUNNGN		SafeSite Area Light, 360°, 5700 Lumens, 40 Watts, 100 - 277 VAC, Cool White 5000K, Glass - Clear, Gray, Mounting Hub, [UL 844 Class I Div. 2]
Area Light	SafeSite®	ALF5BC27NNWNGN	HZFFC2N	SafeSite Area Light - Gen II, 360° Circular , 7250 Lumens, 69 Watts, 100-277V AC, Cool White, Clear Polycarbonate Lens, Anti-Static Coating [CID2, CIID1, CIID2, CIID1, CIID2]
Area Light	SafeSite®	ALC7BC27NBWNGN	HZCFC2NDR	SafeSite Area Light, 360°, 7300 Lumens, 52 Watts, 100 - 277 VAC, Cool White 5000K, Glass - Clear, Swivel Bracket, Locking 0-90 Degrees - 316 SS, 10' [3 meter] Power Cable, Gray, [UL 844 Class I Div. 1]
Area Light	Vigilant®	ALU5BC26NNWNGN	STW9C2N	Vigilant Area Light, 360°, 5300 Lumens, 40 Watts, 100 - 277 VAC, Cool White 5000K, Polycarbonate - Diffused, 10' [3 meter] Power Cable, Gray, [UL 1598/A]
Area Light	Vigilant®	ALU5BC27NNWNGN		Vigilant Area Light, 360°, 6700 Lumens, 52 Watts, 100 - 277 VAC, Cool White 5000K, Polycarbonate - Diffused, Gray, 10' [3 meter] Power Cable, [UL 1598/A]
Area Light	Vigilant®	ALU5BC29NNWNGN		Vigilant Area Light, 360°, 8300 Lumens, 66 Watts, 100 - 277 VAC, Cool White 5000K, Polycarbonate - Diffused, Gray, 10' [3 meter] Power Cable, [UL 1598/A]

Dialight LED Area Light

Accessories

Stock Part Numbers



Product	Brand	Part Number	Description
Area Light	Accessory	HZXCBL2	Accessory - Safety Cable Kit
Area Light	Accessory	HZXJB075	Accessory- 0.75" Ceiling / Wall / Pole Mount Junction Box
Area Light	Accessory	HZXJB075PC1	Accessory- 0.75" Ceiling / Wall / Pole Mount Junction Box - with 120VAC Photocell
Area Light	Accessory	HZXSAFECBLS	Accessory - Safety cables
Area Light	Accessory	HZXSAFEKIT	Accessory- Safety cable kit
Area Light	Accessory	HZXSAFETABS	Accessory- Safety Tabs
Area Light	Accessory	HZXSTAN100S	Accessory- 1.00" (1.315" Pole OD) Slip-Fit Stanchion Mount Junction Box with Junction box mounting hardware (for Area Light products, requires bracket HZXW3 or HZXW7 not included. Brackets not required for Flood Light products)
Area Light	Accessory	HZXSTAN125S	Accessory- 1.25" (1.660" Pole OD) Slip-Fit Stanchion Mount Junction Box with Junction box mounting hardware (for Area Light products, requires bracket HZXW3 or HZXW7 not included. Brackets not required for Flood Light products)
Area Light	Accessory	HZXSTAN150S	Accessory- 1.50" (1.900" Pole OD) Slip-Fit Stanchion Mount Junction Box with Junction box mounting hardware (for Area Light products, requires bracket HZXW3 or HZXW7 not included. Brackets not required for Flood Light products)
Area Light	Accessory	HZXSTAN150T	Accessory- 1.50" (1.900" Pole OD) NPT Threaded Stanchion Mount Junction Box with Junction box mounting hardware (for Area Light products, requires bracket HZXW3 or HZXW7 not included. Brackets not required for Flood Light products)
Area Light	Accessory	HZXSTAN200S	Accessory- 2.00" (2.375" Pole OD) Slip-Fit Stanchion Mount Junction Box with Junction box mounting hardware (for Area Light products, requires bracket HZXW3 or HZXW7 not included. Brackets not required for Flood Light products)
Area Light	Accessory	HZXSTAN200T	Accessory- 2.00" (2.375" Pole OD) NPT Threaded Stanchion Mount Junction Box with Junction box mounting hardware (for Area Light products, requires bracket HZXW3 or HZXW7 not included. Brackets not required for Flood Light products)
Area Light	Accessory	HZXS45	Area Light Stanchion Mount 45° Bracket
Area Light	Accessory	HZXTHAP	Appleton MercMaster III - Retrofit Adapter with retrofit wiring box
Area Light	Accessory	HZXTHCH	Crouse Hinds Champ - Retrofit Adapter with retrofit wiring box
Area Light	Accessory	HZXTHGE	GE Filtr-Gard - Retrofit Adapter with retrofit wiring box
Area Light	Accessory	HZXTHKL	Killark Certilite & Certilite V - Retrofit Adapter with retrofit wiring box
Area Light	Accessory	HZXTHM2	Appleton MercMaster II - Retrofit Adapter with retrofit wiring box
Area Light	Accessory	HZXTHP3	Holophane PetroLux II & III - Retrofit Adapter with retrofit wiring box

DISCLAIMER. All product information provided is, to the best of Dialight's knowledge, accurate as of the date of publication. When ordering, refer to www.dialight.com for current versions of: (a) relevant product documentation (including the relevant product data sheets); (b) Dialight terms and conditions of sale; and, (c) the relevant product warranty. To the extent that any contract is deemed formed between Dialight and the purchaser of Dialight products and/or an end-user, versions of documents available at www.dialight.com as at the date of sale shall be the versions incorporated therein. In the event of any discrepancy between this document or information provided at www.dialight.com, the latter shall prevail.

DISCLAIMER. All product information provided is, to the best of Dialight's knowledge, accurate as of the date of publication. When ordering, refer to www.dialight.com for current versions of: (a) relevant product documentation (including the relevant product data sheets); (b) Dialight terms and conditions of sale; and, (c) the relevant product warranty. To the extent that any contract is deemed formed between Dialight and the purchaser of Dialight products and/or an end-user, versions of documents available at www.dialight.com as at the date of sale shall be the versions incorporated therein. In the event of any discrepancy between this document or information provided at www.dialight.com, the latter shall prevail.

Dialight LED Area Light
Accessories

Stock Part Numbers Continued



Product	Brand	Part Number	Description
Area Light	Accessory	HZXHTTB	Thomas and Betts Hazlux - Retrofit Adapter with retrofit wiring box
Area Light	Accessory	HZXW01	Accessory - Area Light Wall Mount Bracket
Area Light	Accessory	HZXW3	Accessory- Stainless Steel bracket with mounting hardware
Area Light	Accessory	HZXW4	Accessory- Stainless Steel bracket with Pipe Clamp and mounting hardware
Area Light	Accessory	HZXW45	Accessory - Area Light Wall Mount 45° Bracket
Area Light	Accessory	HZXW7	Accessory- Aluminum bracket with mounting hardware
Area Light	Accessory	HZXW8	Accessory- Aluminum bracket with Pipe Clamp and mounting hardware
Area Light	Accessory	HZXUMA	Accessory - Area Light UMA Hub

Dialight LED Floodlight

Stock Part Numbers



Product	Brand	Platform Part Number	Legacy Part Number	Description
Floodlight	SafeSite®	FLD76B2ANTNNGN	FLD266NC2NG	SafeSite Floodlight 11250 Lumens, 106 Watts, 100-277 VAC, Cool White, NEMA 6, Clear Tempered Glass Lens, [CID2]
Floodlight	SafeSite®	FLD76B2ANBRNGN	FLD266NC2NGDR	SafeSite Floodlight 11205 Lumens, 109 Watts, 100-277V AC, Cool White, NEMA 6, Clear Tempered Glass Lens, Drilling rig accessories kit [CID2]
Floodlight	SafeSite®	FLD76B5ANTNNGN	FLD266NC5NG	SafeSite Floodlight 11250 Lumens, 113 Watts, 347-480 VAC, Cool White, NEMA 6, Clear Tempered Glass Lens, [CID2]
Floodlight	SafeSite®	FLD77B2ANTNNGN	FLD276NC2NG	SafeSite Floodlight 11500 Lumens, 106 Watts, 100-277 VAC, Cool White, NEMA 7x6, Clear Tempered Glass Lens, [CID2]
Floodlight	SafeSite®	FLD77B5ANTNNGN	FLD276NC5NG	SafeSite Floodlight 11750 Lumens, 112 Watts, 347-480 VAC, Cool White, NEMA 7x6, Clear Tempered Glass Lens, [CID2]
Floodlight	SafeSite®	FLD76B2BNTNNGN	FLD466NC4NG	SafeSite Floodlight 15000 Lumens, 135 Watts, 100-277 VAC, Cool White, NEMA 6, Clear Tempered Glass Lens, [CID2]
Floodlight	SafeSite®	FLD76B2BNBRNGN	FLD466NC4NGDR	SafeSite Floodlight 15000 Lumens, 130 Watts, 100-277V, Cool White, NEMA 6, Clear Tempered Glass Lens, Drilling rig accessories kit [CID2]
Floodlight	SafeSite®	FLD76B5BNTNNGN	FLD466NC5NG	SafeSite Floodlight 15000 Lumens, 135 Watts, 347-480 VAC, Cool White, NEMA 6, Clear Tempered Glass Lens, [CID2]
Floodlight	SafeSite®	FLD77B2BNTNNGN	FLD476NC4NG	SafeSite Floodlight 14750 Lumens, 135 Watts, 100-277 VAC, Cool White, NEMA 7x6, Clear Tempered Glass Lens, [CID2]
Floodlight	DuroSite®	FLU77B2BNTNNGN	FLW476NC4NG	DuroSite Floodlight 15000 Lumens, 140 Watts, 100-277V, Cool White, NEMA 7x6, Clear Tempered Glass Lens
Floodlight	DuroSite®	FLU76B2BNTNNGN	FLW466NC4NG	DuroSite Floodlight, NEMA 6, 15,000 Lumens, 135 Watts, 100 - 277 VAC, Cool White 5000K, Glass - Clear, 304 SS Swivel Brkt, Gray, [UL 1598/A]
Floodlight	DuroSite®	FLU76B5BNTNNGN	FLW466NC5NG	DuroSite Floodlight, NEMA 6, 15,000 Lumens, 135 Watts, 347/480 VAC, Cool White 5000K, Glass - Clear, 304 SS Swivel Brkt, Gray, [UL 1598/A]
Floodlight	DuroSite®	FLU76B2ANTNNGN	FLW266NC2NG	DuroSite Floodlight, NEMA 6, 11,250 Lumens, 106 Watts, 100 - 277 VAC, Cool White 5000K, Glass - Clear, 304 SS Swivel Brkt, Gray, [UL 1598/A]
Floodlight	DuroSite®	FLU76B5ANTNNGN	FLW266NC5NG	DuroSite Floodlight, NEMA 6, 11,250 Lumens, 112 Watts, 347/480 VAC, Cool White 5000K, Glass - Clear, 304 SS Swivel Brkt, Gray, [UL 1598/A]
Floodlight	DuroSite®	FLU77B2ANTNNGN	FLW276NC2NG	DuroSite Floodlight, NEMA 7x6, 11,500 Lumens, 106 Watts, 100 - 277 VAC, Cool White 5000K, Glass - Clear, 304 SS Swivel Brkt, Gray, [UL 1598/A]
Floodlight	DuroSite®	FLU77B5ANTNNGN	FLW276NC5NG	DuroSite Floodlight 11750 Lumens, 112 Watts, 347-480 VAC, Cool White, NEMA 7x6, Clear Tempered Glass Lens

DISCLAIMER. All product information provided is, to the best of Dialight's knowledge, accurate as of the date of publication. When ordering, refer to www.dialight.com for current versions of: (a) relevant product documentation (including the relevant product data sheets); (b) Dialight terms and conditions of sale; and, (c) the relevant product warranty. To the extent that any contract is deemed formed between Dialight and the purchaser of Dialight products and/or an end-user, versions of documents available at www.dialight.com as at the date of sale shall be the versions incorporated therein. In the event of any discrepancy between this document or information provided at www.dialight.com, the latter shall prevail.

DISCLAIMER. All product information provided is, to the best of Dialight's knowledge, accurate as of the date of publication. When ordering, refer to www.dialight.com for current versions of: (a) relevant product documentation (including the relevant product data sheets); (b) Dialight terms and conditions of sale; and, (c) the relevant product warranty. To the extent that any contract is deemed formed between Dialight and the purchaser of Dialight products and/or an end-user, versions of documents available at www.dialight.com as at the date of sale shall be the versions incorporated therein. In the event of any discrepancy between this document or information provided at www.dialight.com, the latter shall prevail.

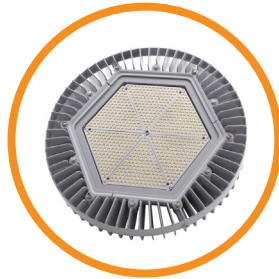
Dialight LED Floodlight
Accessories
Stock Part Numbers



Product	Brand	Part Number	Description
Floodlight	Accessory	FLX1HBXSS	304 Stainless steel forward throw bracket
Floodlight	Accessory	FLX1RAB20DB	Right Angle Bracket, 2"
Floodlight	Accessory	FLX1RAB20LG	Right Angle Bracket, 2"
Floodlight	Accessory	FLX1TPT20DB	Tenon topper, pole set screws, and mounting hardware
Floodlight	Accessory	FLX1TPT20LG	Tenon topper, pole set screws, and mounting hardware, Gray
Floodlight	Accessory	FLX2LBH20DB	2 Light Bull Horn Bracket
Floodlight	Accessory	FLX2LBH20LG	2 Light Bull Horn Brkt, Gray
Floodlight	Accessory	FLX2RSR20DB	2 Light Round Square Round Bracket
Floodlight	Accessory	FLX3LBH20DB	3 Light Bull Horn Bracket
Floodlight	Accessory	FLX3RPA20DB	Reducer for 3" OD round pole top
Floodlight	Accessory	FLX3RSR20DB	3 Light Round Square Round Bracket
Floodlight	Accessory	FLX4LBH20DB	4 Light Bull Horn Bracket
Floodlight	Accessory	FLX4RBH20DB	4 Light Bull Horn Bracket in Star Configuration
Floodlight	Accessory	FLX4RPA20DB	Reducer for 4" OD round pole top
Floodlight	Accessory	FLX4SPA20DB	Internal tenon adapter for 4" square pole top
Floodlight	Accessory	FLX5SPA20DB	Internal tenon adapter for 5" square pole top
Floodlight	Accessory	FLX6SPA20DB	Internal tenon adapter for 6" square pole top

DISCLAIMER. All product information provided is, to the best of Dialight's knowledge, accurate as of the date of publication. When ordering, refer to www.dialight.com for current versions of: (a) relevant product documentation (including the relevant product data sheets); (b) Dialight terms and conditions of sale; and, (c) the relevant product warranty. To the extent that any contract is deemed formed between Dialight and the purchaser of Dialight products and/or an end-user, versions of documents available at www.dialight.com as at the date of sale shall be the versions incorporated therein. In the event of any discrepancy between this document or information provided at www.dialight.com, the latter shall prevail.

Dialight LED High Bay
Stock Part Numbers

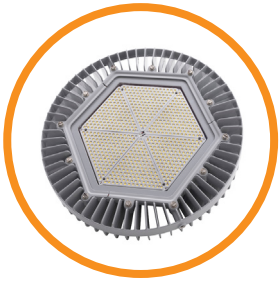


Product	Brand	Platform Part Number	Legacy Part Number	Description
High Bay	SafeSite®	HEC7WC2CNWWNGN	HEC9RC4KNSSGDFS	SafeSite High Bay, Wide, 16000 Lumens, 129 Watts, 100 - 277 VAC, Cool White 5000K, Glass - Clear, Gray, Safety Retention Tabs with Forward Throw Bracket - 316 SS, 10' [3 meter] Power Cable, [UL 844 Class I Div. 1]
High Bay	SafeSite®	HED7MC2ANNWNGN	HEDGMC4DNSNG	SafeSite High Bay, Medium, 11250 Lumens, 80 Watts, 100 - 277 VAC, Cool White 5000K, Glass - Clear, Gray, 10' [3 meter] Power Cable, [UL 844 Class I Div. 2]
High Bay	SafeSite®	HED7MC2BNNWNGN	HEDGMC4GNSNG	SafeSite High Bay, Medium, 14250 Lumens, 102 Watts, 100 - 277 VAC, Cool White 5000K, Glass - Clear, Gray, 10' [3 meter] Power Cable, [UL 844 Class I Div. 2]
High Bay	SafeSite®	HED7MC2CNNWNGN	HEDGMC4KNSNG	SafeSite High Bay, Medium, 19500 Lumens, 129 Watts, 100 - 277 VAC, Cool White 5000K, Glass - Clear, Gray, 10' [3 meter] Power Cable, [UL 844 Class I Div. 2]
High Bay	SafeSite®	HED7MC2ENNWNGN	HEDGMC4PNSNG	SafeSite High Bay, Medium, 26250 Lumens, 186 Watts, 100 - 277 VAC, Cool White 5000K, Glass - Clear, Gray, 10' [3 meter] Power Cable, [UL 844 Class I Div. 2]
High Bay	Vigilant®	HEU7MC2CNNWNGN	HEGMC4KNSNG	Vigilant High Bay, Medium, 19500 Lumens, 129 Watts, 100 - 277 VAC, Cool White 5000K, Glass - Clear, Gray, 10' [3 meter] Power Cable, [UL 1598/A]
High Bay	Vigilant®	HEULMC2ANNWNGN	HELMC4DNSNG	Vigilant High Bay, Medium, 10250 Lumens, 80 Watts, 100 - 277 VAC, Cool White 5000K, Polycarbonate Dome - Diffused, Gray, 10' [3 meter] Power Cable, [UL 1598/A]
High Bay	Vigilant®	HEULMC2BNNWNGN	HELMC4GNSNG	Vigilant High Bay, Medium, 13250 Lumens, 102 Watts, 100 - 277 VAC, Cool White 5000K, Polycarbonate Dome - Diffused, Gray, 10' [3 meter] Power Cable, [UL 1598/A]
High Bay	Vigilant®	HEULMC2CNNWNGN	HELMC4KNSNG	Vigilant High Bay, Medium, 18000 Lumens, 129 Watts, 100 - 277 VAC, Cool White 5000K, Polycarbonate Dome - Diffused, Gray, 10' [3 meter] Power Cable, [UL 1598/A]
High Bay	Vigilant®	HEU7MCPCNNWNGN	HEGMCPKNSNG	Vigilant High Bay, Medium, 18000 Lumens, 129 Watts, 480 VAC Passive Driver (Non Dimmable), Cool White 5000K, Glass - Clear, Gray, 10' [3 meter] Power Cable, [UL 1598/A]
High Bay	Vigilant®	HEU7MCPENNWNGN	HEGMCPPNSNG	Vigilant High Bay, Medium, 27000 Lumens, 206 Watts, 480 VAC Passive Driver (Non Dimmable), Cool White 5000K, Glass - Clear, Gray, 10' [3 meter] Power Cable, [UL 1598/A]
High Bay	Vigilant®	HEU7MC2ANNWNGN	HEGMC4DNSNG	Vigilant High Bay, Medium, 11250 Lumens, 80 Watts, 100 - 277 VAC, Cool White 5000K, Glass - Clear, Gray, 10' [3 meter] Power Cable, [UL 1598/A]
High Bay	Vigilant®	HEU7MC2BNNWNGN	HEGMC4GNSNG	Vigilant High Bay, Medium, 14250 Lumens, 102 Watts, 100 - 277 VAC, Cool White 5000K, Glass - Clear, Gray, 10' [3 meter] Power Cable, [UL 1598/A]
High Bay	Vigilant®	HEU7MC2ENNWNGN	HEGMC4PNSNG	Vigilant High Bay, Medium, 26250 Lumens, 186 Watts, 100 - 277 VAC, Cool White 5000K, Glass - Clear, Gray, 10' [3 meter] Power Cable, [UL 1598/A]
High Bay	Vigilant®	HEULMC2ENNWNGN	HELMC4PNSNG	Vigilant High Bay, Medium, 24500 Lumens, 186 Watts, 100 - 277 VAC, Cool White 5000K, Polycarbonate Dome - Diffused, Gray, 10' [3 meter] Power Cable, [UL 1598/A]
High Bay	Vigilant®	HEU4MC2ANNWNGN		Vigilant High Bay, Medium, 10750 Lumens, 80 Watts, 100 - 277 VAC, Cool White 5000K, Polycarbonate - Clear, Gray, 10' [3 meter] Power Cable, [UL 1598/A]
High Bay	Vigilant®	HEU4MC2BNNWNGN		Vigilant High Bay, Medium, 13750 Lumens, 102 Watts, 100 - 277 VAC, Cool White 5000K, Polycarbonate - Clear, Gray, 10' [3 meter] Power Cable, [UL 1598/A]
High Bay	Vigilant®	HEU4MC2CNNWNGN		Vigilant High Bay, Medium, 18750 Lumens, 129 Watts, 100 - 277 VAC, Cool White 5000K, Polycarbonate - Clear, Gray, 10' [3 meter] Power Cable, [UL 1598/A]
High Bay	Vigilant®	HEU4MC2ENNWNGN		Vigilant High Bay, Medium, 25250 Lumens, 186 Watts, 100 - 277 VAC, Cool White 5000K, Polycarbonate - Clear, Gray, 10' [3 meter] Power Cable, [UL 1598/A]

DISCLAIMER. All product information provided is, to the best of Dialight's knowledge, accurate as of the date of publication. When ordering, refer to www.dialight.com for current versions of: (a) relevant product documentation (including the relevant product data sheets); (b) Dialight terms and conditions of sale; and, (c) the relevant product warranty. To the extent that any contract is deemed formed between Dialight and the purchaser of Dialight products and/or an end-user, versions of documents available at www.dialight.com as at the date of sale shall be the versions incorporated therein. In the event of any discrepancy between this document or information provided at www.dialight.com, the latter shall prevail.

Dialight LED High Bay Accessories

Stock Part Numbers

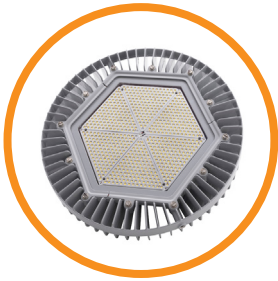


Product	Brand	Part Number	Description
High Bay	Accessory	HBXCAB120K	FORD SAFETY CABLE 120" KC
High Bay	Accessory	HBXCAB48	Accessory - Safety Cables 48"
High Bay	Accessory	HBXCG	High Bay Cable Gland
High Bay	Accessory	HBXCU	High Bay Ceiling Mount
High Bay	Accessory	HBXC1	High Bay Ceiling Mount
High Bay	Accessory	HBXDC	High Bay Dust Cover
High Bay	Accessory	HBXDC45	High Bay Dust Cover, 45 slope
High Bay	Accessory	HBXDUALBRCKT	High Bay Dual Bracket
High Bay	Accessory	HBXFSIRREMOTE	OCC Sensor Remote Control
High Bay	Accessory	HBXGS	High Bay Glare Shield
High Bay	Accessory	HBXH	High Bay Hook
High Bay	Accessory	HBX-HL	High Bay Hook and Loop
High Bay	Accessory	HBXL	High Bay Loop
High Bay	Accessory	HBXLENGC	High Bay Clear Tempered Glass
High Bay	Accessory	HBXSB	High Bay Safety Bracket Kit 316 SS (4)
High Bay	Accessory	HBXSBDK	LED Highbay Domed Sand Blast Cover
High Bay	Accessory	HBXTH347480	High Bay Accessory Top Hat 347/480V
High Bay	Accessory	HBXTH347480B	High Bay Accessory Top Hat 347/480V
High Bay	Accessory	HBXW1	High Bay Wall Mount

DISCLAIMER. All product information provided is, to the best of Dialight's knowledge, accurate as of the date of publication. When ordering, refer to www.dialight.com for current versions of: (a) relevant product documentation (including the relevant product data sheets); (b) Dialight terms and conditions of sale; and, (c) the relevant product warranty. To the extent that any contract is deemed formed between Dialight and the purchaser of Dialight products and/or an end-user, versions of documents available at www.dialight.com as at the date of sale shall be the versions incorporated therein. In the event of any discrepancy between this document or information provided at www.dialight.com, the latter shall prevail.

Dialight LED High Bay Accessories

Stock Part Numbers Continued

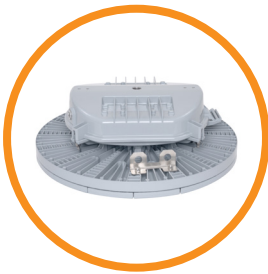


Product	Brand	Part Number	Description
High Bay	Accessory	HBXW2	High Bay Swivel Bracket and Cable Gland
High Bay	Accessory	HBXW3	High Bay Swivel Bracket
High Bay	Accessory	HBXW3SSL316	Stainless steel swivel bracket, 316
High Bay	Accessory	HBXW3SSL316FT	Forward Throw Stainless steel swivel bracket, 316
High Bay	Accessory	HBXW3SSL316M	Stainless Steel Swivel High Bay Bracket

DISCLAIMER. All product information provided is, to the best of Dialight's knowledge, accurate as of the date of publication. When ordering, refer to www.dialight.com for current versions of: (a) relevant product documentation (including the relevant product data sheets); (b) Dialight terms and conditions of sale; and, (c) the relevant product warranty. To the extent that any contract is deemed formed between Dialight and the purchaser of Dialight products and/or an end-user, versions of documents available at www.dialight.com as at the date of sale shall be the versions incorporated therein. In the event of any discrepancy between this document or information provided at www.dialight.com, the latter shall prevail.

Dialight LED High Output High Bay - Low Profile

Stock Part Numbers



Product	Brand	Part Number	Description
H7 High Output	Vigilant®	H7U7NCDNDNNNGN	Vigilant High Output High Bay - Low Profile, Narrow, 61200 Lumens, 427 Watts, 480 VAC Step Down Transformer Driver, Cool White 5000K, Glass - Clear, Gray, Dimming (0-10V), [UL 1598 / UL 1598/A]
H7 High Output	Vigilant®	H7U7NC2NDNNNGN	Vigilant High Output High Bay - Low Profile, Narrow, 61200 Lumens, 418 Watts, 120 - 277 VAC Integrated Driver, Cool White 5000K, Glass - Clear, Gray, Dimming (0-10V), [UL 1598 / UL 1598/A]
H7 High Output	Vigilant®	H7U7MCDKDNNGN	Vigilant High Output High Bay - Low Profile, Medium, 46,000 Lumens, 308 Watts, 480 VAC Step Down Transformer Driver, Cool White 5000K, Glass - Clear, Gray, Dimming (0-10V), [UL 1598 / UL 1598/A]

Dialight LED High Output High Bay Accessories

Stock Part Numbers



Product	Brand	Part Number	Description
H6 High Output	Accessory	H6XH	Vigilant 60K/45K Wet Location Hook
H6 High Output	Accessory	H6XCAB72	Accessory - 72" Stainless Steel Safety Rope (Gen II 60K)

DISCLAIMER. All product information provided is, to the best of Dialight's knowledge, accurate as of the date of publication. When ordering, refer to www.dialight.com for current versions of: (a) relevant product documentation (including the relevant product data sheets); (b) Dialight terms and conditions of sale; and, (c) the relevant product warranty. To the extent that any contract is deemed formed between Dialight and the purchaser of Dialight products and/or an end-user, versions of documents available at www.dialight.com as at the date of sale shall be the versions incorporated therein. In the event of any discrepancy between this document or information provided at www.dialight.com, the latter shall prevail.

Dialight LED Reliant™ High Bay Accessories

Stock Part Numbers



Product	Brand	Part Number	Description
Reliant High Bay	Accessory	RHCHAIN3	Jack Chain Kit (separate)- 36" (pair)
Reliant High Bay	Accessory	RHCHAIN4	Jack Chain Kit (separate) - 48" (pair)
Reliant High Bay	Accessory	RHCHAIN6	Jack Chain Kit (separate) - 72" (pair)
Reliant High Bay	Accessory	RHMCAB10	Mounting cable (separate kit) - 10 foot (pair)
Reliant High Bay	Accessory	RHMCAB15	Mounting cable (separate kit) - 15 foot (pair)
Reliant High Bay	Accessory	RHMCAB20	Mounting cable (separate kit) - 20 foot (pair)
Reliant High Bay	Accessory	RHPENDANTBRKT	Pendant Mount - Conduit (not installed)
Reliant High Bay	Accessory	RHUPLCWB	2.4k CW Uplight accessory kit (2x modules)
Reliant High Bay	Accessory	RHUPLCWC	3.6k CW Uplight accessory kit (2x modules)
Reliant High Bay	Accessory	RHUPLNWB	2.4k NW Uplight accessory kit (2x modules)
Reliant High Bay	Accessory	RHUPLNWC	3.6k NW Uplight accessory kit (2x modules)
Reliant High Bay	Accessory	RHMHANGER	V Hangers (pair, not installed)
Reliant High Bay	Accessory	RHWIRELESS1	IntelliLED Wireless Controls - Basic
Reliant High Bay	Accessory	RHWSOCC212	Wattstopper FSP-212 occupancy sensor (center mounted)
Reliant High Bay	Accessory	RHWSOCC321	Wattstopper FSP-321 occupancy sensor (center mounted)

DISCLAIMER. All product information provided is, to the best of Dialight's knowledge, accurate as of the date of publication. When ordering, refer to www.dialight.com for current versions of: (a) relevant product documentation (including the relevant product data sheets); (b) Dialight terms and conditions of sale; and, (c) the relevant product warranty. To the extent that any contract is deemed formed between Dialight and the purchaser of Dialight products and/or an end-user, versions of documents available at www.dialight.com as at the date of sale shall be the versions incorporated therein. In the event of any discrepancy between this document or information provided at www.dialight.com, the latter shall prevail.

Dialight LED Low Bay

Stock Part Numbers



Product	Brand	Platform Part Number	Legacy Part Number	Description
Low Bay	SafeSite®	LEDLUC29NNWNGN		SafeSite Low Bay, Ultra Wide, 9000 Lumens, 80 Watts, 100 - 277 VAC, Cool White 5000K, Polycarbonate Dome - Diffused, Gray, 10' [3 meter] Power Cable, [UL 844 Class I Div. 2]
Low Bay	Vigilant®	LEULUC29NNWNGN	HBWC4L	Vigilant Low Bay, Ultra Wide, 9000 Lumens, 80 Watts, 100 - 277 VAC, Cool White 5000K, Polycarbonate Dome - Diffused, Gray, 10' [3 meter] Power Cable, [UL 1598/A]
Low Bay	Vigilant®	LEULUC24NNWNGN	LBW1C1A	Vigilant Low Bay, Ultra Wide, 4000 Lumens, 42 Watts, 100 - 277 VAC, Cool White 5000K, Polycarbonate Dome - Diffused, Gray, 10' [3 meter] Power Cable, [UL 1598/A]
Low Bay	Vigilant®	LEULUC26NNWNGN	LBW1C1D	Vigilant Low Bay, Ultra Wide, 6000 Lumens, 56 Watts, 100 - 277 VAC, Cool White 5000K, Polycarbonate Dome - Diffused, Gray, 10' [3 meter] Power Cable, [UL 1598/A]
Low Bay	Vigilant®	LEULUN29NNWNGN		Vigilant Low Bay, Ultra Wide, 8750 Lumens, 80 Watts, 100 - 277 VAC, Neutral White 4000K, Polycarbonate Dome - Diffused, Gray, 10' [3 meter] Power Cable, [UL 1598/A]

Dialight LED Low Bay

Accessories

Stock Part Numbers

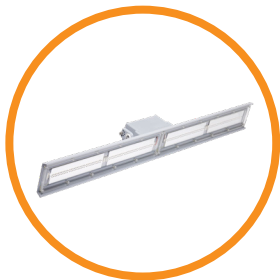


Product	Brand	Part Number	Description
Low Bay	Accessory	LBXLENP	Low Bay Dome Lens

DISCLAIMER. All product information provided is, to the best of Dialight's knowledge, accurate as of the date of publication. When ordering, refer to www.dialight.com for current versions of: (a) relevant product documentation (including the relevant product data sheets); (b) Dialight terms and conditions of sale; and, (c) the relevant product warranty. To the extent that any contract is deemed formed between Dialight and the purchaser of Dialight products and/or an end-user, versions of documents available at www.dialight.com as at the date of sale shall be the versions incorporated therein. In the event of any discrepancy between this document or information provided at www.dialight.com, the latter shall prevail.

Dialight Hazardous Location LED Linears

Stock Part Numbers



Product	Brand	Legacy Part Number	Description
Linear	SafeSite®	LPD3C4B2W	SafeSite Linear - Low Profile, 3500 Lumens, 29 Watts, 100-277 VAC, Cool White 5000K, Diffused Polycarbonate Lens, [CID2]
Linear	SafeSite®	LPD3C4D2P	SafeSite Linear - Gen II, 3850 Lumens, 29 Watts, 100-277 VAC, Cool White 5000K, Clear Polycarbonate Lens, Low Profile [CID2]
Linear	SafeSite®	LPD3C4M2P	SafeSite Linear - Gen II, 7000 Lumens, 66 Watts, 100-277V AC, Cool White, Clear Polycarbonate Lens, Low Profile, Drilling rig accessories kit with LP bracket [CID2]
Linear	SafeSite®	LPD3C4M2PDR	SafeSite Linear - Gen II, 7000 Lumens, 66 Watts, 100-277V AC, Cool White, Clear Polycarbonate Lens, Low Profile, Drilling rig accessories kit [CID2]
Linear	SafeSite®	LPD3C4M2PDRWOB	SafeSite Linear - Gen II, 7000 Lumens, 66 Watts, 100-277V AC, Cool White, Clear Polycarbonate Lens, Low Profile, Drilling Rig, No Bracket [CID2]
Linear	SafeSite®	LSC3C4D3GEX	SafeSite Linear, 3600 Lumens, 34 Watts, 100-277 VAC, Cool White 5000K, Clear Tempered Glass Lens, 2 Feet [CID1]
Linear	SafeSite®	LSC3C4M3GEX	SafeSite Linear, 7250 Lumens, 68 Watts, 100-277 VAC, Cool White 5000K, Clear Tempered Glass Lens, 4 feet [CID1]
Linear	SafeSite®	LSC3C4M3GEXDR	SafeSite Linear, 7250 Lumens, 78 Watts, 100-277V AC, Cool White, Clear Tempered Glass Lens, 4 feet with drilling rig accessories [CID1]
Linear	SafeSite®	LTD3C4D2P	SafeSite Linear - Gen II, 3850 Lumens, 29 Watts, 100-277 VAC, Cool White 5000K, Polycarbonate Clear Lens, [CID2]
Linear	SafeSite®	LTD3C4M2P	SafeSite Linear - Gen II, 7900 Lumens, 60 Watts, 100-277 VAC, Cool White 5000K, Polycarbonate Clear Lens, [CID2]
Linear	SafeSite®	LTD3C4M2PDR	SafeSite Linear - Gen II, 7000 Lumens, 66 Watts, 100-277V AC, Cool White, Polycarbonate Clear Lens, Drilling rig accessories kit [CID2]

DISCLAIMER. All product information provided is, to the best of Dialight's knowledge, accurate as of the date of publication. When ordering, refer to www.dialight.com for current versions of: (a) relevant product documentation (including the relevant product data sheets); (b) Dialight terms and conditions of sale; and, (c) the relevant product warranty. To the extent that any contract is deemed formed between Dialight and the purchaser of Dialight products and/or an end-user, versions of documents available at www.dialight.com as at the date of sale shall be the versions incorporated therein. In the event of any discrepancy between this document or information provided at www.dialight.com, the latter shall prevail.

Dialight Non-Hazardous Location LED Linears

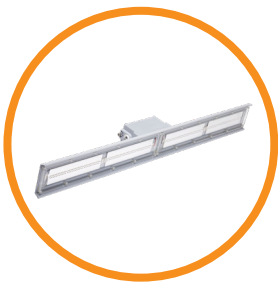
Stock Part Numbers



Product	Brand	Legacy Part Number	Description
Linear	DuroSite®	LTM3C4H2W	DuroSite Linear - Top Conduit, Medium, 7100 Lumens, 60 Watts, 100-277 VAC, Cool White, Diffused Polycarbonate Lens
Linear	DuroSite®	LPM3C4H2W	DuroSite Linear - Low Profile, Medium, 7100 Lumens, 60 Watts, 100-277 VAC, Cool White, Diffused Polycarbonate Lens
Linear	DuroSite®	LPM3C4D2P	DuroSite Linear - Low Profile, Medium, 3850 Lumens, 29 Watts, 100-277 VAC, Cool White, Clear Polycarbonate Lens
Linear	DuroSite®	LPM3C4M2P	DuroSite Linear - Low Profile, Medium, 7900 Lumens, 60 Watts, 100-277 VAC, Cool White, Clear Polycarbonate Lens
Linear	DuroSite®	LTM3C4D2P	DuroSite Linear - Top Conduit, Medium, 3850 Lumens, 29 Watts, 100-277 VAC, Cool White, Clear Polycarbonate Lens
Linear	DuroSite®	LTM3C4M2P	DuroSite Linear - Top Conduit, Medium, 7900 Lumens, 60 Watts, 100-277 VAC, Cool White, Clear Polycarbonate Lens

Dialight LED Linear Accessories

Stock Part Numbers



Product	Brand	Part Number	Description
Linear	Accessory	LPXW4	Mounting bracket. Can be angled at 0, 30, 45, 60 and 90 degrees.
Linear	Accessory	LPXW4LP	Low profile mounting bracket. Can be angled at 0 and 15 degrees.
Linear	Accessory	LSXENDCAPKIT	Accessory- Chain mount brackets with 2 mounting brackets and hardware
Linear	Accessory	LSXW4	Accessory- Mounting brackets for 0, 30, 45, 60 or 90 degrees with mounting bracket and mounting hardware, CID2
Linear	Accessory	LSXW5	Accessory- Mounting brackets for 0, 30, 45, 60 or 90 degrees with mounting bracket and mounting hardware, CID
Linear	Accessory	LTXENDCAPKIT	Accessory- Chain mount brackets with 2 mounting brackets and hardware
Linear	Accessory	LTXLENPD	Accessory - Clear Poly Replacement lens
Linear	Accessory	LTXSAFEKIT	Accessory - LIN II END CAP SAFETY CABLES
Linear	Accessory	LTXW4	Accessory- Mounting brackets for 0, 30, 45, 60 or 90 degrees with mounting bracket and mounting hardware
Linear	Accessory	LTXW4LP	Accessory - Mounting Bracket, 0 or 15 degrees, Low Profile
Linear	Accessory	LTX8FTENDCAP	End to end linear mounting kit

DISCLAIMER. All product information provided is, to the best of Dialight's knowledge, accurate as of the date of publication. When ordering, refer to www.dialight.com for current versions of: (a) relevant product documentation (including the relevant product data sheets); (b) Dialight terms and conditions of sale; and, (c) the relevant product warranty. To the extent that any contract is deemed formed between Dialight and the purchaser of Dialight products and/or an end-user, versions of documents available at www.dialight.com as at the date of sale shall be the versions incorporated therein. In the event of any discrepancy between this document or information provided at www.dialight.com, the latter shall prevail.

DISCLAIMER. All product information provided is, to the best of Dialight's knowledge, accurate as of the date of publication. When ordering, refer to www.dialight.com for current versions of: (a) relevant product documentation (including the relevant product data sheets); (b) Dialight terms and conditions of sale; and, (c) the relevant product warranty. To the extent that any contract is deemed formed between Dialight and the purchaser of Dialight products and/or an end-user, versions of documents available at www.dialight.com as at the date of sale shall be the versions incorporated therein. In the event of any discrepancy between this document or information provided at www.dialight.com, the latter shall prevail.

North American HQ

1501 Route 34 South
Farmingdale, NJ 07727

Tel: 732-919-3119

Fax: 732-751-5778

info@dialight.com



WARNING / DISCLAIMERS:

Installation & secondary retention. The use of these products without proper installation (including secondary retention / netting) and periodic inspections, could cause severe injury or death. Dialight recommends that all installations should use secondary retention / netting (appropriate to the installation environment) as applicable. Dialight products are intended for ultimate purchase, installation and operation by knowledgeable persons trained in the functional assessment, installation, use and maintenance of such products and all customers (including but not limited to end customers) are responsible for assessing the suitability of Dialight products for any given installation requirement. It is the exclusive responsibility of the contractor, installer and/or end-user to: (a) determine the suitability of the product for its intended application; and, (b) ensure that the product is safely installed (with secondary retention / netting as appropriate) and in compliance with all applicable laws and regulations.

Product specifications & warranties. All product information provided is, to the best of Dialight's knowledge, accurate as of the date of publication. All values and performance data herein are design or typical values when measured under laboratory conditions. The information herein is subject to change without notice. The products / software detailed herein are subject to applicable warranties and terms and conditions of use/purchase. Unless agreed otherwise in writing by an authorized representative of Dialight, Dialight does not represent that its products are fit for any particular purpose and accepts no liability for the installation and/or unauthorised use of its products. When ordering, refer to www.dialight.com for current versions of: (a) relevant product documentation (including relevant product data sheets); (b) Dialight terms and conditions of sale; and, (c) the relevant product warranties. To the extent that any contract is deemed formed between Dialight and the purchaser of Dialight products and/or an end-user, versions of documents available at www.dialight.com as at the date of sale shall be the versions incorporated therein. In the event of any discrepancy between this document and information provided at www.dialight.com, the latter shall prevail.

Exclusion of liability. To the extent permissible under the relevant law, Dialight disclaims all liability for personal injury and/or other damage resulting from any dislodgment or other dislocation of its products. Whilst Dialight has used its reasonable endeavours to ensure the completeness and accuracy of information herein, Dialight does not assume any liability for damages resulting from use of this information or for any third-party representations made in relation to Dialight products.