

Dialight



Dialight® LED GRP Linear - ATEX / IECEx Technical Specification Sheet - EMEA



FEBRUARY 2021

SafeSite® LED GRP Linear

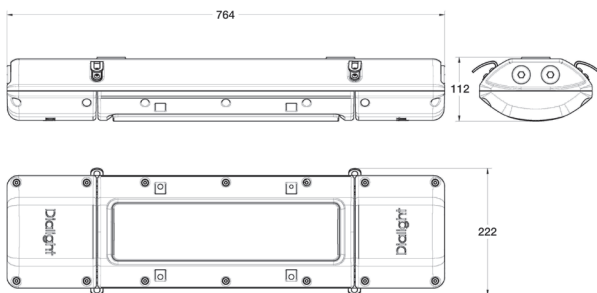
ATEX / IECEx



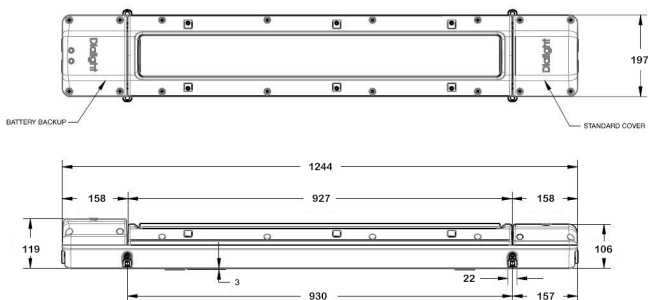
Certifications & Ratings

- 10 year warranty
- CE
- IP66/67
- ATEX/IECEx Zone 1, 2, 21 & 22
 - Ex II 2 GD
 - Ex eb mb op is IIC T4 Gb
 - Ex tb op is IIIC T130°C Db
 - Certification numbers:
 - Sira 19ATEX4226X
 - IECEx SIR 19.0068X
- ATEX/IECEx Zones 2, 21 & 22
 - Ex II 3 GD
 - Ex ec IIC T4 Gc
 - Ex tc IIIC T130°C Dc
 - Sira 19ATEX4227X
 - IECEx SIR 19.0069X
 - Ex II 2 D
 - Ex tb op is IIIC T130°C Db
 - Sira 19ATEX9228X
 - IECEx SIR 19.0069X
- DALI 1.0/2.0 as standard
- Up to 2,875 & 5,750 (nominal) lumen outputs
- Available in 764 mm & 1244 mm models
- Wireless controls available on select models (Zone 2 models only, please consult factory)

764 mm Model



1244 mm Model



Dimensions in mm

WARNING - INSTALLATION & SECONDARY RETENTION. Use of any Dialight products without proper installation (including secondary retention / netting) and periodic inspections could cause severe injury or death. Dialight recommends that all installations should use secondary retention / netting (appropriate to the installation environment) where applicable. It is the exclusive responsibility of the contractor, installer and/or end-user to: (a) determine the suitability of the product for its intended application; and, (b) ensure that the product is safely installed (with secondary retention / netting where appropriate) and in compliance with all applicable laws and regulations. To the extent permissible under applicable laws, Dialight disclaims all liability for personal injury and/or other damage resulting from any dislodgment or other dislocation of its products.

Mechanical Information:

Fixture weights:

Standard models: 764 mm: 7.9 kg (17.4 lbs)
1244 mm: 10.9 kg (24 lbs)

Emergency models:

764 mm: 8.7 kg (19.2 lbs)
1244 mm: 11.9 kg (26.2 lbs)

Mounting:

(2) M8 fixing points
Other mounting options available

Cable entry:

(2) M25 cable entries at both ends, through wired as standard. Consult factory for other options

Impact rating:

IK 08

Safety Retention:

(4) 316 Stainless steel tabs as standard

Electrical Specifications:

Operating voltage:

Standard: 100-277 VAC, 50/60Hz
120-250 VDC

Emergency: 230/240 VAC, 50Hz

Operating temperature:

Standard models: -40°C to +65°C
Emergency models: -20°C to +50°C

Harmonics & emissions:

IEC 55015 (conducted & radiated)
IEC 61000-3-2
IEC 61000-3-3
IEC 61547

Transient protection:

IEC 61000-4-5
6 kV line-to-line & line-to-ground

Power factor:

> 0.9

Emergency Models:

Lumen output in EM mode: 10-25% of initial light output (depending on selected duration and length of fitting)

Expected battery life*:

4 years

Battery duration*:

180 min. (standard)
60/90 min. (optional, field-configurable)

Materials:

Housing:

Glass-reinforced polyester

Lens:

- Textured polycarbonate convex lens (standard)
- Textured flat glass lens (optional)

Photometric Information:

CRI:

80 minimum

CCT:

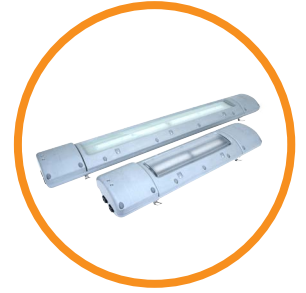
5000K (cool white)
4000K (neutral white)
Green LEDs for Shower Safe version

All values typical unless otherwise stated (tolerance +/- 10%)

* @ 25°C ambient

Ordering Information

SafeSite® LED GRP Linear - ATEX / IECEx

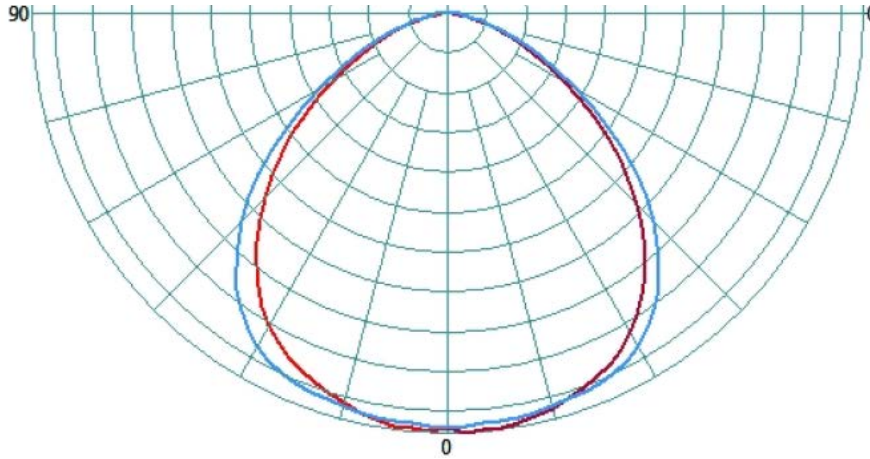


Part Number	Legacy Part Number	Fixture Lumens (Nominal)	Wattage	lm/W	Voltage	CCT	Lens
Zone 1, 2, 21 & 22 Models (Standard)							
P2ABMC23A54WGN		2,875	25	115	100-277 VAC/120-250 VDC	5000K (cool white)	Textured Polycarbonate
P4ABMC26A54WGN		5,750	47	123	100-277 VAC/120-250 VDC	5000K (cool white)	Textured Polycarbonate
P2ABMN23A54WGN		2,785	25	111	100-277 VAC/120-250 VDC	4000K (neutral white)	Textured Polycarbonate
P4ABMN26A54WGN		5,575	47	119	100-277 VAC/120-250 VDC	4000K (neutral white)	Textured Polycarbonate
Zone 2, 21 & 22 Models (Standard)							
P2BBMC23A54WGN	P2BBMC23A5NWGN	2,875	25	115	100-277 VAC/120-250 VDC	5000K (cool white)	Textured Polycarbonate
P4BBMC26A54WGN	P4BBMC26A5NWGN	5,750	47	123	100-277 VAC/120-250 VDC	5000K (cool white)	Textured Polycarbonate
P2BBMN23A54WGN	P2BBMN23A5NWGN	2,785	25	111	100-277 VAC/120-250 VDC	4000K (neutral white)	Textured Polycarbonate
P4BBMN26A54WGN	P4BBMN26A5NWGN	5,575	47	119	100-277 VAC/120-250 VDC	4000K (neutral white)	Textured Polycarbonate
Zone 1, 2, 21 & 22 Models (Emergency Backup)							
P2ABMCG3A54WGG		2,875	29	99	230/240 VAC	5000K (cool white)	Textured Polycarbonate
P4ABMCG6A54WGG		5,750	51	113	230/240 VAC	5000K (cool white)	Textured Polycarbonate
P2ABMNG3A54WGG		2,785	29	96	230/240 VAC	4000K (neutral white)	Textured Polycarbonate
P4ABMNG6A54WGG		5,575	51	109	230/240 VAC	4000K (neutral white)	Textured Polycarbonate
Zone 2, 21 & 22 Models (Emergency Backup)							
P2BBMCG3A54WGG	P2BBMCG3A5NWGF	2,875	29	99	230/240 VAC	5000K (cool white)	Textured Polycarbonate
P4BBMCG6A54WGG	P4BBMCG6A5NWGF	5,750	51	113	230/240 VAC	5000K (cool white)	Textured Polycarbonate
P2BBMNG3A54WGG	P2BBMNG3A5NWGF	2,785	29	96	230/240 VAC	4000K (neutral white)	Textured Polycarbonate
P4BBMNG6A54WGG	P4BBMNG6A5NWGF	5,575	51	109	230/240 VAC	4000K (neutral white)	Textured Polycarbonate
Shower-Safe/Eye-Wash Station Version - Zone 1, 2, 21 & 22 (Emergency Backup)							
P2ABMGG3A54WGG			29		230/240 VAC	Green	Textured Polycarbonate
P4ABMGG6A54WGG			51		230/240 VAC	Green	Textured Polycarbonate
Shower-Safe/Eye-Wash Station Version - Zone 2, 21 & 22 (Emergency Backup)							
P2BBMGG3A54WGG	P2BBMGG3A5NWGF		29		230/240 VAC	Green	Textured Polycarbonate
P4BBMGG6A54WGG	P4BBMGG6A5NWGF		51		230/240 VAC	Green	Textured Polycarbonate

All values typical unless otherwise stated (tolerance +/- 10%).

DISCLAIMER. All product information provided is, to the best of Dialight's knowledge, accurate as of the date of publication. When ordering, refer to www.dialight.com for current versions of: (a) relevant product documentation (including the relevant product data sheets); (b) Dialight terms and conditions of sale; and, (c) the relevant product warranty. To the extent that any contract is deemed formed between Dialight and the purchaser of Dialight products and/or an end-user, versions of documents available at www.dialight.com as at the date of sale shall be the versions incorporated therein. In the event of any discrepancy between this document or information provided at www.dialight.com, the latter shall prevail.

Beam Distribution



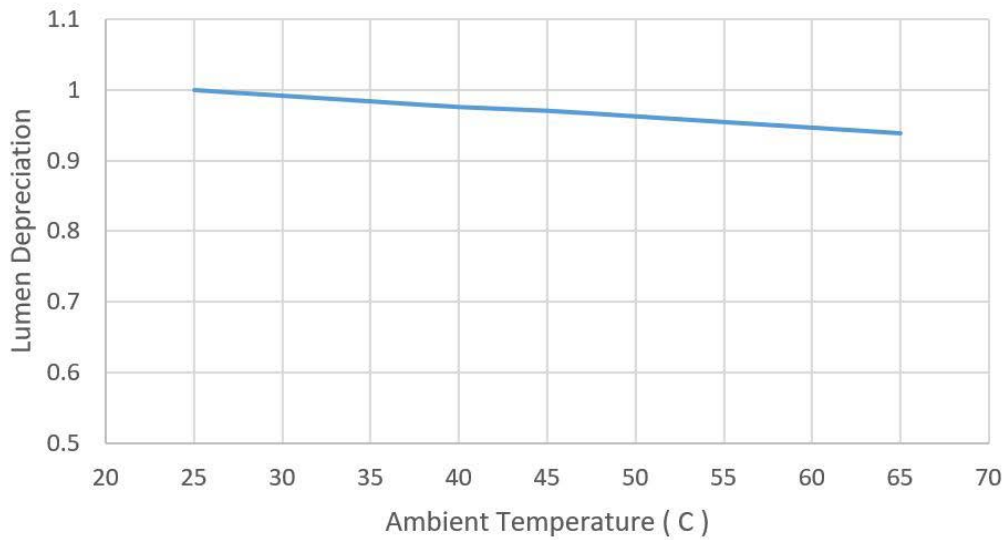
Inrush Current / Circuit Breakers

Length	Input Voltage	Inrush current @ input voltage	Approximate time duration (T50) of inrush current	Breaker Rating	10ms rating Type-B	10ms rating Type-C	Maximum number/breaker with 20% derating	
							Type B	Type C
764mm	120 VAC	8A	.5ms	10A	70A	100A	20	20
764mm	230 VAC	15A	.5ms	10A	70A	100A	20	20
764mm	277 VAC	18A	.5ms	10A	70A	100A	20	20
1244mm	120 VAC	8A	.5ms	10A	70A	100A	14	14
1244mm	230 VAC	15A	.5ms	10A	70A	100A	20	20
1244mm	277 VAC	18A	.5ms	10A	70A	100A	20	20

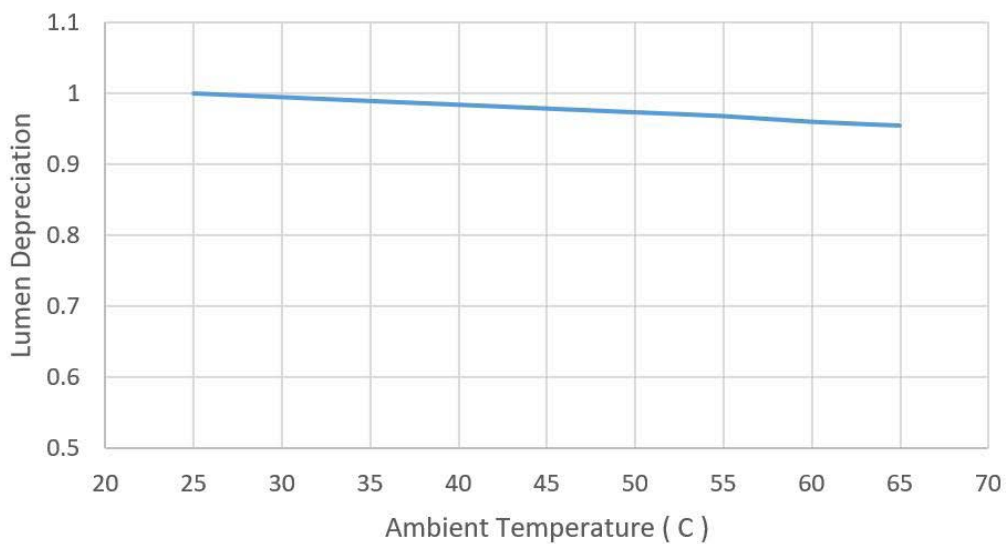
DISCLAIMER. All product information provided is, to the best of Dialight's knowledge, accurate as of the date of publication. When ordering, refer to www.dialight.com for current versions of: (a) relevant product documentation (including the relevant product data sheets); (b) Dialight terms and conditions of sale; and, (c) the relevant product warranty. To the extent that any contract is deemed formed between Dialight and the purchaser of Dialight products and/or an end-user, versions of documents available at www.dialight.com as at the date of sale shall be the versions incorporated therein. In the event of any discrepancy between this document or information provided at www.dialight.com, the latter shall prevail.

Thermal Roll-Off

Thermal Rolloff - GRP Linear, 764mm model



Thermal Rolloff - GRP Linear, 1244mm model



DISCLAIMER. All product information provided is, to the best of Dialight's knowledge, accurate as of the date of publication. When ordering, refer to www.dialight.com for current versions of: (a) relevant product documentation (including the relevant product data sheets); (b) Dialight terms and conditions of sale; and, (c) the relevant product warranty. To the extent that any contract is deemed formed between Dialight and the purchaser of Dialight products and/or an end-user, versions of documents available at www.dialight.com as at the date of sale shall be the versions incorporated therein. In the event of any discrepancy between this document or information provided at www.dialight.com, the latter shall prevail.

Lumen Maintenance Factor

764mm GRP Linear									
Ambient Temperature	Hours								
	0	15000	30000	45000	60000	75000	90000	100000	150000
25°C	100%	98%	96%	95%	94%	92%	91%	90%	86%
30°C	99%	97%	96%	94%	93%	92%	90%	89%	85%
35°C	98%	96%	95%	93%	92%	91%	90%	89%	85%
40°C	98%	95%	94%	93%	91%	90%	89%	88%	84%
45°C	97%	95%	94%	92%	91%	90%	88%	88%	84%
50°C	96%	94%	93%	91%	90%	89%	88%	87%	83%
55°C	96%	93%	92%	91%	89%	88%	87%	86%	82%
60°C	95%	92%	91%	90%	89%	87%	86%	85%	82%
65°C	94%	91%	90%	88%	87%	85%	84%	83%	78%

1244mm GRP Linear									
Ambient Temperature	Hours								
	0	15000	30000	45000	60000	75000	90000	100000	150000
25°C	100%	98%	96%	95%	94%	92%	91%	90%	86%
30°C	99%	97%	96%	94%	93%	92%	91%	90%	86%
35°C	99%	97%	95%	94%	93%	91%	90%	89%	85%
40°C	98%	96%	95%	93%	92%	91%	90%	89%	85%
45°C	98%	96%	94%	93%	92%	90%	89%	88%	84%
50°C	97%	95%	94%	92%	91%	90%	89%	88%	84%
55°C	97%	95%	93%	92%	91%	89%	88%	87%	83%
60°C	96%	94%	92%	91%	90%	89%	87%	87%	83%
65°C	96%	93%	92%	91%	89%	88%	87%	86%	82%

DISCLAIMER. All product information provided is, to the best of Dialight's knowledge, accurate as of the date of publication. When ordering, refer to www.dialight.com for current versions of: (a) relevant product documentation (including the relevant product data sheets); (b) Dialight terms and conditions of sale; and, (c) the relevant product warranty. To the extent that any contract is deemed formed between Dialight and the purchaser of Dialight products and/or an end-user, versions of documents available at www.dialight.com as at the date of sale shall be the versions incorporated therein. In the event of any discrepancy between this document or information provided at www.dialight.com, the latter shall prevail.

Accessories



ELX-CMB-SS

- 316 Marine Grade stainless steel ceiling mount kit



ELX-PC-SS-42

- 37-44mm Ø 316 Marine Grade stainless steel pole clamp



ELX-WMB-SS-45

- 45° 316 Marine Grade stainless steel wall mount kit



HBXCAB48

- 1.2m long stainless steel safety rope (for use with safety bracket)



ELX-PC-SS-47

- 44-50mm Ø 316 Marine Grade stainless steel pole clamp



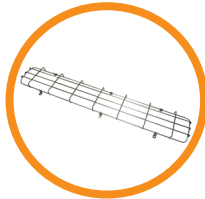
ELX-WMB-SS-60

- 60° 316 Marine Grade stainless steel wall mount kit



ELX-EYE-SS

- 316 Marine Grade stainless steel eyelet kit



RLX-WG-2

- Wire guard for 764mm model



RLX-BATT-KIT-2

- 764mm replacement battery kit



RLX-WG-4

- Wire guard for 1244mm model



RLX-BATT-KIT-4

- 1244mm replacement battery kit



RL-WIRELESS-2*

- Wireless controls kit for 764mm models (Zone 2 only)

*Must be fitted to GRP Linear by authorized Dialight personnel prior to delivery

DISCLAIMER. All product information provided is, to the best of Dialight's knowledge, accurate as of the date of publication. When ordering, refer to www.dialight.com for current versions of: (a) relevant product documentation (including the relevant product data sheets); (b) Dialight terms and conditions of sale; and, (c) the relevant product warranty. To the extent that any contract is deemed formed between Dialight and the purchaser of Dialight products and/or an end-user, versions of documents available at www.dialight.com as at the date of sale shall be the versions incorporated therein. In the event of any discrepancy between this document or information provided at www.dialight.com, the latter shall prevail.

Dialight Europe Ltd

Leaf C, Level 36, Tower 42
25 Old Broad Street
London, EC2N 1HQ, United Kingdom
Tel: +44 (0) 203 058 3540
Customer Service: +44 (0) 163 866 6541
sales-emea@dialight.com

Middle East

205, Clover Bay Tower,
Al Abraj Street, Business Bay
P.O. Box 123997 Dubai, U.A.E.
Tel: +971 (4) 818 31 56

WARNING / DISCLAIMERS:

Installation & secondary retention. The use of this product without proper installation (including secondary retention / netting) and periodic inspections, could cause severe injury or death. Dialight recommends that all installations should use secondary retention / netting (appropriate to the installation environment) as applicable. Dialight products are intended for ultimate purchase, installation and operation by knowledgeable persons trained in the functional assessment, installation, use and maintenance of such products and all customers (including but not limited to end customers) are responsible for assessing the suitability of Dialight products for any given installation requirement. It is the exclusive responsibility of the contractor, installer and/or end-user to: (a) determine the suitability of the product for its intended application; and, (b) ensure that the product is safely installed (with secondary retention / netting as appropriate) and in compliance with all applicable laws and regulations.

Product specifications & warranties. All product information provided is, to the best of Dialight's knowledge, accurate as of the date of publication. All values and performance data herein are design or typical values when measured under laboratory conditions. The information herein is subject to change without notice. The products / software detailed herein are subject to applicable warranties and terms and conditions of use/purchase. Unless agreed otherwise in writing by an authorized representative of Dialight, Dialight does not represent that its products are fit for any particular purpose and accepts no liability for the installation and/or unauthorised use of its products. When ordering, refer to www.dialight.com for current versions of: (a) relevant product documentation (including relevant product data sheets); (b) Dialight terms and conditions of sale; and, (c) the relevant product warranties. To the extent that any contract is deemed formed between Dialight and the purchaser of Dialight products and/or an end-user, versions of documents available at www.dialight.com as at the date of sale shall be the versions incorporated therein. In the event of any discrepancy between this document and information provided at www.dialight.com, the latter shall prevail.

Exclusion of liability. To the extent permissible under the relevant law, Dialight disclaims all liability for personal injury and/or other damage resulting from any dislodgment or other dislocation of its products. Whilst Dialight has used its reasonable endeavours to ensure the completeness and accuracy of information herein, Dialight does not assume any liability for damages resulting from use of this information or for any third-party representations made in relation to Dialight products.