



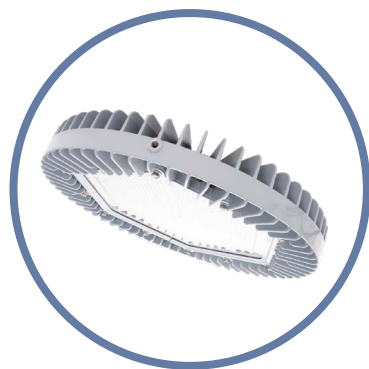
# Dialight Ultra-Efficient LED High Bay

## Technical Specification Sheet - Americas

## Vigilant® Ultra-Efficient LED High Bay - UL / CSA

### Technical Information

#### Corded Model



#### Mechanical Information:

**Fixture weight:**

18 lbs (8.16kg)

**Shipping weight:**

24 lbs (10.8kg)

**Mounting:**

3/4" NPT - top

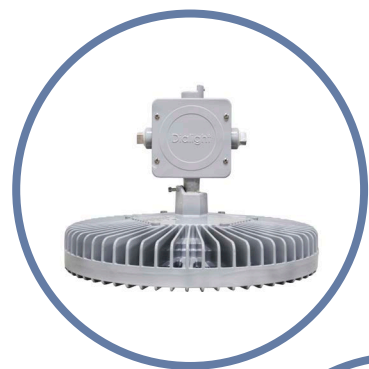
Various Kits

**Power Cord:**

10' 18 AWG STOOW / SOOW

Patent pending

#### Integrated Wiring Box Model



#### Mechanical Information:

**Fixture weight:**

20 lbs (9 kg)

**Shipping weight:**

26 lbs (12 kg)

**Mounting:**

3/4" NPT or Hook

**Wiring Box Cable Entries:**

(2x) 3/4" NPT



#### Certifications & Ratings:

10 year warranty

UL 1598/A

UL 8750

IP66/67

CSA C22.2 No. 250.0-08

NEMA 4X

L70 rated for >150,000 hours

#### Variable Dimming:

**Variable Dimming Control:** 0-10 VDC

**Dimming Range:**

10 VDC = 100% light output

0 VDC = <10% light output

#### Electrical Specifications:

**Operating Voltage:**

100-277 VAC, 120-250 VDC

347-480 VAC

**Total system power consumption:**

See table

**Operating Temp:**

-40°F to +149°F (-40°C to +65°C)

**Harmonics:**

IEC 61000-3-2 Class C

**Noise requirement /EMC:**

FCC Title 47, Subpart B, Section 15, class A device. RF Immunity; 10V/m, 80MHz-1GHz

**Transient protection:**

100-277 VAC models tested to withstand up to 8kV/4kA per IEEE C62.41.

347-480 VAC models tested to withstand up to 6kV/3kA per IEEE C62.41

**THD:**

<20%

**Power Factor:**

>0.9

**Fusing:**

Internal

#### Construction:

**Housing:**

Copper free aluminum

**Finish:**

Superior dual coat finish

Sealed polyester topcoat

Chemical-resistant epoxy primer

**Lens:**

See table

#### Photometric Information:

**CRI:**

80, 70

**CCT:**

5000K (cool white)

4000K (neutral white)

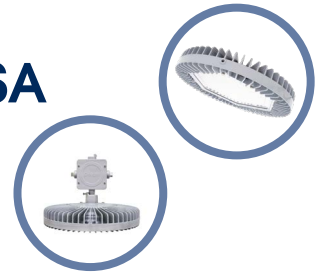
All values typical unless otherwise stated (tolerance +/- 10%)

Dimensions in inches (mm)

**WARNING - INSTALLATION & SECONDARY RETENTION.** Use of any Dialight products without proper installation (including secondary retention / netting) and periodic inspections could cause severe injury or death. Dialight recommends that all installations should use secondary retention / netting (appropriate to the installation environment) where applicable. It is the exclusive responsibility of the contractor, installer and/or end-user to: (a) determine the suitability of the product for its intended application; and, (b) ensure that the product is safely installed (with secondary retention / netting where appropriate) and in compliance with all applicable laws and regulations. To the extent permissible under applicable laws, Dialight disclaims all liability for personal injury and/or other damage resulting from any dislodgment or other dislocation of its products.

# Vigilant® Ultra-Efficient LED High Bay - UL / CSA

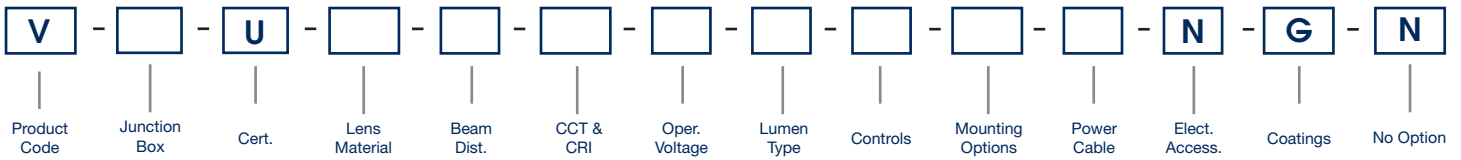
## Ordering Information



Project Information	
Part Number:	
Project:	
Fixture Type:	Date:

Specifications

### Ordering Information



<b>Product Code</b>	<b>CCT &amp; CRI</b>	<b>Controls</b>	<b>Electrical Accessories*</b>
V Vigilant® Ultra-Efficient	B Cool White 5000K - 70 CRI	D Continuous Dimming	N No Plug
	C Cool White 5000K - 80 CRI	J IntelliLED Wireless	*Cord & plug options available upon request
<b>Junction Box</b>	L Neutral White 4000K - 70 CRI	N No Option	
C Wiring Box	N Neutral White 4000K - 80 CRI	Q Microwave Occupancy Sensor 40'²	
E No Junction Box			
<b>Certification</b>	<b>Operating Voltage</b>	<b>Mounting Options</b>	<b>Coatings</b>
U UL 1598/A, CSA, NOM	2 100-277 VAC / 120-250 VDC	H Hook	G Gray (RAL 7040)
	5 347-480 VAC	N 3/4" NPT	
<b>Lens Material</b>	<b>Lumen Type¹</b>	P Secondary Retention Bracket	<b>Option</b>
4 Polycarbonate - Clear	A 12,100 Lumens		N No Option
7 Tempered Glass - Clear	B 15,000 Lumens		
L Polycarbonate Dome - Diffused	C 19,100 Lumens		
<b>Beam Distribution</b>	E 26,300 Lumens	<b>Power Cable</b>	
E Aisle	F 30,900 Lumens	N No Cord (Wiring Box only)	
M Medium	H 35,700 Lumens	W 10' [3 meter] Power Cable	
N Narrow	J 41,300 Lumens		
R High Efficacy Round			

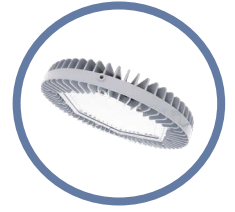
#### Notes

- 1) Lumen type based on using a glass lens, round optic, 70 CRI. See page 14 for output of other options.
- 2) Occupancy Sensor models are dry locations only and are IP6X rated with a -20°C to +65°C ambient temperature range.

**DISCLAIMER.** All product information provided is, to the best of Dialight's knowledge, accurate as of the date of publication. When ordering, refer to [www.dialight.com](http://www.dialight.com) for current versions of: (a) relevant product documentation (including the relevant product data sheets); (b) Dialight terms and conditions of sale; and, (c) the relevant product warranty. To the extent that any contract is deemed formed between Dialight and the purchaser of Dialight products and/or an end-user, versions of documents available at [www.dialight.com](http://www.dialight.com) as at the date of sale shall be the versions incorporated therein. In the event of any discrepancy between this document or information provided at [www.dialight.com](http://www.dialight.com), the latter shall prevail.

# Vigilant® Ultra-Efficient LED High Bay - UL / CSA

## Ordering Information - Corded Model



### Corded Model - 3/4" Conduit - 100-277 VAC / 120-250 VDC

Part Number	Lumens	Wattage	lm/W	CCT, CRI	Lens	Beam Distribution	Hardware Options	Wiring
VEU-7NC2-JNNW-NGN	38,200	230	166	CW, 80CRI	Glass	Narrow	Pendant 3/4" NPT	10' Power Cable
VEU-7MC2-JNNW-NGN	37,400	230	163	CW, 80CRI	Glass	Medium	Pendant 3/4" NPT	10' Power Cable
VEU-7MC2-HNNW-NGN	32,300	195	166	CW, 80CRI	Glass	Medium	Pendant 3/4" NPT	10' Power Cable
VEU-7MC2-FNNW-NGN	28,000	165	170	CW, 80CRI	Glass	Medium	Pendant 3/4" NPT	10' Power Cable
VEU-7MC2-ENNW-NGN	23,800	140	170	CW, 80CRI	Glass	Medium	Pendant 3/4" NPT	10' Power Cable

### Corded Model - 3/4" Conduit - 347-480 VAC

VEU-7NC5-JNNW-NGN	38,200	230	166	CW, 80CRI	Glass	Narrow	Pendant 3/4" NPT	10' Power Cable
VEU-7MC5-JNNW-NGN	37,400	230	163	CW, 80CRI	Glass	Medium	Pendant 3/4" NPT	10' Power Cable
VEU-7MC5-HNNW-NGN	32,300	195	166	CW, 80CRI	Glass	Medium	Pendant 3/4" NPT	10' Power Cable
VEU-7MC5-FNNW-NGN	28,000	165	170	CW, 80CRI	Glass	Medium	Pendant 3/4" NPT	10' Power Cable
VEU-7MC5-ENNW-NGN	23,800	140	170	CW, 80CRI	Glass	Medium	Pendant 3/4" NPT	10' Power Cable

### Integrated Wiring Box Model - Hook - 100-277 VAC / 120-250 VDC

VCU-7NC2-JDHN-NGN	38,200	230	166	CW, 80CRI	Glass	Narrow	Hook	Wiring Box
VCU-7MC2-JDHN-NGN	37,400	230	163	CW, 80CRI	Glass	Medium	Hook	Wiring Box
VCU-7MC2-HDHN-NGN	32,300	195	166	CW, 80CRI	Glass	Medium	Hook	Wiring Box
VCU-7MC2-FDHN-NGN	28,000	165	170	CW, 80CRI	Glass	Medium	Hook	Wiring Box
VCU-7MC2-EDHN-NGN	23,800	140	170	CW, 80CRI	Glass	Medium	Hook	Wiring Box

### Integrated Wiring Box Model - Hook - 347-480 VAC

VCU-7NC5-JDHN-NGN	38,200	230	166	CW, 80CRI	Glass	Narrow	Hook	Wiring Box
VCU-7MC5-JDHN-NGN	37,400	230	163	CW, 80CRI	Glass	Medium	Hook	Wiring Box
VCU-7MC5-HDHN-NGN	32,300	195	166	CW, 80CRI	Glass	Medium	Hook	Wiring Box
VCU-7MC5-FDHN-NGN	28,000	165	170	CW, 80CRI	Glass	Medium	Hook	Wiring Box
VCU-7MC5-EDHN-NGN	23,800	140	170	CW, 80CRI	Glass	Medium	Hook	Wiring Box

All values typical unless otherwise stated (tolerance +/- 10%)

**WARNING - INSTALLATION & SECONDARY RETENTION.** Use of any Dialight products without proper installation (including secondary retention / netting) and periodic inspections could cause severe injury or death. Dialight recommends that all installations should use secondary retention / netting (appropriate to the installation environment) where applicable. It is the exclusive responsibility of the contractor, installer and/or end-user to: (a) determine the suitability of the product for its intended application; and, (b) ensure that the product is safely installed (with secondary retention / netting where appropriate) and in compliance with all applicable laws and regulations. To the extent permissible under applicable laws, Dialight disclaims all liability for personal injury and/or other damage resulting from any dislodgment or other dislocation of its products.

## Vigilant® Ultra-Efficient LED Low Bay - UL / CSA

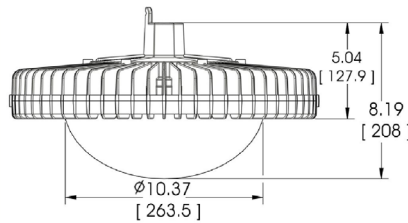
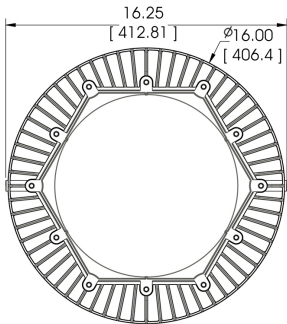
### Technical Information

#### Corded Model



#### Mechanical Information:

- Fixture weight:**  
18 lbs (8.16kg)
- Shipping weight:**  
24 lbs (10.8kg)
- Mounting:**  
3/4" NPT - top  
Various Kits
- Power Cord:**  
10' 18 AWG ST00W/S00W

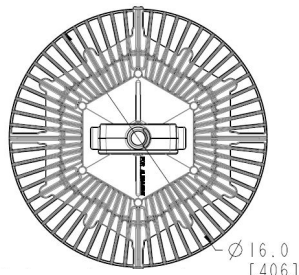
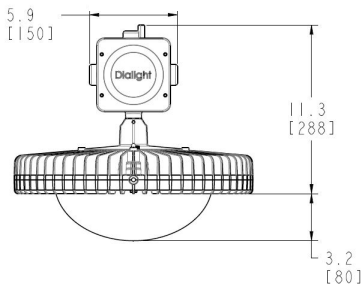


#### Integrated Wiring Box Model



#### Mechanical Information:

- Fixture weight:**  
20 lbs (9 kg)
- Shipping weight:**  
26 lbs (12 kg)
- Mounting:**  
3/4" NPT or Hook  
Various Kits
- Wiring Box Cable Entries:**  
(2x) 3/4" NPT



Dimensions in inches (mm)

#### Certifications & Ratings:

- 10 year warranty
- UL 1598/A
- UL 8750
- IP66/67
- CSA C22.2 No. 250.0-08
- NEMA 4X
- L70 rated for >150,000 hours

#### Variable Dimming:

**Variable Dimming Control:** 0-10 VDC

**Dimming Range:** 10 VDC = 100% light output  
0 VDC = <10% light output

#### Occupancy Sensor:

**Mounting Height:** Up to 40ft  
**Ingress Protection:** IP6X

#### Electrical Specifications:

**Operating Voltage:** 100-277 VAC (120-250 VDC)  
347-480 VAC

**Total system power consumption:** See table

**Operating Temp:** -40°F to +149°F (-40°C to +65°C)

**Harmonics:** IEC 61000-3-2 Class C

**Noise requirement /EMC:** FCC Title 47, Subpart B, Section 15, class A device. RF Immunity; 10V/m, 80MHz-1GHz

**Transient protection:** 100-277 VAC models tested to withstand up to 8kV/4kA per IEEE C62.41  
347-480VAC models tested to withstand up to 6kV/3kA per IEEE C62.41

**THD:** 6k-18k lm models: <20%

**Power Factor:** >0.9

**Fusing:** Internal

#### Construction:

**Housing:** Copper free aluminum

**Finish:** Superior dual coat finish  
Sealed polyester topcoat  
Chemical-resistant epoxy primer

**Lens:** See table

#### Photometric Information:

**CRI:** 80

**CCT:** 5000K (cool white)  
4000K (neutral white)

All values typical unless otherwise stated (tolerance +/- 10%)

**DISCLAIMER.** All product information provided is, to the best of Dialight's knowledge, accurate as of the date of publication. When ordering, refer to [www.dialight.com](http://www.dialight.com) for current versions of: (a) relevant product documentation (including the relevant product data sheets); (b) Dialight terms and conditions of sale; and, (c) the relevant product warranty. To the extent that any contract is deemed formed between Dialight and the purchaser of Dialight products and/or an end-user, versions of documents available at [www.dialight.com](http://www.dialight.com) as at the date of sale shall be the versions incorporated therein. In the event of any discrepancy between this document or information provided at [www.dialight.com](http://www.dialight.com), the latter shall prevail.

## Vigilant® Ultra-Efficient LED Low Bay - UL / CSA

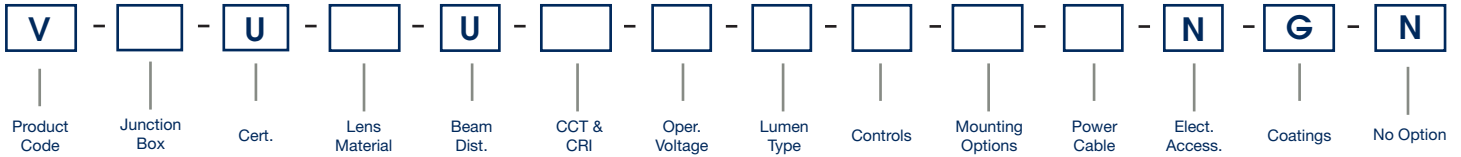
### Ordering Information



Project Information	
Part Number:	
Project:	
Fixture Type:	Date:

Specifications

### Ordering Information



Product Code	Beam Distribution	Lumen Type <sup>1</sup>	Power Cable
V Vigilant® Ultra-Efficient	U Ultra Wide	6 6,100 Lumens	N No Cord (Wiring Box only)
		9 9,000 Lumens	W 10' [3 meter] Power Cable
		B 13,400 Lumens	
		C 16,600 Lumens	
Junction Box	CCT & CRI	Controls	Electrical Accessories*
C Wiring Box	C Cool White 5000K - 80 CRI	D Continuous Dimming	N No Plug
E No Junction Box	N Neutral White 4000K - 80 CRI	J IntelliLED Wireless Controls	*Cord & plug options available upon request
		N No Option	
		Q Microwave Occ Sensor 40' <sup>3</sup>	
Certification	Operating Voltage	Mounting Options	Coatings
U UL 1598/A	2 100-277 VAC / 120-250 VDC	H Hook	G Gray (RAL 7040)
	5 347-480 VAC	N Pendant 3/4" NPT	
		P Pendant 3/4" NPT with Safety Retention Tabs	Option
		R Safety Retention Tabs with Hook	N No Option
Lens Material			
2 Acrylic - Clear (dry location only) <sup>2</sup>			
3 Acrylic - Diffused (dry location only) <sup>2</sup>			
4 Polycarbonate - Clear			
5 Polycarbonate - Diffused			
L Polycarbonate Dome - Diffused			

Notes
1) Lumen type based on using a polycarbonate dome lens. See page 14 for output of other options.
2) Acrylic lens are dry location only.
3) Occupancy Sensor models are dry locations only and are IP6X rated with a -20°C to +65°C ambient temperature range.

**WARNING - INSTALLATION & SECONDARY RETENTION.** Use of any Dialight products without proper installation (including secondary retention / netting) and periodic inspections could cause severe injury or death. Dialight recommends that all installations should use secondary retention / netting (appropriate to the installation environment) where applicable. It is the exclusive responsibility of the contractor, installer and/or end-user to: (a) determine the suitability of the product for its intended application; and, (b) ensure that the product is safely installed (with secondary retention / netting where appropriate) and in compliance with all applicable laws and regulations. To the extent permissible under applicable laws, Dialight disclaims all liability for personal injury and/or other damage resulting from any dislodgment or other dislocation of its products.

# Vigilant® Ultra-Efficient LED Low Bay - UL / CSA

## Ordering Information - Corded Model & Integrated Wiring Box Model



Corded Model - 3/4" Conduit - 100-277 VAC / 120-250 VDC								
Part Number	Lumens	Wattage	lm/W	CCT, CRI	Lens	Beam Distribution	Hardware Options	Wiring
VEU-LUC2-CNNW-NGN	16,700	115	145	CW, 80CRI	Polycarbonate Dome - Diffused	Ultra Wide	Pendant 3/4" NPT	10' Power Cable
VEU-LUC2-BNNW-NGN	13,400	90	149	CW, 80CRI	Polycarbonate Dome - Diffused	Ultra Wide	Pendant 3/4" NPT	10' Power Cable
VEU-LUC2-9NNW-NGN	9,000	60	150	CW, 80CRI	Polycarbonate Dome - Diffused	Ultra Wide	Pendant 3/4" NPT	10' Power Cable
VEU-LUC2-6NNW-NGN	6,100	43	142	CW, 80CRI	Polycarbonate Dome - Diffused	Ultra Wide	Pendant 3/4" NPT	10' Power Cable
Corded Model - 3/4" Conduit - 347-480 VAC								
VEU-LUC5-CNNW-NGN	16,700	115	145	CW, 80CRI	Polycarbonate Dome - Diffused	Ultra Wide	Pendant 3/4" NPT	10' Power Cable
VEU-LUC5-BNNW-NGN	13,400	90	149	CW, 80CRI	Polycarbonate Dome - Diffused	Ultra Wide	Pendant 3/4" NPT	10' Power Cable
VEU-LUC5-9NNW-NGN	9,000	60	150	CW, 80CRI	Polycarbonate Dome - Diffused	Ultra Wide	Pendant 3/4" NPT	10' Power Cable
Integrated Wiring Box Model - Hook - 100-277 VAC / 120-250 VDC								
VCU-LUC2-CDHN-NGN	16,700	115	145	CW, 80CRI	Polycarbonate Dome - Diffused	Ultra Wide	Hook	Wiring Box
VCU-LUC2-BDHN-NGN	13,400	90	149	CW, 80CRI	Polycarbonate Dome - Diffused	Ultra Wide	Hook	Wiring Box
VCU-LUC2-9DHN-NGN	9,000	60	150	CW, 80CRI	Polycarbonate Dome - Diffused	Ultra Wide	Hook	Wiring Box
VCU-LUC2-6DHN-NGN	6,100	43	142	CW, 80CRI	Polycarbonate Dome - Diffused	Ultra Wide	Hook	Wiring Box
Integrated Wiring Box Model - Hook - 347-480 VAC								
VCU-LUC5-CDHN-NGN	16,700	115	145	CW, 80CRI	Polycarbonate Dome - Diffused	Ultra Wide	Hook	Wiring Box
VCU-LUC5-BDHN-NGN	13,400	90	149	CW, 80CRI	Polycarbonate Dome - Diffused	Ultra Wide	Hook	Wiring Box
VCU-LUC5-9DHN-NGN	9,000	60	150	CW, 80CRI	Polycarbonate Dome - Diffused	Ultra Wide	Hook	Wiring Box

All values typical unless otherwise stated (tolerance +/- 10%)

**DISCLAIMER.** All product information provided is, to the best of Dialight's knowledge, accurate as of the date of publication. When ordering, refer to [www.dialight.com](http://www.dialight.com) for current versions of: (a) relevant product documentation (including the relevant product data sheets); (b) Dialight terms and conditions of sale; and, (c) the relevant product warranty. To the extent that any contract is deemed formed between Dialight and the purchaser of Dialight products and/or an end-user, versions of documents available at [www.dialight.com](http://www.dialight.com) as at the date of sale shall be the versions incorporated therein. In the event of any discrepancy between this document or information provided at [www.dialight.com](http://www.dialight.com), the latter shall prevail.

# SafeSite® Ultra-Efficient LED High Bay - UL / CSA

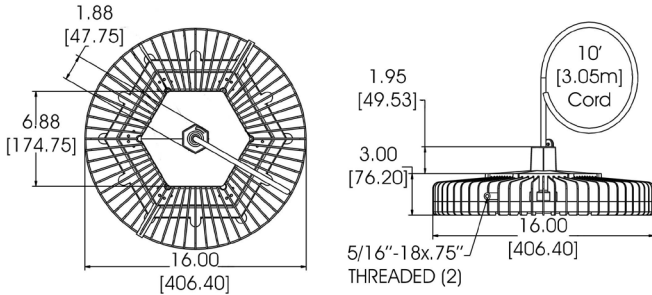
## Technical Information

### Corded Model



#### Mechanical Information:

- Fixture weight:**  
18 lbs (8.16kg)
- Shipping weight:**  
24 lbs (10.8kg)
- Mounting:**  
3/4" NPT - top  
Various Kits
- Power Cord:**  
10' 18 AWG ST00W/SOOW  
Patent pending

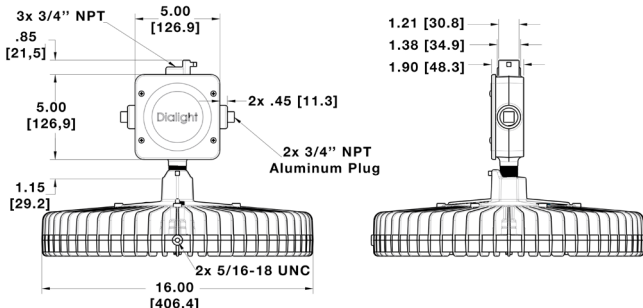


### Integrated Wiring Box Model



#### Mechanical Information:

- Fixture weight:**  
20 lbs (9 kg)
- Shipping weight:**  
26 lbs (12 kg)
- Mounting:**  
3/4" NPT or Hook
- Wiring Box Cable Entries:**  
(2x) 3/4" NPT



Dimensions in inches (mm)

#### Temperature Ratings:

**Ambient Temp Range**  
**T4 Temp Code:** -40°F to +149°F (-40°C to +65°C)

**Ambient Temp Range**  
**T5 Temp Code:** -40°F to +131°F (-40°C to +50°C)

#### Certifications & Ratings:

10 year warranty  
UL 844 (wet locations) NEMA 4X  
CSA 22.2 No. 137-M81 UL 8750  
IP66/67 L70 rated for >150,000 hours  
Class I, Div. 2 Groups A, B, C, D  
Class I, Zone 2, Group IIC  
Class II, Div. 1 Groups E, F, G (corded model only)  
Class II, Div. 2 Groups F, G  
Class III, Div. 1 & 2

#### Variable Dimming:

**Variable Dimming Control:** 0-10 VDC

**Dimming Range:** 10 VDC = 100% light output  
0 VDC = <10% light output

#### Electrical Specifications:

**Operating voltage:** 100-277 VAC, 120-250 VDC  
347-480 VAC

**Power consumption:** See table

**Operating temp:** -40°F to +149°F (-40°C to +65°C)

**Harmonics:** IEC 61000-3-2 Class C

**Noise requirement /EMC:** FCC Title 47, Subpart B, Section 15, Class A device. RF Immunity; 10V/m, 80MHz-1GHz

**Transient protection:** 100-277 VAC models tested to withstand up to 8kV/4kA per IEEE C62.41  
347-480VAC models tested to withstand up to 6kV/3kA per IEEE C62.41

**THD:** < 20%

**Power factor:** >0.9

**Fusing:** Internal

#### Construction:

**Housing:** Copper free aluminum

**Finish:** Superior dual coat finish  
Sealed polyester topcoat  
Chemical-resistant epoxy primer

**Lens:** See table

#### Photometric Information:

**CRI:** 80, 70

**CCT:** 5000K (cool white)  
4000K (neutral white)

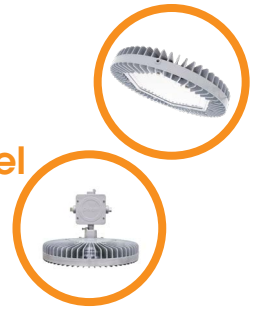
All values typical unless otherwise stated (tolerance +/- 10%)

**WARNING - INSTALLATION & SECONDARY RETENTION.** Use of any Dialight products without proper installation (including secondary retention / netting) and periodic inspections could cause severe injury or death. Dialight recommends that all installations should use secondary retention / netting (appropriate to the installation environment) where applicable. It is the exclusive responsibility of the contractor, installer and/or end-user to: (a) determine the suitability of the product for its intended application; and, (b) ensure that the product is safely installed (with secondary retention / netting where appropriate) and in compliance with all applicable laws and regulations. To the extent permissible under applicable laws, Dialight disclaims all liability for personal injury and/or other damage resulting from any dislodgment or other dislocation of its products.



# SafeSite® Ultra-Efficient LED High Bay - UL / CSA

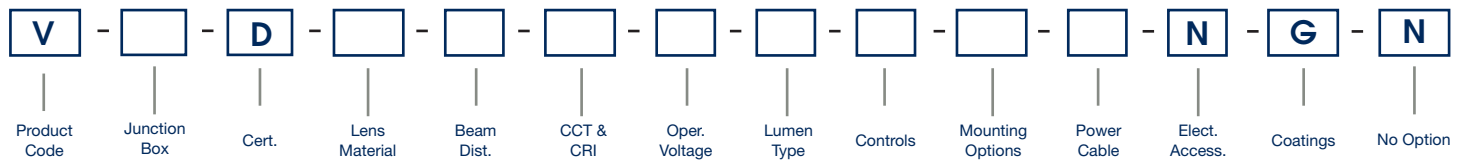
## Ordering Information - Corded Model & Integrated Wiring Box Model



Project Information	
Part Number:	
Project:	
Fixture Type:	Date:

Specifications

### Ordering Information



#### Product Code

V SafeSite® High Ultra-Efficient

#### Junction Box

- C Wiring Box<sup>2</sup>
- E No Junction Box

#### Certification

D UL 844 CID2, CII, CIII Class I, Zone 2

#### Lens Material

- 4 Polycarbonate - Clear
- 7 Glass - Clear
- L Polycarbonate Dome - Diffused

#### Beam Distribution

- E Aisle
- M Medium
- N Narrow
- R High Efficacy Round

#### CCT & CRI

- B Cool White 5000K - 70 CRI
- C Cool White 5000K - 80 CRI
- L Neutral White 4000K - 70 CRI
- N Neutral White 4000K - 80 CRI

#### Operating Voltage

- 2 100-277 VAC / 120-250 VDC
- 5 347-480 VAC

#### Lumen Type<sup>1</sup>

- A 12,100 Lumens
- B 15,000 Lumens
- C 19,100 Lumens
- E 26,300 Lumens
- F 30,900 Lumens
- H 35,700 Lumens
- J 41,300 Lumens

#### Controls

- D Continuous Dimming
- J IntelliLED Wireless
- N No Option
- Q Microwave Occupancy Sensor 40'<sup>3</sup>

#### Mounting Options

- H Hook (Wiring Box only)
- N 3/4" NPT
- P Secondary Retention Bracket

#### Power Cable

- N No Cord (Wiring Box only)
- W 10' [3 meter] Power Cable

#### Electrical Accessories

N No Plug

\*Cord & plug options available upon request

#### Coatings

G Gray (RAL 7040)

#### Option

N No Option

#### Notes

- Lumen type based on using a glass lens, round optic, 70CRI. See page 14 for output of other options.
- Wiring Box is not CIID1 rated.
- Occupancy Sensor models are dry locations only and are IP6X rated with a -20°C to +65°C ambient temperature range. Occupancy Sensor models are not CIID1 rated.

**DISCLAIMER.** All product information provided is, to the best of Dialight's knowledge, accurate as of the date of publication. When ordering, refer to [www.dialight.com](http://www.dialight.com) for current versions of: (a) relevant product documentation (including the relevant product data sheets); (b) Dialight terms and conditions of sale; and, (c) the relevant product warranty. To the extent that any contract is deemed formed between Dialight and the purchaser of Dialight products and/or an end-user, versions of documents available at [www.dialight.com](http://www.dialight.com) as at the date of sale shall be the versions incorporated therein. In the event of any discrepancy between this document or information provided at [www.dialight.com](http://www.dialight.com), the latter shall prevail.

# SafeSite® Ultra-Efficient LED High Bay - UL / CSA

## Ordering Information



Corded Model - 3/4" Conduit - 100-277 VAC / 120-250 VDC								
Part Number	Lumens	Wattage	lm/W	CCT, CRI	Lens	Beam Distribution	Hardware Options	Wiring
VED-7NC2-JNNW-NGN	38,200	230	166	CW, 80CRI	Glass	Narrow	Pendant 3/4" NPT	10' Power Cable
VED-7MC2-JNNW-NGN	37,400	230	163	CW, 80CRI	Glass	Medium	Pendant 3/4" NPT	10' Power Cable
VED-7MC2-HNNW-NGN	32,300	195	166	CW, 80CRI	Glass	Medium	Pendant 3/4" NPT	10' Power Cable
VED-7MC2-FNNW-NGN	28,000	165	170	CW, 80CRI	Glass	Medium	Pendant 3/4" NPT	10' Power Cable
VED-7MC2-ENNW-NGN	23,800	140	170	CW, 80CRI	Glass	Medium	Pendant 3/4" NPT	10' Power Cable
Corded Model - 3/4" Conduit - 347-480 VAC								
VED-7NC5-JNNW-NGN	38,200	230	166	CW, 80CRI	Glass	Narrow	Pendant 3/4" NPT	10' Power Cable
VED-7MC5-JNNW-NGN	37,400	230	163	CW, 80CRI	Glass	Medium	Pendant 3/4" NPT	10' Power Cable
VED-7MC5-HNNW-NGN	32,300	195	166	CW, 80CRI	Glass	Medium	Pendant 3/4" NPT	10' Power Cable
VED-7MC5-FNNW-NGN	28,000	165	170	CW, 80CRI	Glass	Medium	Pendant 3/4" NPT	10' Power Cable
VED-7MC5-ENNW-NGN	23,800	140	170	CW, 80CRI	Glass	Medium	Pendant 3/4" NPT	10' Power Cable
Integrated Wiring Box Model - Hook - 100-277 VAC / 120-250 VDC								
VCD-7NC2-JDHN-NGN	38,200	230	166	CW, 80CRI	Glass	Narrow	Hook	Wiring Box
VCD-7MC2-JDHN-NGN	37,400	230	163	CW, 80CRI	Glass	Medium	Hook	Wiring Box
VCD-7MC2-HDHN-NGN	32,300	195	166	CW, 80CRI	Glass	Medium	Hook	Wiring Box
VCD-7MC2-FDHN-NGN	28,000	165	170	CW, 80CRI	Glass	Medium	Hook	Wiring Box
VCD-7MC2-EDHN-NGN	23,800	140	170	CW, 80CRI	Glass	Medium	Hook	Wiring Box
Integrated Wiring Box Model - Hook - 347-480 VAC								
VCD-7NC5-JDHN-NGN	38,200	230	166	CW, 80CRI	Glass	Narrow	Hook	Wiring Box
VCD-7MC5-JDHN-NGN	37,400	230	163	CW, 80CRI	Glass	Medium	Hook	Wiring Box
VCD-7MC5-HDHN-NGN	32,300	195	166	CW, 80CRI	Glass	Medium	Hook	Wiring Box
VCD-7MC5-FDHN-NGN	28,000	165	170	CW, 80CRI	Glass	Medium	Hook	Wiring Box
VCD-7MC5-EDHN-NGN	23,800	140	170	CW, 80CRI	Glass	Medium	Hook	Wiring Box

All values typical unless otherwise stated (tolerance +/- 10%)

**DISCLAIMER.** All product information provided is, to the best of Dialight's knowledge, accurate as of the date of publication. When ordering, refer to [www.dialight.com](http://www.dialight.com) for current versions of: (a) relevant product documentation (including the relevant product data sheets); (b) Dialight terms and conditions of sale; and, (c) the relevant product warranty. To the extent that any contract is deemed formed between Dialight and the purchaser of Dialight products and/or an end-user, versions of documents available at [www.dialight.com](http://www.dialight.com) as at the date of sale shall be the versions incorporated therein. In the event of any discrepancy between this document or information provided at [www.dialight.com](http://www.dialight.com), the latter shall prevail.

# SafeSite® Ultra-Efficient LED Low Bay - UL / CSA

## Technical Information

### Corded Model



#### Mechanical Information:

**Fixture weight:**

18 lbs (8.16kg)

**Shipping weight:**

24 lbs (10.8kg)

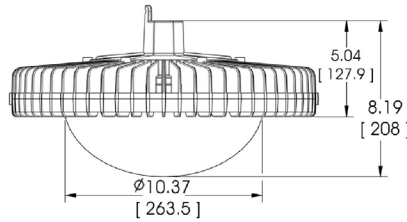
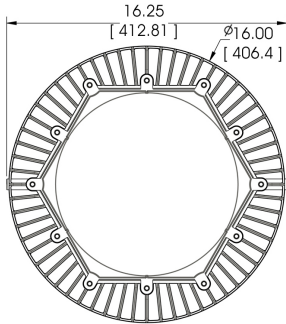
**Mounting:**

3/4" NPT - top

Various Kits

**Power Cord:**

10' 18 AWG ST00W/SOOW



### Integrated Wiring Box Model



#### Mechanical Information:

**Fixture weight:**

20 lbs (9 kg)

**Shipping weight:**

26 lbs (12 kg)

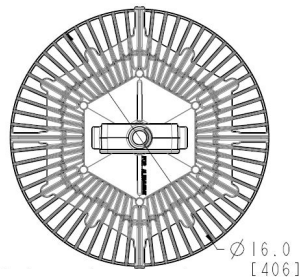
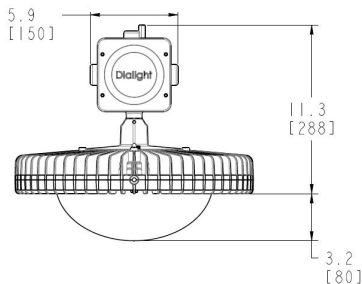
**Mounting:**

3/4" NPT or Hook

Various Kits

**Wiring Box Cable Entries:**

(2x) 3/4" NPT



Dimensions in inches (mm)

#### Certifications & Ratings:

10 year warranty  
 UL1598/A (wet locations) CSA 22.2 No. 250.0-08  
 UL 8750 NEMA 4X  
 IP66/67 L70 rated for >150,000 hours  
 Class I, Div. 2 Groups A, B, C, D  
 Class I, Zone 2, Group IIC  
 Class II, Div. 1 Groups E, F, G (corded model only)  
 Class II, Div. 2 Groups F, G  
 Class III, Div. 1 & 2

#### Variable Dimming:

**Variable Dimming Control:** 0-10 VDC

**Dimming Range:** 10 VDC = 100% light output  
 0 VDC = <10% light output

#### Electrical Specifications:

**Operating voltage:** 100-277 VAC, 120-250 VDC  
 347-480 VAC

**Power consumption:** See table

**Operating temp:** -40°F to +149°F (-40°C to +65°C)

**Harmonics:** IEC 61000-3-2 Class C

**Noise requirement /EMC:** FCC Title 47, Subpart B, Section 15, Class A device. RF Immunity; 10V/m, 80MHz-1GHz

**Transient protection:** 100-277 VAC models tested to withstand up to 8kV/4kA per IEEE C62.41  
 347-480VAC models tested to withstand up to 6kV/3kA per IEEE C62.41

**THD:** 6k-18k lm models: <20%

**Power factor:** >0.9

**Fusing:** Internal

#### Construction:

**Housing:** Copper free aluminum  
**Finish:** Superior dual coat finish  
 Sealed polyester topcoat  
 Chemical-resistant epoxy primer

**Lens:** See table

#### Photometric Information:

**CRI:** 80  
**CCT:** 5000K (cool white)  
 4000K (neutral white)  
 2700K (warm white)

All values typical unless otherwise stated (tolerance +/- 10%)

**WARNING - INSTALLATION & SECONDARY RETENTION.** Use of any Dialight products without proper installation (including secondary retention / netting) and periodic inspections could cause severe injury or death. Dialight recommends that all installations should use secondary retention / netting (appropriate to the installation environment) where applicable. It is the exclusive responsibility of the contractor, installer and/or end-user to: (a) determine the suitability of the product for its intended application; and, (b) ensure that the product is safely installed (with secondary retention / netting where appropriate) and in compliance with all applicable laws and regulations. To the extent permissible under applicable laws, Dialight disclaims all liability for personal injury and/or other damage resulting from any dislodgment or other dislocation of its products.

## SafeSite® Ultra-Efficient LED Low Bay - UL / CSA

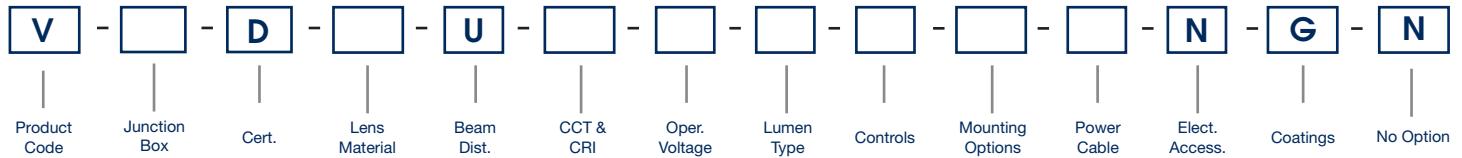
### Ordering Information - Corded Model & Integrated Wiring Box Model



Project Information	
Part Number:	
Project:	
Fixture Type:	Date:

Specifications

### Ordering Information



#### Product Code

V Vigilant® Ultra-Efficient

#### Junction Box

C Wiring Box<sup>2</sup>

E No Junction Box

#### Certification

D UL 844 CID2, CII, CIII  
Class I, Zone 2

#### Lens Material

4 Polycarbonate - Clear

5 Polycarbonate - Diffused

L Polycarbonate Dome - Diffused

#### Beam Distribution

U Ultra Wide

#### CCT & CRI

C Cool White 5000K - 80 CRI

N Neutral White 4000K - 80 CRI

#### Operating Voltage

2 100-277 VAC / 120-250 VDC

5 347-480 VAC

#### Lumen Type<sup>1</sup>

6 6,100 Lumens

9 9,000 Lumens

B 13,400 Lumens

C 16,600 Lumens

#### Controls

D Continuous Dimming

J IntelliLED Wireless Controls

N No Option

Q Microwave Occ Sensor 40'<sup>3</sup>

#### Mounting Options

H Hook

N Pendant 3/4" NPT

P Pendant 3/4" NPT with Safety  
Retention Tabs

R Safety Retention Tabs with Hook

#### Power Cable

N No Cord (Wiring Box only)

W 10' [3 meter] Power Cable

#### Electrical Accessories\*

N No Plug

\*Cord & plug options available upon request

#### Coatings

G Gray (RAL 7040)

#### Option

N No Option

#### Notes

1) Lumen type based on using a polycarbonate dome lens. See page 14 for output of other options.

2) Wiring Box is not CLID1 rated.

3) Occupancy Sensor models are dry locations only and are IP6X rated with a -20°C to +65°C ambient temperature range. Occupancy Sensor models are not CLID1 rated.

**DISCLAIMER.** All product information provided is, to the best of Dialight's knowledge, accurate as of the date of publication. When ordering, refer to [www.dialight.com](http://www.dialight.com) for current versions of: (a) relevant product documentation (including the relevant product data sheets); (b) Dialight terms and conditions of sale; and, (c) the relevant product warranty. To the extent that any contract is deemed formed between Dialight and the purchaser of Dialight products and/or an end-user, versions of documents available at [www.dialight.com](http://www.dialight.com) as at the date of sale shall be the versions incorporated therein. In the event of any discrepancy between this document or information provided at [www.dialight.com](http://www.dialight.com), the latter shall prevail.

# SafeSite® Ultra-Efficient LED Low Bay - UL / CSA

## Ordering Information - Corded Model & Integrated Wiring Box Model



Corded Model - 3/4" Conduit - 100-277 VAC / 120-250 VDC								
Part Number	Lumens	Wattage	lm/W	CCT, CRI	Lens	Beam Distribution	Hardware Options	Wiring
VED-LUC2-CNNW-NGN	16,700	115	145	CW, 80CRI	Polycarbonate Dome - Diffused	Ultra Wide	Pendant 3/4" NPT	10' Power Cable
VED-LUC2-BNNW-NGN	13,400	90	149	CW, 80CRI	Polycarbonate Dome - Diffused	Ultra Wide	Pendant 3/4" NPT	10' Power Cable
VED-LUC2-9NNW-NGN	9,000	60	150	CW, 80CRI	Polycarbonate Dome - Diffused	Ultra Wide	Pendant 3/4" NPT	10' Power Cable
VED-LUC2-6NNW-NGN	6,100	43	142	CW, 80CRI	Polycarbonate Dome - Diffused	Ultra Wide	Pendant 3/4" NPT	10' Power Cable
Corded Model - 3/4" Conduit - 347-480 VAC								
VED-LUC5-CNNW-NGN	16,700	115	145	CW, 80CRI	Polycarbonate Dome - Diffused	Ultra Wide	Pendant 3/4" NPT	10' Power Cable
VED-LUC5-BNNW-NGN	13,400	90	149	CW, 80CRI	Polycarbonate Dome - Diffused	Ultra Wide	Pendant 3/4" NPT	10' Power Cable
VED-LUC5-9NNW-NGN	9,000	60	150	CW, 80CRI	Polycarbonate Dome - Diffused	Ultra Wide	Pendant 3/4" NPT	10' Power Cable
Integrated Wiring Box Model - Hook - 100-277 VAC / 120-250 VDC								
VCD-LUC2-CDHN-NGN	16,700	115	145	CW, 80CRI	Polycarbonate Dome - Diffused	Ultra Wide	Hook	Wiring Box
VCD-LUC2-BDHN-NGN	13,400	90	149	CW, 80CRI	Polycarbonate Dome - Diffused	Ultra Wide	Hook	Wiring Box
VCD-LUC2-9DHN-NGN	9,000	60	150	CW, 80CRI	Polycarbonate Dome - Diffused	Ultra Wide	Hook	Wiring Box
VCD-LUC2-6DHN-NGN	6,100	43	142	CW, 80CRI	Polycarbonate Dome - Diffused	Ultra Wide	Hook	Wiring Box
Integrated Wiring Box Model - Hook - 347-480 VAC								
VCD-LUC5-CDHN-NGN	16,700	115	145	CW, 80CRI	Polycarbonate Dome - Diffused	Ultra Wide	Hook	Wiring Box
VCD-LUC5-BDHN-NGN	13,400	90	149	CW, 80CRI	Polycarbonate Dome - Diffused	Ultra Wide	Hook	Wiring Box
VCD-LUC5-9DHN-NGN	9,000	60	150	CW, 80CRI	Polycarbonate Dome - Diffused	Ultra Wide	Hook	Wiring Box

All values typical unless otherwise stated (tolerance +/- 10%)

**DISCLAIMER.** All product information provided is, to the best of Dialight's knowledge, accurate as of the date of publication. When ordering, refer to [www.dialight.com](http://www.dialight.com) for current versions of: (a) relevant product documentation (including the relevant product data sheets); (b) Dialight terms and conditions of sale; and, (c) the relevant product warranty. To the extent that any contract is deemed formed between Dialight and the purchaser of Dialight products and/or an end-user, versions of documents available at [www.dialight.com](http://www.dialight.com) as at the date of sale shall be the versions incorporated therein. In the event of any discrepancy between this document or information provided at [www.dialight.com](http://www.dialight.com), the latter shall prevail.

## Lumen Tables - High Bay

Vigilant High Bay 100-277 VAC, 120-250 VDC and 347-480 VAC					
Output	Wattage	Optic	Lens Material	70 CRI, 5000K / 4000K CCT	
				Lumen Output	lm/W
J	230	High Efficacy Round	Glass	41,300	180
H	195			35,700	183
F	165			30,900	187
E	140			26,300	188
C	96			19,100	200
B	80			15,000	188
A	65			12,100	186

Variable	Type	Scale Factor
Lens	Glass - Clear	100%
	Acrylic - Clear	100%
	Polycarbonate - Clear	99%
	Polycarbonate - Dome Diffused	98%
Optic	Round	100%
	Narrow	97%
	Medium	95%
	Aisle	92%
CCT & CRI	CW 70 CRI	100%
	NW 70 CRI	100%
	CW 80 CRI	96%
	NW 80 CRI	96%

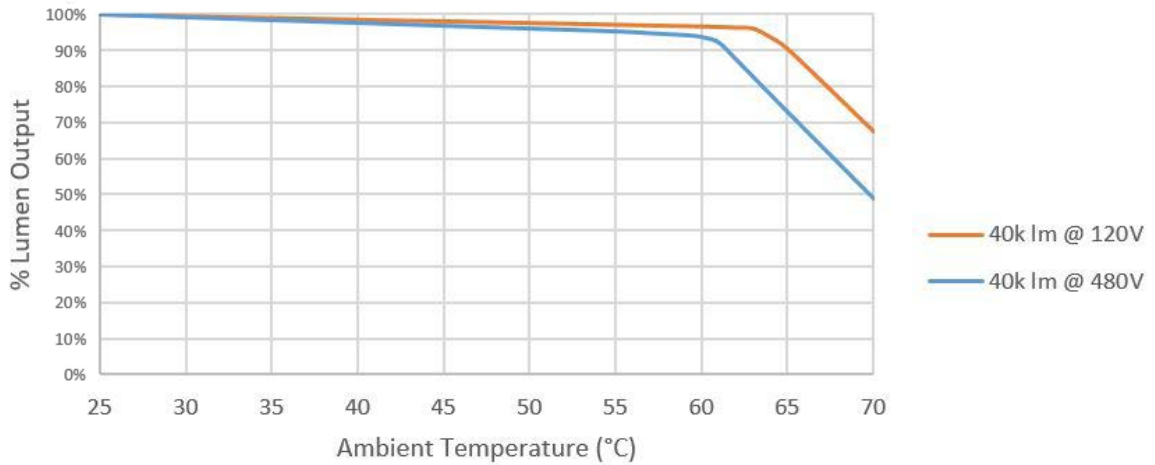
## Lumen Tables - Low Bay

Vigilant Low Bay 100-277 VAC, 120-250 VDC and 347-480 VAC					
Output	Wattage	Optic	Lens Material	80 CRI, 5000K / 4000K CCT	
				Lumen Output	lm/W
6	43	Ultra Wide	Polycarbonate - Dome	6,100	142
9	60			9,000	150
B	90			13,400	149
C	115			16,600	144

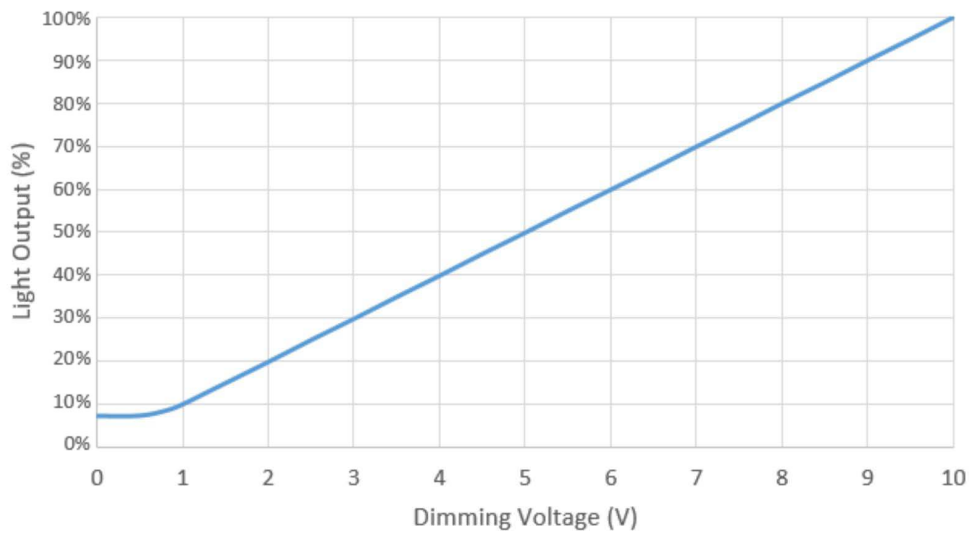
Variable	Type	Scale Factor
Lens	Acrylic - Clear	102%
	Polycarbonate - Clear	101%
	Polycarbonate - Dome Diffused	100%

**DISCLAIMER.** All product information provided is, to the best of Dialight's knowledge, accurate as of the date of publication. When ordering, refer to [www.dialight.com](http://www.dialight.com) for current versions of: (a) relevant product documentation (including the relevant product data sheets); (b) Dialight terms and conditions of sale; and, (c) the relevant product warranty. To the extent that any contract is deemed formed between Dialight and the purchaser of Dialight products and/or an end-user, versions of documents available at [www.dialight.com](http://www.dialight.com) as at the date of sale shall be the versions incorporated therein. In the event of any discrepancy between this document or information provided at [www.dialight.com](http://www.dialight.com), the latter shall prevail.

## Thermal Roll-Off



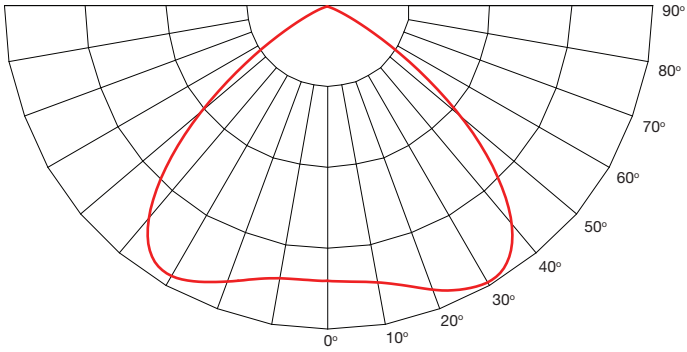
## Dimming Characterization 0-10V



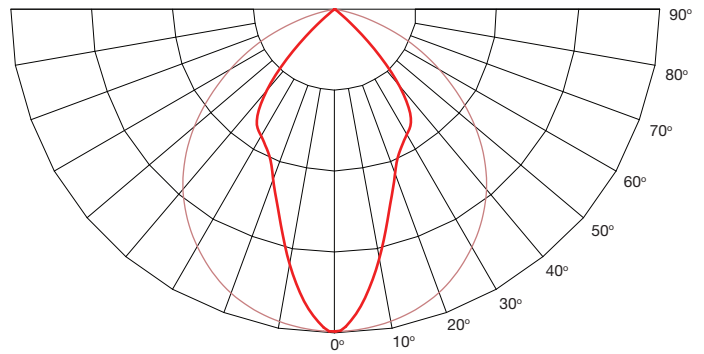
**DISCLAIMER.** All product information provided is, to the best of Dialight’s knowledge, accurate as of the date of publication. When ordering, refer to [www.dialight.com](http://www.dialight.com) for current versions of: (a) relevant product documentation (including the relevant product data sheets); (b) Dialight terms and conditions of sale; and, (c) the relevant product warranty. To the extent that any contract is deemed formed between Dialight and the purchaser of Dialight products and/or an end-user, versions of documents available at [www.dialight.com](http://www.dialight.com) as at the date of sale shall be the versions incorporated therein. In the event of any discrepancy between this document or information provided at [www.dialight.com](http://www.dialight.com), the latter shall prevail.

# Beam Distribution

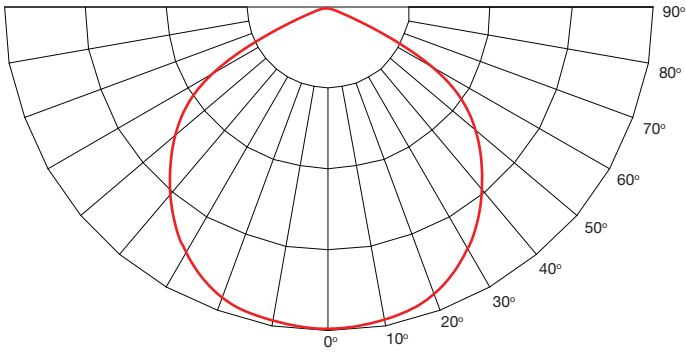
Medium



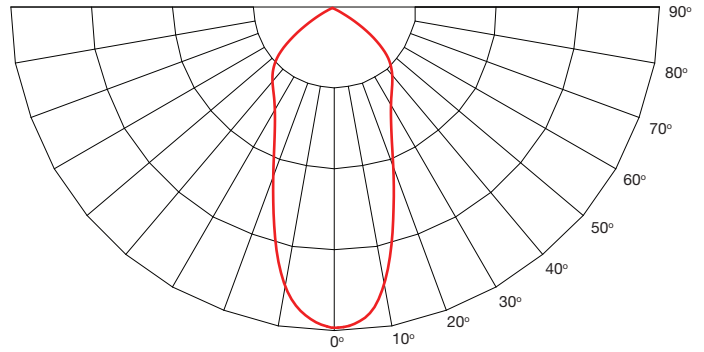
Aisle



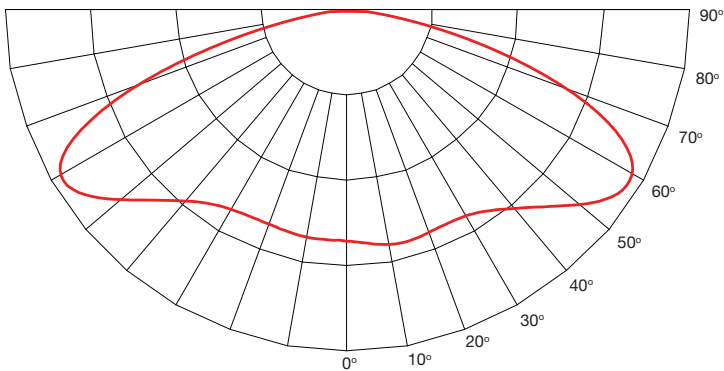
Round



Narrow



Ultra Wide



**DISCLAIMER.** All product information provided is, to the best of Dialight's knowledge, accurate as of the date of publication. When ordering, refer to [www.dialight.com](http://www.dialight.com) for current versions of: (a) relevant product documentation (including the relevant product data sheets); (b) Dialight terms and conditions of sale; and, (c) the relevant product warranty. To the extent that any contract is deemed formed between Dialight and the purchaser of Dialight products and/or an end-user, versions of documents available at [www.dialight.com](http://www.dialight.com) as at the date of sale shall be the versions incorporated therein. In the event of any discrepancy between this document or information provided at [www.dialight.com](http://www.dialight.com), the latter shall prevail.



# Lumen Maintenance Factor

% Lumen Output (40k lm @ 120V)									
Ambient Temp (°C)	Hours								
	0	15000	30000	45000	60000	75000	90000	100000	150000
25	100%	96%	93%	90%	87%	84%	91%	80%	71%
30	100%	96%	93%	90%	87%	84%	91%	79%	71%
35	99%	95%	92%	89%	86%	84%	90%	79%	71%
40	99%	95%	92%	89%	86%	83%	90%	79%	70%
45	98%	94%	91%	88%	85%	82%	80%	78%	69%
50	98%	94%	91%	87%	84%	82%	79%	77%	69%
55	97%	93%	90%	87%	84%	81%	78%	76%	68%
60	97%	93%	89%	86%	83%	80%	77%	75%	67%
65	90%	87%	84%	80%	78%	75%	72%	70%	62%

% Lumen Output (40k lm @ 480V)									
Ambient Temp (°C)	Hours								
	0	15000	30000	45000	60000	75000	90000	100000	150000
25	100%	96%	93%	90%	87%	84%	91%	80%	71%
30	99%	96%	92%	89%	87%	84%	90%	79%	71%
35	98%	95%	92%	89%	86%	83%	90%	79%	70%
40	98%	94%	91%	88%	85%	82%	89%	78%	70%
45	97%	93%	90%	87%	84%	81%	79%	77%	69%
50	96%	92%	89%	86%	83%	80%	78%	76%	67%
55	95%	91%	88%	85%	82%	79%	77%	75%	66%
60	94%	90%	87%	84%	81%	78%	75%	73%	65%
65	73%	70%	67%	65%	63%	60%	58%	56%	50%

% Lumen Output (26k lm @ 120V)									
Ambient Temp (°C)	Hours								
	0	15000	30000	45000	60000	75000	90000	100000	150000
25	100%	97%	95%	92%	90%	88%	86%	84%	77%
30	99%	97%	94%	92%	90%	87%	85%	84%	77%
35	99%	96%	94%	91%	89%	87%	85%	83%	76%
40	98%	96%	93%	91%	89%	86%	84%	83%	76%
45	98%	95%	93%	90%	88%	86%	84%	82%	75%
50	97%	94%	92%	90%	87%	85%	83%	81%	75%
55	97%	94%	91%	89%	87%	84%	82%	81%	74%
60	96%	93%	91%	88%	86%	84%	81%	80%	73%
65	96%	93%	90%	88%	85%	83%	81%	79%	72%

**DISCLAIMER.** All product information provided is, to the best of Dialight's knowledge, accurate as of the date of publication. When ordering, refer to [www.dialight.com](http://www.dialight.com) for current versions of: (a) relevant product documentation (including the relevant product data sheets); (b) Dialight terms and conditions of sale; and, (c) the relevant product warranty. To the extent that any contract is deemed formed between Dialight and the purchaser of Dialight products and/or an end-user, versions of documents available at [www.dialight.com](http://www.dialight.com) as at the date of sale shall be the versions incorporated therein. In the event of any discrepancy between this document or information provided at [www.dialight.com](http://www.dialight.com), the latter shall prevail.

# In-rush Current

## 100-277 VAC Models

Product	Output	Max Wattage	Inrush Current @ Input Voltage				Approximate Time Duration (T50) of Inrush Current			
			100VAC	120VAC	230VAC	277VAC	100VAC	120VAC	230VAC	277VAC
Low Bay	4k	33	6.4	7.7	14.8	17.8	1.5ms	1.5ms	1.5ms	1.5ms
	6k	50	6.4	7.7	14.8	17.8	1.5ms	1.5ms	1.5ms	1.5ms
	9k	69	6.4	7.7	14.8	17.8	1.5ms	1.5ms	1.5ms	1.5ms
	14k	102	6.4	7.7	14.8	17.8	1.5ms	1.5ms	1.5ms	1.5ms
	18k	130	6.4	7.7	14.8	17.8	1.5ms	1.5ms	1.5ms	1.5ms
High Bay	11k	73	6.4	7.7	14.8	17.8	1.5ms	1.5ms	1.5ms	1.5ms
	14k	90	6.4	7.7	14.8	17.8	1.5ms	1.5ms	1.5ms	1.5ms
	18k	111	6.4	7.7	14.8	17.8	1.5ms	1.5ms	1.5ms	1.5ms
	26k	161	6.4	7.7	14.8	17.8	1.5ms	1.5ms	1.5ms	1.5ms
	30k	190	6.4	7.7	14.8	17.8	1.5ms	1.5ms	1.5ms	1.5ms
	35k	225	6.4	7.7	14.8	17.8	1.5ms	1.5ms	1.5ms	1.5ms
	40k	261	6.4	7.7	14.8	17.8	1.5ms	1.5ms	1.5ms	1.5ms

## 347-480 VAC Models

Product	Output	Max Wattage	Inrush Current @ Input Voltage		Approximate Time Duration (T50) of Inrush Current	
			347VAC	480VAC	347VAC	480VAC
Low Bay	9k	71	22.3	30.9	1.8ms	1.8ms
	14k	103	22.3	30.9	1.8ms	1.8ms
	18k	130	22.3	30.9	1.8ms	1.8ms
High Bay	11k	70	22.3	30.9	1.8ms	1.8ms
	14k	89	22.3	30.9	1.8ms	1.8ms
	18k	112	22.3	30.9	1.8ms	1.8ms
	26k	159	22.3	30.9	1.8ms	1.8ms
	30k	187	22.3	30.9	1.8ms	1.8ms
	35k	221	22.3	30.9	1.8ms	1.8ms
	40k	252	22.3	30.9	1.8ms	1.8ms

**DISCLAIMER.** All product information provided is, to the best of Dialight's knowledge, accurate as of the date of publication. When ordering, refer to [www.dialight.com](http://www.dialight.com) for current versions of: (a) relevant product documentation (including the relevant product data sheets); (b) Dialight terms and conditions of sale; and, (c) the relevant product warranty. To the extent that any contract is deemed formed between Dialight and the purchaser of Dialight products and/or an end-user, versions of documents available at [www.dialight.com](http://www.dialight.com) as at the date of sale shall be the versions incorporated therein. In the event of any discrepancy between this document or information provided at [www.dialight.com](http://www.dialight.com), the latter shall prevail.

# Breakers

## 100-277 VAC Models

Product	Output	Max Wattage	Maximum # of Lights per Breaker @100VAC			Maximum # of Lights per Breaker @120VAC			Maximum # of Lights per Breaker @230VAC			Maximum # of Lights per Breaker @277VAC		
			C10	B16	C16	C10	B16	C16	C10	B16	C16	C10	B16	C16
Low Bay	4k	33	22	34	34	26	42	42	48	77	77	54	87	87
	6k	50	14	23	23	18	28	28	32	52	52	38	61	61
	9k	69	10	17	17	13	20	20	24	39	39	28	45	45
	14k	102	7	11	11	8	14	14	16	26	26	18	29	29
	18k	130	6	9	9	7	11	11	13	21	21	15	24	24
High Bay	11k	73	10	16	16	12	19	19	23	37	37	27	43	43
	14k	90	8	13	13	10	16	16	19	30	30	22	36	36
	18k	111	6	10	10	8	13	13	15	24	24	17	28	28
	26k	161	4	7	7	5	9	9	11	17	17	12	19	19
	30k	190	4	6	6	5	7	7	9	14	14	10	17	17
	35k	225	3	5	5	4	6	6	8	12	12	9	14	14
	40k	261	3	4	4	3	5	5	7	10	10	8	12	12

## 347-480 VAC Models

Product	Output	Max Wattage	Maximum # of Lights per Breaker @347VAC			Maximum # of Lights per Breaker @480VAC		
			C10	B16	C16	C10	B16	C16
Low Bay	9k	71	34	54	54	44	70	70
	14k	103	24	38	38	31	50	50
	18k	130	19	30	30	25	40	40
High Bay	11k	70	34	55	55	45	71	71
	14k	89	27	44	44	36	58	58
	18k	112	22	35	35	29	46	46
	26k	159	15	25	25	21	33	33
	30k	187	13	21	21	18	29	29
	35k	221	11	18	18	15	25	25
	40k	252	10	16	16	13	22	22

**DISCLAIMER.** All product information provided is, to the best of Dialight's knowledge, accurate as of the date of publication. When ordering, refer to [www.dialight.com](http://www.dialight.com) for current versions of: (a) relevant product documentation (including the relevant product data sheets); (b) Dialight terms and conditions of sale; and, (c) the relevant product warranty. To the extent that any contract is deemed formed between Dialight and the purchaser of Dialight products and/or an end-user, versions of documents available at [www.dialight.com](http://www.dialight.com) as at the date of sale shall be the versions incorporated therein. In the event of any discrepancy between this document or information provided at [www.dialight.com](http://www.dialight.com), the latter shall prevail.

# Vigilant® LED High Bay / Low Bay - UL / CSA



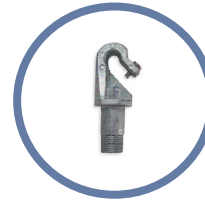
**HBXW3-SSL-316**  
**HBXW3-SSL-304**

- Stainless steel bracket



**HBXCAB48**

- 48" long stainless steel safety rope (for use with safety bracket)
- 2 pieces per kit



**HBXH**

- Hook
- For use with 3 conductor cable only



**HBXW3-SSL-304FT**

- 304 stainless steel forward throw bracket

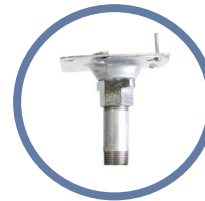
**HBXW3-SSL-316FT**

- 316 Stainless steel forward throw bracket



**HBXL**

- Loop
- For use with 3 conductor cable only



**HBXCU**

- Ceiling / wall mount



**HBXW2**

- Swivel bracket and cable gland

**HBXW3**

- Swivel bracket



**HBXSB**

- Stainless Steel (4x)



**HBXCGG**

- Cable gland



**HBXDC**

- 21° slope dust cover

**HBXDC45**

- 45° slope dust cover

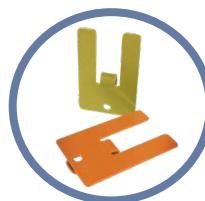
**HBXDC60**

- 60° slope dust cover



**LBXLENP**

- Polycarbonate dome lens replacement



**HBXFLAG-Y**  
**HBXFLAG-O**

- Yellow Aluminum
- Orange Aluminum
- Comes with 10 indicator flags

## North American HQ

1501 Route 34 South  
Farmingdale, NJ 07727  
Tel: 732-919-3119  
Fax: 732-751-5778  
info@dialight.com

## Dialight Europe Ltd

Leaf C, Level 36, Tower 42  
25 Old Broad Street  
London, EC2N 1HQ, United Kingdom  
Tel: +44 (0) 203 058 3540  
Customer Service: +44 (0) 163 866 6541  
sales-emea@dialight.com

## Middle East

Level 23 – Boulevard Plaza Tower 2  
Emaar Boulevard, Dubai, U.A.E.  
P.O. Box 124342  
Tel: +971 (4) 409-6962  
Fax: +971 (4) 409-6850

## Australia

108 Howe Street  
Osborne Park, WA 6017  
Tel: +61 (0) 8 9244 7600  
Fax: +61 (0) 8 9244 7601  
info@dialight.com.au

## Southeast Asia

33 Ubi Avenue 3  
#07-72 Vertex (Tower A)  
Singapore 408868  
Tel: +65 6578 7157  
Fax: +65 6578 7150  
enquiry@dialight.com.sg

## Brazil

Alameda Mercurio,  
225 – American Park Empresarial NR  
Indaiatuba – SP – 13347– 662  
Tel: +55 (19) 3113-4300  
Fax: +55 (19) 3113-4300  
brasil@dialight.com

### WARNING / DISCLAIMERS:

**Installation & secondary retention.** The use of this product without proper installation (including secondary retention / netting) and periodic inspections, could cause severe injury or death. Dialight recommends that all installations should use secondary retention / netting (appropriate to the installation environment) as applicable. Dialight products are intended for ultimate purchase, installation and operation by knowledgeable persons trained in the functional assessment, installation, use and maintenance of such products and all customers (including but not limited to end customers) are responsible for assessing the suitability of Dialight products for any given installation requirement. It is the exclusive responsibility of the contractor, installer and/or end-user to: (a) determine the suitability of the product for its intended application; and, (b) ensure that the product is safely installed (with secondary retention / netting as appropriate) and in compliance with all applicable laws and regulations.

**Product specifications & warranties.** All product information provided is, to the best of Dialight's knowledge, accurate as of the date of publication. All values and performance data herein are design or typical values when measured under laboratory conditions. The information herein is subject to change without notice. The products / software detailed herein are subject to applicable warranties and terms and conditions of use/purchase. Unless agreed otherwise in writing by an authorized representative of Dialight, Dialight does not represent that its products are fit for any particular purpose and accepts no liability for the installation and/or unauthorised use of its products. When ordering, refer to [www.dialight.com](http://www.dialight.com) for current versions of: (a) relevant product documentation (including relevant product data sheets); (b) Dialight terms and conditions of sale; and, (c) the relevant product warranties. To the extent that any contract is deemed formed between Dialight and the purchaser of Dialight products and/or an end-user, versions of documents available at [www.dialight.com](http://www.dialight.com) as at the date of sale shall be the versions incorporated therein. In the event of any discrepancy between this document and information provided at [www.dialight.com](http://www.dialight.com), the latter shall prevail.

**Exclusion of liability.** To the extent permissible under the relevant law, Dialight disclaims all liability for personal injury and/or other damage resulting from any dislodgment or other dislocation of its products. Whilst Dialight has used its reasonable endeavours to ensure the completeness and accuracy of information herein, Dialight does not assume any liability for damages resulting from use of this information or for any third-party representations made in relation to Dialight products.