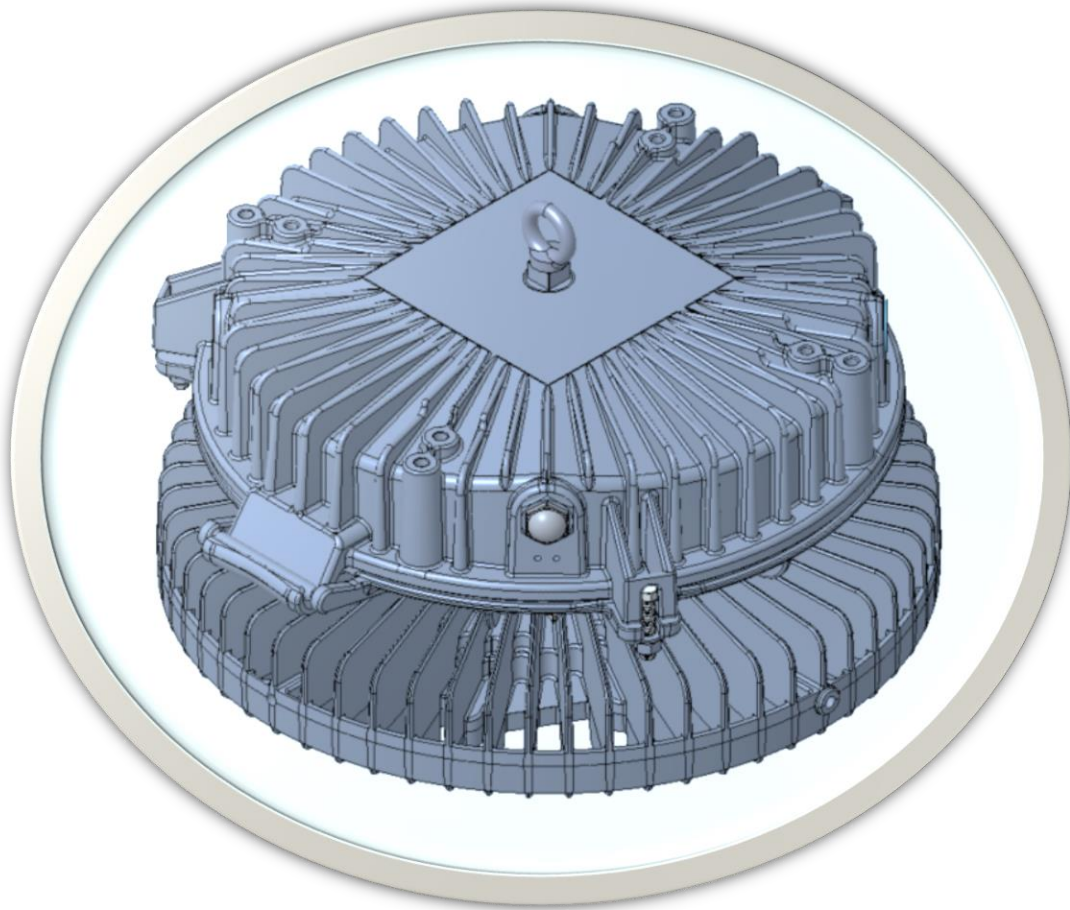


Important Information

These instructions contain safety information, read and follow them carefully. Dialight will not accept any responsibility for injury, damage or loss, which may occur due to incorrect installation, operation or maintenance.

Operation/Installation Instructions



Note: Save these instructions for future use

Note: These instructions are for Battery Backup specific case only. For general High Bay information, see supplemental instruction sheet

WARNING: To avoid fire and electrical shock, turn off the power at circuit breaker or fuse and test that the power is off before wiring.


IMPORTANT SAFEGUARDS

When using electrical equipment, basic safety precautions should always be followed including the following:

- READ AND FOLLOW ALL SAFETY INSTRUCTIONS.
- Do not let power supply cords touch hot surfaces.
- Do not mount near gas or electric heaters.
- Use caution when servicing batteries. Battery acid can cause burns to skin and eyes. If acid is spilled on skin or in eyes, flush acid with fresh water and contact a physician immediately.
- Equipment should be mounted in locations and at heights where it will not readily be subjected to tampering by unauthorized personnel.
- The use of accessory equipment not recommended by the manufacturer may cause an unsafe condition.
- Do not use this equipment for other than intended use.

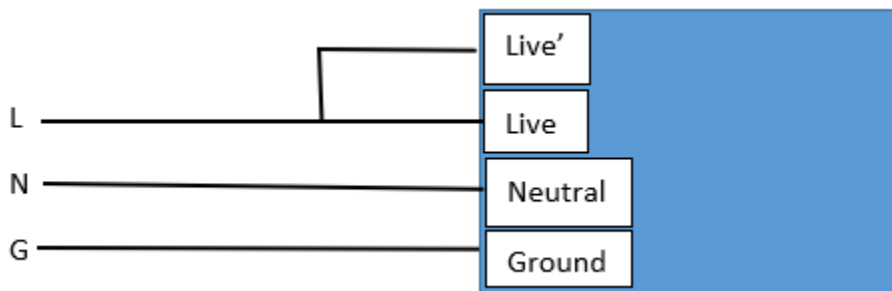
SAVE THESE INSTRUCTIONS.

- Install luminaire as intended using supplemental installation manual(s).
- Connect the mains supply wires to the luminaire as shown below.

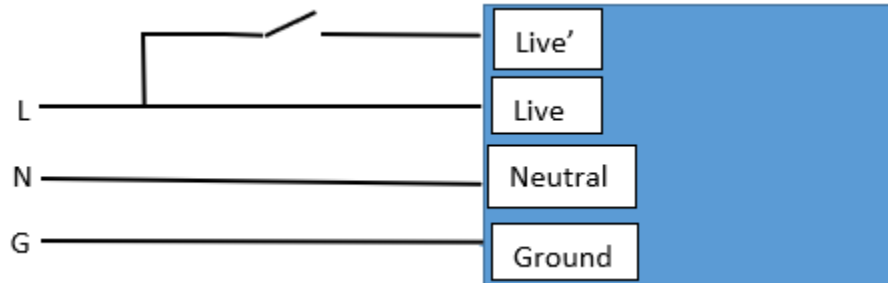
120-277 VAC BATTERY BACKUP SWITCH LIVE – NORTH AMERICA		
SYMBOL	COLOR	CONNECTION
	GREEN	EARTH
L	BLACK	PERMANENT LIVE
L'	ORANGE	SWITCH LIVE
N	WHITE	NEUTRAL

Non-switched Maintained

For Non-switched Maintain Operation - (1) Connect Input Live, Neutral and Ground to input terminal. 2) Jumper Live' to Live on the terminal block. In this Mode, Light will always be on, and Battery Backup will take over during a power outage.



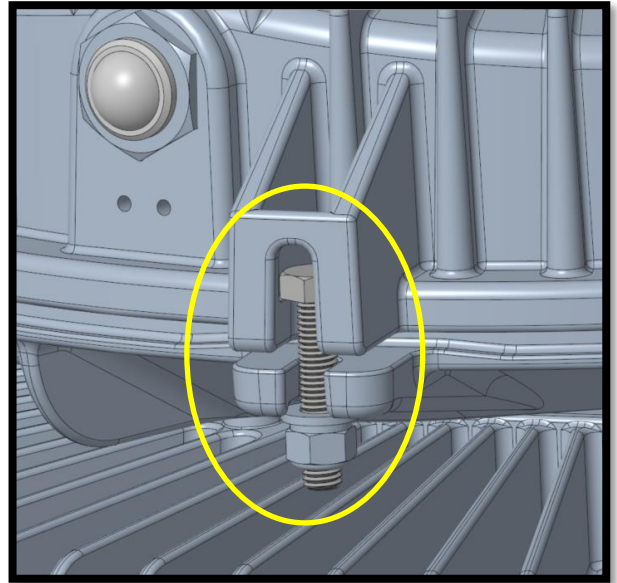
For Switch Maintained Operation – (1) Connect Input Live, Neutral and Ground to input terminal. (2) Wire an external switch between Live' and Live input. This switch will turn the light ON and OFF without affecting the backup operation.



-
- A top-down diagram of a circular vault door. The door has a central square opening with a handle. The door is divided into radial segments by a series of spokes. Three red sensors are located on the outer edge of the door, each highlighted by a yellow circle. Three orange arrows point from these sensors towards a common point centered above the central square opening.



1. Open the top clam shell cover by loosening the three M8 nuts as shown to access battery pack connection.



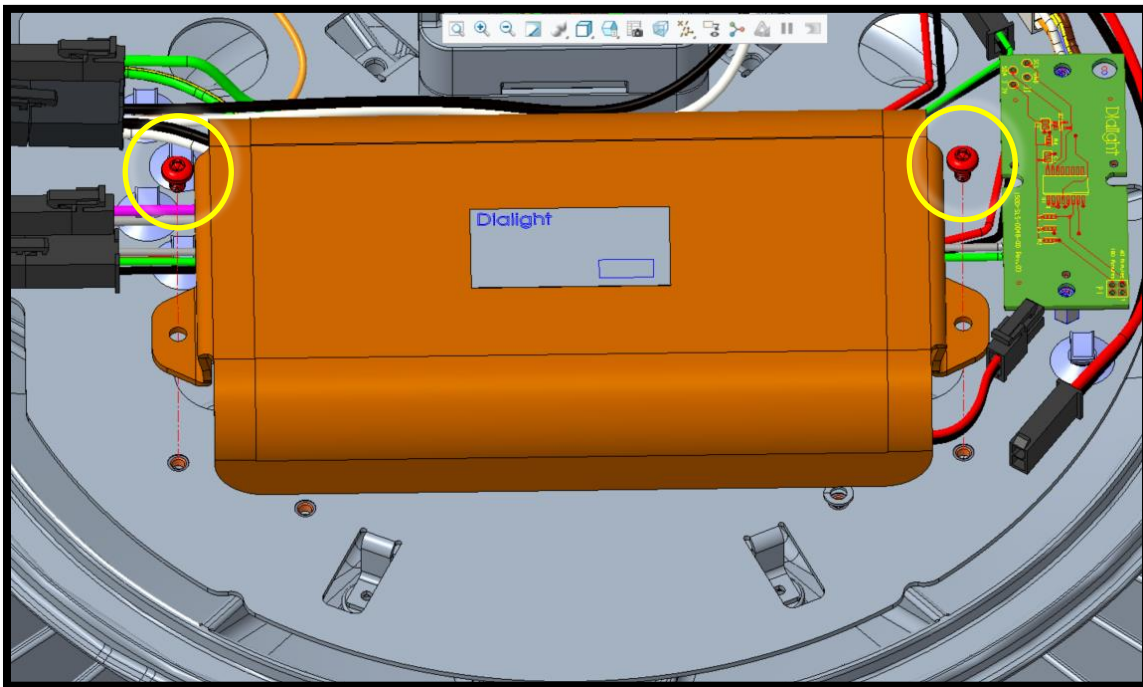


-

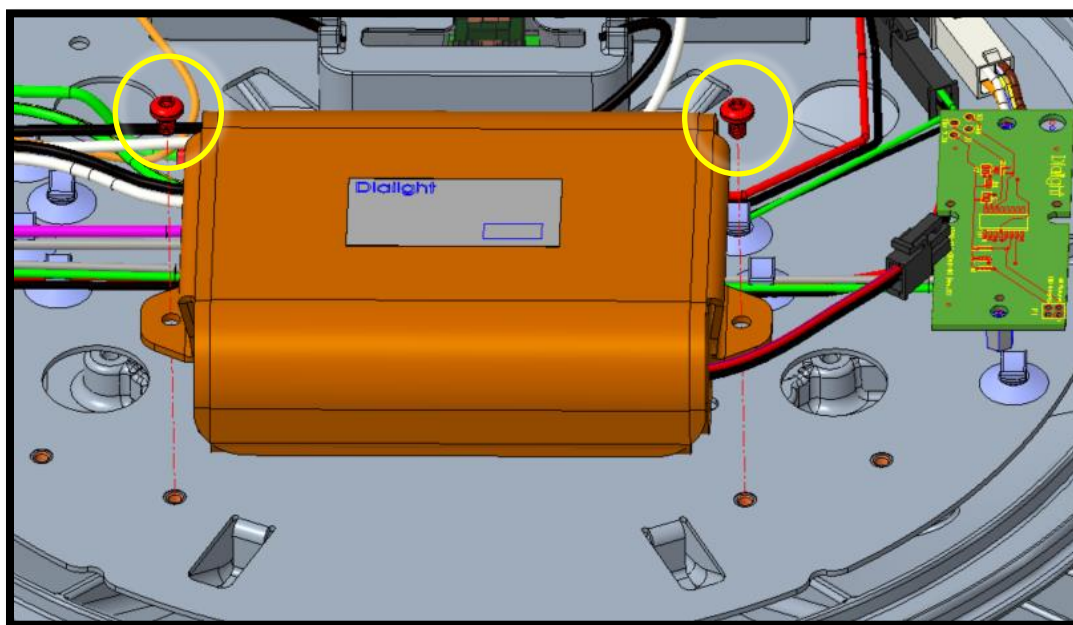
-



- Torque to 24-26 in-lbs

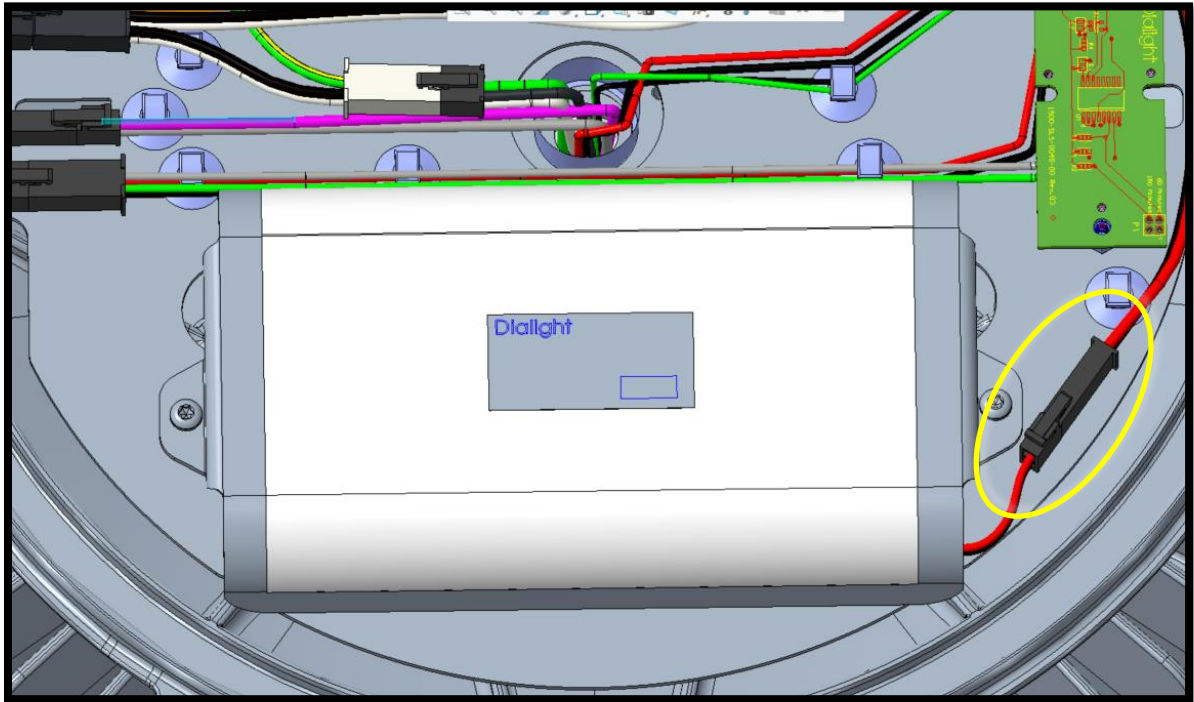


9100EB300100 / REV C
Dialight, 1501 Route 34 South, Farmingdale, NJ, USA 07727
Tel: 732 919 3119 Fax: 732 751 5778 www.dialight.com



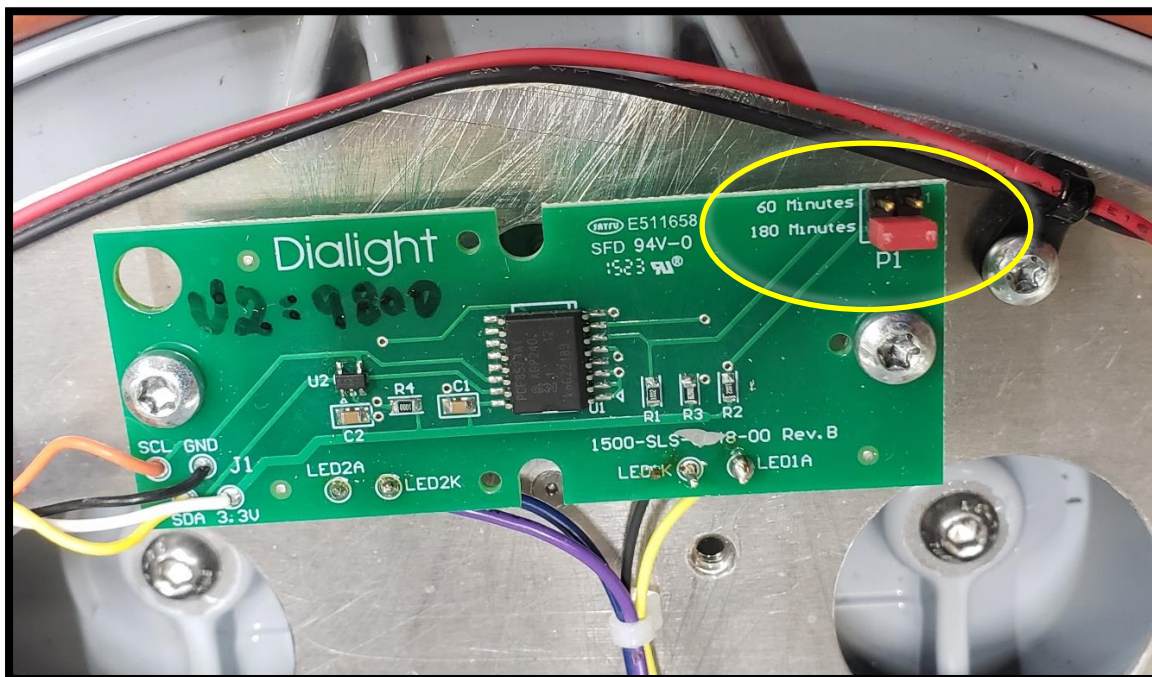
9100EHB300100 / REV C
Dialight, 1501 Route 34 South, Farmingdale, NJ, USA 07727
Tel: 732 919 3119 Fax: 732 751 5778 www.dialight.com

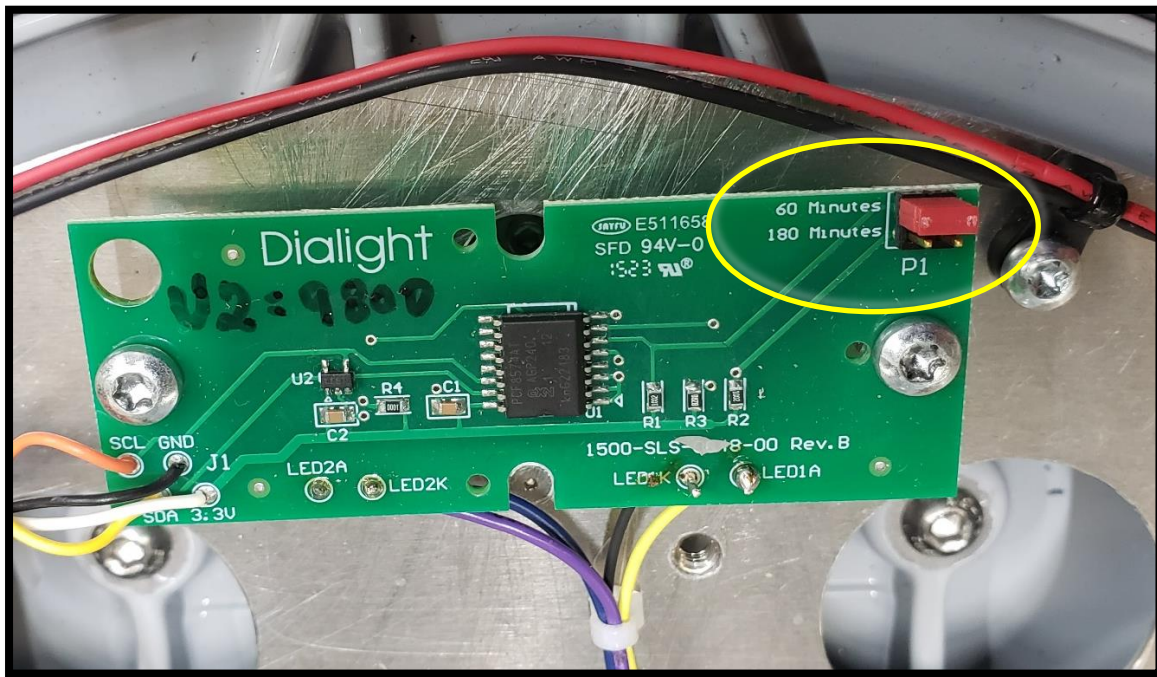
- Connect battery pack to battery driver as shown.



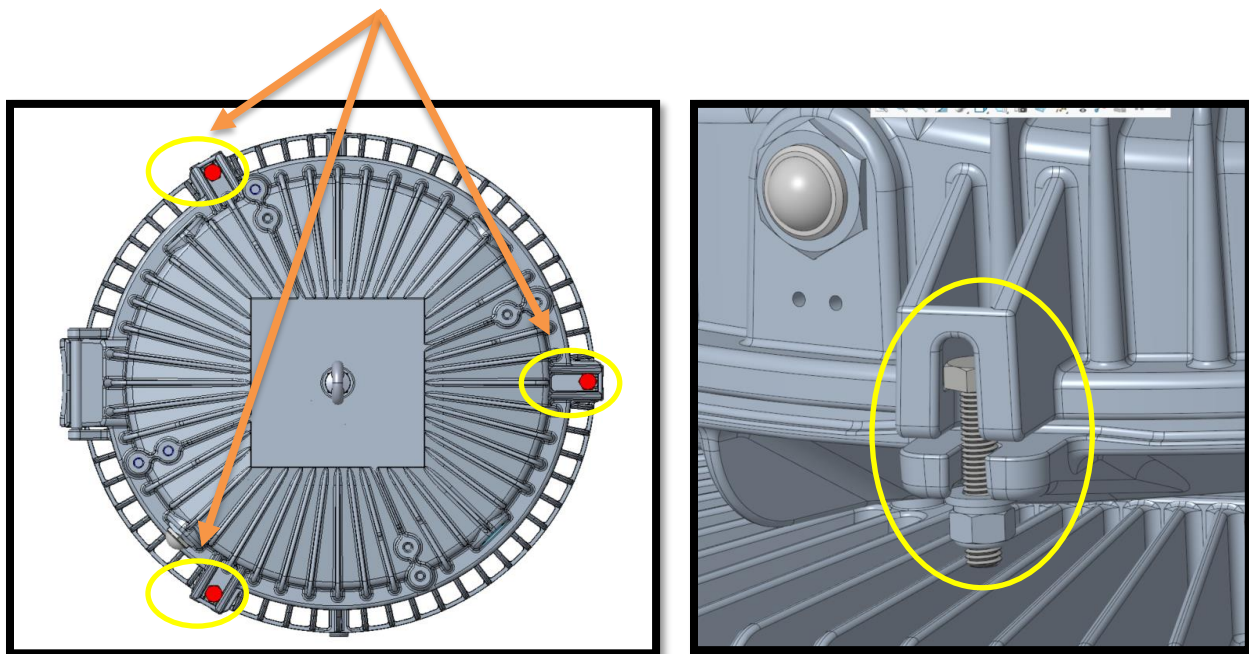
- Optional Step - If required, on the Runtime Board as displayed in the images below, the jumper can be toggled between 60- and 180-minute positions as highlighted to change the operational time of the light on Battery Backup mode and if the jumper is not used then it will default to 90 minutes.

(NOTE: FOR UL924 APPLICATIONS, 60 MINUTE DURATION MUST NOT BE SELECTED)





7. Close the clam shell cover by tightening the three M8 nuts as shown to 84-88 in-lbs.



NOTE: When closing, be sure no wires interfere with closure to avoid risk of pinching.



Battery Backup Function

Battery Backup Indicator Light Functions

LED Indicator Status	Status/Mode
Green ON and blinks every 10s	System OK/AC OK
Red ON and blinks every 5s	Battery not detected/Faulty. Check connections/Replace Battery
Red LED Blinks every 2s	Light Output Fault. Check wiring connections
RED LED Blinks every 1s	Multiple faults
Green LED Blinks every 2s	Performing Function Test*
Green LED blinks every 1s	Performing Duration Test/Commissioning Test*

*Function Test – Tests for the basic functionality of battery and light output connections

*Duration/Commissioning Test – Tests for full duration of light output in battery backup mode.

Technical Data

High Bay Battery Backup

Nominal AC Supply Voltage

120VAC, 230/240VAC, 120-277VAC, 50-60Hz, Single Phase

Power Consumption

[Lumens]

[W]

H*****E****(G/H)	191
H*****C****(G/H)	136
H*****B****(G/H)	106
H*****A****(G/H)	86
L***J**C****(G/H)	156
L***J**B****(G/H)	118
L***J**Q****(G/H)	84
L***J**6****(G/H)	56
L***J**4****(G/H)	44
(V/K)***E(M/N/R/W)**J****(G/H)	236
(V/K)***E(M/N/R/W)**H****(G/H)	201
(V/K)***E(M/N/R/W)**F****(G/H)	171
(V/K)***E(M/N/R/W)**E****(G/H)	146
(V/K)***E(M/N/R/W)**C****(G/H)	106
(V/K)***E(M/N/R/W)**B****(G/H)	86
(V/K)***E(M/N/R/W)**A****(G/H)	71
(V/K)***U**C****(G/H)	121
(V/K)***U**B****(G/H)	96
(V/K)***U**Q****(G/H)	66
(V/K)***U**6****(G/H)	49
(V/K)***D*U**4****(G/H)	36

Power Factor (AC only) >0.95

ATHD (AC only)

<20% @120VAC
<20% @230/240VAC
<20% @120-277VAC

Temperature

Ambient Temp Range:

-4°F to +131°F [-20°C to +55°C]

T4A Temp Code:

-4°F to +131°F [-20°C to +55°C]

Housing Material

A360 Die Cast Aluminum

Finish

Powder Coat:

Gray (RAL 7040)
Green (RAL 6020)
FPR Gray (RAL 7005)
Gray w/VOC
Orange (RAL 2001)
White (RAL 9010)
Yellow (RAL 1018)

Lens

Clear and Diffused Polycarbonate
Clear and Diffused Acrylic
Clear and Diffused Glass
Polycarbonate Dome.

Dimensions

Conduit Mount option

16.9 x 16.3 x 7.4.
[429 x 413 x 187 mm]

All other mounting options

Size varies by mount type.

Catalog No.	Value
(H/K/L/V)***** (N/P)***G	35 lbs.
(H/K/L/V)***** (N/P)***H	37 lbs.
(H/K/L/V)***** (H/R)***G	37 lbs.
(H/K/L/V)***** (H/R)***H	39 lbs.

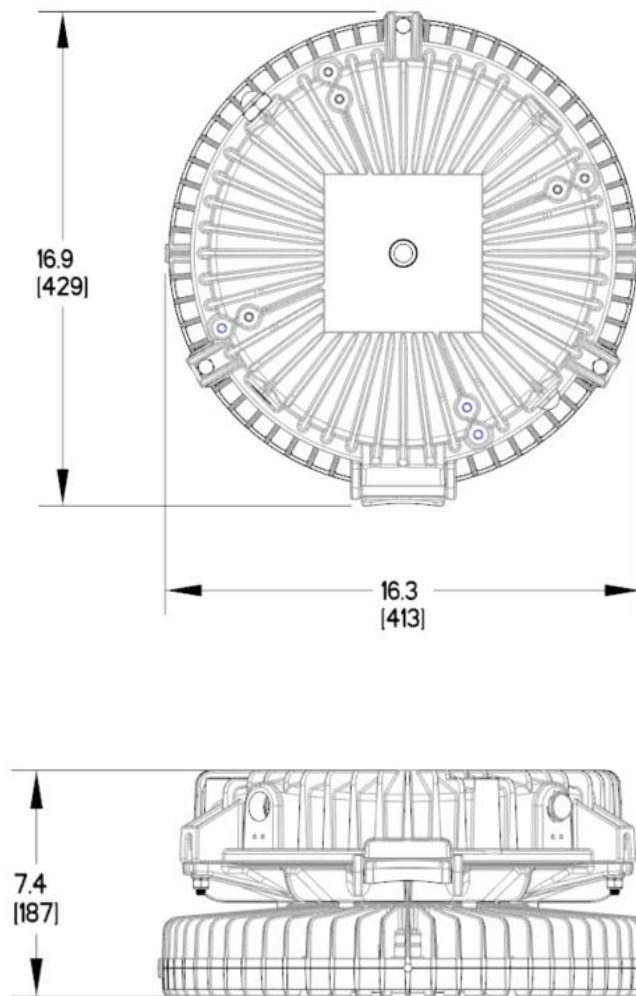
Maximum Mounting Height (For UL924 applications)

(LE/VE/KE)xxUxxxxxxxG:	10 ft
(LE/VE/KE)xxUxxxxxxxH:	16 ft
(HE/VE/KE)xx(7,E,M,N,W,R)xxxxxxxG:	20 ft
(HE/VE/KE)xx(7,E,M,N,W,R)xxxxxxxH:	31 ft

Technical Diagrams

Dimensions: in [mm]

NOTE: Below is for conduit mount luminaire only. Other available mounting options will effect overall dimensions.



Official Statement

All statements, technical information, and recommendations contained herein are based on information and tests that Dialight believes to be reliable. The accuracy or completeness thereof is not guaranteed. In accordance with Dialight "Terms and Conditions of Sale" and since conditions of use are outside our control, the purchaser should determine the suitability of the product for his or her intended use and assumes all risk and liability whatsoever in connection therewith.