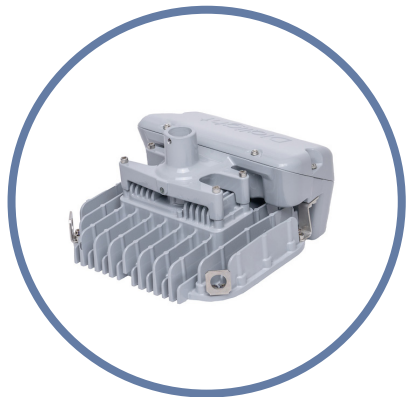


Dialight® LED Area Light - Battery Backup Models

Technical Specification Sheet - UL

Vigilant® LED Area Light 120-277 VAC Battery Backup

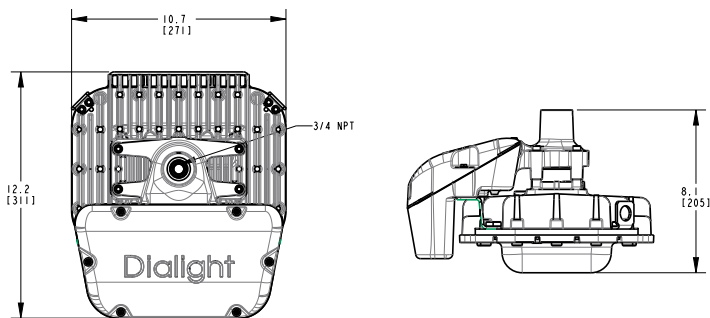


Certifications & Ratings*

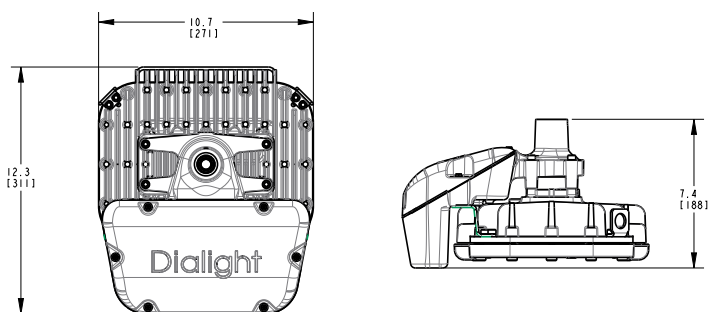
- 10 year warranty
- UL 1598/A
- UL 924
- CSA C22.2 No. 250
- CSA 22.2 No. 141
- IP66 / 67
- NEMA 4X
- L70 > 150,000h @ 55°C

*ETL listed

Polycarbonate Lens



Glass Lens



Dimensions in inches [mm]

Mechanical Information:

Fixture weight:	20 lb (9.1 kg) - Polycarbonate lens 22 lb (10 kg) - Tempered glass lens
Shipping weight:	Add 7 lb (3.2 kg) to weights above
Impact rating:	IK10 - Polycarbonate lens IK07 - Tempered glass lens
Cabling:	10' ST00W/SOOW 18/4 AWG cable

Electrical Specifications:

Operating voltage:	120-277 VAC, 50/60Hz
Total system power consumption:	See table
Operating temperature:	-4°F to +131°F (-20°C to +55°C)
EMC:	FCC Title 47, Subpart B, Section 15, Class A device RF Immunity 20V/m 80MHz-1GHz.
Transient protection:	6kV/3kA L-L and L-GND
THD:	< 20%
Power factor:	> 0.9

Construction:

Housing:	Copper-free aluminum
Finish:	Superior dual coat finish - Sealed polyester topcoat - Epoxy primer
Lens:	Hard-coated polycarbonate Tempered glass

Photometric Information:

CRI:	80
CCT:	5000K (cool white) 4000K (neutral white) 2700K (warm white)
Optics:	360° 180° forward throw for 45° mounting Wide for 0° mounting

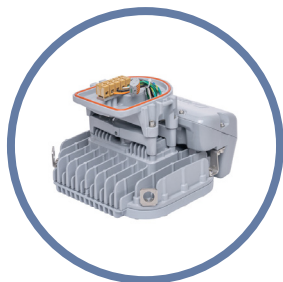
All values typical unless otherwise stated (tolerance +/- 10%)

WARNING - INSTALLATION & SECONDARY RETENTION. Use of any Dialight products without proper installation (including secondary retention / netting) and periodic inspections could cause severe injury or death. Dialight recommends that all installations should use secondary retention / netting (appropriate to the installation environment) where applicable. It is the exclusive responsibility of the contractor, installer and/or end-user to: (a) determine the suitability of the product for its intended application; and, (b) ensure that the product is safely installed (with secondary retention / netting where appropriate) and in compliance with all applicable laws and regulations. To the extent permissible under applicable laws, Dialight disclaims all liability for personal injury and/or other damage resulting from any dislodgment or other dislocation of its products.

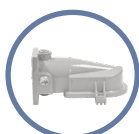
Vigilant® LED Area Light

120-277 VAC Battery Backup

Universal Mounting Adapter



For use with HZXW01, HZXW45, HZXS45 or HZXFM brackets sold separately



HZXW01



HZXS45



HZXS90 / HZXT90



HZXS25



HZXW45



HZXFM

Certifications & Ratings*

- 10 year warranty
- UL 1598/A
- UL 924
- CSA C22.2 No. 250
- CSA 22.2 No. 141
- IP66 / 67
- NEMA 4X
- L70 > 150,000h @ 55°C

*ETL listed

Mechanical Information:

Fixture weight:

UMA models:	22 lb (10 kg) - Polycarbonate lens
	24 lb (10.9 kg) - Tempered glass lens
Wall mount models:	25 lb (11.4 kg) - Polycarbonate lens
	27 lb (12.3 kg) - Tempered glass lens
45° wall mount models:	24 lb (10.9 kg) - Polycarbonate lens
	26 lb (11.8 kg) - Tempered glass lens
45° stanchion mount:	27 lb (12.2 kg) - Polycarbonate lens
	30 lb (13.6 kg) - Tempered glass lens
Ceiling mount:	24 lb (10.9 kg) - Polycarbonate lens
	26 lb (11.8 kg) - Tempered glass lens
90° stanchion mount:	26 lb (11.7 kg) - Polycarbonate lens
	28 lb (12.6 kg) - Tempered glass lens

Shipping weight:

Add 7 lb (3.2 kg) to weights above

Impact rating:

IK10 - Polycarbonate lens
IK07 - Tempered glass lens

Cabling:

14" leads 1.02 mm 18 AWG

Electrical Specifications:

Operating voltage:

120-277 VAC, 50/60Hz

Operating temperature:

-4°F to +131°F (-20°C to +55°C)

EMC:

FCC Title 47, Subpart B, Section 15,
Class A device
RF Immunity 20V/m 80MHz-1GHz.

Transient protection:

6kV/3kA L-L and L-GND

THD:

< 20%

Power factor:

> 0.9

Construction:

Housing:

Copper-free aluminum

Finish:

Superior dual coat finish
- Sealed polyester topcoat
- Epoxy primer

Lens:

Hard-coated polycarbonate
Tempered glass

Photometric Information:

CRI:

80

CCT:

5000K (cool white)
4000K (neutral white)
2700K (warm white)

Optics:

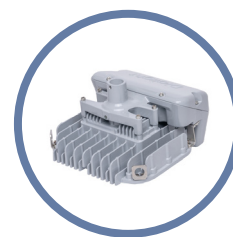
360°
180° forward throw for 45° mounting
Wide for 0° mounting

All values typical unless otherwise stated (tolerance +/- 10%)

WARNING - INSTALLATION & SECONDARY RETENTION. Use of any Dialight products without proper installation (including secondary retention / netting) and periodic inspections could cause severe injury or death. Dialight recommends that all installations should use secondary retention / netting (appropriate to the installation environment) where applicable. It is the exclusive responsibility of the contractor, installer and/or end-user to: (a) determine the suitability of the product for its intended application; and, (b) ensure that the product is safely installed (with secondary retention / netting where appropriate) and in compliance with all applicable laws and regulations. To the extent permissible under applicable laws, Dialight disclaims all liability for personal injury and/or other damage resulting from any dislodgment or other dislocation of its products.

Vigilant® LED Area Light

120-277 VAC Battery Backup



Project Information		
Part Number:		
Project:		
Fixture Type:		Date:

Specifications

Ordering Information

AL	-	U	-		-		-		-	2	-		-	N	-		-		-	N	-	G	-	F
Product Code		Cert.		Lens Material		Beam Dist.		CCT & CRI		Oper. Voltage		Lumen Type		Controls		Mounting Options		HW Access.		Elect. Access.		Coatings		Battery

Product Code	
AL	Area Light
Certification	
U	UL 1598/A CSA 22.2 No. 250.0
Lens Material	
5	Polycarbonate - Diffused
7	Glass - Clear
Beam Distribution	
A	180°
B	360°
W	Wide

CCT & CRI	
C	Cool White 5000K - 80 CRI
N	Neutral White 4000K - 80 CRI
W	Warm White 2700K - 80 CRI
Operating Voltage	
2	120 - 277 VAC
Lumen Type	
3	3,100 Lumens
4	4,200 Lumens
6	5,700 Lumens
7	7,300 Lumens
9	9,000 Lumens
Controls	
N	No Options

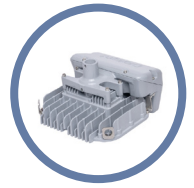
Mounting Options	
	Retro-fit Adapter
	Universal Mounting Adapter (UMA)
B	Swivel Bracket, Locking 0° - 90° 316 Stainless Steel
N	3/4" NPT Pendant
A	Appleton Mercmaster III
C	Crouse-Hinds - Champ
E	GE Mini-Gard
G	GE Filtr-Gard
H	Thomas & Betts Hazlux
K	Killark Certilite & Certilite V
M	Appleton Mercmaster II
P	Holophane Petrolux II and III
F	Ceiling Mount
R	90° Stanchion Mount (Slip)
S	45° Stanchion Mount
T	90° Stanchion Mount (NPT)
U	UMA - Mounting Hub
V	0° Wall Mount
W	45° Wall Mount
D	25° Stanchion Mount

Hardware Accessories	
N	For Mounting Options - A, C, F, G, H, K, M, S, U, V, W, Y (individual wire leads are terminated in adapter housing)
W	10 ft (3 meter) Power Cable for Mounting Options - B, N
Electrical Accessories	
N	No Option
Coatings	
G	Gray (RAL 7040)
Battery	
F	90 min.

DISCLAIMER. All product information provided is, to the best of Dialight's knowledge, accurate as of the date of publication. When ordering, refer to www.dialight.com for current versions of: (a) relevant product documentation (including the relevant product data sheets); (b) Dialight terms and conditions of sale; and, (c) the relevant product warranty. To the extent that any contract is deemed formed between Dialight and the purchaser of Dialight products and/or an end-user, versions of documents available at www.dialight.com as at the date of sale shall be the versions incorporated therein. In the event of any discrepancy between this document or information provided at www.dialight.com, the latter shall prevail.

Ordering Information

Vigilant® LED Area Light - 120-277 VAC Battery Backup



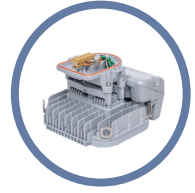
Part Number	Initial Fixture Lumens	Wattage	lm/W	CCT	Lens	Beam Distribution	Mounting
Gen II Battery Backup - UL 1598/A - 3/4" NPT Models							
ALU-7AC2-9NNW-NGF	8,800	71	124	CW	Tempered Glass	180°	3/4" NPT
ALU-5AC2-9NNW-NGF	8,100	71	114	CW	Polycarbonate Diffused	180°	3/4" NPT
ALU-7BC2-9NNW-NGF	9,000	71	127	CW	Tempered Glass	360°	3/4" NPT
ALU-5BC2-9NNW-NGF	8,300	71	117	CW	Polycarbonate Diffused	360°	3/4" NPT
ALU-7AC2-7NNW-NGF	7,100	57	125	CW	Tempered Glass	180°	3/4" NPT
ALU-5AC2-7NNW-NGF	6,600	57	116	CW	Polycarbonate Diffused	180°	3/4" NPT
ALU-7BC2-7NNW-NGF	7,300	57	128	CW	Tempered Glass	360°	3/4" NPT
ALU-5BC2-7NNW-NGF	6,700	57	118	CW	Polycarbonate Diffused	360°	3/4" NPT
ALU-7WC2-7NNW-NGF	7,300	69	106	CW	Tempered Glass	Wide	3/4" NPT
ALU-5WC2-7NNW-NGF	6,700	69	97	CW	Polycarbonate Diffused	Wide	3/4" NPT
ALU-7AC2-6NNW-NGF	5,500	45	122	CW	Tempered Glass	180°	3/4" NPT
ALU-5AC2-6NNW-NGF	5,100	45	113	CW	Polycarbonate Diffused	180°	3/4" NPT
ALU-7BC2-6NNW-NGF	5,700	45	127	CW	Tempered Glass	360°	3/4" NPT
ALU-5BC2-6NNW-NGF	5,300	45	118	CW	Polycarbonate Diffused	360°	3/4" NPT
ALU-7AC2-4NNW-NGF	4,100	35	117	CW	Tempered Glass	180°	3/4" NPT
ALU-5AC2-4NNW-NGF	3,800	35	109	CW	Polycarbonate Diffused	180°	3/4" NPT
ALU-7BC2-4NNW-NGF	4,200	35	120	CW	Tempered Glass	360°	3/4" NPT
ALU-5BC2-4NNW-NGF	3,900	35	111	CW	Polycarbonate Diffused	360°	3/4" NPT
ALU-7AC2-3NNW-NGF	3,000	29	103	CW	Tempered Glass	180°	3/4" NPT
ALU-5AC2-3NNW-NGF	2,800	29	97	CW	Polycarbonate Diffused	180°	3/4" NPT
ALU-7BC2-3NNW-NGF	3,100	29	107	CW	Tempered Glass	360°	3/4" NPT
ALU-5BC2-3NNW-NGF	2,800	29	97	CW	Polycarbonate Diffused	360°	3/4" NPT
Gen II Battery Backup - UL 1598/A with Retro-fit Adapters - Crouse Hinds							
ALU-7BC2-7NCN-NGF	7,300	57	128	CW	Tempered Glass	360°	Retro-fit: Crouse Hinds
ALU-5BC2-7NCN-NGF	6,700	57	118	CW	Polycarbonate Diffused	360°	Retro-fit: Crouse Hinds
ALU-7BC2-6NCN-NGF	5,700	45	127	CW	Tempered Glass	360°	Retro-fit: Crouse Hinds
ALU-5BC2-6NCN-NGF	5,300	45	118	CW	Polycarbonate Diffused	360°	Retro-fit: Crouse Hinds
Gen II Battery Backup - UL 1598/A with Retro-fit Adapters - GE Filtr-Gard							
ALU-7BC2-7NGN-NGF	7,300	57	128	CW	Tempered Glass	360°	Retro-fit: GE Filtr-Gard
ALU-5BC2-7NGN-NGF	6,700	57	118	CW	Polycarbonate Diffused	360°	Retro-fit: GE Filtr-Gard
ALU-7BC2-6NGN-NGF	5,700	45	127	CW	Tempered Glass	360°	Retro-fit: GE Filtr-Gard
ALU-5BC2-6NGN-NGF	5,300	45	118	CW	Polycarbonate Diffused	360°	Retro-fit: GE Filtr-Gard

See ordering chart for additional options.

DISCLAIMER. All product information provided is, to the best of Dialight's knowledge, accurate as of the date of publication. When ordering, refer to www.dialight.com for current versions of: (a) relevant product documentation (including the relevant product data sheets); (b) Dialight terms and conditions of sale; and, (c) the relevant product warranty. To the extent that any contract is deemed formed between Dialight and the purchaser of Dialight products and/or an end-user, versions of documents available at www.dialight.com as at the date of sale shall be the versions incorporated therein. In the event of any discrepancy between this document or information provided at www.dialight.com, the latter shall prevail.

Ordering Information

Vigilant® LED Area Light - 120-277 VAC Battery Backup



Gen II Battery Backup - UL 1598/A - Universal Mounting Adapter

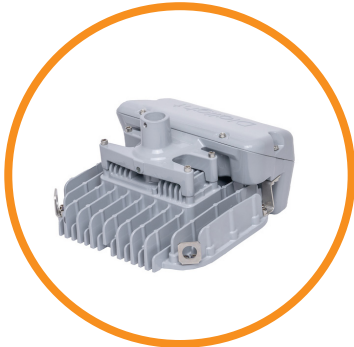
Part Number	Initial Fixture Lumens	Wattage	lm/W	CCT	Lens	Beam Distribution	Mounting
ALU-7AC2-7NUN-NGF	7,100	57	125	CW	Tempered Glass	180°	UMA Hub
ALU-5AC2-7NUN-NGF	6,600	57	116	CW	Polycarbonate Diffused	180°	UMA Hub
ALU-7BC2-7NUN-NGF	7,300	57	128	CW	Tempered Glass	360°	UMA Hub
ALU-5BC2-7NUN-NGF	6,700	57	118	CW	Polycarbonate Diffused	360°	UMA Hub
ALU-7AC2-6NUN-NGF	5,500	45	122	CW	Tempered Glass	180°	UMA Hub
ALU-5AC2-6NUN-NGF	5,100	45	113	CW	Polycarbonate Diffused	180°	UMA Hub
ALU-7BC2-6NUN-NGF	5,700	45	127	CW	Tempered Glass	360°	UMA Hub
ALU-5BC2-6NUN-NGF	5,300	45	118	CW	Polycarbonate Diffused	360°	UMA Hub
ALU-7AC2-7NSN-NGF	7,100	57	125	CW	Tempered Glass	180°	45° Stanchion
ALU-5AC2-7NSN-NGF	6,600	57	116	CW	Polycarbonate Diffused	180°	45° Stanchion
ALU-7AC2-6NSN-NGF	5,500	45	122	CW	Tempered Glass	180°	45° Stanchion
ALU-5AC2-6NSN-NGF	5,100	45	113	CW	Polycarbonate Diffused	180°	45° Stanchion
ALU-7AC2-4NSN-NGF	4,100	35	117	CW	Tempered Glass	180°	45° Stanchion
ALU-5AC2-4NSN-NGF	3,800	35	109	CW	Polycarbonate Diffused	180°	45° Stanchion
ALU-7AC2-7NWN-NGF	7,100	57	125	CW	Tempered Glass	180°	45° Wall
ALU-5AC2-7NWN-NGF	6,600	57	116	CW	Polycarbonate Diffused	180°	45° Wall
ALU-7AC2-6NWN-NGF	5,500	45	122	CW	Tempered Glass	180°	45° Wall
ALU-5AC2-6NWN-NGF	5,100	45	113	CW	Polycarbonate Diffused	180°	45° Wall
ALU-7AC2-4NWN-NGF	4,100	35	117	CW	Tempered Glass	180°	45° Wall
ALU-5AC2-4NWN-NGF	3,800	35	109	CW	Polycarbonate Diffused	180°	45° Wall
ALU-7AC2-7NVN-NGF	7,100	57	125	CW	Tempered Glass	180°	0° Wall
ALU-5AC2-7NVN-NGF	6,600	57	116	CW	Polycarbonate Diffused	180°	0° Wall
ALU-7AC2-6NVN-NGF	5,500	45	122	CW	Tempered Glass	180°	0° Wall
ALU-5AC2-6NVN-NGF	5,100	45	113	CW	Polycarbonate Diffused	180°	0° Wall
ALU-7AC2-4NVN-NGF	4,100	35	117	CW	Tempered Glass	180°	0° Wall
ALU-5AC2-4NVN-NGF	3,800	35	109	CW	Polycarbonate Diffused	180°	0° Wall
ALU-7BC2-7NFN-NGF	7,300	57	128	CW	Tempered Glass	360°	Ceiling Mount
ALU-5BC2-7NFN-NGF	6,700	57	118	CW	Polycarbonate Diffused	360°	Ceiling Mount
ALU-7BC2-6NFN-NGF	5,700	45	127	CW	Tempered Glass	360°	Ceiling Mount
ALU-5BC2-6NFN-NGF	5,300	45	118	CW	Polycarbonate Diffused	360°	Ceiling Mount
ALU-7BC2-4NFN-NGF	4,200	35	120	CW	Tempered Glass	360°	Ceiling Mount
ALU-5BC2-4NFN-NGF	3,900	35	111	CW	Polycarbonate Diffused	360°	Ceiling Mount

See ordering chart for additional options.

DISCLAIMER. All product information provided is, to the best of Dialight's knowledge, accurate as of the date of publication. When ordering, refer to www.dialight.com for current versions of: (a) relevant product documentation (including the relevant product data sheets); (b) Dialight terms and conditions of sale; and, (c) the relevant product warranty. To the extent that any contract is deemed formed between Dialight and the purchaser of Dialight products and/or an end-user, versions of documents available at www.dialight.com as at the date of sale shall be the versions incorporated therein. In the event of any discrepancy between this document or information provided at www.dialight.com, the latter shall prevail.

SafeSite® LED Area Light

120-277 VAC Model



Certifications & Ratings*

- 10 year warranty
- L70 > 150,000 hours @ 55°C
- UL 844, UL 1598/A
- UL 924
- CSA C22.2 No. 141
- CSA C22.2 No. 250
- CSA C22.2 No. 137
- IP66 / 67
- NEMA 4X

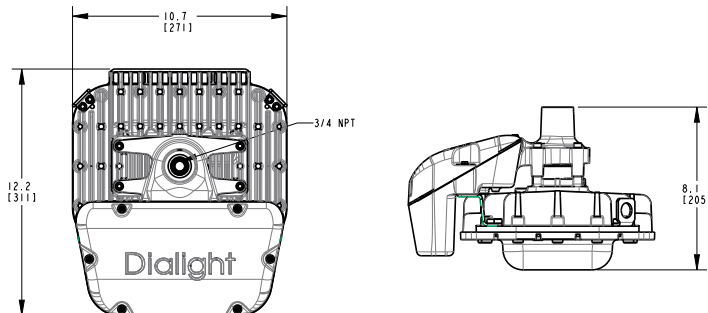
ALD/ALF:

- Class I, Div. 2, Groups A, B, C, D
- Class I, Zone 2, Group IIC
- Class II, Div. 1, Groups E, F, G**
- Zone 20 and 21**
- Class II, Div. 2 Groups F, G
- Zone 22
- Class III, Div. 1 & 2

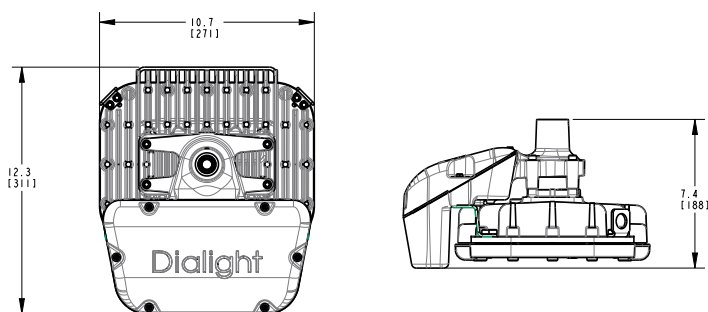
*ETL listed

**ALF Model only

Polycarbonate Lens



Glass Lens



Dimensions in inches [mm]

Mechanical Information:

Fixture weight:	20 lb (9.1 kg) - Polycarbonate lens 22 lb (10 kg) - Tempered glass lens
Shipping weight:	Add 7 lb (3.2 kg) to weights above
Impact rating:	IK10 - Polycarbonate lens IK07 - Tempered glass lens
Cabling:	10' STOOW/SOOW 18/4 AWG cable

Electrical Specifications:

Operating voltage:	120-277 VAC 50/60Hz
Total system power consumption:	See table
Operating temperature:	-4°F to +131°F (-20°C to +55°C)
EMC:	FCC Title 47, Subpart B, Section 15, Class A device RF Immunity 20V/m 80MHz-1GHz.
Transient protection:	6kV/3kA L-L and L-GND
THD:	< 20%
Power factor:	> 0.9

Construction:

Housing:	Copper-free aluminum
Finish:	Superior dual coat finish - Sealed polyester topcoat - Epoxy primer
Lens:	Hard-coated polycarbonate Tempered glass

Photometric Information:

CRI:	80
CCT:	5000K (cool white) 4000K (neutral white) 2700K (warm white)
Optics:	360° 180° forward throw for 45° mounting Wide for 0° mounting

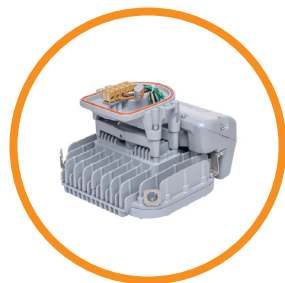
All values typical unless otherwise stated (tolerance +/- 10%)

WARNING - INSTALLATION & SECONDARY RETENTION. Use of any Dialight products without proper installation (including secondary retention / netting) and periodic inspections could cause severe injury or death. Dialight recommends that all installations should use secondary retention / netting (appropriate to the installation environment) where applicable. It is the exclusive responsibility of the contractor, installer and/or end-user to: (a) determine the suitability of the product for its intended application; and, (b) ensure that the product is safely installed (with secondary retention / netting where appropriate) and in compliance with all applicable laws and regulations. To the extent permissible under applicable laws, Dialight disclaims all liability for personal injury and/or other damage resulting from any dislodgment or other dislocation of its products.

SafeSite® LED Area Light

120-277 VAC with Universal Mounting Adapter

Universal Mounting Adapter



For use with HZXW01, HZXW45, HZXS45 or HZXFM brackets sold separately



HZXW01



HZXS45



HZXS90 / HZXT90



HZXC34



HZXW45



HZXFM

Certifications & Ratings*

- 10 year warranty
- L70 > 150,000 hours @ 55°C
- UL 844, UL 1598/A
- UL 924
- CSA C22.2 No. 141
- CSA C22.2 No. 250
- CSA C22.2 No. 137
- IP66 / 67
- NEMA 4X

ALD/ALF:

- Class I, Div. 2, Groups A, B, C, D
- Class I, Zone 2, Group IIC
- Class II, Div. 1, Groups E, F, G**
- Zone 20 and 21**
- Class II, Div. 2 Groups F, G
- Zone 22
- Class III, Div. 1 & 2

*ETL listed

**ALF Model only

Mechanical Information:

Fixture weight:

UMA models:	22 lb (10 kg) - Polycarbonate lens
	24 lb (10.9 kg) - Tempered glass lens
Wall mount models:	25 lb (11.4 kg) - Polycarbonate lens
	27 lb (12.3 kg) - Tempered glass lens
45° wall mount models:	24 lb (10.9 kg) - Polycarbonate lens
	26 lb (11.8 kg) - Tempered glass lens
45° stanchion mount:	27 lb (12.2 kg) - Polycarbonate lens
	30 lb (13.6 kg) - Tempered glass lens
Ceiling mount:	24 lb (10.9 kg) - Polycarbonate lens
	26 lb (11.8 kg) - Tempered glass lens
90° stanchion mount:	26 lb (11.7 kg) - Polycarbonate lens
	28 lb (12.6 kg) - Tempered glass lens

Shipping weight:

Add 7 lb (3.2 kg) to weights above

Cabling:

14" leads 1.02 mm 18 AWG

Impact rating:

IK10 - Polycarbonate lens
IK07 - Tempered glass lens

Electrical Specifications:

Operating voltage:	120-277 VAC 50/60Hz
Operating temperature:	-4°F to +131°F (-20°C to +55°C)
EMC:	FCC Title 47, Subpart B, Section 15, Class A device RF Immunity 20V/m 80MHz-1GHz.
Transient protection:	6kV/3kA L-L and L-GND
THD:	< 20%
Power factor:	> 0.9

Construction:

Housing:	Copper-free aluminum
Finish:	Superior dual coat finish - Sealed polyester topcoat - Epoxy primer
Lens:	Hard-coated polycarbonate Tempered glass

Photometric Information:

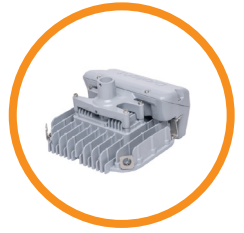
CRI:	80
CCT:	5000K (cool white) 4000K (neutral white) 2700K (warm white)
Optics:	360° 180° forward throw for 45° mounting Wide for 0° mounting

All values typical unless otherwise stated (tolerance +/- 10%)

WARNING - INSTALLATION & SECONDARY RETENTION. Use of any Dialight products without proper installation (including secondary retention / netting) and periodic inspections could cause severe injury or death. Dialight recommends that all installations should use secondary retention / netting (appropriate to the installation environment) where applicable. It is the exclusive responsibility of the contractor, installer and/or end-user to: (a) determine the suitability of the product for its intended application; and, (b) ensure that the product is safely installed (with secondary retention / netting where appropriate) and in compliance with all applicable laws and regulations. To the extent permissible under applicable laws, Dialight disclaims all liability for personal injury and/or other damage resulting from any dislodgment or other dislocation of its products.

SafeSite® LED Area Light

120-277 VAC Model



Project Information			Specifications		
Part Number:					
Project:					
Fixture Type:		Date:			

Ordering Information

AL	-		-		-		-	2	-		-	N	-		-		-	N	-	G	-	F		
Product Code		Cert.		Lens Material		Beam Dist.		CCT & CRI		Oper. Voltage		Lumen Type		Controls		Mounting Options		HW Access.		Elect. Access.		Coatings		Battery

Product Code

AL Area Light

Certification

D UL 844 Class I, Div. 2
Class II, Div. 2, Class III, Div. 1, 2
Class I, Zone 2, Group IIC,
CSA C22.2 No. 137-M81

F UL 844 Class II Div. 1, 2
Class I Div. 2, Class III, Div. 1, 2
CSA C22.2 No. 137-M81

Lens Material

5 Polycarbonate - Diffused

7 Tempered Glass - Clear

Beam Distribution

A 180°

B 360°

W Wide

CCT & CRI

C Cool White 5000K - 80 CRI

N Neutral White 4000K - 80 CRI

W Warm White 2700K - 80 CRI

Operating Voltage

2 120-277 VAC

Lumen Type

3 3,100 Lumens

4 4,200 Lumens

6 5,700 Lumens

7 7,300 Lumens

9 9,000 Lumens

Controls

N No Option

Mounting Options

 Retro-fit Adapter

 Universal Mounting Adapter (UMA)

B Swivel Bracket, Locking 0° - 90°
316 Stainless Steel

N 3/4" NPT Pendant

A Appleton Mercmaster III

C Crouse-Hinds - Champ

E GE Mini-Gard

G GE Filtr-Gard

H Thomas & Betts Hazlux

K Killark Certilite & Certilite V

M Appleton Mercmaster II

P Holophane Petrolux II and III

F Ceiling Mount

S 45° Stanchion Mount

T 90° Stanchion Mount (NPT)

U UMA - Mounting Hub

V 0° Wall Mount

W 45° Wall Mount

D 25° Stanchion Mount

Hardware Accessories

N For Mounting Options -
A, C, F, G, H, K, M, S, U, V, W, Y
(individual wire leads are terminated
in adapter housing)

W 10 ft (3 meter) Power Cable for
Mounting Options - B, N

Electrical Accessories

N No Option

Coatings

G Gray (RAL 7040)

Battery

F 90 min.

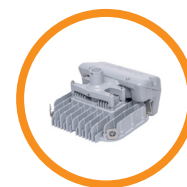
Notes

- When ordering Beam Distribution **W** - Wide: Lumen Type = **7**.
- When ordering Mounting Options "UMA" or "Retro-fit": Hardware Accessories = **N**.
- When ordering Mounting Option **U** - UMA Mounting Hub HZXW01, HZXW45, HZXS45, HZXT90, HZXF01, HZXF02, HZXF03, HZXF04, HZXF05, HZXF06, HZXF07, HZXF08, HZXF09, HZXF10, HZXF11, HZXF12, HZXF13, HZXF14, HZXF15, HZXF16, HZXF17, HZXF18, HZXF19, HZXF20, HZXF21, HZXF22, HZXF23, HZXF24, HZXF25, HZXF26, HZXF27, HZXF28, HZXF29, HZXF30, HZXF31, HZXF32, HZXF33, HZXF34, HZXF35, HZXF36, HZXF37, HZXF38, HZXF39, HZXF40, HZXF41, HZXF42, HZXF43, HZXF44, HZXF45, HZXF46, HZXF47, HZXF48, HZXF49, HZXF50, HZXF51, HZXF52, HZXF53, HZXF54, HZXF55, HZXF56, HZXF57, HZXF58, HZXF59, HZXF60, HZXF61, HZXF62, HZXF63, HZXF64, HZXF65, HZXF66, HZXF67, HZXF68, HZXF69, HZXF70, HZXF71, HZXF72, HZXF73, HZXF74, HZXF75, HZXF76, HZXF77, HZXF78, HZXF79, HZXF80, HZXF81, HZXF82, HZXF83, HZXF84, HZXF85, HZXF86, HZXF87, HZXF88, HZXF89, HZXF90, HZXF91, HZXF92, HZXF93, HZXF94, HZXF95, HZXF96, HZXF97, HZXF98, HZXF99, HZXF100 are required. See page 20-21 for details.

WARNING - INSTALLATION & SECONDARY RETENTION. Use of any Dialight products without proper installation (including secondary retention / netting) and periodic inspections could cause severe injury or death. Dialight recommends that all installations should use secondary retention / netting (appropriate to the installation environment) where applicable. It is the exclusive responsibility of the contractor, installer and/or end-user to: (a) determine the suitability of the product for its intended application; and, (b) ensure that the product is safely installed (with secondary retention / netting where appropriate) and in compliance with all applicable laws and regulations. To the extent permissible under applicable laws, Dialight disclaims all liability for personal injury and/or other damage resulting from any dislodgment or other dislocation of its products.

Ordering Information

SafeSite® LED Area Light - 120-277 VAC Model



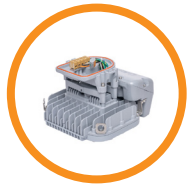
Gen II Battery Backup - CID2 - 3/4" NPT Models							
Part Number	Initial Fixture Lumens	Wattage	lm/W	CCT	Lens	Beam Distribution	Mounting
ALD-7AC2-9NNW-NGF	8,800	71	124	CW	Tempered Glass	180°	3/4" NPT
ALD-5AC2-9NNW-NGF	8,100	71	114	CW	Polycarbonate Diffused	180°	3/4" NPT
ALD-7BC2-9NNW-NGF	9,000	71	127	CW	Tempered Glass	360°	3/4" NPT
ALD-5BC2-9NNW-NGF	8,300	71	117	CW	Polycarbonate Diffused	360°	3/4" NPT
ALD-7AC2-7NNW-NGF	7,100	57	125	CW	Tempered Glass	180°	3/4" NPT
ALD-5AC2-7NNW-NGF	6,600	57	116	CW	Polycarbonate Diffused	180°	3/4" NPT
ALD-7BC2-7NNW-NGF	7,300	57	128	CW	Tempered Glass	360°	3/4" NPT
ALD-5BC2-7NNW-NGF	6,700	57	118	CW	Polycarbonate Diffused	360°	3/4" NPT
ALD-7WC2-7NNW-NGF	7,300	69	106	CW	Tempered Glass	Wide	3/4" NPT
ALD-5WC2-7NNW-NGF	6,700	69	97	CW	Polycarbonate Diffused	Wide	3/4" NPT
ALD-7AC2-6NNW-NGF	5,500	45	122	CW	Tempered Glass	180°	3/4" NPT
ALD-5AC2-6NNW-NGF	5,100	45	113	CW	Polycarbonate Diffused	180°	3/4" NPT
ALD-7BC2-6NNW-NGF	5,700	45	127	CW	Tempered Glass	360°	3/4" NPT
ALD-5BC2-6NNW-NGF	5,300	45	118	CW	Polycarbonate Diffused	360°	3/4" NPT
ALD-7AC2-4NNW-NGF	4,100	35	117	CW	Tempered Glass	180°	3/4" NPT
ALD-5AC2-4NNW-NGF	3,800	35	109	CW	Polycarbonate Diffused	180°	3/4" NPT
ALD-7BC2-4NNW-NGF	4,200	35	120	CW	Tempered Glass	360°	3/4" NPT
ALD-5BC2-4NNW-NGF	3,900	35	111	CW	Polycarbonate Diffused	360°	3/4" NPT
ALD-7AC2-3NNW-NGF	3,000	29	103	CW	Tempered Glass	180°	3/4" NPT
ALD-5AC2-3NNW-NGF	2,800	29	97	CW	Polycarbonate Diffused	180°	3/4" NPT
ALD-7BC2-3NNW-NGF	3,100	29	107	CW	Tempered Glass	360°	3/4" NPT
ALD-5BC2-3NNW-NGF	2,800	29	97	CW	Polycarbonate Diffused	360°	3/4" NPT
Gen II Battery Backup - CID2 with Retro-fit Adapters - Crouse Hinds							
ALD-7BC2-7NCN-NGF	7,300	57	128	CW	Tempered Glass	360°	Retro-fit: Crouse Hinds
ALD-5BC2-7NCN-NGF	6,700	57	118	CW	Polycarbonate Diffused	360°	Retro-fit: Crouse Hinds
ALD-7BC2-6NCN-NGF	5,700	45	127	CW	Tempered Glass	360°	Retro-fit: Crouse Hinds
ALD-5BC2-6NCN-NGF	5,300	45	118	CW	Polycarbonate Diffused	360°	Retro-fit: Crouse Hinds
Gen II Battery Backup - CID2 with Retro-fit Adapters - GE Filtr-Gard							
ALD-7BC2-7NGN-NGF	7,300	57	128	CW	Tempered Glass	360°	Retro-fit: GE Filtr-Gard
ALD-5BC2-7NGN-NGF	6,700	57	118	CW	Polycarbonate Diffused	360°	Retro-fit: GE Filtr-Gard
ALD-7BC2-6NGN-NGF	5,700	45	127	CW	Tempered Glass	360°	Retro-fit: GE Filtr-Gard
ALD-5BC2-6NGN-NGF	5,300	45	118	CW	Polycarbonate Diffused	360°	Retro-fit: GE Filtr-Gard

See ordering chart for additional options.

DISCLAIMER. All product information provided is, to the best of Dialight's knowledge, accurate as of the date of publication. When ordering, refer to www.dialight.com for current versions of: (a) relevant product documentation (including the relevant product data sheets); (b) Dialight terms and conditions of sale; and, (c) the relevant product warranty. To the extent that any contract is deemed formed between Dialight and the purchaser of Dialight products and/or an end-user, versions of documents available at www.dialight.com as at the date of sale shall be the versions incorporated therein. In the event of any discrepancy between this document or information provided at www.dialight.com, the latter shall prevail.

Ordering Information

SafeSite® LED Area Light - 120-277 VAC with UMA



Gen II Battery Backup - CID2 - Universal Mounting Adapter							
Part Number	Initial Fixture Lumens	Wattage	lm/W	CCT	Lens	Beam Distribution	Mounting
ALD-7AC2-7NUN-NGF	7,100	57	125	CW	Tempered Glass	180°	UMA Hub
ALD-5AC2-7NUN-NGF	6,600	57	116	CW	Polycarbonate Diffused	180°	UMA Hub
ALD-7BC2-7NUN-NGF	7,300	57	128	CW	Tempered Glass	360°	UMA Hub
ALD-5BC2-7NUN-NGF	6,700	57	118	CW	Polycarbonate Diffused	360°	UMA Hub
ALD-7AC2-6NUN-NGF	5,500	45	122	CW	Tempered Glass	180°	UMA Hub
ALD-5AC2-6NUN-NGF	5,100	45	113	CW	Polycarbonate Diffused	180°	UMA Hub
ALD-7BC2-6NUN-NGF	5,700	45	127	CW	Tempered Glass	360°	UMA Hub
ALD-5BC2-6NUN-NGF	5,300	45	118	CW	Polycarbonate Diffused	360°	UMA Hub
ALD-7AC2-7NSN-NGF	7,100	57	125	CW	Tempered Glass	180°	45° Stanchion
ALD-5AC2-7NSN-NGF	6,600	57	116	CW	Polycarbonate Diffused	180°	45° Stanchion
ALD-7AC2-6NSN-NGF	5,500	45	122	CW	Tempered Glass	180°	45° Stanchion
ALD-5AC2-6NSN-NGF	5,100	45	113	CW	Polycarbonate Diffused	180°	45° Stanchion
ALD-7AC2-4NSN-NGF	4,100	35	117	CW	Tempered Glass	180°	45° Stanchion
ALD-5AC2-4NSN-NGF	3,800	35	109	CW	Polycarbonate Diffused	180°	45° Stanchion
ALD-7AC2-7NWN-NGF	7,100	57	125	CW	Tempered Glass	180°	45° Wall
ALD-5AC2-7NWN-NGF	6,600	57	116	CW	Polycarbonate Diffused	180°	45° Wall
ALD-7AC2-6NWN-NGF	5,500	45	122	CW	Tempered Glass	180°	45° Wall
ALD-5AC2-6NWN-NGF	5,100	45	113	CW	Polycarbonate Diffused	180°	45° Wall
ALD-7AC2-4NWN-NGF	4,100	35	117	CW	Tempered Glass	180°	45° Wall
ALD-5AC2-4NWN-NGF	3,800	35	109	CW	Polycarbonate Diffused	180°	45° Wall
ALD-7AC2-7NVN-NGF	7,100	57	125	CW	Tempered Glass	180°	0° Wall
ALD-5AC2-7NVN-NGF	6,600	57	116	CW	Polycarbonate Diffused	180°	0° Wall
ALD-7AC2-6NVN-NGF	5,500	45	122	CW	Tempered Glass	180°	0° Wall
ALD-5AC2-6NVN-NGF	5,100	45	113	CW	Polycarbonate Diffused	180°	0° Wall
ALD-7AC2-4NVN-NGF	4,100	35	117	CW	Tempered Glass	180°	0° Wall
ALD-5AC2-4NVN-NGF	3,800	35	109	CW	Polycarbonate Diffused	180°	0° Wall
ALD-7BC2-7NFN-NGF	7,300	57	128	CW	Tempered Glass	360°	Ceiling Mount
ALD-5BC2-7NFN-NGF	6,700	57	118	CW	Polycarbonate Diffused	360°	Ceiling Mount
ALD-7BC2-6NFN-NGF	5,700	45	127	CW	Tempered Glass	360°	Ceiling Mount
ALD-5BC2-6NFN-NGF	5,300	45	118	CW	Polycarbonate Diffused	360°	Ceiling Mount
ALD-7BC2-4NFN-NGF	4,200	35	120	CW	Tempered Glass	360°	Ceiling Mount
ALD-5BC2-4NFN-NGF	3,900	35	111	CW	Polycarbonate Diffused	360°	Ceiling Mount

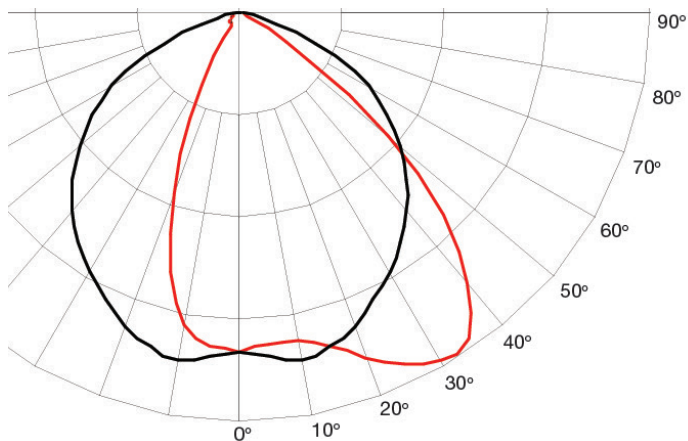
See ordering chart for additional options.

DISCLAIMER. All product information provided is, to the best of Dialight's knowledge, accurate as of the date of publication. When ordering, refer to www.dialight.com for current versions of: (a) relevant product documentation (including the relevant product data sheets); (b) Dialight terms and conditions of sale; and, (c) the relevant product warranty. To the extent that any contract is deemed formed between Dialight and the purchaser of Dialight products and/or an end-user, versions of documents available at www.dialight.com as at the date of sale shall be the versions incorporated therein. In the event of any discrepancy between this document or information provided at www.dialight.com, the latter shall prevail.

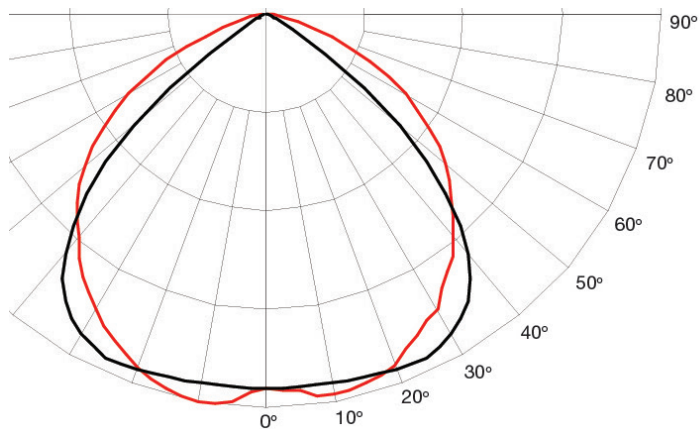
Beam Distribution

■ = 0°
■ = 90°

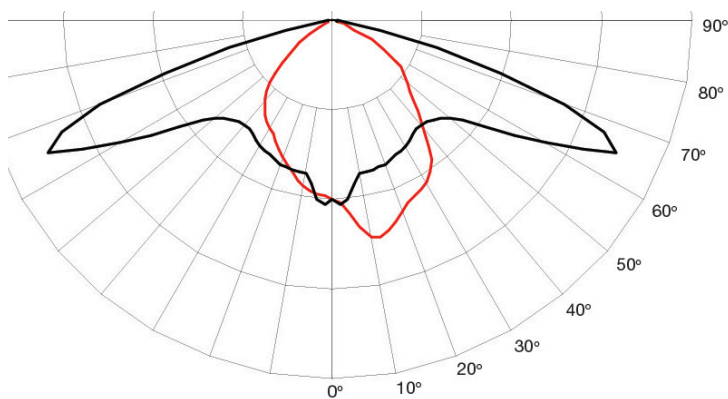
180° Beam Angle



360° Beam Angle



Wide Beam Angle



Inrush Current / Circuit Breakers

VAC	120V	277V
I _{pk} (A)	7.7	17.8
T50 (ms)	0.4	0.4

DISCLAIMER. All product information provided is, to the best of Dialight's knowledge, accurate as of the date of publication. When ordering, refer to www.dialight.com for current versions of: (a) relevant product documentation (including the relevant product data sheets); (b) Dialight terms and conditions of sale; and, (c) the relevant product warranty. To the extent that any contract is deemed formed between Dialight and the purchaser of Dialight products and/or an end-user, versions of documents available at www.dialight.com as at the date of sale shall be the versions incorporated therein. In the event of any discrepancy between this document or information provided at www.dialight.com, the latter shall prevail.

Lumen Tables

Type	Lumen Family	Typical Lumens in BB Mode (Ambient 25°C)
Tempered Glass 360° Optic CW 80 CRI	9K	1,600
	7K	1,550
	6K	1,560
	4K	1,600
	3K	1,520

Lumens will decrease at temperatures below 0°

Variable	Type	Multiplication Factor
Lens	Tempered Glass	100%
	PC Diffused	92%
Optic	360°	100%
	180°	98%
	Wide	81%
CCT & CRI	CW 80 CRI	100%
	NW 80 CRI	100%

Mounting Accessories



Certified to: UL 50E • CSA C22.2 No. 94.2-07

HZXSTAN100S

- 1.00" (1.315" Pole OD) Slip-fit stanchion mount

HZXSTAN125S

- 1.25" (1.660" Pole OD) Slip-fit stanchion mount

HZXSTAN150S

- 1.50" (1.900" Pole OD) Slip-fit stanchion mount

HZXSTAN200S

- 2.00" (2.375" Pole OD) Slip-fit stanchion mount

HZXSTAN100T

- 1.00" (1.315" Pole OD) NPT threaded stanchion mount

HZXSTAN125T

- 1.25" (1.660" Pole OD) NPT threaded stanchion mount

HZXSTAN150T

- 1.50" (1.900" Pole OD) NPT threaded stanchion mount

HZXSTAN200T

- 2.00" (2.375" Pole OD) NPT threaded stanchion mount



HZXW3

- 316 stainless steel bracket



HZXW4

- 316 stainless steel bracket with pipe clamp



Certified to: UL 50E • CSA C22.2 No. 94.2-07

HZXJB075

- 0.75" Ceiling / Wall / Pole mount junction box

HZXJB100

- 1.00" Ceiling / Wall / Pole mount junction box

HZXJB125

- 1.25" Ceiling / Wall / Pole mount junction box

HZXJB150

- 1.50" Ceiling / Wall / Pole mount junction box



Certified to: UL 50E • UL 1203

ISA 12.12.01 • CSA C22.2 No. 94.2-07

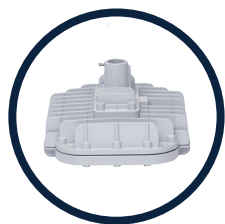
HBXC1

- 0.75" NPT Ceiling mount

DISCLAIMER. All product information provided is, to the best of Dialight's knowledge, accurate as of the date of publication. When ordering, refer to www.dialight.com for current versions of: (a) relevant product documentation (including the relevant product data sheets); (b) Dialight terms and conditions of sale; and, (c) the relevant product warranty. To the extent that any contract is deemed formed between Dialight and the purchaser of Dialight products and/or an end-user, versions of documents available at www.dialight.com as at the date of sale shall be the versions incorporated therein. In the event of any discrepancy between this document or information provided at www.dialight.com, the latter shall prevail.

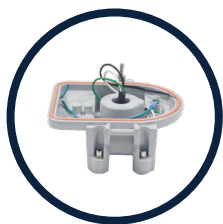
Mounting Options

Universal Mounting Adapter



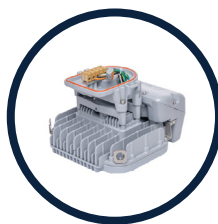
Area Light Base

+



HZXUMA

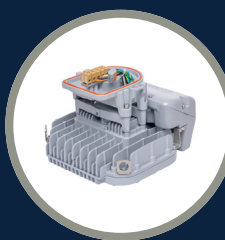
=



UMA Area Light

Our new Universal Mounting Adapter, now provides even greater flexibility by allowing you to modify stock you have on-hand to configure based on the needs of your customer without having to stock a lot of factory installed systems.

Area Lights with Universal Mounting Adapter & Brackets Sold Separately



UMA Area Light
ALx-xxxx-xxUx-xxN

+



Stanchion 45°
HZXS45



Wall 45°
HZXW45



Wall 0°
HZXW01



Ceiling
HZXFM

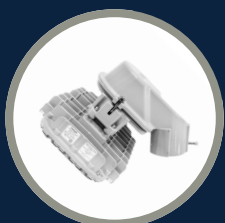


Stanchion 90°
HZXS90 / HZXT90



Stanchion 25°
HZXS25

Area Lights with Purchased Brackets Factory Installed



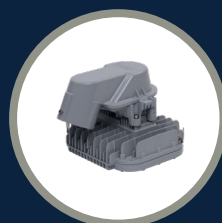
Stanchion 45°



Wall 45°



Wall 0°



Stanchion 25°



Ceiling



Stanchion 90°

DISCLAIMER. All product information provided is, to the best of Dialight's knowledge, accurate as of the date of publication. When ordering, refer to www.dialight.com for current versions of: (a) relevant product documentation (including the relevant product data sheets); (b) Dialight terms and conditions of sale; and, (c) the relevant product warranty. To the extent that any contract is deemed formed between Dialight and the purchaser of Dialight products and/or an end-user, versions of documents available at www.dialight.com as at the date of sale shall be the versions incorporated therein. In the event of any discrepancy between this document or information provided at www.dialight.com, the latter shall prevail.

Mounting Options

Retro-fit Adapters



Area Lights with Retro-fit Adapters



Killark® Certilite® & Certilite® V
HZXTHKL



Appleton® Mercmaster III
HZXTHAP



Crouse-Hinds Champ®
HZXTHCH



Holophane® Petrolux II, III
HZXTHP3



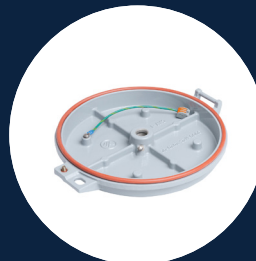
Appleton® Mercmaster II
HZXTHM2



Thomas & Betts Hazlux®
HZXHTB



GE Filtr-Gard™
HZXTHGE



GE Mini-Gard™
HZXTHMG

Retro-fit Options

Retro-fit adapters can be factory installed. See product ordering information for details.

Eaton's Crouse-Hinds – Champ®
 GE Lighting Solutions – Filtr-Gard™
 GE Lighting Solutions – Mini-Gard™
 Holophane Petrolux® II, III
 Thomas & Betts Hazlux®
 Appleton® Mercmaster III
 Appleton® Mercmaster II
 Killark® Certilite® & Certilite® V

*Petrolux adapter available as a standalone accessory only



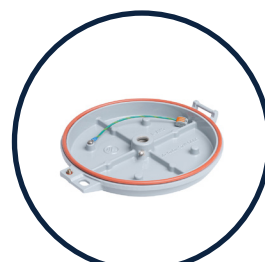
Eaton's Crouse-Hinds – Champ® - HZXTHCH				
Pendant	Ceiling	Wall	Stanchion	Quad Mount
APM2	CM2	TWM2	JM5	QM25
APM3	CM3	TWM3	PM5	
HPM2				



GE Lighting Solutions – Filtr-Gard™ - HZXTHGE				
Pendant	Ceiling	Wall	Stanchion	Quad Mount
3P	3F	3C	3W	5S
4P	4F		4W	6S
				5J, 6J



Holophane® Petrolux II, III - HZXTHP3				
Pendant	Universal	Stanchion	Ceiling	Wall
PD	UN	SA	CD	WL
GH		ST	CE	W
P		A	B, C, D	



GE Lighting Solutions – Mini-Gard™ - HZXTHMG			
Pendant	Ceiling	Stanchion	Wall
3P	3C	5S	3W
4P	4C	5J	4W
		6S	
		6J	

DISCLAIMER. All product information provided is, to the best of Dialight's knowledge, accurate as of the date of publication. When ordering, refer to www.dialight.com for current versions of: (a) relevant product documentation (including the relevant product data sheets); (b) Dialight terms and conditions of sale; and, (c) the relevant product warranty. To the extent that any contract is deemed formed between Dialight and the purchaser of Dialight products and/or an end-user, versions of documents available at www.dialight.com as at the date of sale shall be the versions incorporated therein. In the event of any discrepancy between this document or information provided at www.dialight.com, the latter shall prevail.

Retro-fit Options



Thomas & Betts Hazlux® - HZXTHTB				
Pendant	Pendant Cone	Flexible Pendant	Ceiling	Wall
VP2	VA2	VF2	VC2	VB2
VP3	VA3	VF3	VC3	VB3
Wall	25° Angle Stanchion	25° Angle Stanchion	Straight Stanchion	Straight Stanchion
VB2-VIB	VS4	VS4-VIB	VL4	VL4-VIB
VB3-VIB	VS5	VS5-VIB	VL5	VL5-VIB



Appleton® Mercmaster III - HZXTHAP			
Pendant	Ceiling	Wall	Stanchion
KPA- 75, 100	KPC-75	KPWB-75	KPS-125
KPAF-75, 100	KPC-100	KPWB-100	KPS-150
KPCH-75, 100			KPST-125
			KPST-150



Appleton® Mercmaster II - HZXTHM2			
Pendant	Ceiling	Wall	Stanchion
LPA-75	LPC-75	LPWB-75	LPS-125
LPA-100	LPC-100	LPWB-100	LPS-150

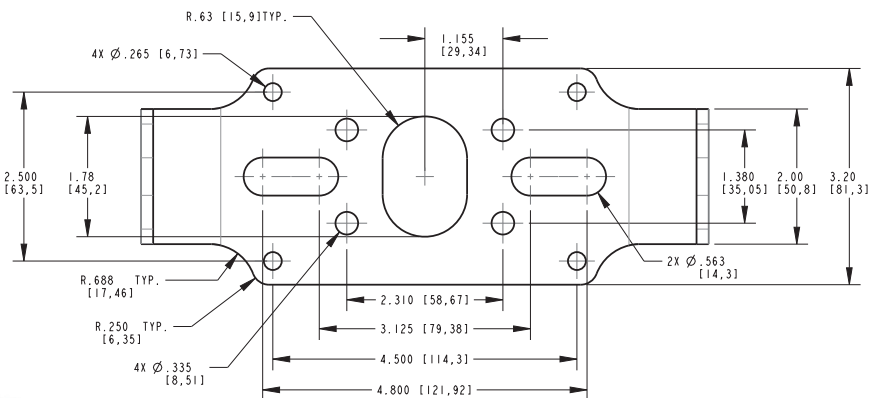
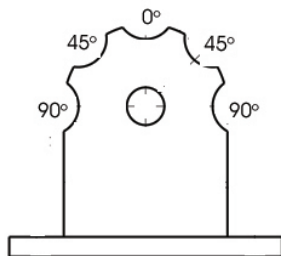


Killark® Certilite® & Certilite® V - HZXTHKL			
Pendant	Ceiling	Wall	Stanchion
VMA2B & VMA-2	VMX2B & VMX-2	VMB2B & VMB-2	VMD4B
VMA3B & VMA-3	VMX3B & VMX-3	VMB3B & VMB-3	VMD5B
VMC2B & VMC-2	VMX6B, 7B, 8B, 9B		VMS5B
VMC3B & VMC-3			
VMF2B, 3B			

DISCLAIMER. All product information provided is, to the best of Dialight's knowledge, accurate as of the date of publication. When ordering, refer to www.dialight.com for current versions of: (a) relevant product documentation (including the relevant product data sheets); (b) Dialight terms and conditions of sale; and, (c) the relevant product warranty. To the extent that any contract is deemed formed between Dialight and the purchaser of Dialight products and/or an end-user, versions of documents available at www.dialight.com as at the date of sale shall be the versions incorporated therein. In the event of any discrepancy between this document or information provided at www.dialight.com, the latter shall prevail.

HZXW3 & HZXW4

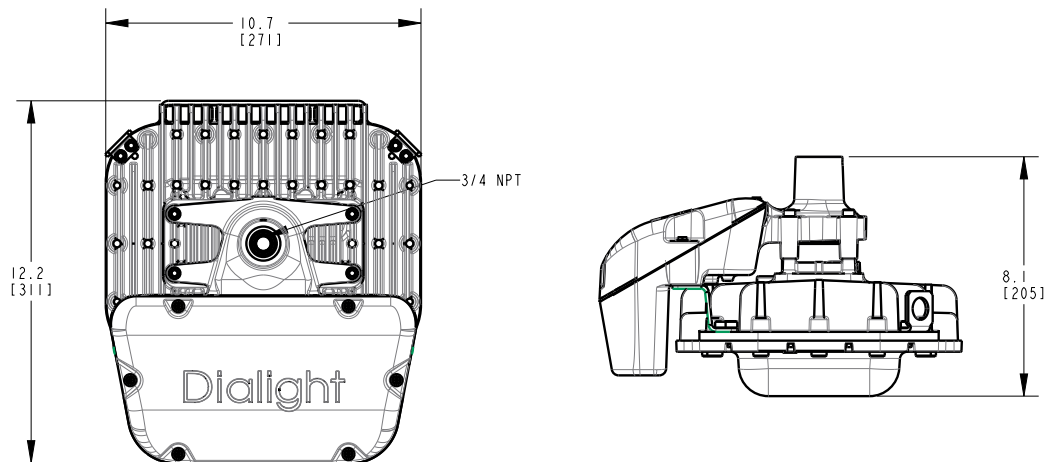
.18" thick; HZXW4 will mount to 1.5" conduit and comes with pipe mount clamps.



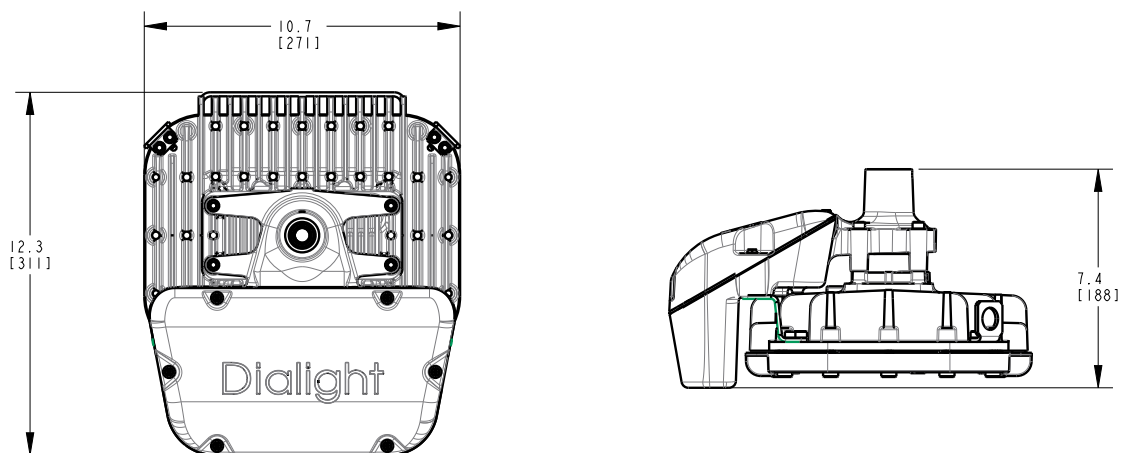
DISCLAIMER. All product information provided is, to the best of Dialight's knowledge, accurate as of the date of publication. When ordering, refer to www.dialight.com for current versions of: (a) relevant product documentation (including the relevant product data sheets); (b) Dialight terms and conditions of sale; and, (c) the relevant product warranty. To the extent that any contract is deemed formed between Dialight and the purchaser of Dialight products and/or an end-user, versions of documents available at www.dialight.com as at the date of sale shall be the versions incorporated therein. In the event of any discrepancy between this document or information provided at www.dialight.com, the latter shall prevail.

Dimensional Drawings - Area Light

Polycarbonate Lens



Glass Lens

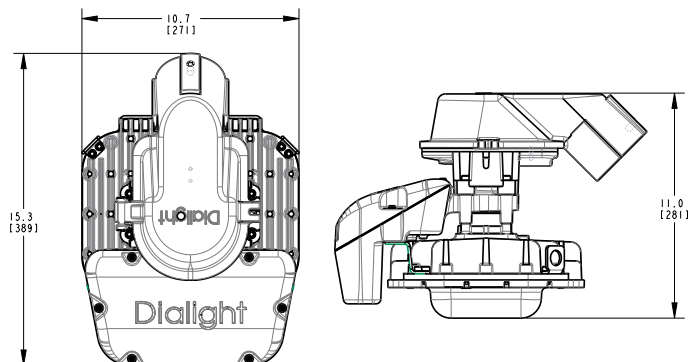


Dimensions in inches [mm]

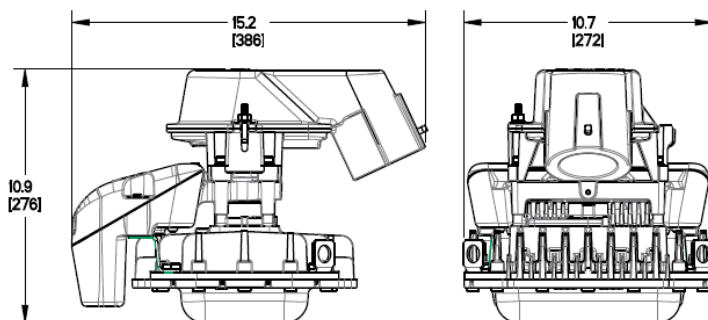
DISCLAIMER. All product information provided is, to the best of Dialight's knowledge, accurate as of the date of publication. When ordering, refer to www.dialight.com for current versions of: (a) relevant product documentation (including the relevant product data sheets); (b) Dialight terms and conditions of sale; and, (c) the relevant product warranty. To the extent that any contract is deemed formed between Dialight and the purchaser of Dialight products and/or an end-user, versions of documents available at www.dialight.com as at the date of sale shall be the versions incorporated therein. In the event of any discrepancy between this document or information provided at www.dialight.com, the latter shall prevail.

Dimensional Drawings - Universal Mounting Adapter

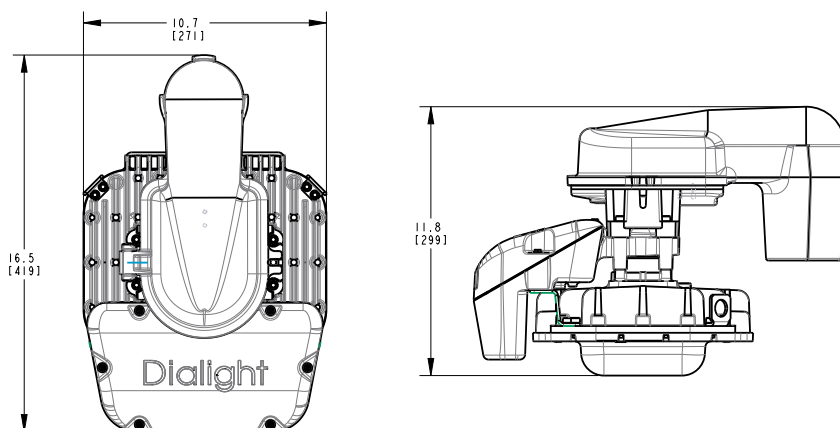
45° Stand-on Mount



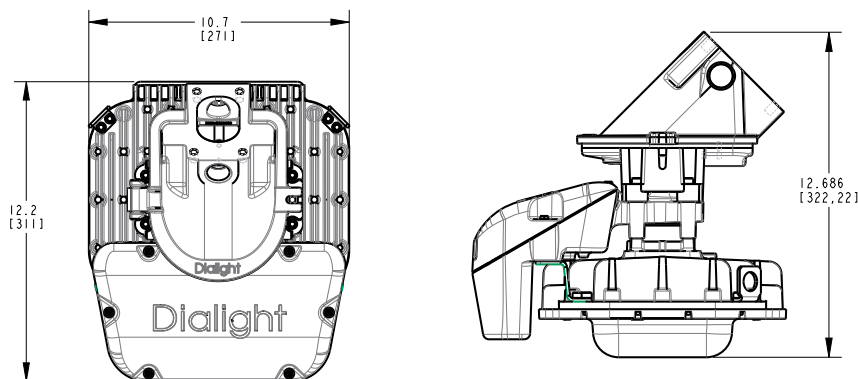
25° Stand-on Mount



90° Stand-on Mount



45° Wall Mount

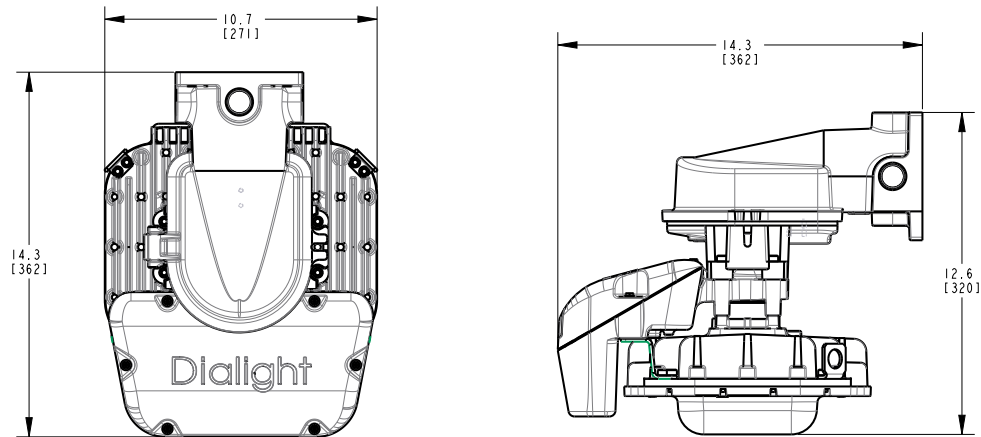


Dimensions in inches [mm]

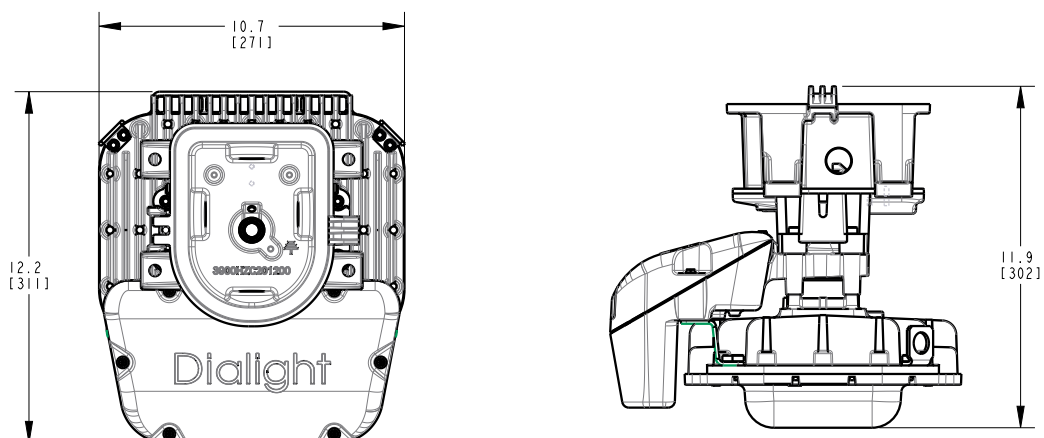
DISCLAIMER. All product information provided is, to the best of Dialight's knowledge, accurate as of the date of publication. When ordering, refer to www.dialight.com for current versions of: (a) relevant product documentation (including the relevant product data sheets); (b) Dialight terms and conditions of sale; and, (c) the relevant product warranty. To the extent that any contract is deemed formed between Dialight and the purchaser of Dialight products and/or an end-user, versions of documents available at www.dialight.com as at the date of sale shall be the versions incorporated therein. In the event of any discrepancy between this document or information provided at www.dialight.com, the latter shall prevail.

Dimensional Drawings - Universal Mounting Adapter

Wall Mount



Ceiling Mount

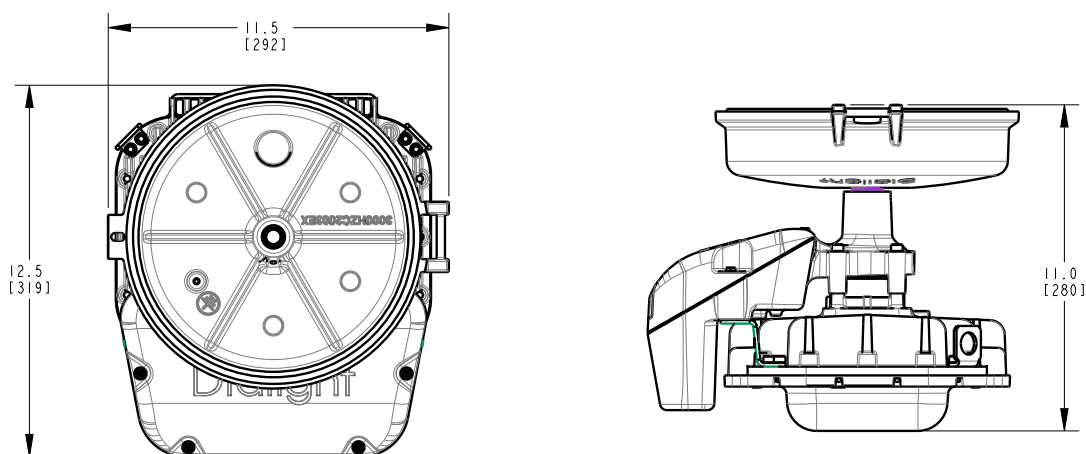


Dimensions in inches [mm]

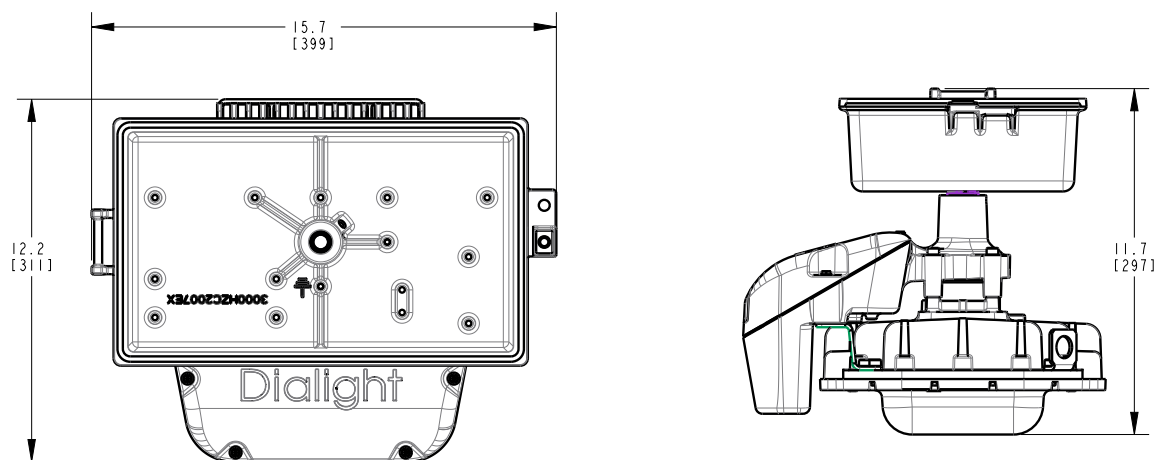
DISCLAIMER. All product information provided is, to the best of Dialight's knowledge, accurate as of the date of publication. When ordering, refer to www.dialight.com for current versions of: (a) relevant product documentation (including the relevant product data sheets); (b) Dialight terms and conditions of sale; and, (c) the relevant product warranty. To the extent that any contract is deemed formed between Dialight and the purchaser of Dialight products and/or an end-user, versions of documents available at www.dialight.com as at the date of sale shall be the versions incorporated therein. In the event of any discrepancy between this document or information provided at www.dialight.com, the latter shall prevail.

Dimensional Drawings - Retro-fit Kits

Eaton's Crouse-Hinds – Champ®



GE Lighting Solutions – Filtr-Gard™



Dimensions in inches [mm]

DISCLAIMER. All product information provided is, to the best of Dialight's knowledge, accurate as of the date of publication. When ordering, refer to www.dialight.com for current versions of: (a) relevant product documentation (including the relevant product data sheets); (b) Dialight terms and conditions of sale; and, (c) the relevant product warranty. To the extent that any contract is deemed formed between Dialight and the purchaser of Dialight products and/or an end-user, versions of documents available at www.dialight.com as at the date of sale shall be the versions incorporated therein. In the event of any discrepancy between this document or information provided at www.dialight.com, the latter shall prevail.

North American HQ

1501 Route 34 South
Farmingdale, NJ 07727

Tel: 732-919-3119

Fax: 732-751-5778

info@dialight.com

WARNING / DISCLAIMERS:

Installation & secondary retention. The use of this product without proper installation (including secondary retention / netting) and periodic inspections, could cause severe injury or death. Dialight recommends that all installations should use secondary retention / netting (appropriate to the installation environment) as applicable. Dialight products are intended for ultimate purchase, installation and operation by knowledgeable persons trained in the functional assessment, installation, use and maintenance of such products and all customers (including but not limited to end customers) are responsible for assessing the suitability of Dialight products for any given installation requirement. It is the exclusive responsibility of the contractor, installer and/or end-user to: (a) determine the suitability of the product for its intended application; and, (b) ensure that the product is safely installed (with secondary retention / netting as appropriate) and in compliance with all applicable laws and regulations.

Product specifications & warranties. All product information provided is, to the best of Dialight's knowledge, accurate as of the date of publication. All values and performance data herein are design or typical values when measured under laboratory conditions. The information herein is subject to change without notice. The products / software detailed herein are subject to applicable warranties and terms and conditions of use/purchase. Unless agreed otherwise in writing by an authorized representative of Dialight, Dialight does not represent that its products are fit for any particular purpose and accepts no liability for the installation and/or unauthorised use of its products. When ordering, refer to www.dialight.com for current versions of: (a) relevant product documentation (including relevant product data sheets); (b) Dialight terms and conditions of sale; and, (c) the relevant product warranties. To the extent that any contract is deemed formed between Dialight and the purchaser of Dialight products and/or an end-user, versions of documents available at www.dialight.com as at the date of sale shall be the versions incorporated therein. In the event of any discrepancy between this document and information provided at www.dialight.com, the latter shall prevail.

Exclusion of liability. To the extent permissible under the relevant law, Dialight disclaims all liability for personal injury and/or other damage resulting from any dislodgment or other dislocation of its products. Whilst Dialight has used its reasonable endeavours to ensure the completeness and accuracy of information herein, Dialight does not assume any liability for damages resulting from use of this information or for any third-party representations made in relation to Dialight products.