

PRODUCT PORTFOLIO

DESIGNED FOR THE WORLD'S
MOST DEMANDING APPLICATIONS

World Leading Industrial
LED Lighting Solutions

www.dialight.com

DIALIGHT DIFFERENCE

Low Maintenance Mechanical Design

Sealed and optimized to reduce or eliminate the need for maintenance over the life of the fixture. Easy to install and retrofit to existing infrastructure.

Custom Power Supplies

Long-life potted drivers with optimized thermal dissipation for protection against environmental contaminants and vibration-related failures.

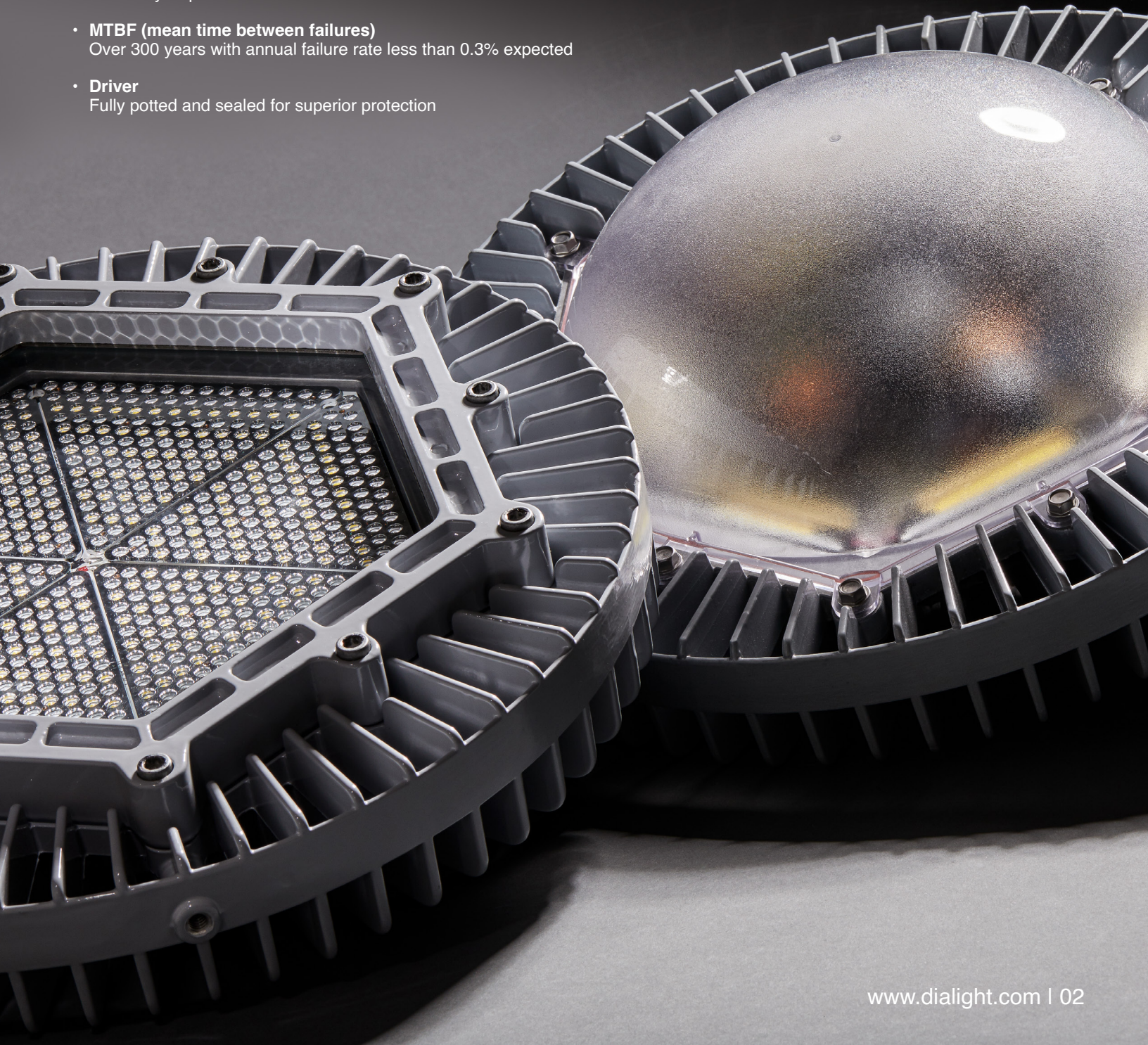
- **ALT (accelerated life testing)**
Over 15 yr equivalent at 24/7 service
- **MTBF (mean time between failures)**
Over 300 years with annual failure rate less than 0.3% expected
- **Driver**
Fully potted and sealed for superior protection

Latest LEDs and Advanced Optics

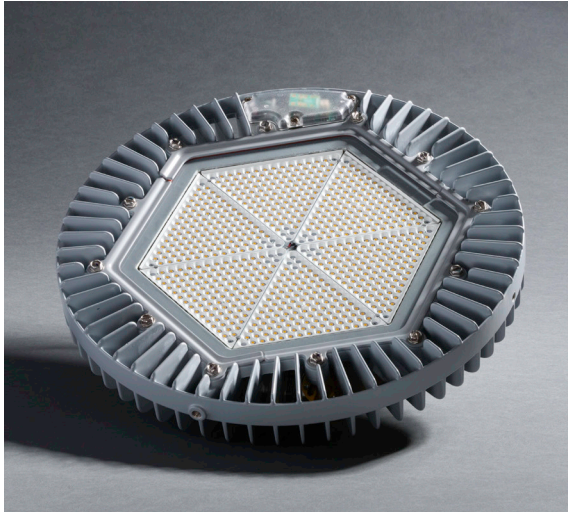
Highly efficient, crisp, low-glare illumination. Lighting where you need it, not where you don't.

Built for Demanding Environments

Hazardous location certified. Backed by a 10-year warranty. Designed for total confidence in tough conditions.



HAZARDOUS & NON-HAZARDOUS



LED HIGH BAYS

Durable, energy-efficient lighting built for mounting at high ceilings in industrial facilities.

Models: High Bay, Low Bay, High Output High Bay, Battery Backup

Technology: Vigilant®, SafeSite®

Warranty: 10-Year

Lumens: 6,000-72,000

Efficacy: Up to 200 lm/W

Ratings: IP66/67, NEMA 4X, IK05/IK06/IK10

Certifications: UL 1598/A, UL844 (CID1, CID2, CIID1, CIID2, CIII)

Operating Temp: -40°F - +149°F (-40°C - +65°C)

Voltage: 120-277VAC, 120-250VDC, 277-480VAC

CRI: 70 or 80

Rated Life: L70 >150,000 hours

Lens: Glass, Polycarbonate, Acrylic

Beam Distribution: Medium, Wide, Ultra-Wide, Narrow, Oval, Round

Mounting Options: Hook, Pendant, Bracket

DLC Listing: Standard and Premium (Select Models)



LED AREA LIGHTS

Versatile illumination with flexible mounting options for general lighting applications.

Models: Area Light, Conveyor Light, Battery Backup

Technology: DuroSite®, Vigilant®, SafeSite®

Warranty: 10-Year (5-Year DuroSite, SafeSite 347-480VAC Models)

Lumens: 3,000 - 13,000

Efficacy: Up to 169 lm/W

Ratings: IP66/67/69, NEMA 4X, IK07-10

Certifications: UL 1598/A, UL844 (CID1, CID2, CIID1, CIID2, CIII)

Operating Temp: -40°F - +149°F (-40°C - +65°C)

Voltage: 120-277VAC, 120-250VDC, 347-480VAC

CRI: 70 or 80

Rated Life: L70 >150,000 hours

Lens: Glass, Polycarbonate

Beam Distribution: 360°, 180°, Wide

Mounting Options: Pendant, Ceiling, Stanchion, Wall, Retro-fit Adapters

DLC Listing: Standard and Premium (Select Models)



LED LINEARS

Slim, low-profile fixtures designed for uniform lighting in tight or low-clearance areas.

Models: Low Profile/Top Conduit Linear, Battery Backup, NSF

Technology: DuroSite®, Vigilant®, SafeSite®

Warranty: 10-Year and 5-Year

Lumens: 3,600-9,600

Efficacy: Up to 139 lm/W

Ratings: NEMA 4X, IP66/67, IP69K (NSF)

Certifications: UL 1598/A, UL844 (CID1, CID2, CIID1, CIID2, CIII), NSF

Operating Temp: -40°F - +149°F (-40°C - +65°C)

Voltage: 120-277VAC, 120-250VDC, 347-480VAC

CRI: 75-80

Rated Life: L70 >100,000 hours

Lens: Polycarbonate, Glass

Beam Distribution: Medium, Wide

Mounting Options: Swivel Bracket, Pole Mount, Pendant, Rig

DLC Listing: Standard (Select Models)



HAZARDOUS & NON-HAZARDOUS



LED FLOODLIGHTS

Powerful flood lighting for illuminating large areas, perimeters, and outdoor work zones.

Models: Floodlight, High-Mast, Heavy-Duty, Battery Backup

Technology: ProSite

Warranty: 10-Year

Lumens: 12,000 - 65,000

Efficacy: Up to 165 lm/W

Ratings: IP66/67, NEMA 4X, IK08-10

Certifications: UL 1598/A, UL844 (CID2, CIID1, CIID2, CIII)

Operating Temp: -40°F - +149°F (-40°C - +65°C)

Voltage: 120-277VAC / 120-250VDC, 277-480VAC

CRI: 70 and 80

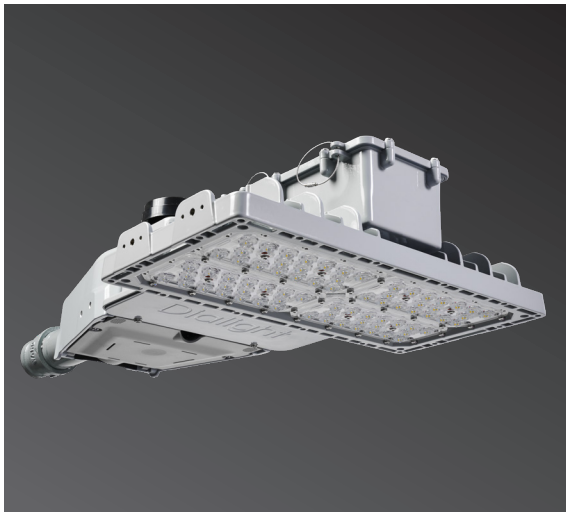
Rated Life: L70 >150,000 hours

Lens: Glass, Polycarbonate

Beam Distribution: NEMA 4, NEMA 6, NEMA 7x6, Asymmetric

Mounting Options: Swivel Bracket, Slip Fitter, Mast-Arm

DLC Listing: Standard and Premium (Select Models)



LED STREETLIGHTS

Rugged, reliable lighting engineered for roadways, perimeter security, and facility exteriors.

Models: Streetlight, Battery Backup

Technology: ProSite

Warranty: 10-Year

Lumens: 12,000 - 30,000

Efficacy: Up to 155 lm/W

Ratings: IP66/67, NEMA 4X, IK08-10

Certifications: UL 1598/A, UL844 (CID2, CIID1, CIID2, CIII)

Operating Temp: -40°F - +149°F (-40°C - +65°C)

Voltage: 120-277VAC / 120-250VDC, 277-480VAC

CRI: 70 and 80

Rated Life: L70 >150,000 hours

Lens: Glass, Polycarbonate

Beam Distribution: Type III, Type V

Mounting Options: Mast-Arm, Slip Fitter

DLC Listing: Standard and Premium (Select Models)



LED EMERGENCY/EXIT LIGHTS

Essential safety lighting that provides visibility and guidance during power loss or evacuation.

Models: Classified Family, NEMA 4X Family

Warranty: 5-Year

Ratings: NEMA 4X, IP65, IP66, NSF

Certifications: UL 924

Voltage: 120-277VAC

Mounting Options: Ceiling, Wall, Pendant



INDUSTRY LEADING 10 YEAR WARRANTY

10-Point Formula

1 Component Selection

Component ratings checked via stress analysis at the design phase. Use of long-life electrolytic capacitors.

2 Topology Selection

Use of efficient, soft-switching resonant topologies. 90-94% efficiency.

3 Reliability Predictions

MTBF and survival probability calculations consistent with 10-year warranty.

4 Accelerated Life Tests (ALT)

Practical MTBF assessment using temperature cycling and failure rate calculations. Repeated for any major change. Scheduled HALT on production samples (Quality Audit).

5 Stress Analysis

Every component checked by calculation and/or measurement. Multiple temperature studies.

6 DFM and Supply Chain Analysis

Design for Manufacturing. All PCB design specifications (spacings, hole sizes, etc.) are carefully reviewed to ease manufacturing and reduce handling and rework. Multiple component alternatives are specified and tested to prevent production stoppages.

7 Quality Controls

Telecom Practice Policy: 100% testing of THD, PF, and input power. Subassemblies are tested before being assembled to the final product.

8 Weak Signal Management (WSM) Data Analysis

Weak manufacturing failure analysis. Burn-in data analysis. Comprehensive PHM tools used to detect high failure. Periodic historical data check to ensure failure rates remain in alignment with 10-year life expectation.

9 Burn-in

This can include power cycling, over-voltage stressing, and thermal stressing of the final product.

10 PHM

Prognostic & Health Management. Gen 4 power supplies.



FIXTURE TESTING

And Corrosion Protection

Dialight is the world leader in industrial LED lighting with millions of fixtures installed worldwide in some of the most unforgiving environments on the planet. Our fixtures undergo extensive and rigorous testing that far exceeds the industry standard, including:

- Optical testing through our NVLAP certified in-house optics lab featuring the latest cutting edge equipment
- In-house Salt spray testing at 10X the industry standard
- Shock and vibration testing to Lloyd's standard or IEC 60068
- Accelerated life testing that simulates lifetime exposure to excessive heat and fluctuating power conditions in environmental chambers located in our facilities
- In-house expertise on hazardous-location certifications covering every class, division and zone in the industry

To further ensure long-term reliability, all fixtures undergo 100% burn-in testing at factory settings, either in dynamic mode or using Highly Accelerated Stress Screening (HASS).

Dialight products utilize a 6-stage pretreatment dual coat solution employing an epoxy hybrid basecoat with a TGIC polyester topcoat that achieves a scribe rating of 9 and blister rating of 10 after 2,500+ hours of salt spray testing per ASTM B117.

Dual coat solution provides superior protection. Epoxy basecoat improves edge coverage and enhances chemical corrosion resistance. TGIC polyester topcoat provides enhanced weatherability and saltwater corrosion resistance. The 6-stage pretreatment process ensures superior surface preparation and superior coating adhesion. To ensure consistency and quality, Dialight performs a daily inspection for the following: Crosshatch Adhesion Test, Methyl Ethyl Ketone Resistance Test, Boiling Water Test, Surface Finish Test, Film Thickness Test, Color Test, and Gloss Test.



North American HQ

1501 Route 34 South
Farmingdale, NJ 07727
Tel: 732-919-3119
Fax: 732-751-5778
info@dialight.com